

# Live from IPY!

with

## Michael Wing

*and the archaeology  
team in Oulu, Finland*

**28 May 2009**

7:30AM Alaska Daylight Time  
[5:30AM HST, 8:30AM PDT, 9:30AM  
MDT, 10:30AM CDT, 11:30AM EDT].





# Welcome to HorizonWimba



Arctic Research Consortium of the United States

List of all participants

Raise your hand to ask a question

Return to the lobby or exit

Slides will be shown here

If using VOIP, press here to talk

'Chat' with one person or the entire group

The screenshot shows a Wimba webinar interface. At the top, a large blue banner displays the text "Welcome to HorizonWimba" and the ARCUS logo. Below the banner is a toolbar with icons for "TALK", audio, video, and other functions. A chat window on the left shows a conversation between participants. On the right, a "People (3)" list shows the names of participants: Janet\_Warburton, ronnie, and tina. A "Main Room" dropdown menu is visible at the bottom left. Several elements are circled in red: the "TALK" button, the chat window, the "Main Room" dropdown, the "People (3)" list, and the "Exit - Lobby - Help" button in the bottom right corner.

**Please note:** Today's event will be recorded and archived at [www.polartrec.com](http://www.polartrec.com).





# Roll Call

## When called, please state your:

- ✓ Name
- ✓ School / Classroom
- ✓ The number of students participating from your classroom today



## *International Polar Year (IPY)*

The International Polar Year (2007-2009) is an exciting scientific campaign focusing on the world's polar regions!

IPY is a time for discovery, science, learning, and awareness about the polar regions with activities for youth, scientists, and the public.

***[www.ipy.org](http://www.ipy.org)***



# What is PolarTREC?

PolarTREC is a professional development experience in which K-12 teachers are paired with researchers in authentic polar research experiences.

In the next three years over 40 teachers from around the United States will join scientists in the Arctic and Antarctica in celebration of the International Polar Year!

***[www.polartrec.com](http://www.polartrec.com)***



# Today's Presenters:



**Michael Wing**  
PolarTREC Teacher  
Sir Francis Drake  
High School  
San Anselmo, CA



**Greg Korosec**  
Ph.D. Candidate in  
Archaeology at the  
State University of  
New York

# Where are Mr. Wing & the Team?





# ***Prehistoric Human Response to Climate Change***

## ***Yli-Ii, Finland***

by Michael R. Wing  
Sir Francis Drake High School  
San Anselmo, California

May 28, 2009



We are here  
*Yli-Ii*, Finland  
(near Oulu)







Michael Wing in the *Boreal Forest*





We are a team of over twenty *archaeologists* and students from three Universities:

The State University of New York at Buffalo (USA)

McGill University in Montreal, Quebec (Canada)

The University of Oulu (Finland)



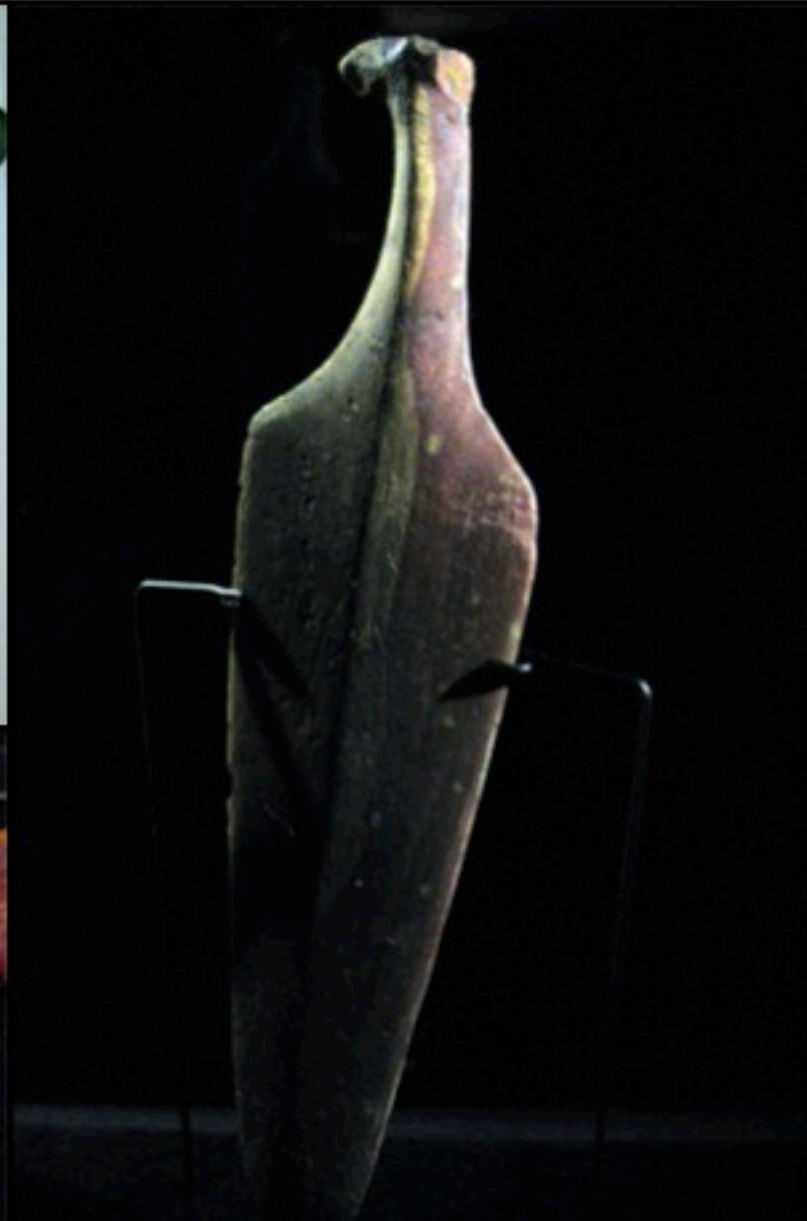


We study the *Kierikki People*, stone age hunter-gatherers who lived here 5000 years ago. They built row houses:





They made stone tools:



# They ate wild foods:





They wore animal skins:





They made pottery:





***Sea Level*** was dropping rapidly  
Three feet every 100 years!



9000  
Years  
ago



Kierikki people had to ***keep moving*** to stay on the coast – good house sites were not always abundant



5000  
Years  
ago





## *HOW CAN WE STUDY THEM?*

Very few of their things have survived:  
Holes in the ground, and bits of stone







# Three methods:

Survey

Soil Phosphorus

Excavate







## Survey:

- Walk a contour line in the forest
- Look for shallow pits in the ground
- Map them with **GPS** (Global Positioning System)
- Sometimes do a “Shovel test”





## Soil Phosphorus

- Sample soil using coring device
- Test for ***phosphorus***
- Places where people lived have more phosphorus





## Excavate

- Not doing as much this year as other years
- Mostly surface surveys
- Some ***geological trenches*** at earthworks called “The Thing”







## What we know so far:

- 5,500 – 5,000 years ago ***Kierikki people*** were living in sturdy and well-build row houses.
- Their communities were very large, stable and prosperous, for hunter-gatherers.
- After that (~4000 years ago) people here lived in smaller, more scattered settlements in smaller, less organized houses.
- ***Something in their environment had changed.***



## Human progress is not continuous

- Sometimes, successful societies revert to simpler ways in response to changes in sea level or climate.
- Remember that **we** live in a time when sea level and climate are changing more rapidly than ever before.





## There's a lot we don't know:

- Did they really live only on the coast?
- Why, exactly, did they abandon their communal row-house way of life?
- Did sub-arctic peoples in other parts of the world (Canada, Russia) experience the same changes?

Meanwhile, we are seeing a lot of nature in the Finnish woods























**The End  
Questions?**



**Live from IPY!**

**Register for Upcoming Live Events at :  
[www.polartrec.com!](http://www.polartrec.com)**





# Thank You!

*The archive of this event will be available shortly at:*

***[www.polartrec.com!](http://www.polartrec.com)***

*If you have further questions, please contact us at: [info@polartrec.com](mailto:info@polartrec.com)  
or call 1-907-474-1600*

