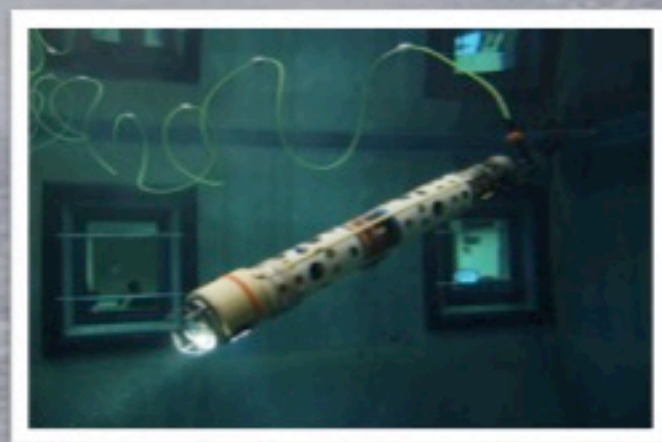




Welcome to Live from IPY!

With Michele Cross and the
SCINI team in Antarctica



13 November 2009

7:30 AM Alaska Standard Time

[8:30AM PST, 9:30AM MST,

10:30AM CST, 11:30 AM EST]



Raise your hand to ask a question

List of all participants

Return to the lobby or exit

Slides will be shown here

If using VOIP, press and hold here to talk

Your connection strength

'Chat' with one person or the entire group

The control bar includes a connection strength indicator, a 'TALK' button, and icons for audio, video, and chat. The chat area shows a message: "You have entered the lobby. You have entered 'Arctic Research Consortium of the United States (ARCUS)'. Your media format is WimbaMedia. You say, 'I'm going to change the slide momentarily to show the one I need for my new screen shot?'". The participant list shows three people: Kristin_Timm, kristina_creek, and Kristin_Timm.

Please note:

- Participant using the telephone can mute/unmute by pressing *6 on the phone.
- Today's event will be recorded and archived.

Roll Call

When called, please state your:

- ✓ Name
- ✓ School / Institution
- ✓ The number of students participating with you in the same location



International Polar Year (IPY)

The International Polar Year (2007-2009) is an exciting scientific campaign focusing on the world's polar regions!

IPY is a time for discovery, science, learning, and awareness about the polar regions with activities for youth, scientists, and the public.

www.ipy.org



What is PolarTREC?

PolarTREC is a professional development experience in which K-12 teachers are paired with researchers in authentic polar research experiences.

In the next three years over 40 teachers from around the United States will join scientists in the Arctic and Antarctica in celebration of the International Polar Year!

www.polartrec.com



Antarctic Undersea ROV 2009

Project SCINI





Antarctica

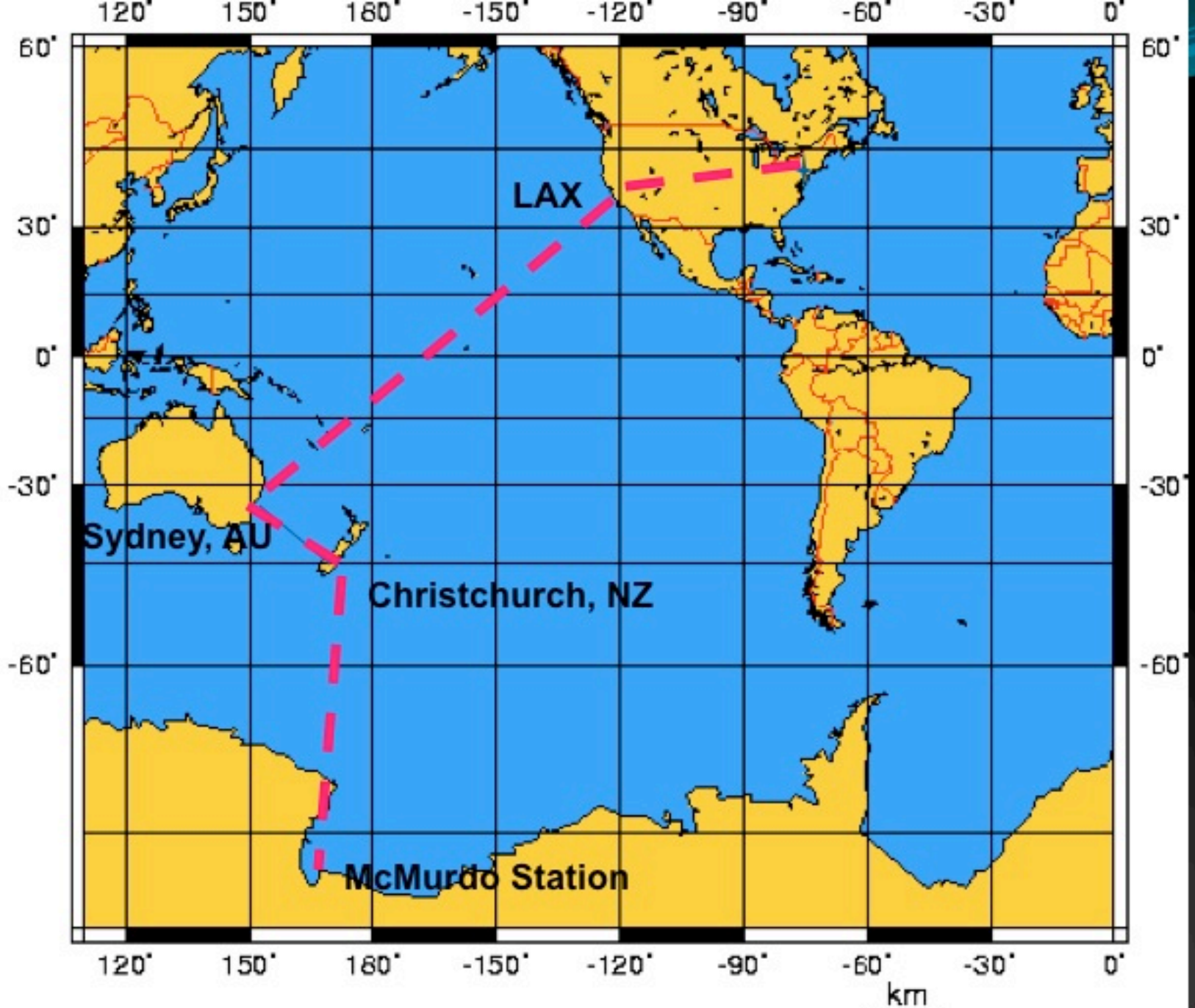
The **-est** Continent

coldest

windiest

driest

highest



McMurdo Station





The Team



Henry Kaiser
Film Artist
Education &
Outreach
Specialist



François Cazenave
Mechanical Engineer



Marco Flagg
Navigator

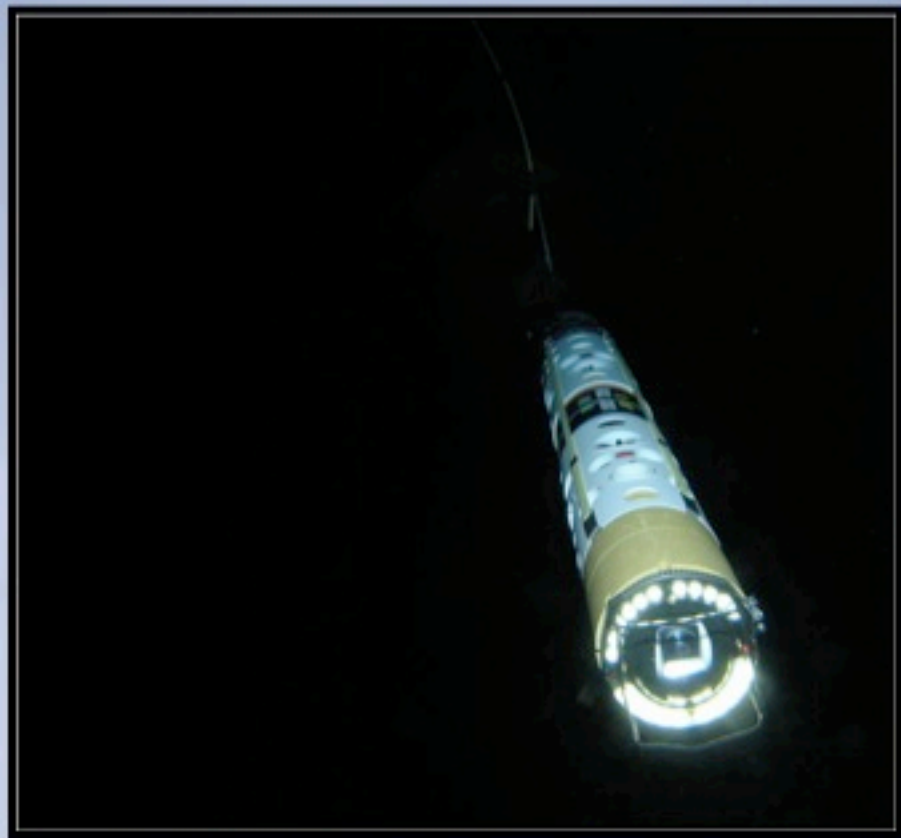


Mark Walsh
Physics Teacher
Weather Observer



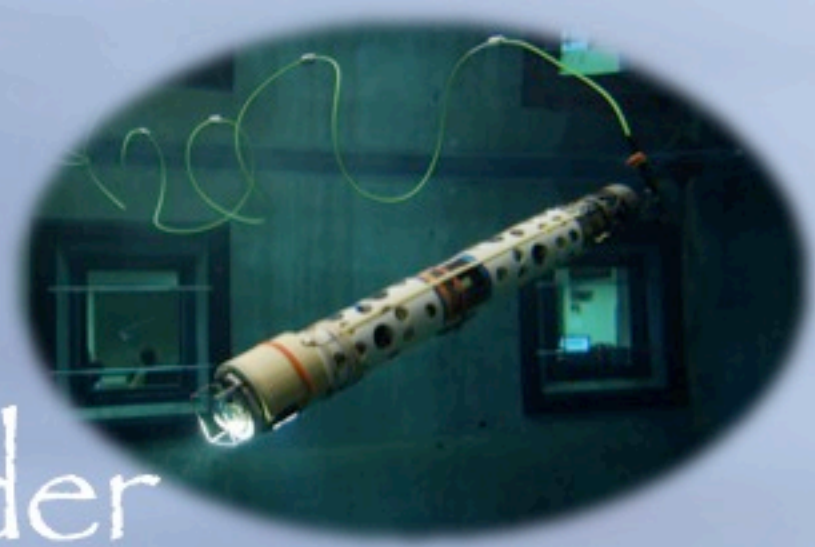
Michele Cross
PolarTREC
Teacher

And most importantly...



SCINI

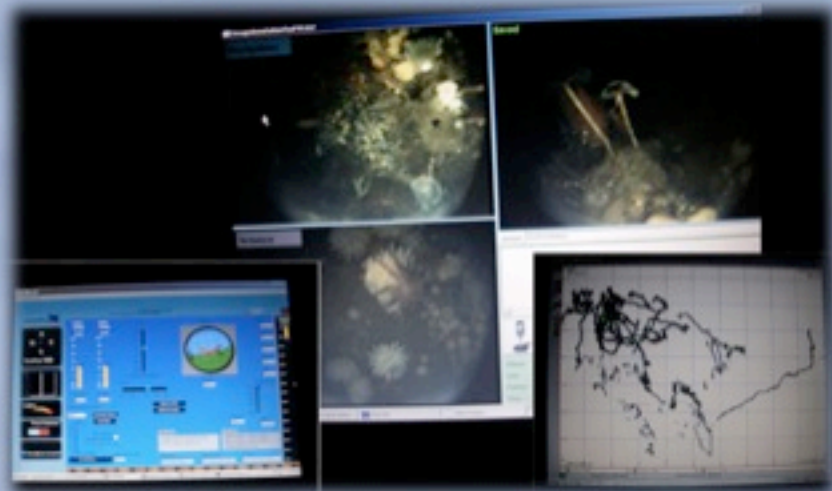
Submersible



Capable of Under
Ice



Navigation and
Imaging

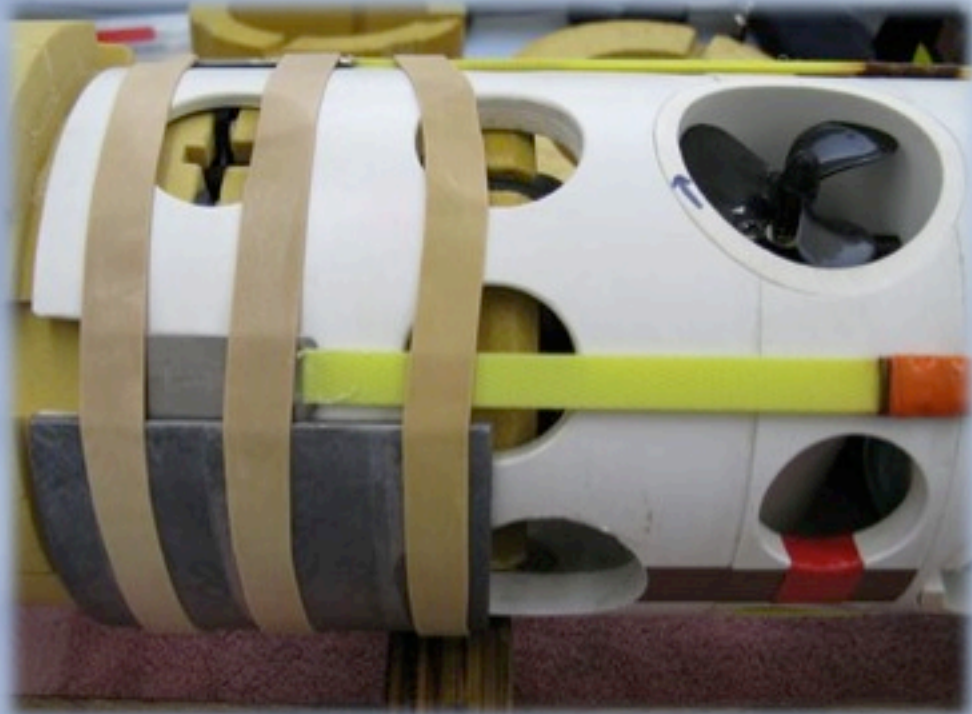


What Makes SCINI Unique?





And...



BEFORE...



AFTER...



WHITE OUT OUTSIDE...



WHITE OUT INSIDE...



COLD



ICE



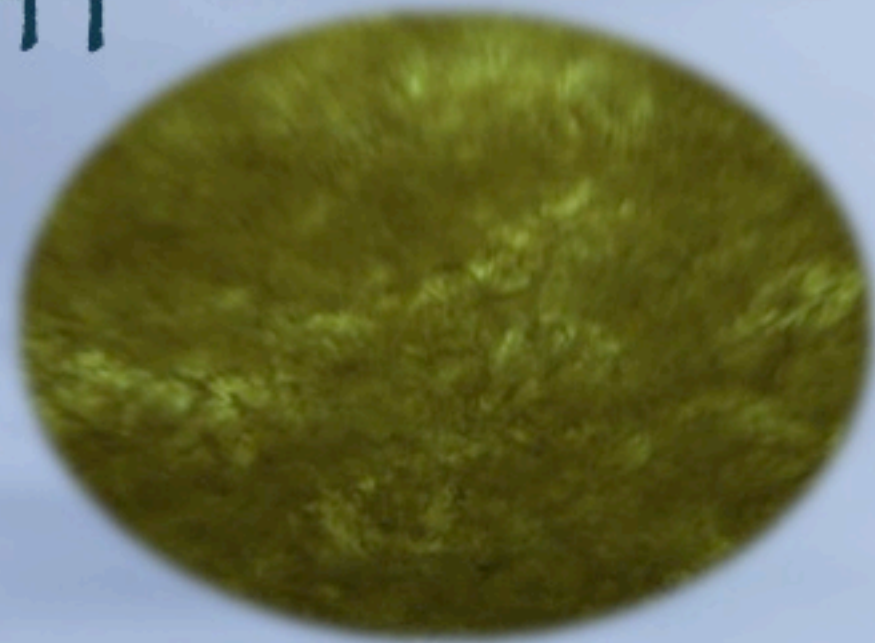
ICE



ICE



LIGHT



PRESSURE



PRESSURE



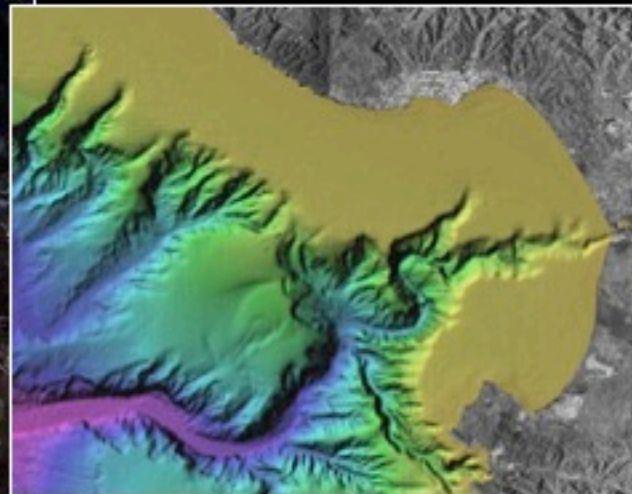
SCINI Goals



Photo by Jesse Huff Christensen



Photo by Heidi Kaiser



- To locate new research sites and assess their suitability with minimal logistic costs.
- To reach depths below SCUBA diving limits.
- To create initial maps of seafloor areas.

What will we be doing?

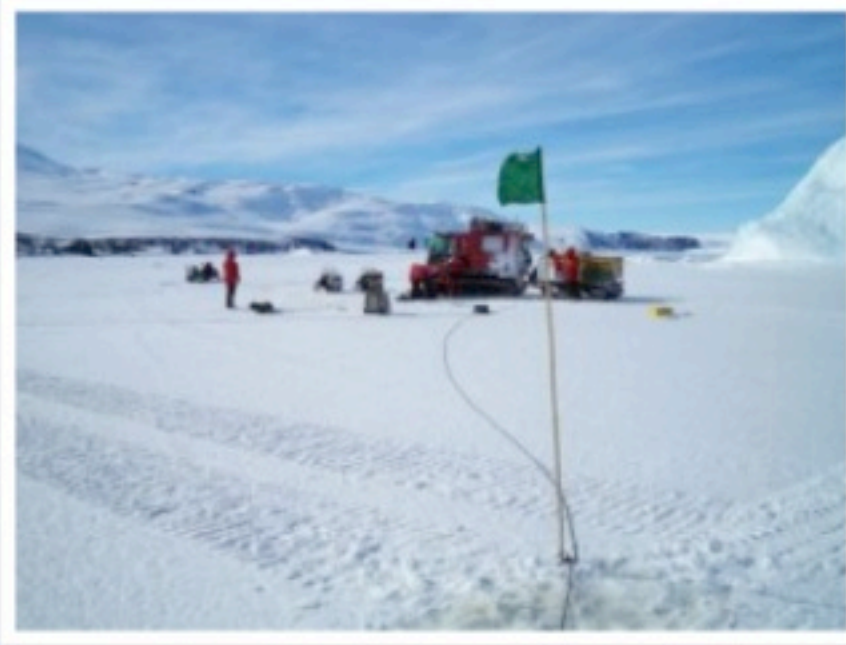
- testing a new camera set up



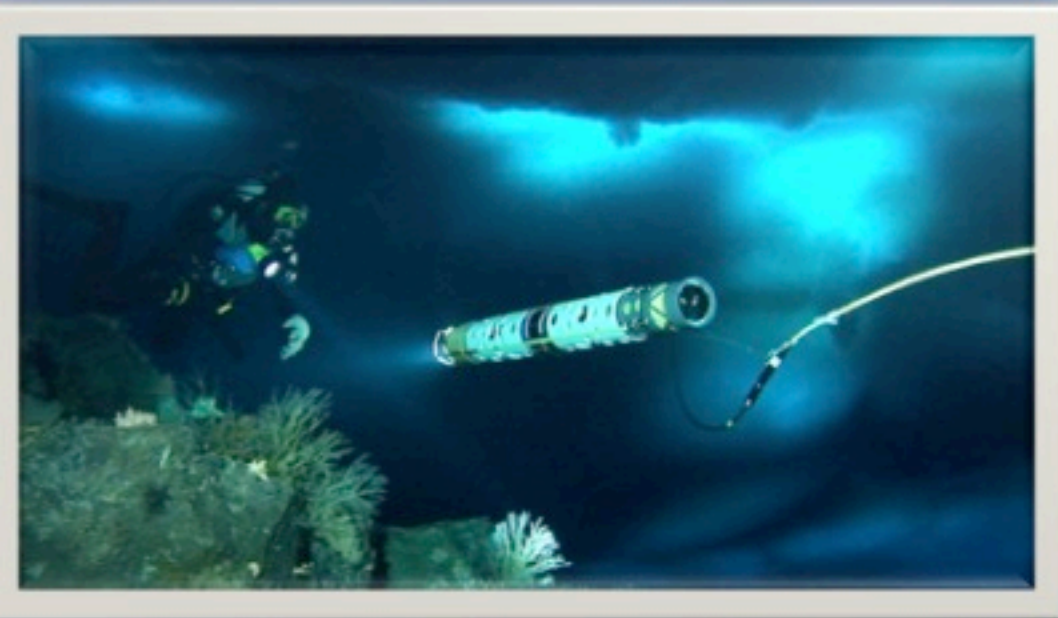
• Developing software to make it easier to drive SCINI



Testing the new wireless Southstar Navigational System



What else is under there?



Bratina Island



Bratína Island





Register for Upcoming Live Events at :
www.polartrec.com!

Thank You!

The archive of this event will be available shortly at: www.polartrec.com!

If you have further questions, please contact us at:
info@polartrec.com or call 1-907-474-1600

