



Welcome to Live from IPY!

With Gary Wesche and the
CReSIS team in Antarctica




7 January 2010



Wimba Classroom - Arctic Research Consortium of the United States (ARCUS)

WELCOME TO WIMBA



ARCTIC RESEARCH CONSORTIUM OF THE UNITED STATES

Connection strength: [Signal strength icon]

TALK [Microphone icon]

Options [Settings icon]

Exit - Lobby - Help

Chat history:
You have entered the lobby.
You have entered 'Arctic Research Consortium of the United States (ARCUS)'.
Your media format is WimbaMedia.
You say, "I'm going to change the slide momentarily- to show the one I need for my new screen shot?"

To: Main Room

People (3)
Kristin_Timm
kristina_creek
Kristin_Timm

Slides will be shown here

If using VOIP, press and hold here to talk

Your connection strength

'Chat' with one person or the entire group

Raise your hand to ask a question

List of all participants

Return to the lobby or exit

Please note:

- Participant using the telephone can mute/unmute by pressing *6 on the phone.
- Today's event will be recorded and archived.

Roll Call

When called, please state your:

- ✓ Name
- ✓ School / Institution
- ✓ The number of students participating with you in the same location



International Polar Year (IPY)

The International Polar Year (2007-2009) is an exciting scientific campaign focusing on the world's polar regions!

IPY is a time for discovery, science, learning, and awareness about the polar regions with activities for youth, scientists, and the public.

www.ipy.org



What is PolarTREC?

PolarTREC is a professional development experience in which K-12 teachers are paired with researchers in authentic polar research experiences.

In the next three years over 40 teachers from around the United States will join scientists in the Arctic and Antarctica in celebration of the International Polar Year!

www.polartrec.com

CReSIS Manned Aerial Surveys of the West Antarctica Ice Sheet

Can you hear me now?

Byrd Surface Camp, Antarctica



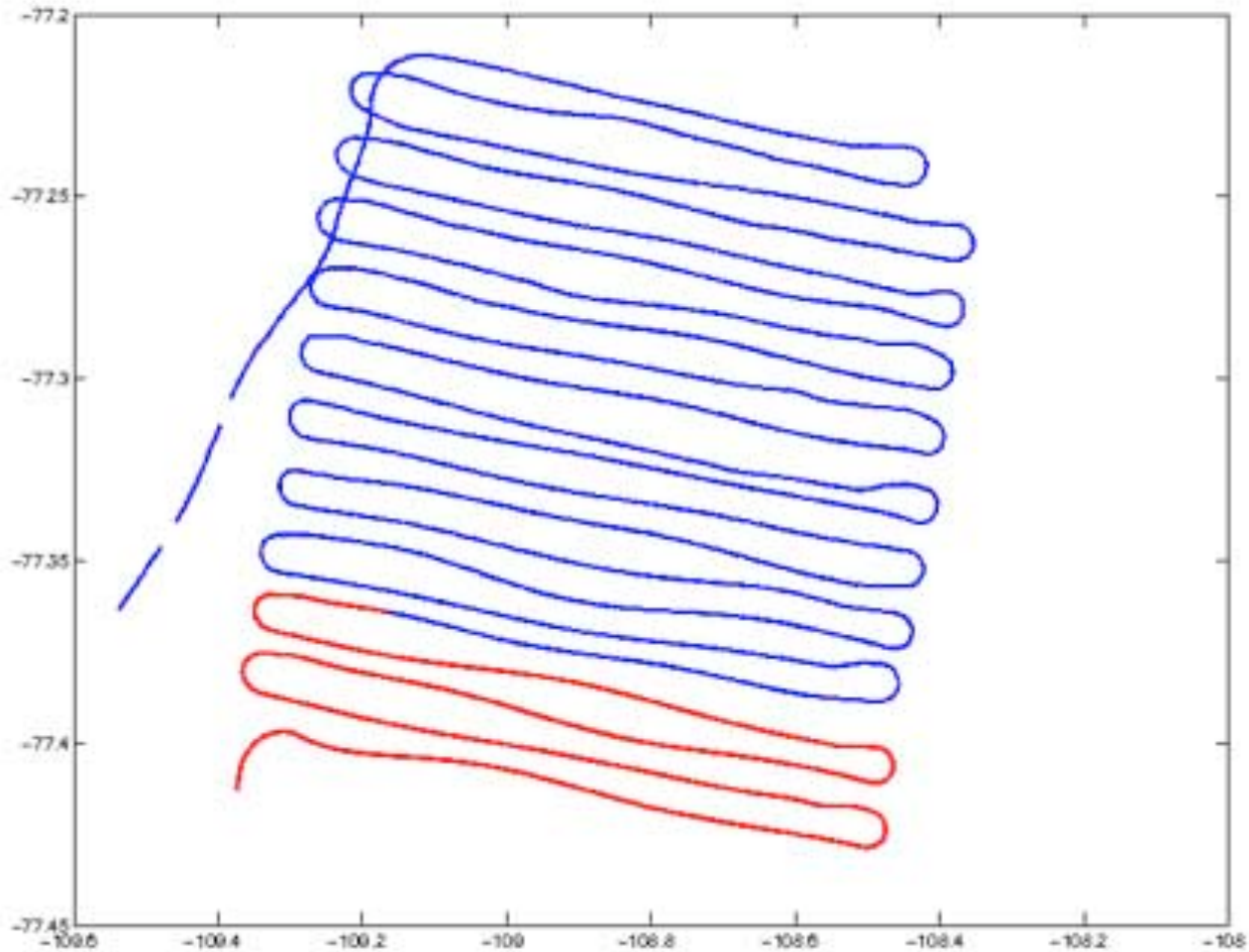
The CReSIS Team I-189



Left to right: Pilot Lexi, Chad, Keith, Logan, Gary, Keith, Cameron, Fernando, Co-pilot Lee



The Flight Plan!

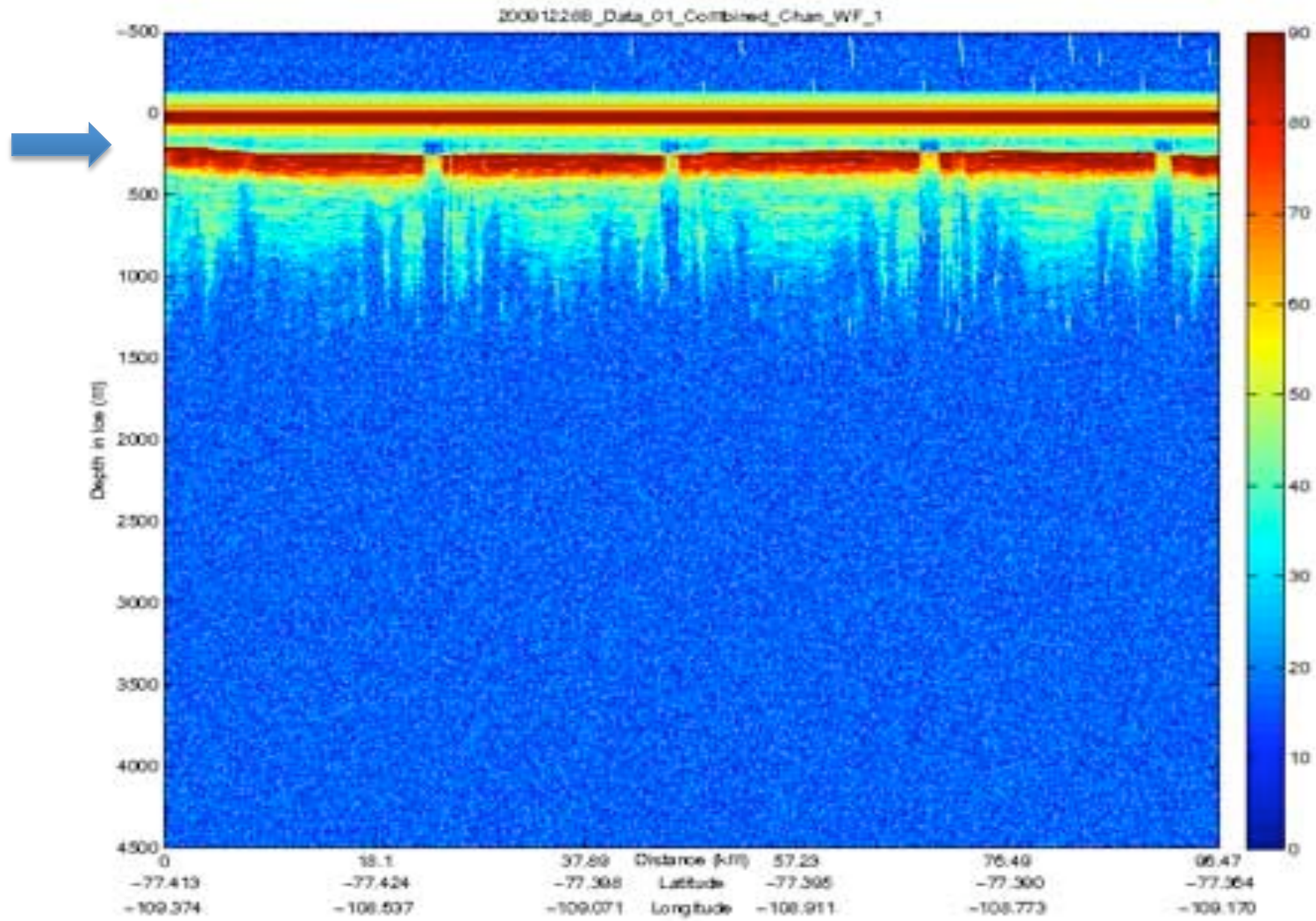


Aerial Views



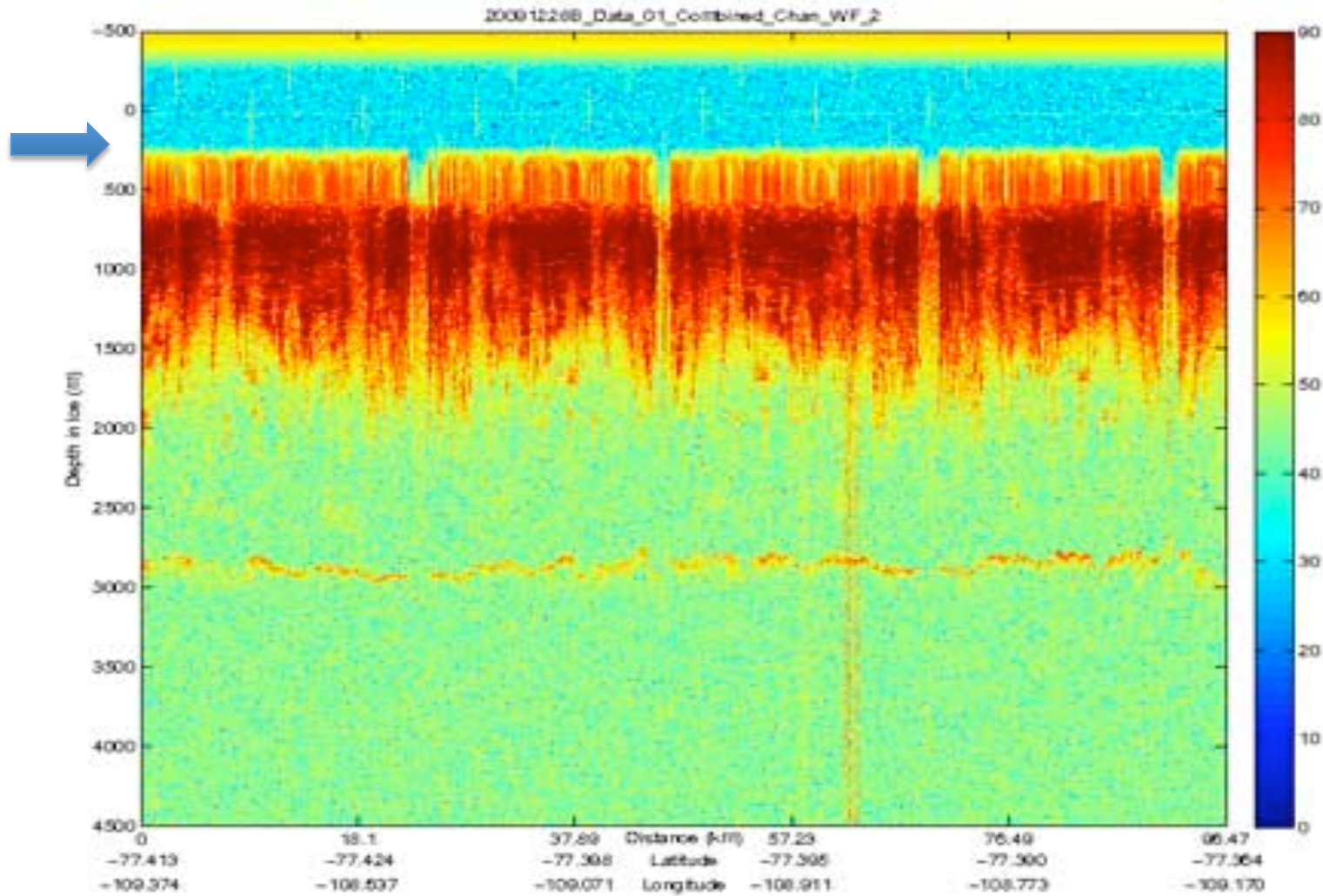
West Antarctic Ice Sheet from the Air

Radar Data Graph #1



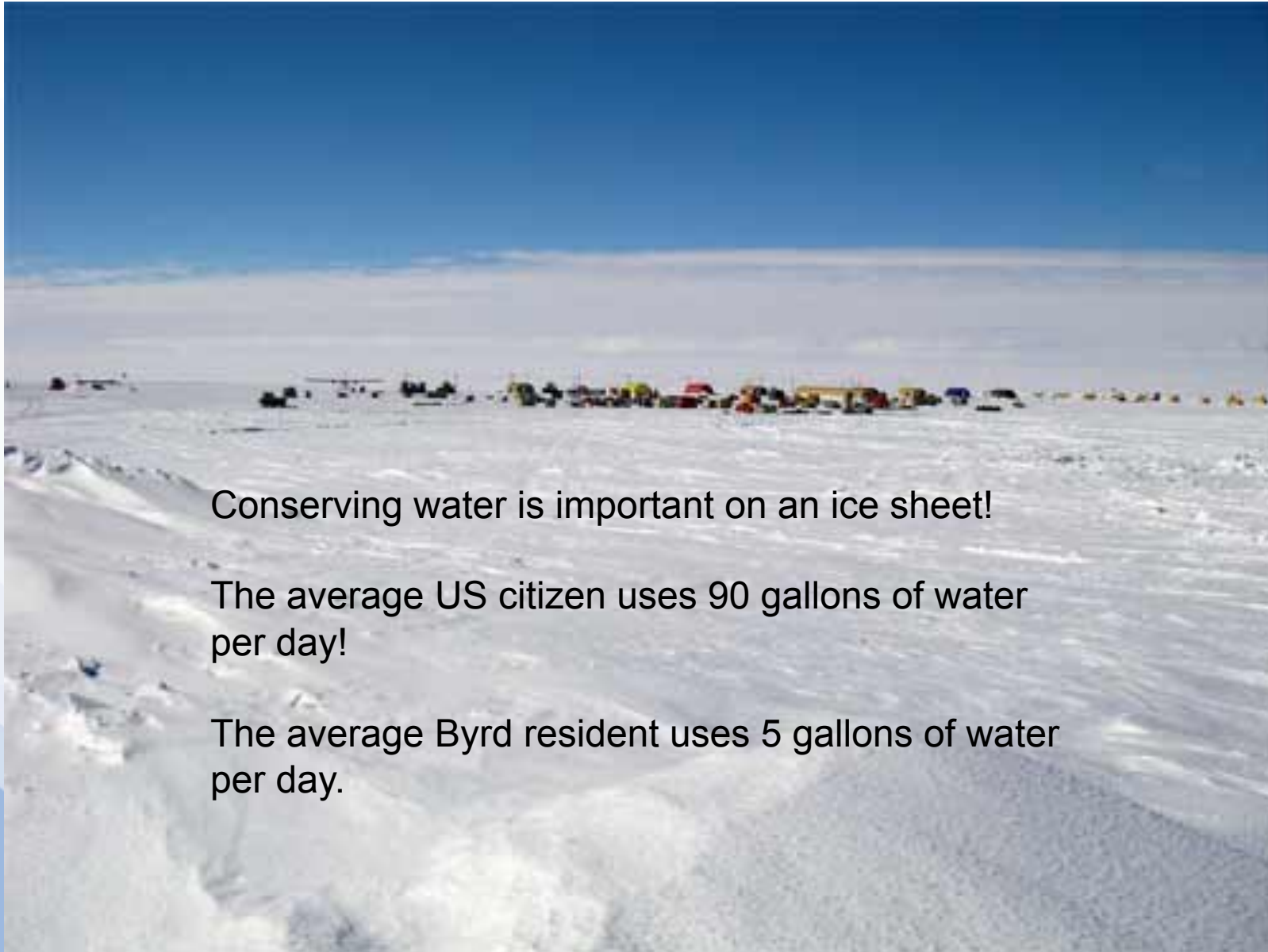


Radar Data Graph #2





Live on an Ice Sheet



Conserving water is important on an ice sheet!

The average US citizen uses 90 gallons of water per day!

The average Byrd resident uses 5 gallons of water per day.

Melting Snow

Shovel



Snow from "Snow Mine"



Snow Can



Melter



Water Storage



Filter & Heater



Field Science





POLENET

**POLENET is setting up GPS and seismic stations in the polar regions ---
<http://polenet.org>**



**Megan Berg
Outreach Coordinator
megan.berg.guest@byrd.usap.gov
berg.132@osu.edu
(303) 877-0597**



Many Talents

Cameron – Electrical Engineer...Cookie Engineer





Fun in the Sun!



Imagine the Possibilities



Questions?





Live from IPY!

Register for Upcoming Live Events at :
www.polarartrec.com!

Thank You!

The archive of this event will be available shortly at: www.polartrec.com!

If you have further questions, please contact us at:
info@polartrec.com or call 1-907-474-1600

