

Welcome to ***PolarConnect***

With Tina Sander and the Antarctic
Seafloor Ecology Team

Friday 3 December 2010

9:00 am AKST

(10:00 am PST, 11:00 am MST, 12:00 pm CST, 1:00 pm EST)



WELCOME TO WIMBA



ARCTIC RESEARCH CONSORTIUM OF THE UNITED STATES

Raise your hand to ask a question

List of all participants

Return to the lobby or exit

Slides will be shown here

If using VOIP, press and hold here to talk

Your connection strength

'Chat' with one person or the entire group



TALK

Options

You have entered the lobby.

You have entered 'Arctic Research Consortium of the United States (ARCUS)'.

Your media format is WimbaMedia.

You say, "I'm going to change the slide momentarily to show the one I need for my new screen shot"

To: Main Room

People (3)

| | |
|----------------|-----|
| Kristin_Timm | ⊖ ⊕ |
| kristina_creek | ⊖ ⊕ |
| Kristin_Timm | ⊖ ⊕ |

Exit - Lobby Help

Please note:

- Participant using the telephone can mute/unmute by pressing *6 on the phone.
- Today's event will be recorded and archived.

Roll Call

When called, please state your:

- ✓ Name
- ✓ School / Institution
- ✓ The number of students and adults participating with you in the same location

What is PolarTREC?

PolarTREC is a professional development experience in which K-12 teachers are paired with researchers for 2-6 week research experiences in the polar regions.

From 2010-2013, nearly 50 teachers from around the United States will join scientists in the Arctic and Antarctica to learn about science, the polar regions, and to share what they have learned with their students and communities.

Questions

To Ask a Question:

- ✓ Raise your hand with the “hand button”
- ✓ Type your question in the text chat box
- ✓ Speak loud and clear and directly into the phone to ask your question.

How do you do research in Antarctica?



What is the environment
like in Antarctica?





What are the habitats under the ice like?

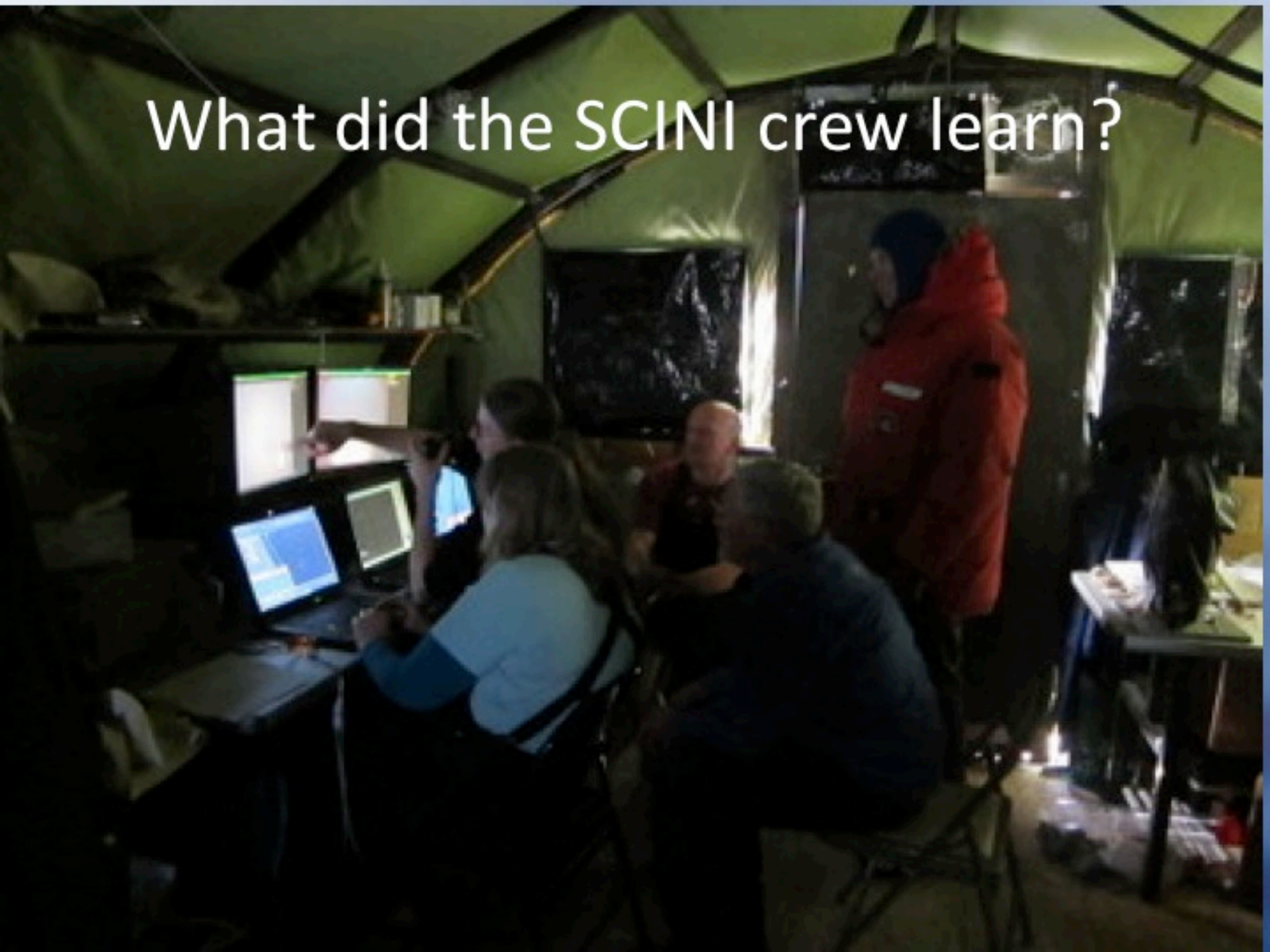
How thick
is the ice in
Antarctica?



What did the SCUB A
divers see?



What did the SCINI crew learn?



What was it like to explore Antarctica
100 years ago?





Who
stayed
here?

When?

What did
they do?

Did we see penguins?
What other critters and things
do they study in Antarctica?



Webinar #3

Live from Antarctica

with

Tina Sander and
members
of ICE AGED

Local time in McMurdo:

7 am

Saturday,

Dec. 4, 2010

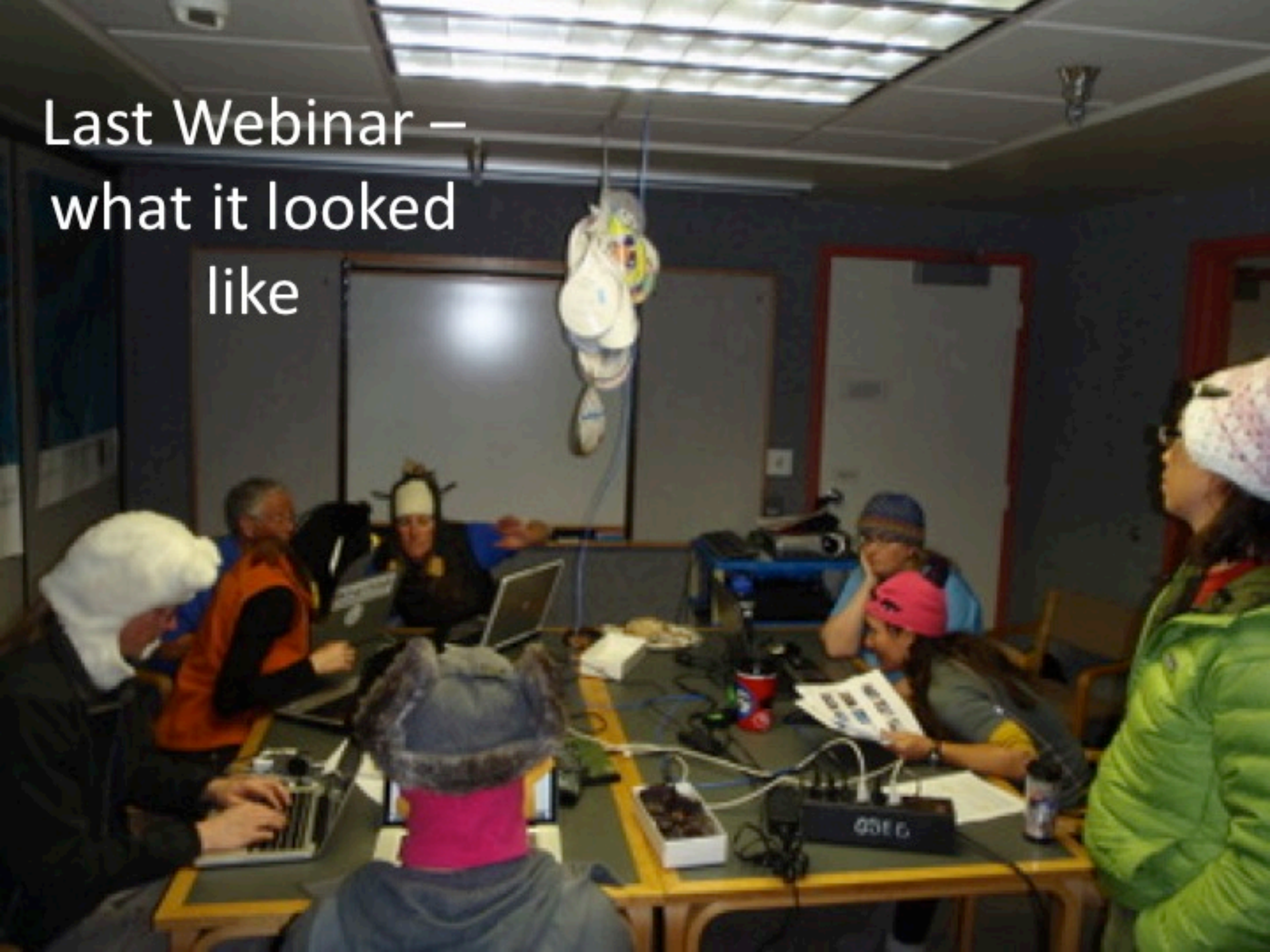


ICE AGED

Investigating **C**hange in **E**cology

in **A**ntarctica by **G**izmologists, **E**ducators, and **D**ivers

Last Webinar –
what it looked
like





McMurdo in the summer



Working Inside: the Crary Lab





Working on the Ice





Drilling Holes





How do
you get
SCINI
ready?



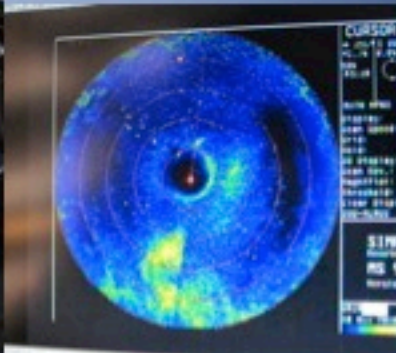


How do you launch
SCINI?





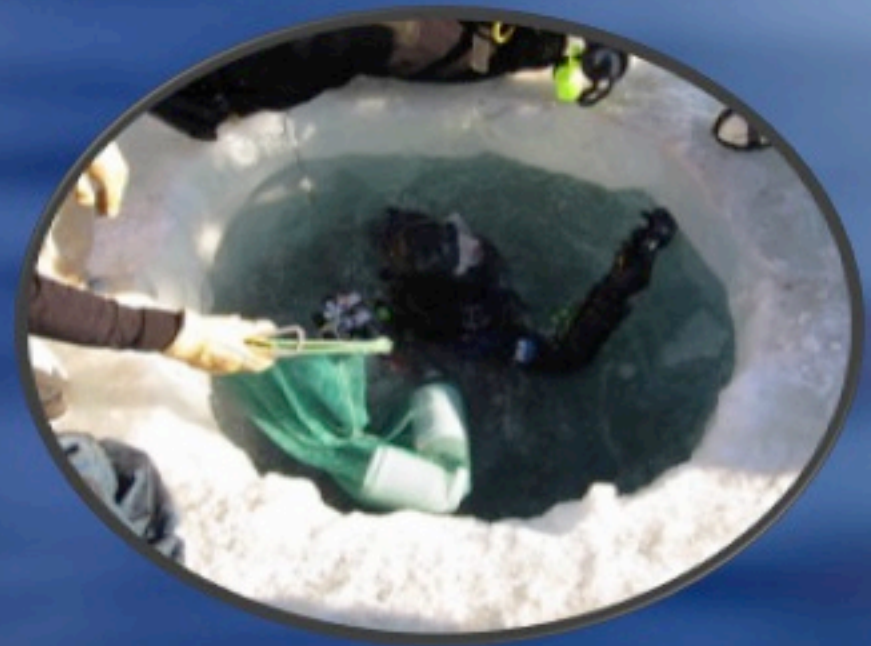
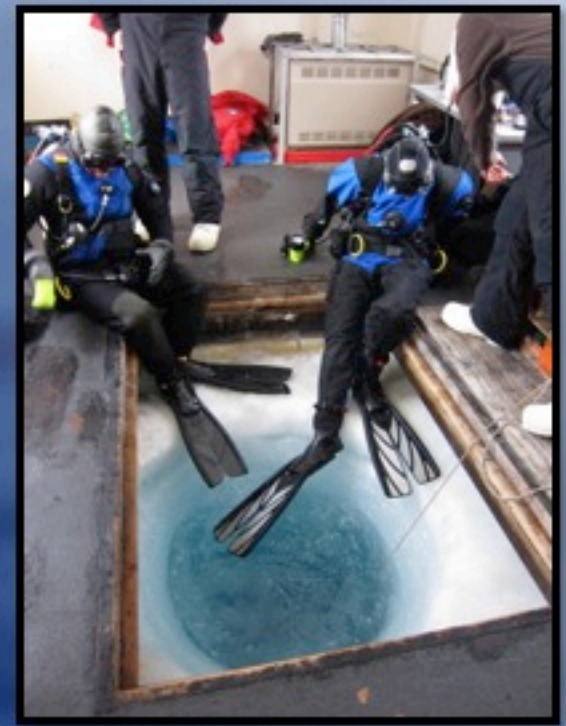
What did SCINI do?







What did the
divers do?









The Observation Tube

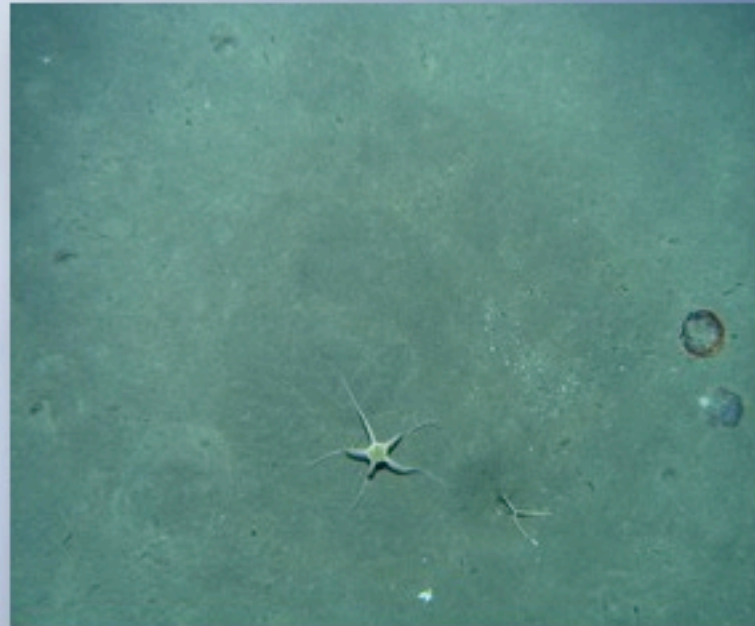
What happened to
the seafloor in
Antarctica in the last 50
years?



How do habitats differ with the currents and nutrients?

New Harbor and Salmon Bay

McMurdo





How do habitats differ at varying depths?

50 feet

100 feet





How do habitats differ with snow and ice cover?



Ice in Antarctica





What did I do?





^
New Zealand

Mount Bird

Penguins

ROSS ISLAND

MC MURDO SOUND

Cape Royd

Mount Erebus

Mount Terra Nova

Mount Terror

New Harbor

Cape Evans

Erebus Glacier
Ice Tongue

Ice Caves

Castle Rock



USA >

MC MURDO STATION

WILLIAMS ('WILLY') FIELD

ICE RUNWAY

SCOTT BASE

ROSS ICE SHELF

Bratina Island



South Pole
v

BLACK ISLAND

WHITE ISLAND

0 5 10 15 20 25 Miles

Digital coastline and contours:
Geographic Digital Database, 2000
North Polar Conformal Conic Projection
Meridians -76° 40' and -79° 20'





Seal Researchers



Field Camp



The Discovery Hut on Hut Point

What was life like 100 years ago?



Shackleton's Hut at Cape Royds

How did they do it?



The Terra Nova Hut at Cape Evans What happened here?



Penguin Colony





Thank you everyone!

























TEACHERS AND RESEARCHERS
EXPLORING AND COLLABORATING

Upcoming Events

Watch for and register for upcoming events at www.polarartrec.com!

PolarConnect Event with Lesley Urasky and the [Glacial History in Antarctica Expedition](#)

DATE: Tuesday, 14 December 2010 **TIME:** 5:00 PM AST (6:00 PM PST, 7:00 PM MST, 8:00 PM CST, 9:00 PM EST)

PolarConnect Event with Lesley Urasky and the [Glacial History in Antarctica Expedition](#)

DATE: Thursday, 6 January 2011 **TIME:** 12:00 noon AST (1:00 PM PST, 2:00 PM MST, 3:00 PM CST, 4:00 PM EST)

Thank You!

An archive of the event will be available shortly.

<http://www.polar-trec.com/polar-connect/archive>

