

Live from IPY! with Sarah Anderson

Live from the R/V Nathaniel B. Palmer in the Antarctic Seas



16 October 2007



Raise your hand to ask a question

List of all participants

Return to the Lobby or Exit

Slides will be shown here

'Chat' with one person or the entire group



What is PolarTREC?

PolarTREC is a professional development experience in which K-12 teachers are paired with researchers in authentic polar research experiences.

In the next three years over 40 teachers from around the United States will join scientists in the Arctic and Antarctica in celebration of the International Polar Year!

www.polartrec.com



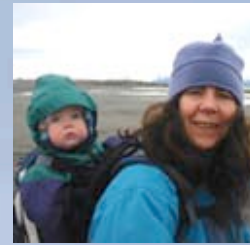
The PolarTREC Team



Wendy Warnick
PolarTREC PI
Executive Director



Helen Wiggins
Program Coordinator



Janet Warburton
PolarTREC
Project Manager



Katie Breen
PolarTREC
Project Manager



Kristin Fischer
PolarTREC
Project Assistant



Ronnie Owens
Web Developer



Ben Wade
Web Developer



Tina Buxbaum
Electronic Media
Project Manager

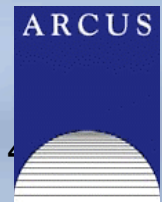


Zeb Polly
Systems Administrator



Joed Polly
Video Production

...with help from
the entire staff
at ARCUS





International Polar Year (IPY) **2007-2009**

The International Polar Year (2007-2009) is an exciting scientific campaign focusing on the world's polar regions!

IPY is a time for discovery, science, learning, and awareness about the polar regions with activities for youth, scientists, and the public.

www.ipy.org



Who are we talking with today?



Researcher

Stephen Ackley

University of Texas San Antonio
San Antonio, Texas

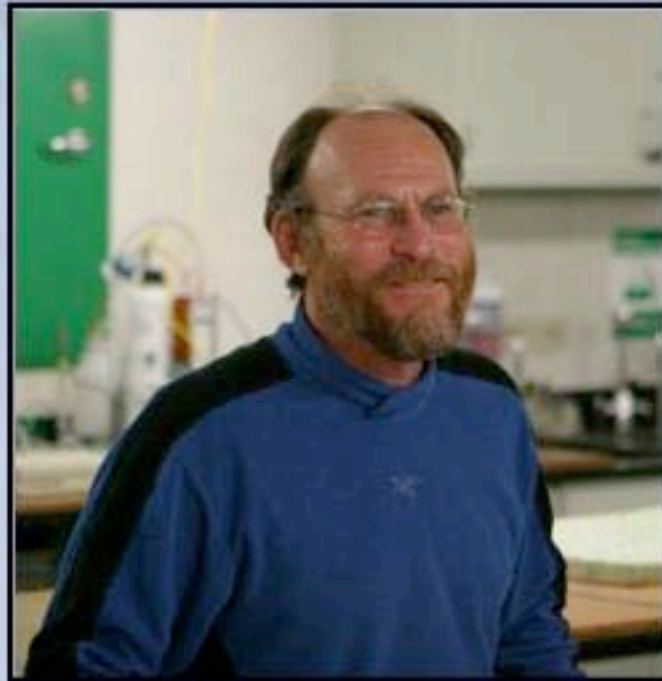
Teacher

Sarah Anderson

Boerne High School
Boerne, Texas



Steve Ackley
University of Texas at San Antonio
San Antonio, Texas



Brent Stewart
Hubbs-Sea World Research Institute
San Diego, California



Chris Fritsen
Desert Research Institute
Reno, Nevada



Jean-Louis Tison
Universite Libre de Bruxelles
Brussels, Belgium



SIMBA 2007 - Ice, Wind, and Fire



THE PROJECT:

SIMBA: Sea Ice Mass Balance in Antarctic Seas aboard the R/V Nathaniel B. Palmer

GOALS:

The team will be sampling sea-ice properties such as temperature, snow depth, ice thickness, meteorological conditions, ice biogeochemistry, and biology in order to investigate sea-ice processes.

DATES:

28 August - 2 November 2007

LOCATION:

Aboard the R/V Nathaniel B. Palmer in the Bellingshausen and Amundsen Sea in Western Antarctica. They departed from and will return to Punta Arenas, Chile.





RVIB N.B. Palmer



R/V Nathaniel B. Palmer



- Built in Louisiana in 1992
- 94 meters long
- Accommodates 37 scientists and 22 crew
- Named the *Nathaniel B. Palmer* to commemorate the American credited with first seeing Antarctica in 1820

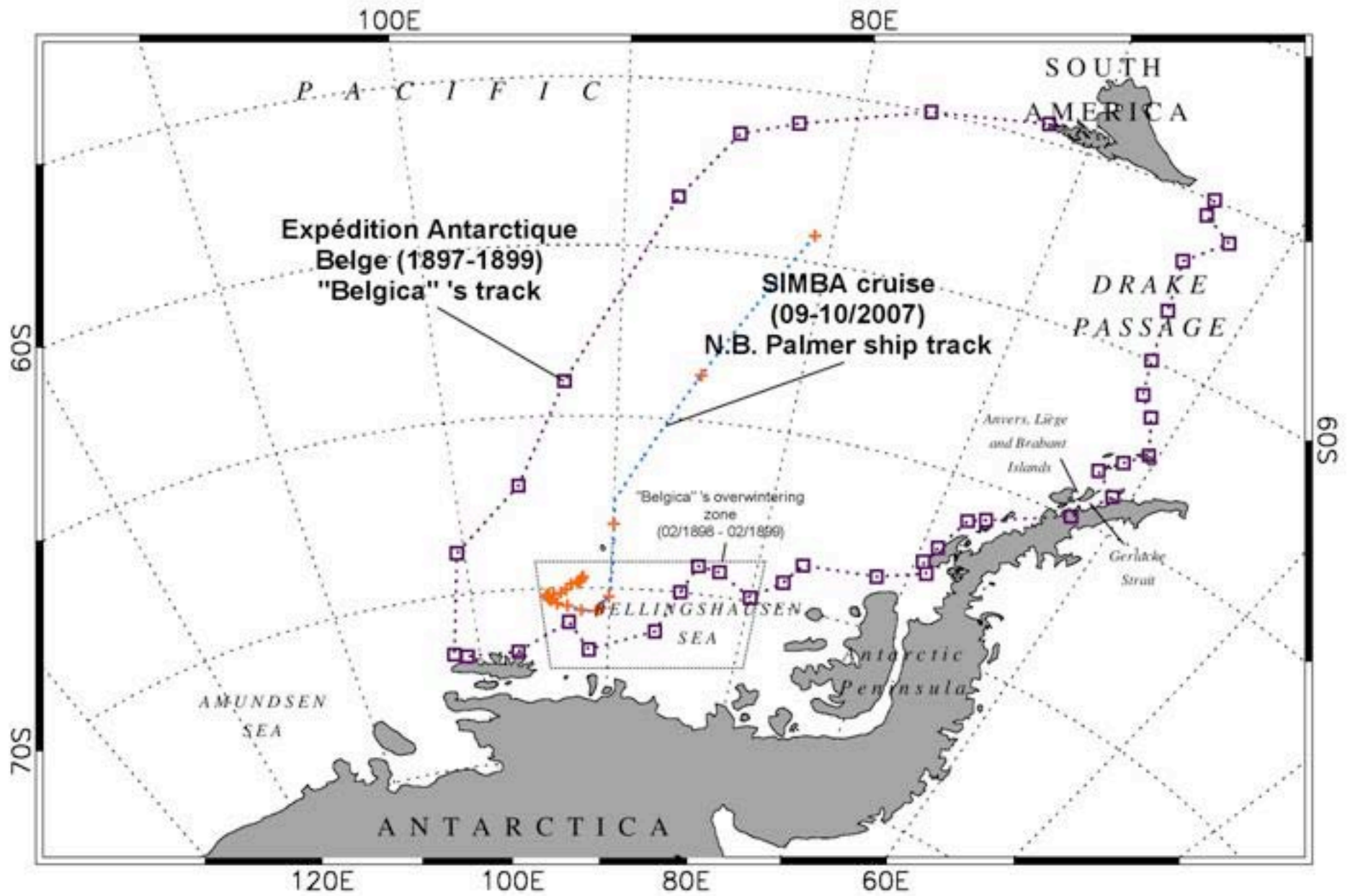
Sarah's Trip to Antarctica

- *San Antonio, TX*
- *Dallas, TX*
- *Santiago, Chile*
- *Punta Arenas, Chile*

- *Palmer Station, Antarctica*
- *Punta Arenas, Chile*

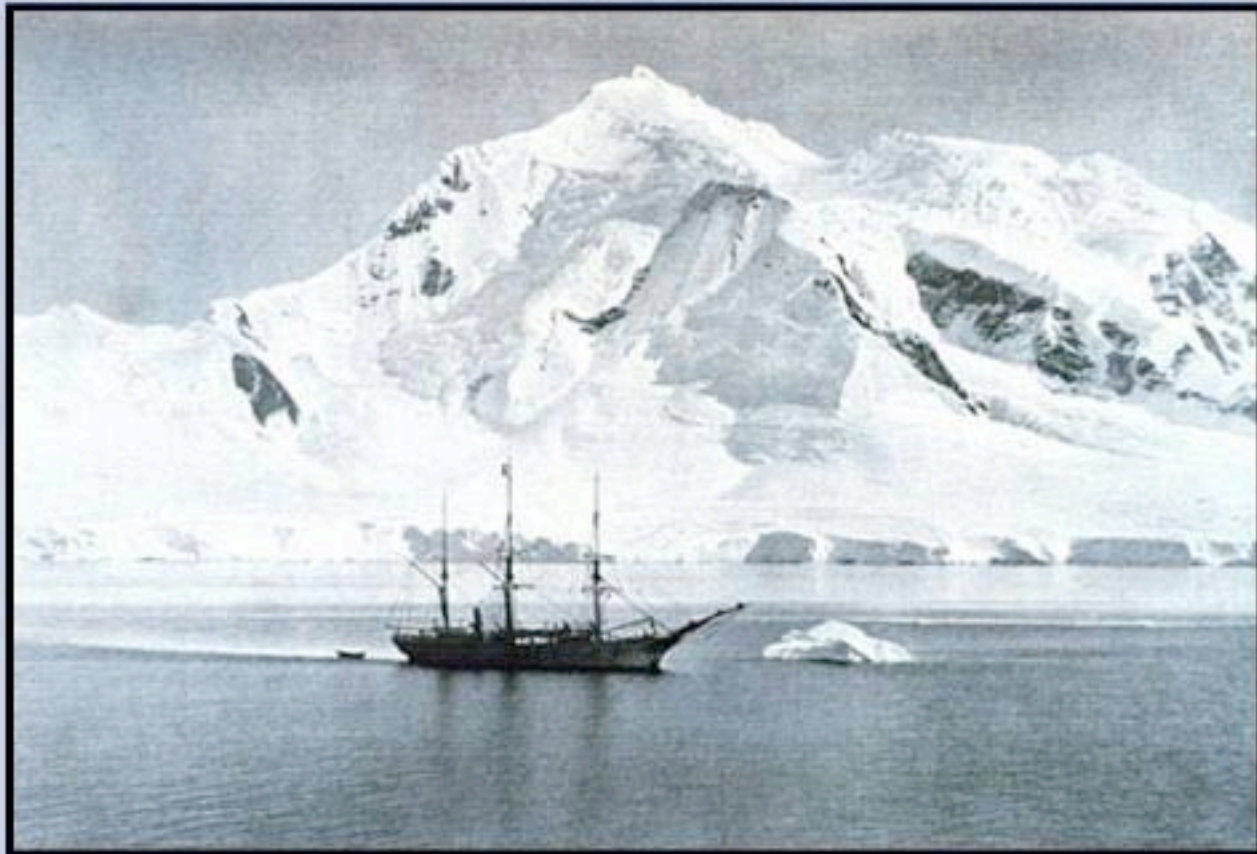
- *Bellinghousen & Amundsen Seas off the coast of Antarctica*

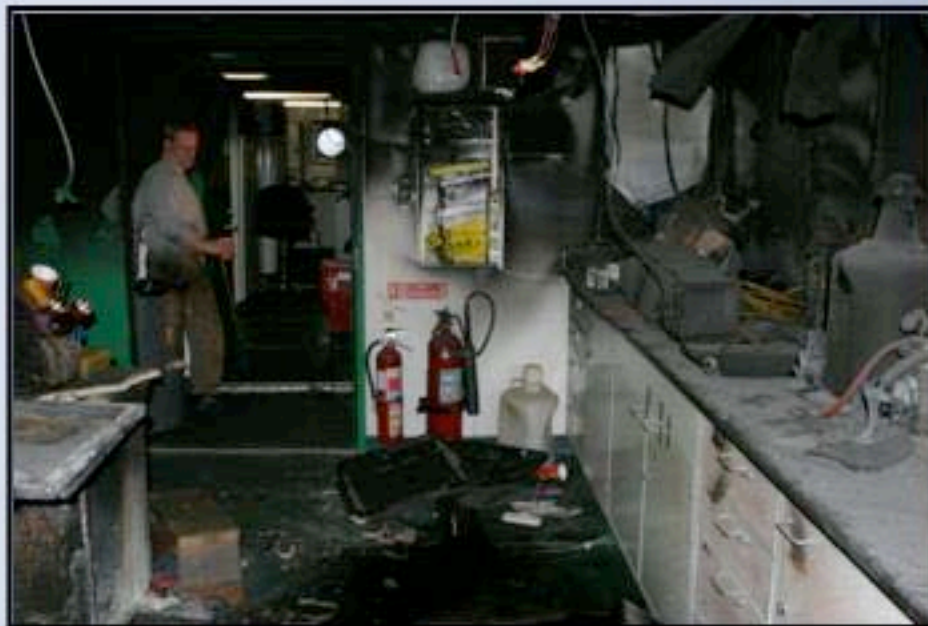




The Belgica

Antarctic Expedition 1897-99



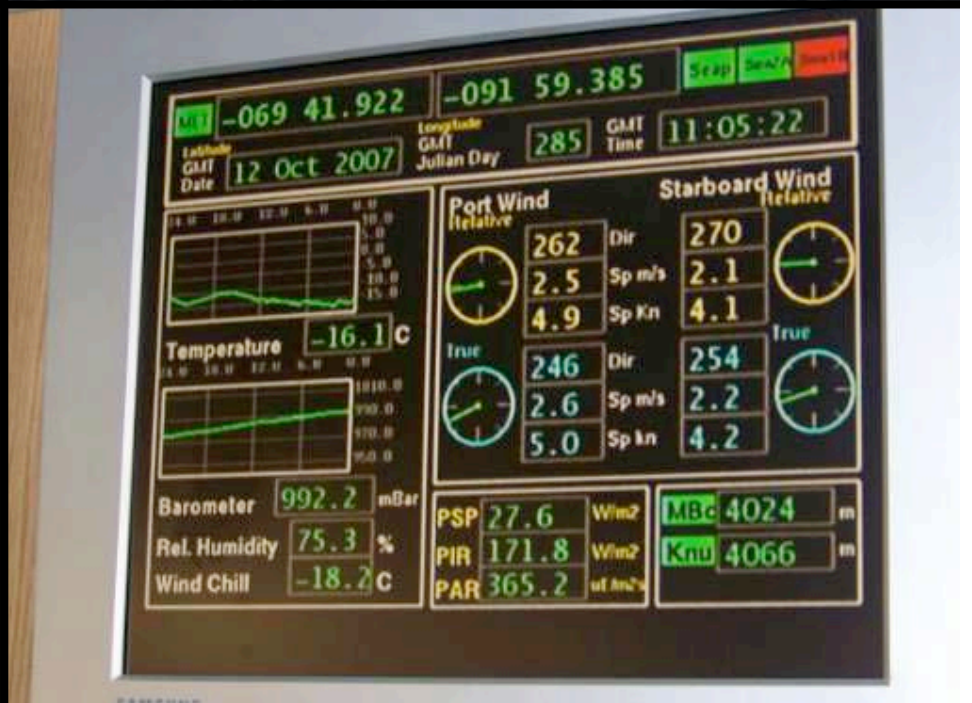


Ice



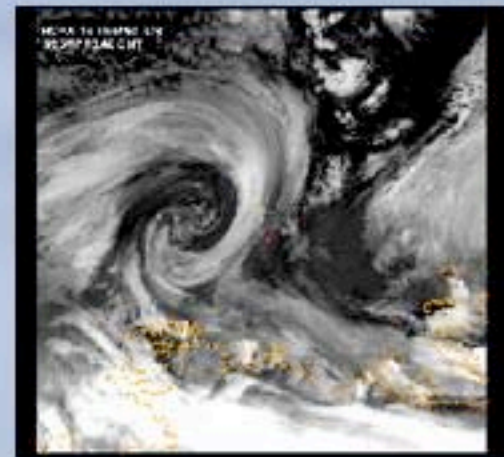
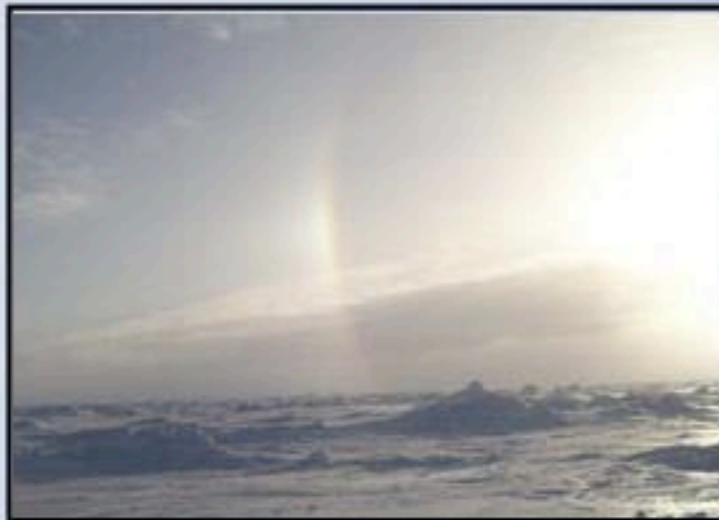


Ice Data & Observations





Wind and Weather





Data Collection – Field





Data Collection - Onboard





Lab Work

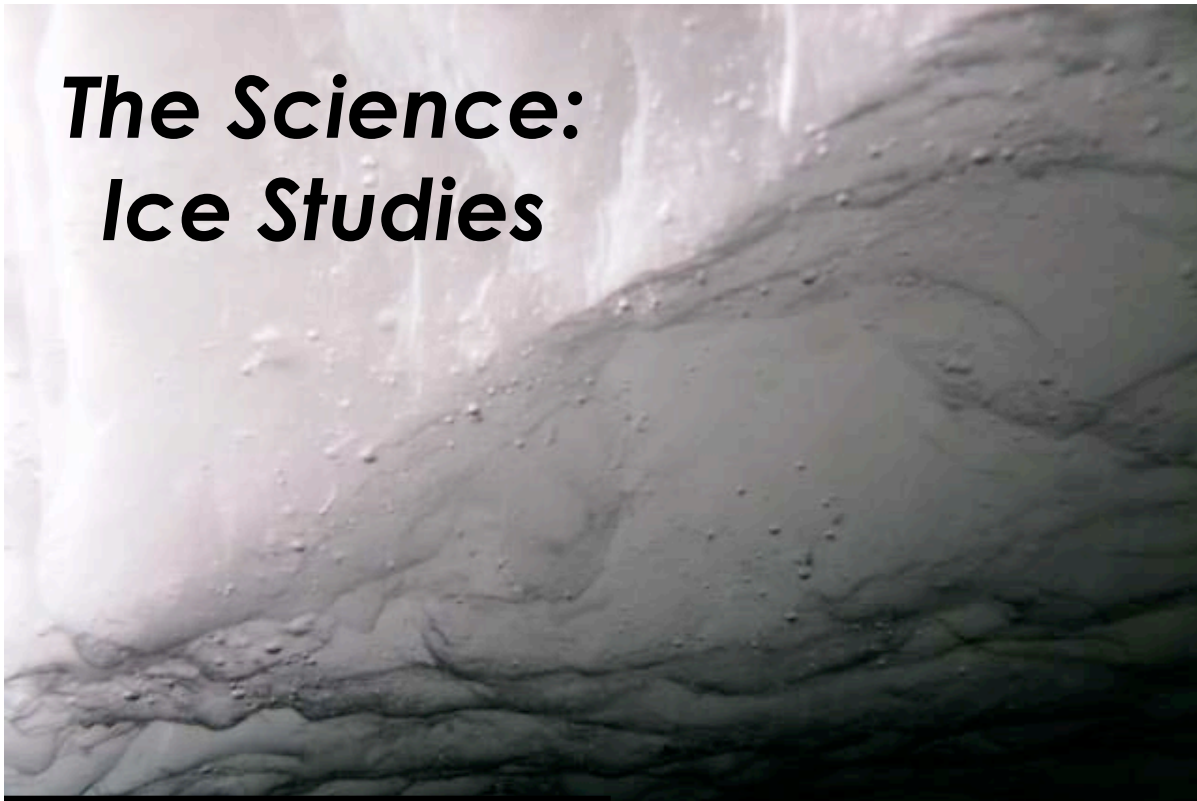


The Science: Water sampling



CTD Rosette & water samples

The Science: Ice Studies



Ice Coring

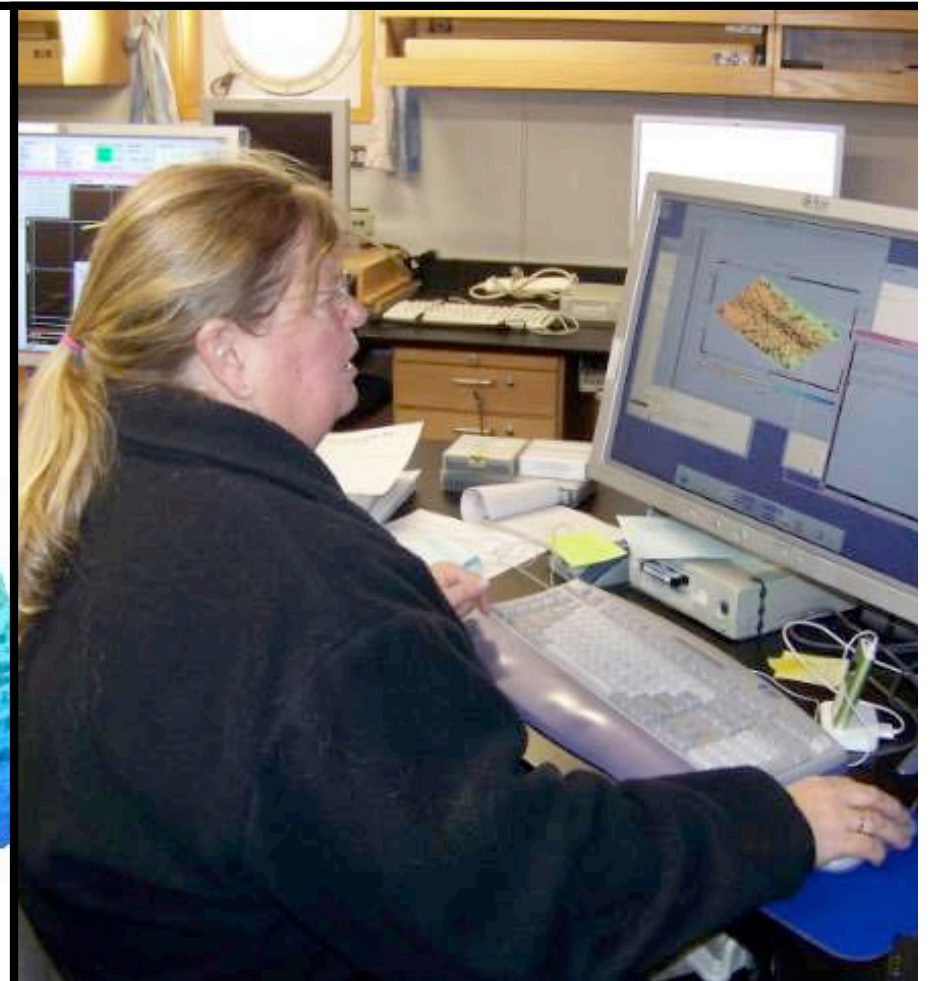
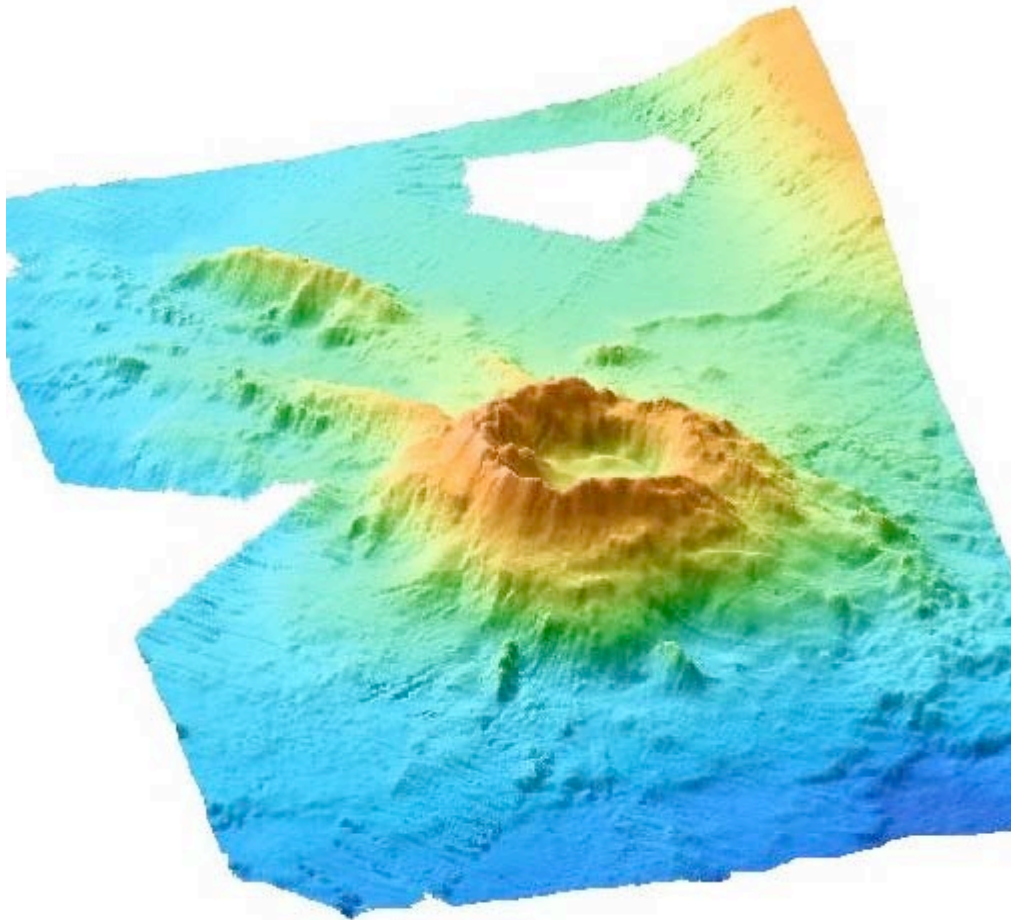
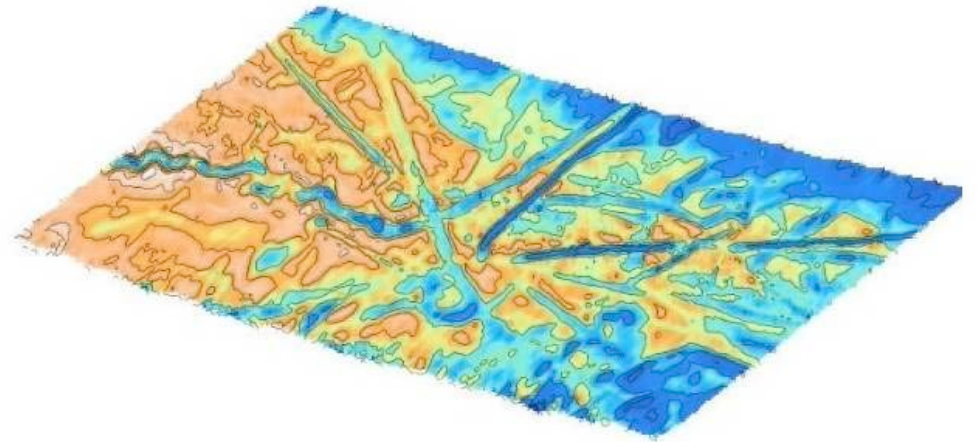


View from under the ice



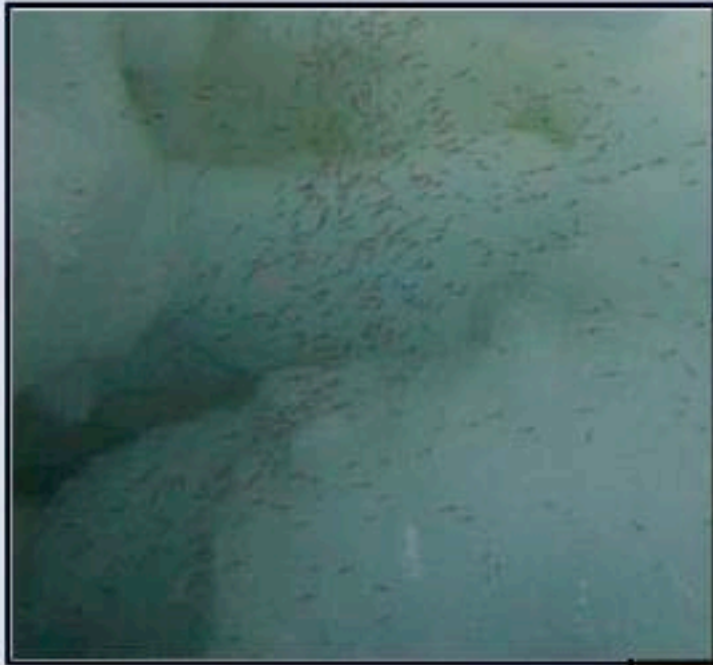
Bad Weather

Science: Underwater Bathymetry





Krill and Algae





Crabeater Seals







Fun on the Ship



Questions?



Check out and register for upcoming events!



23 October 2007 - Mindy Bell - McMurdo Station, Antarctica

13 November 2007 - Mindy Bell - McMurdo Station, Antarctica

Register for many more this fall & winter at www.polarrec.com.

*Thank
You!*



*If you have further questions,
please contact us at
info@polartrec.com or call
1-907-474-1600*





Sun Dog

