

Super Science Saturday Live From Antartica!

NCAR Mesa Lab
Saturday 27 October 2007

Sunday 28 October 2007
McMurdo Station, Antarctica

This event will be recorded and archived at www.polartrec.com.



International Polar Year (IPY) 2007-2009

The International Polar Year (2007-2009) is an exciting scientific campaign focusing on the world's polar regions!

IPY is a time for discovery, science, learning, and awareness about the polar regions with activities for youth, scientists, and the public.

www.ipy.org

Who are we talking with today?



Mindy Bell



Stacy Kim



**Christina
Riesselman**



**Louise
Huffman**



Kari Bassett

Antarctica's US Bases



ANDRILL

ANTARCTIC Geologic DRILLing



Christina Riesselman

Micro-Paleontology



Louise Huffman

ANDRILL Coordinator of
Education



Kari Bassett

Sedimentology,
Stratigraphy

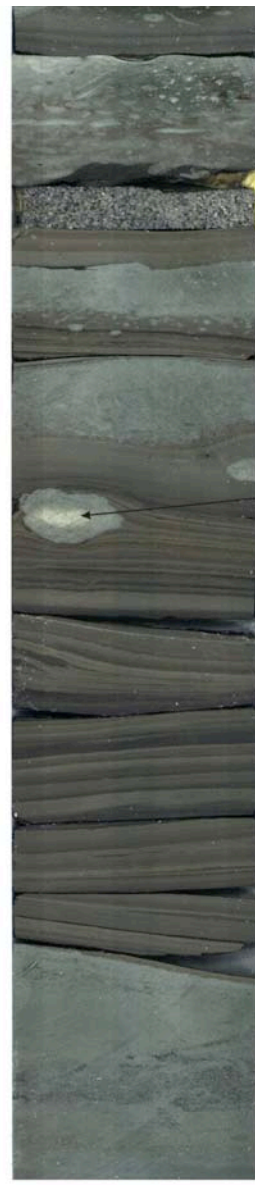
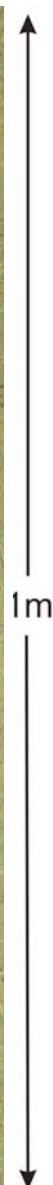
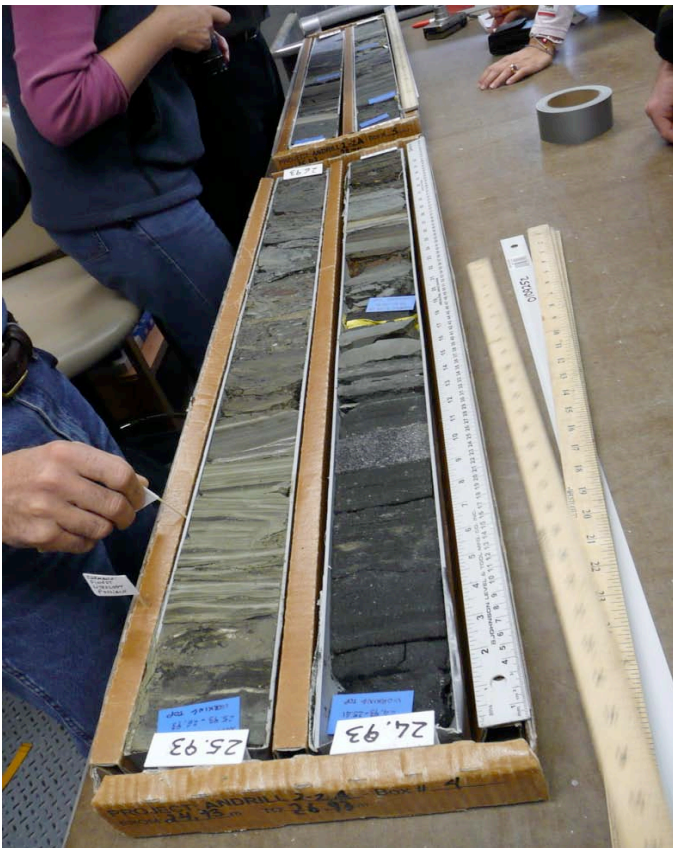


ANDRILL





Characterizing the Core



Bioturbated sandy-siltstone

Bioturbated sandy-siltstone
Sandy-silt filler burrows

Dropstone

mm-laminated silty claystone
basaltic volcan (reworked)

Bioturbated sandy-siltstone



PolarTREC & SCINI



Stacy Kim
Benthic ecologist
Moss Landing Marine Labs, CA
11 deployments
to Antarctica



Mindy Bell
PolarTREC Teacher
Science teacher
SCINI helper

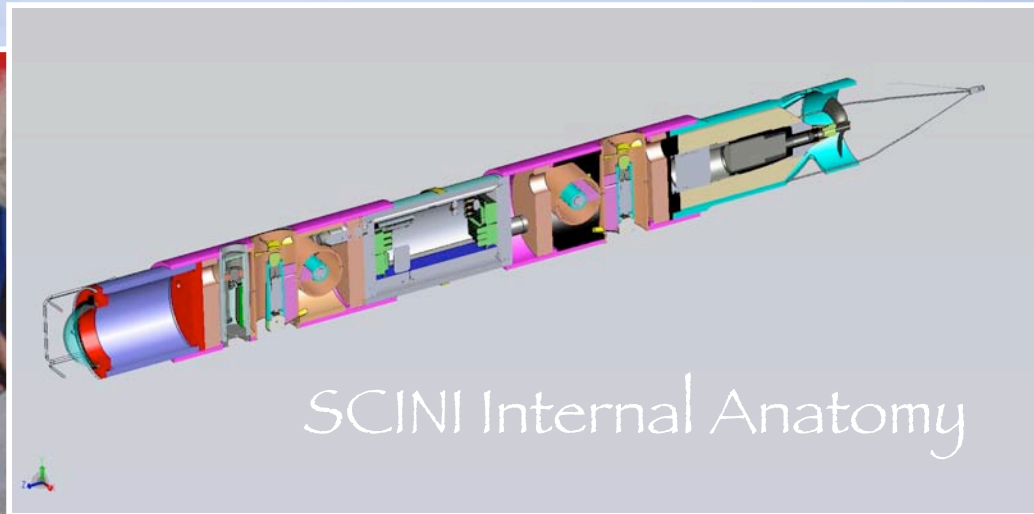
SCINI

Submersible Capable of under Ice Navigation & Imaging



ROV

Remotely Operated Vehicle



SCINI Internal Anatomy



Antarctica

SCINI Goals



??? Questions ???



Last sunset before 24 hours of daylight!

Keep Exploring!



Learn more about Christina, Louise, and Kari:

<http://www.andrill.org/iceberg/>



Learn more about Mindy & Stacy:

www.polartrec.com

<http://scini.mlml.calstate.edu/>

Check out and register for upcoming events!



www.polarrec.com