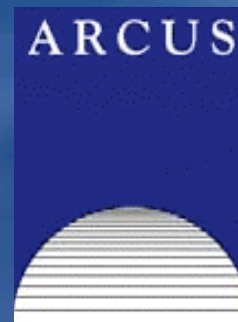


Antarctic Undersea ROV
New Harbor, Antarctica
November 13, 2007





Raise your hand to ask a question

List of all participants

Return to the Lobby or Exit

Slides will be shown here

'Chat' with one person or the entire group

Connecting to server...
You have connected successfully!
You have entered the lobby.
You have entered 'Arctic Research Consortium of the United States (ARCUS)'.
Your media format is Third-party Conference Call.

Name	✓/X	Hand
Helen_Wiggins		

Exit Lobby - Help

ARCUS



What is PolarTREC?

PolarTREC is a professional development experience in which K-12 teachers are paired with researchers in authentic polar research experiences.

In the next three years 36 teachers from around the United States will join scientists in the Arctic and Antarctic in celebration of the International Polar Year!

www.polartrec.com



International Polar Year (IPY) 2007-2009

The International Polar Year (2007-2009) is an exciting scientific campaign focusing on the world's polar regions!

IPY is a time for discovery, science, learning, and awareness about the polar regions with activities for youth, scientists, and the public.

www.ipy.org

An underwater photograph showing a diver in the center, illuminated by a bright light source. The water is dark blue, and there are some rocky structures visible in the lower left. The overall scene is dimly lit, with the primary light source creating a strong glow around the diver and casting long shadows.

Science Under Ice

Project SCINI in Antarctica

Overview of Presentation

- Introductions
- Dry Valleys, Antarctica
- Life at New Harbor
- Science at New Harbor
 - Tools: Diving, SCINI, VideoRay
 - Science: Stacy's Ecological Research and the "Lost Experiments" refound!
- Questions?

Team SCINI at New Harbor





Stacy Kim

Benthic ecologist

Moss Landing Marine Labs, CA

11 deployments to Antarctica

Bob Zook

Chief Gizmologist

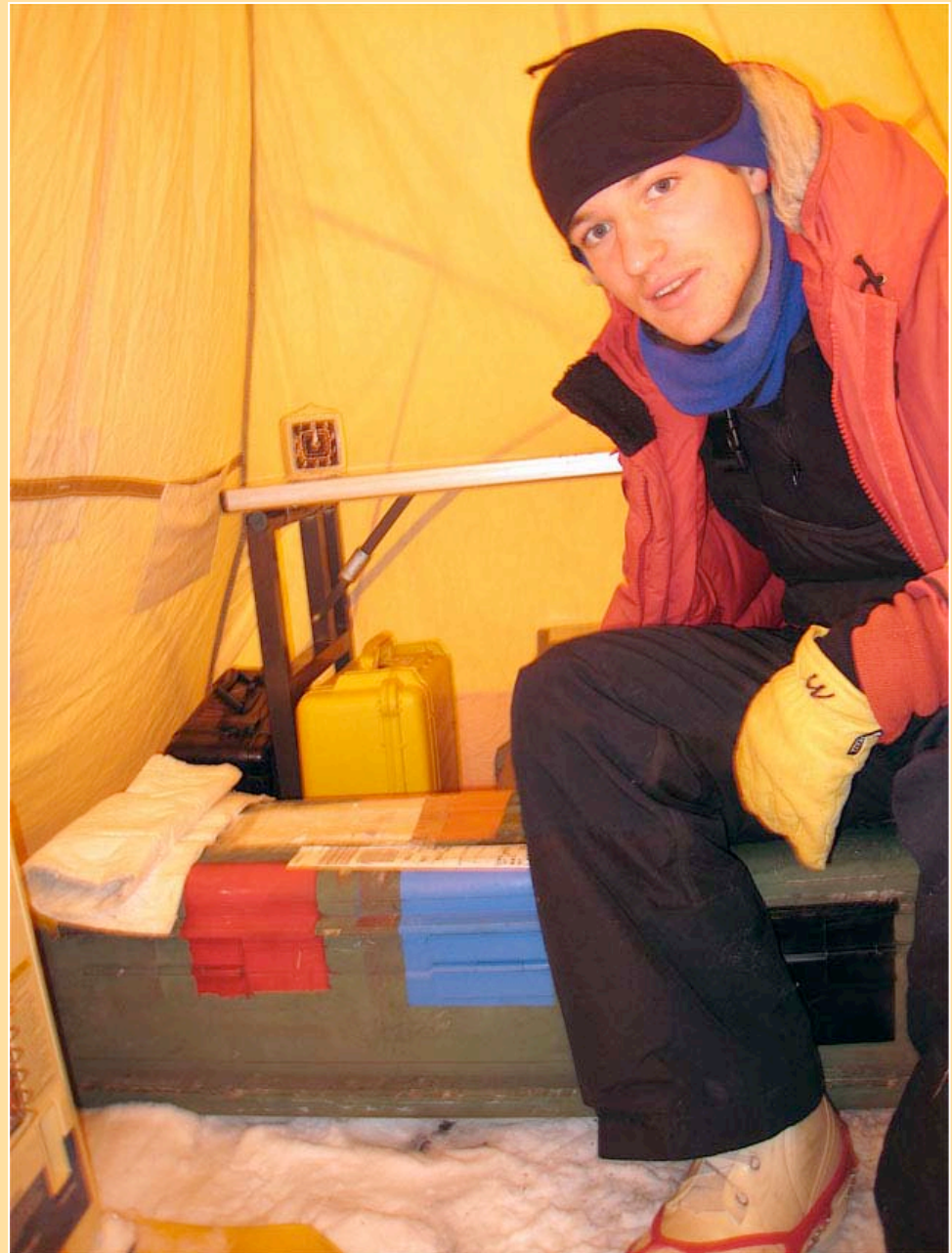
Engineer

Diver

14 seasons in Antarctica



Bryan Newbold
MIT Undergrad
Physics major
Software engineer
Joystick master



Nicholas Huerta
CSU Monterey Bay
undergrad
Machinist
Diver



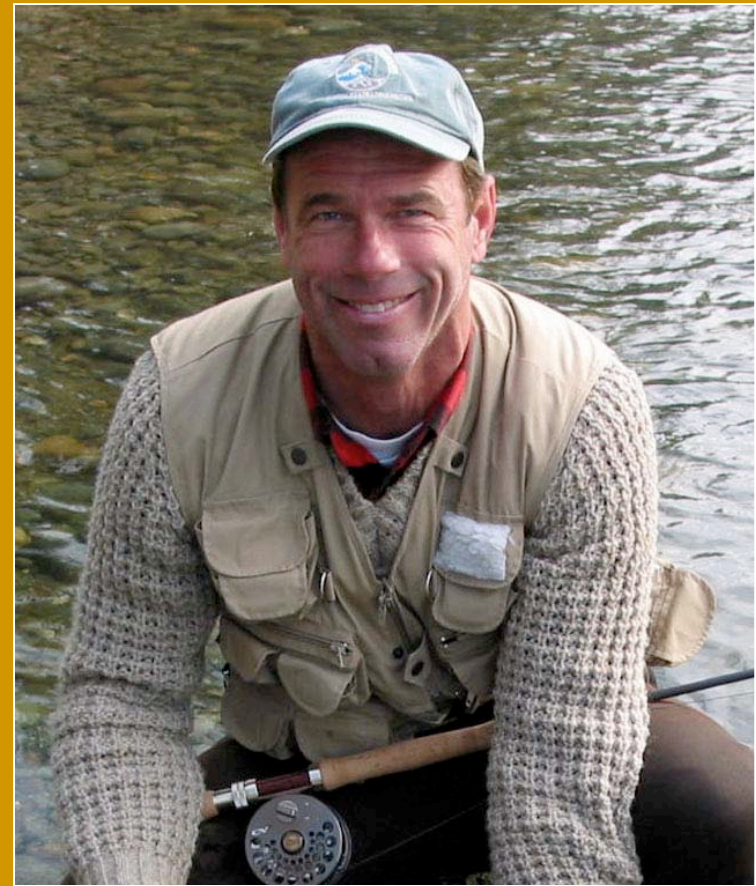


Marcus Kolb
VideoRay owner,
designer, engineer
Diver
SuperDad

Mindy Bell
PolarTREC Teacher
Science teacher
SCINI helper



B Lee Williams
Submersible Pilot
Adopted Canadian



Rusty Fairey
Marine chemist
Moss Landing
Marine labs

Dry Valleys, Antarctica





SCINI Goals



Research questions

- What lives here, especially in deeper waters?
New species are still being discovered!
- How do humans impact this environment?
- How do communities change over time - with and without human impacts?

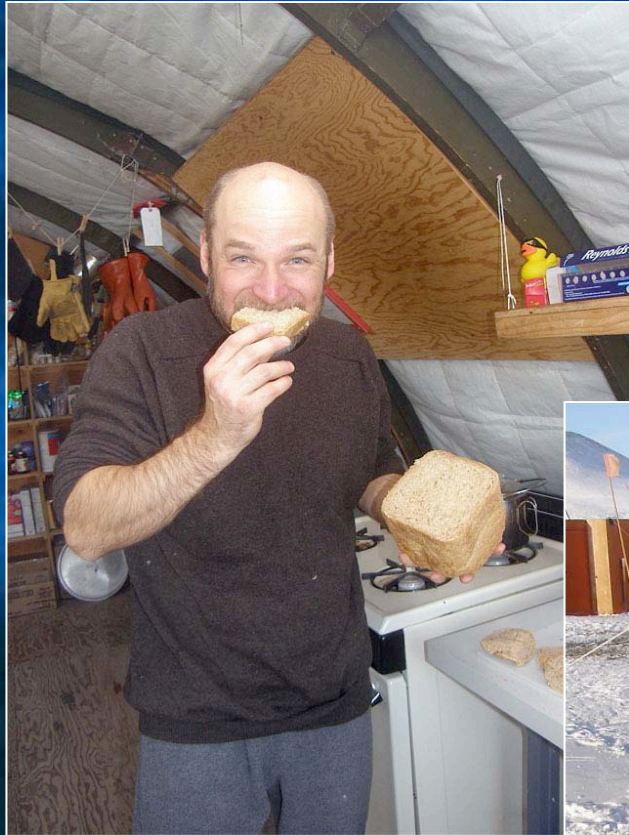
Life at New Harbor



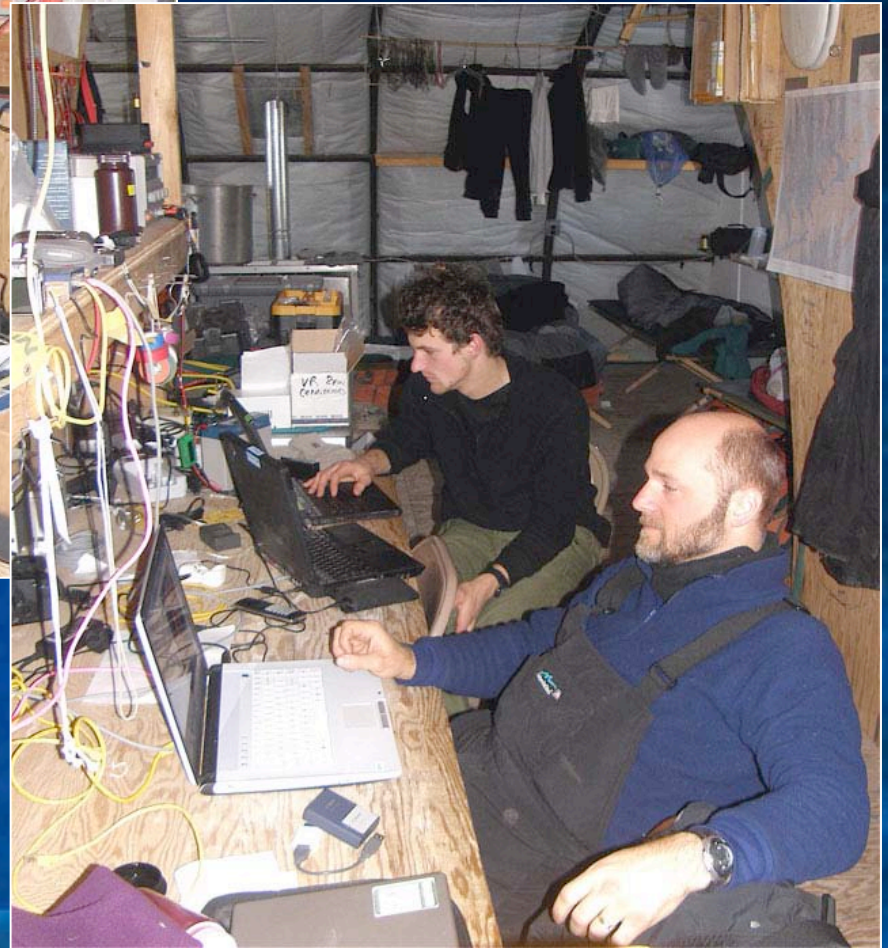
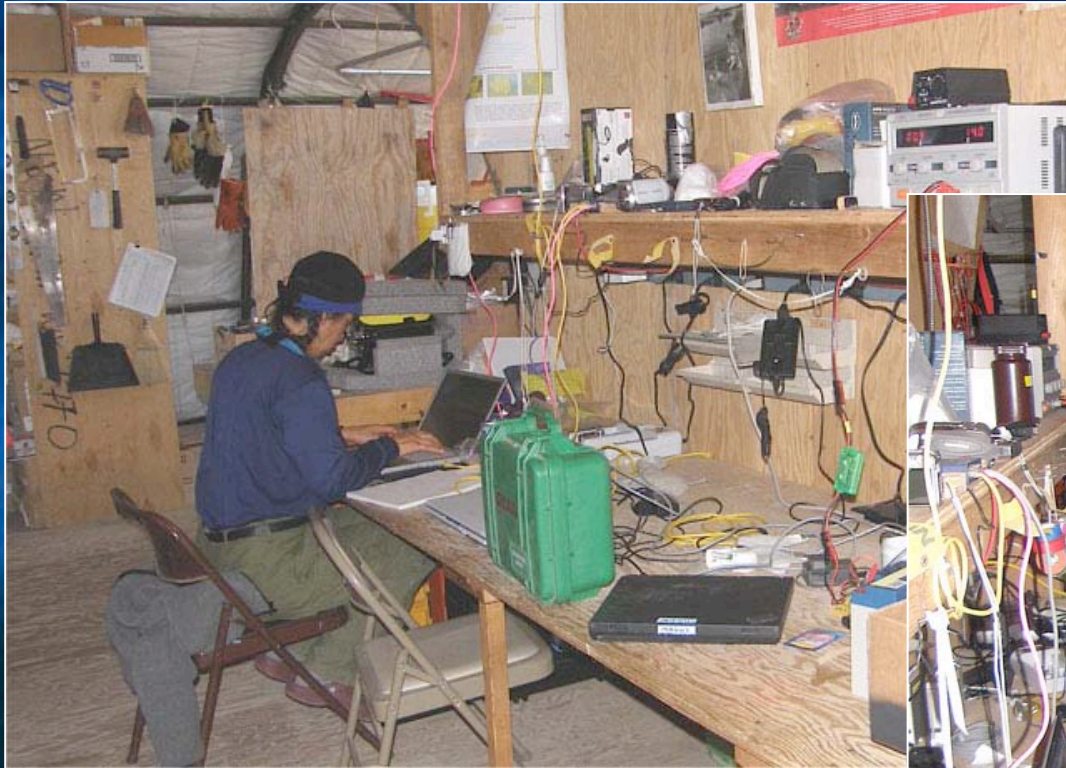
Sleeping



Cooking and Dishes



Workbench



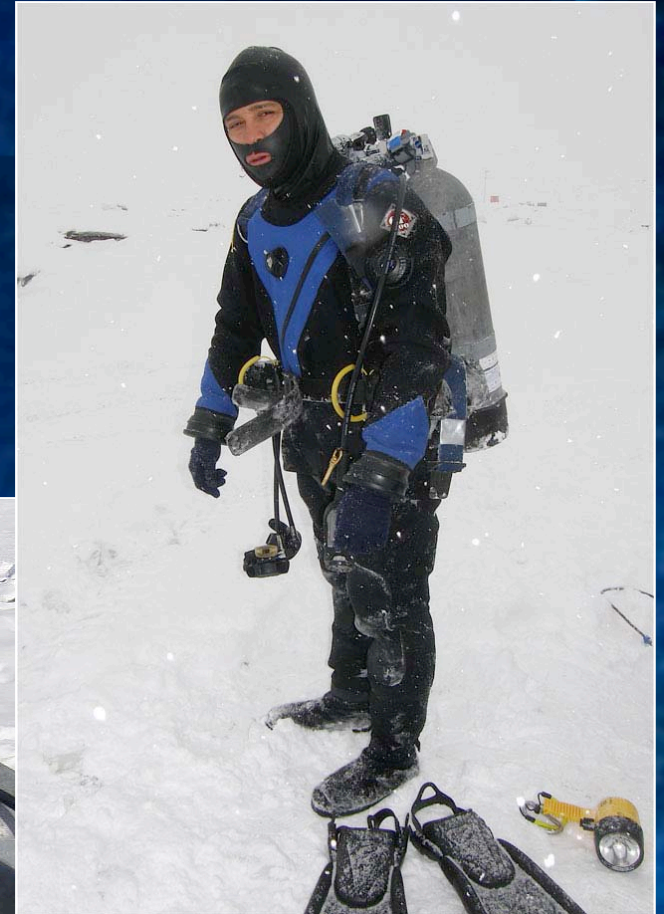
Lab and Outhouse



Making Holes



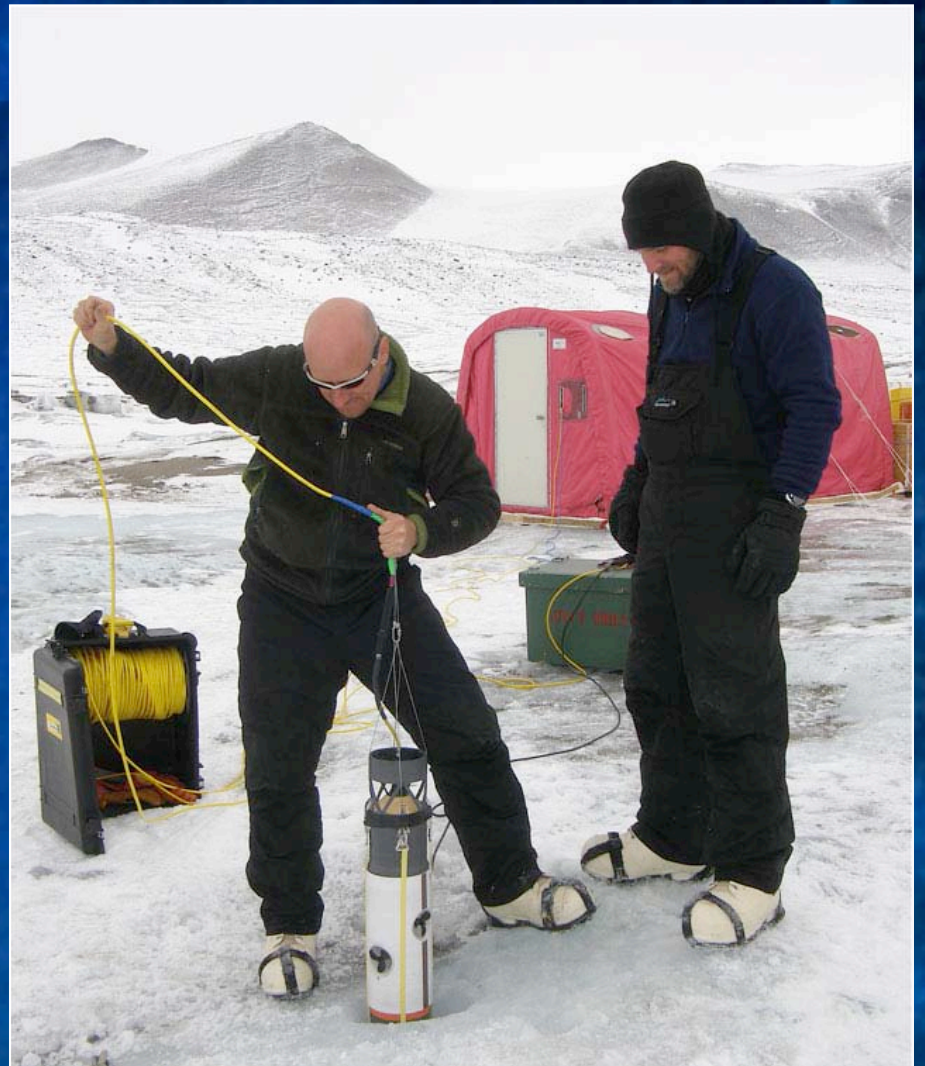
Diving



VideoRay



SCINI



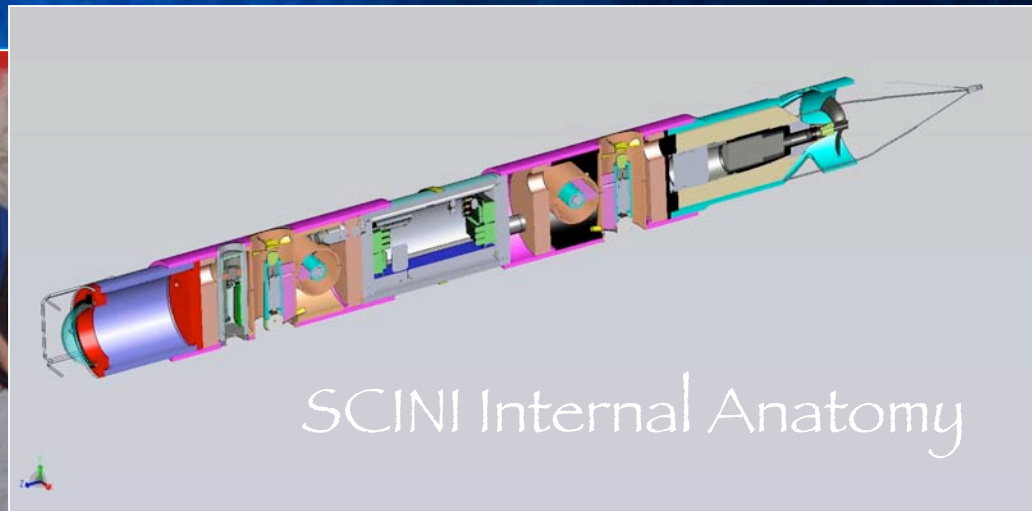
SCINI

Submersible Capable of under Ice Navigation & Imaging



ROV

Remotely Operated Vehicle

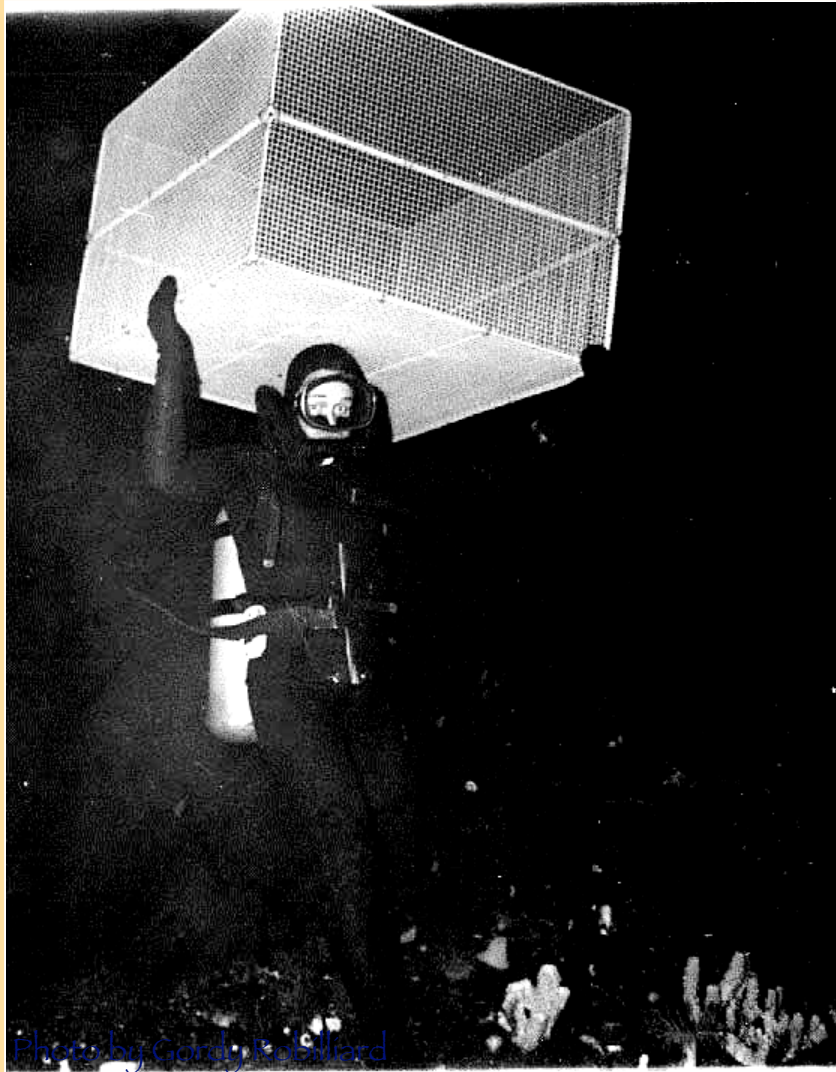


SCINI Internal Anatomy



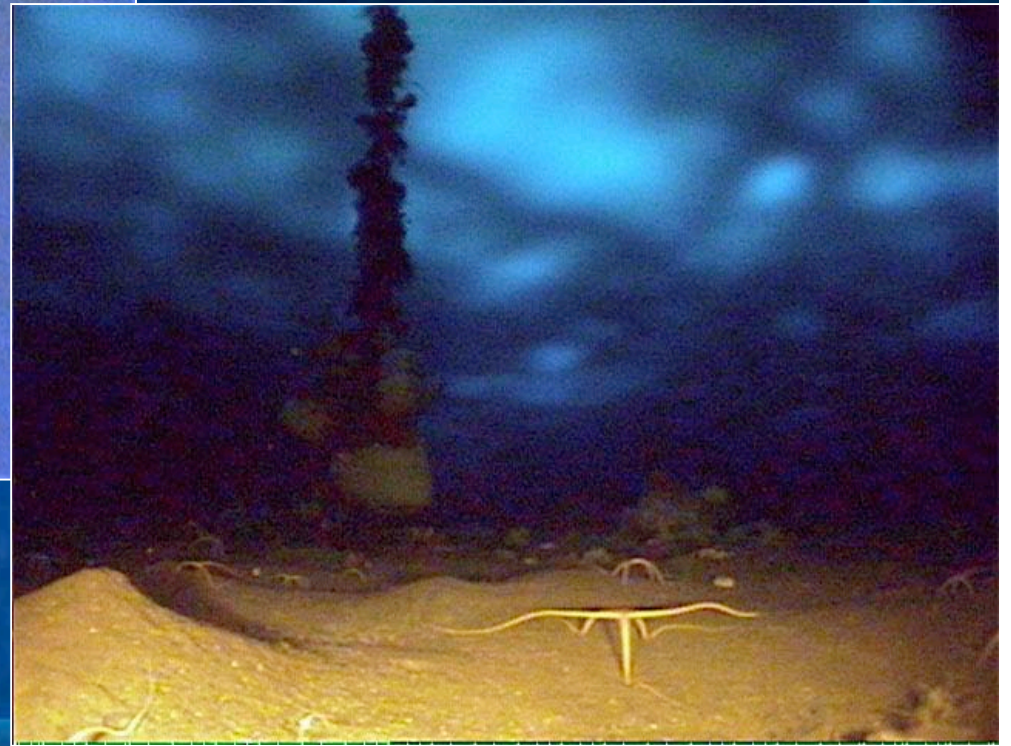
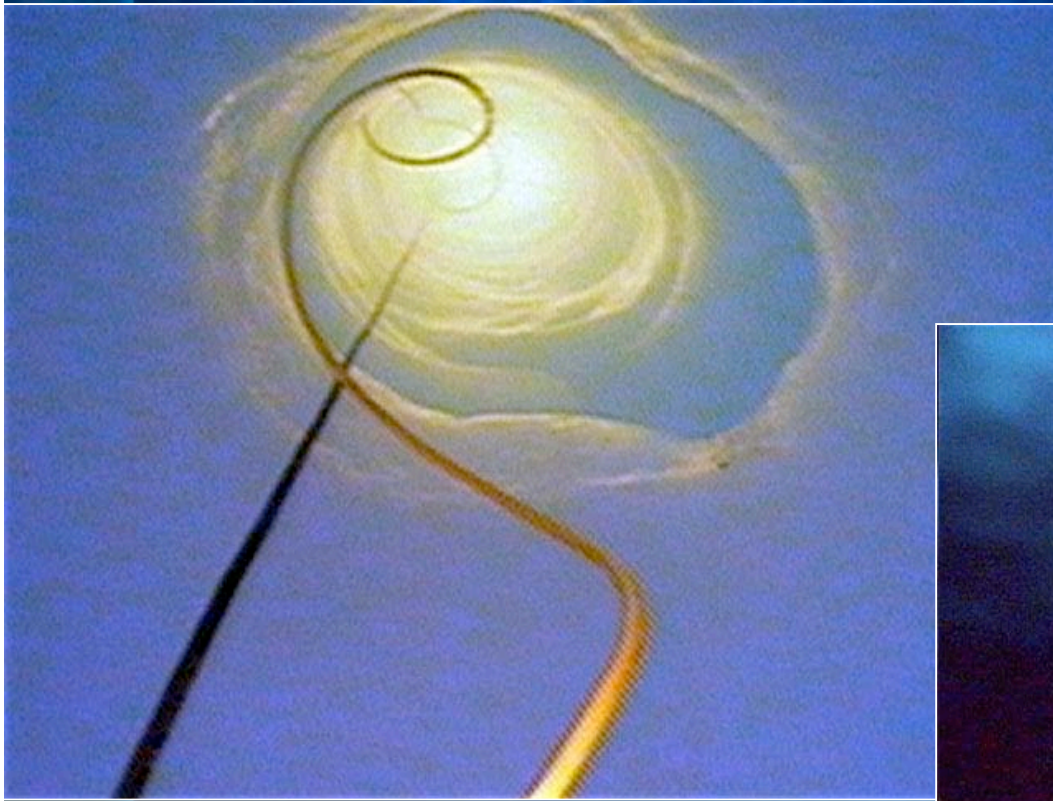
Antarctica

The Lost Experiments

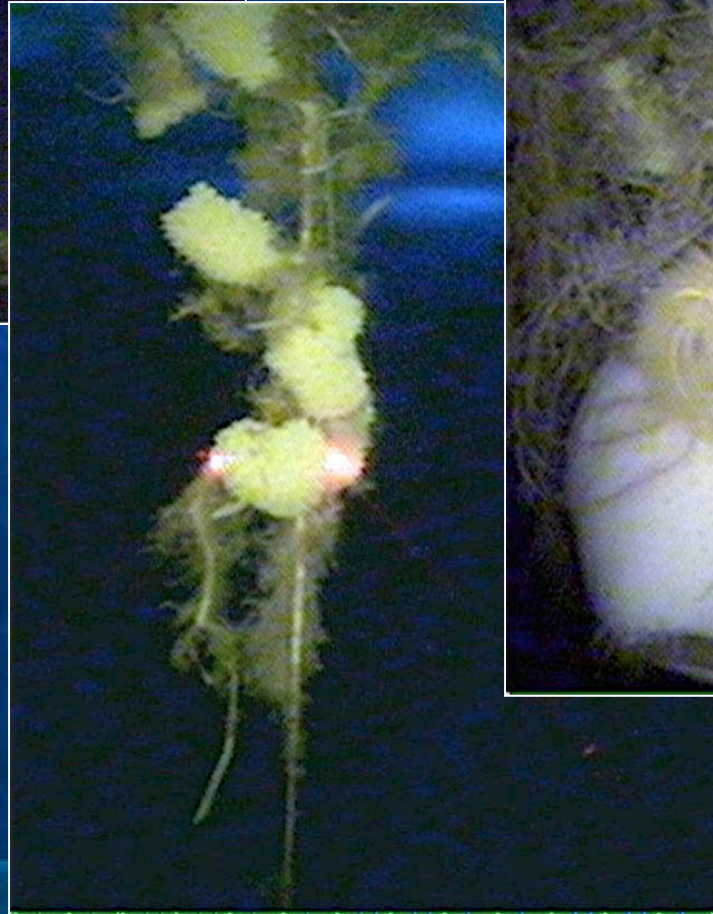
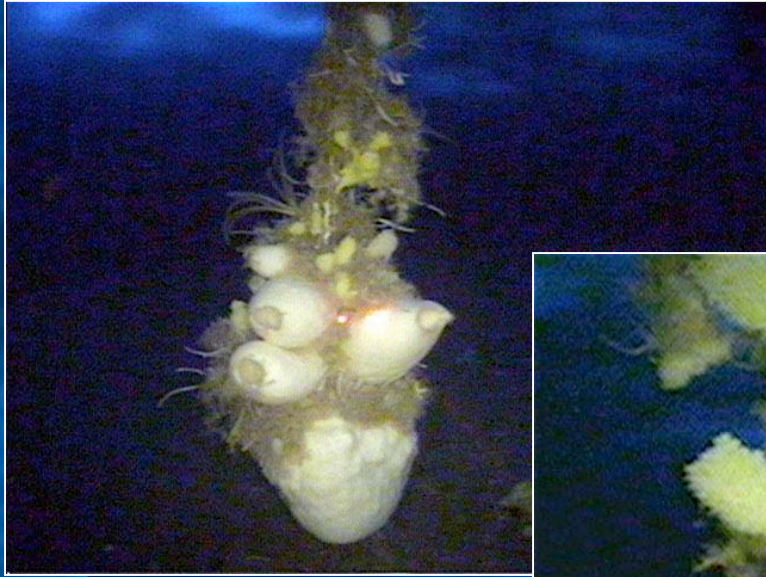


- Begun in the early 1960s by Dr. Paul Dayton from Scripps.
- Experiments located at depths up to 60 m.
- Experiments were not completed because diving safety limits of 40 m were later established.

An ROV's View



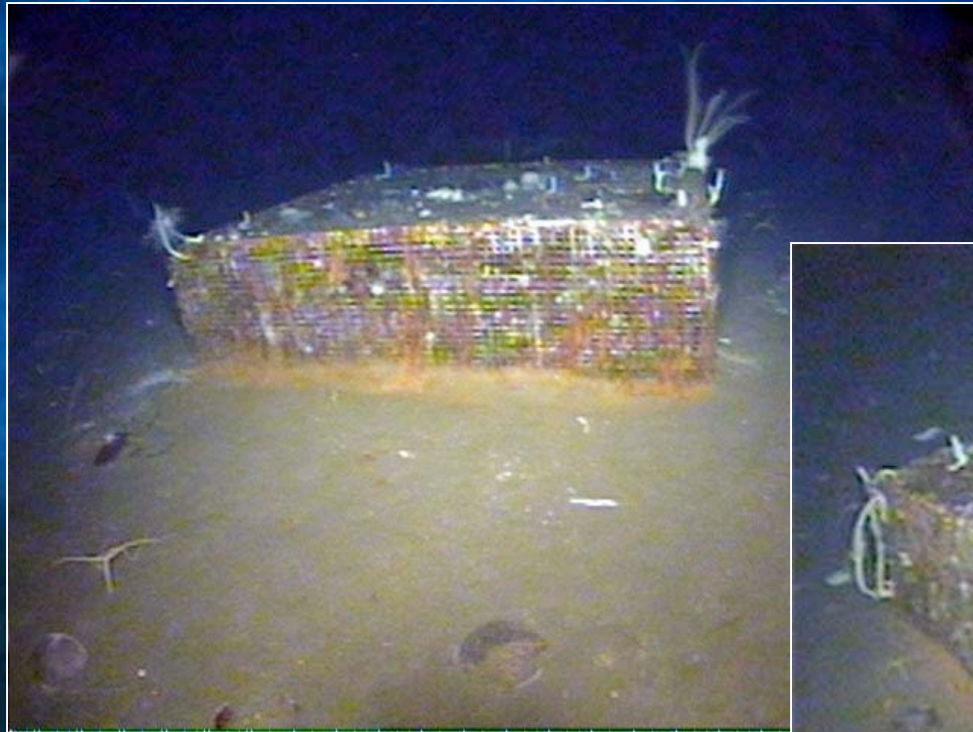
Floating Structures up...



and down...

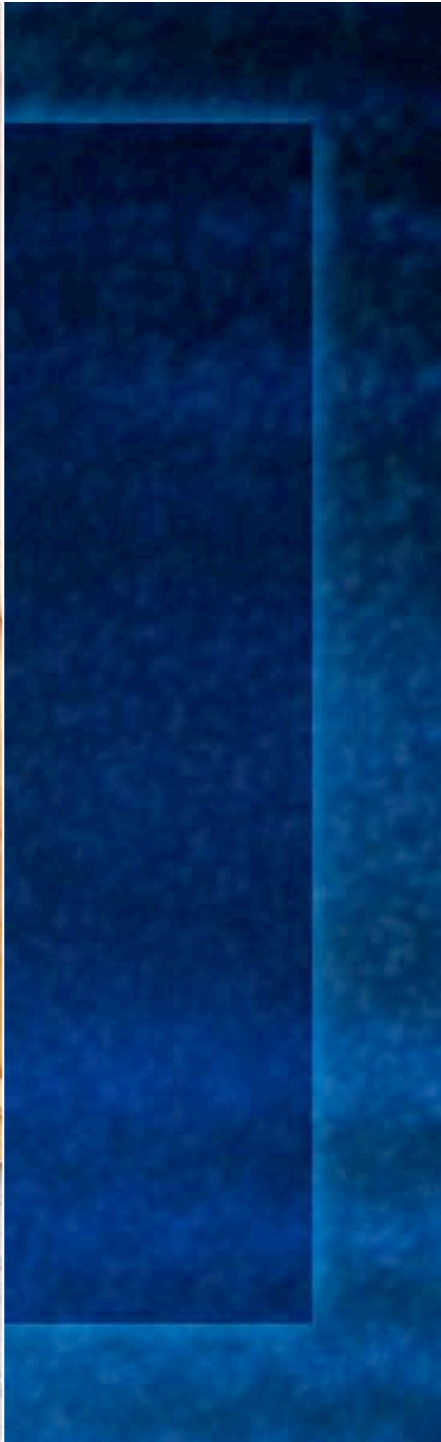


Exclusion Cages closed...



and open...





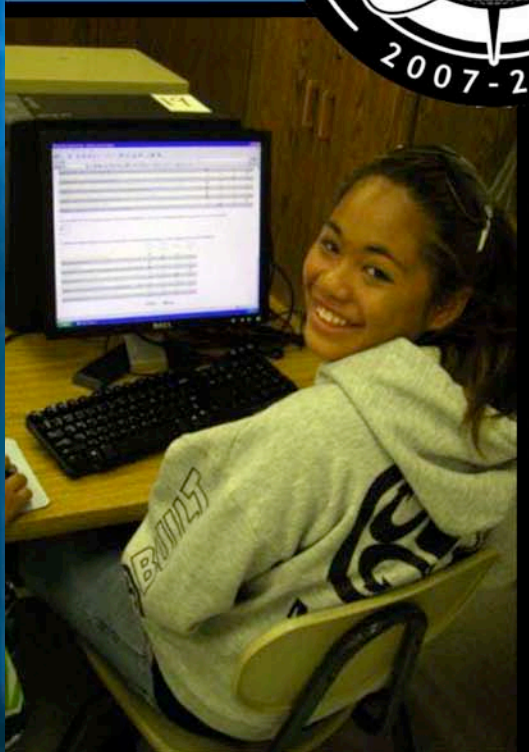
Questions?



Check out and register for upcoming events!



Live from IPY!



*Thank
You!*



*If you have further questions,
please contact us at
info@polartrec.com or call
1-907-474-1600*

