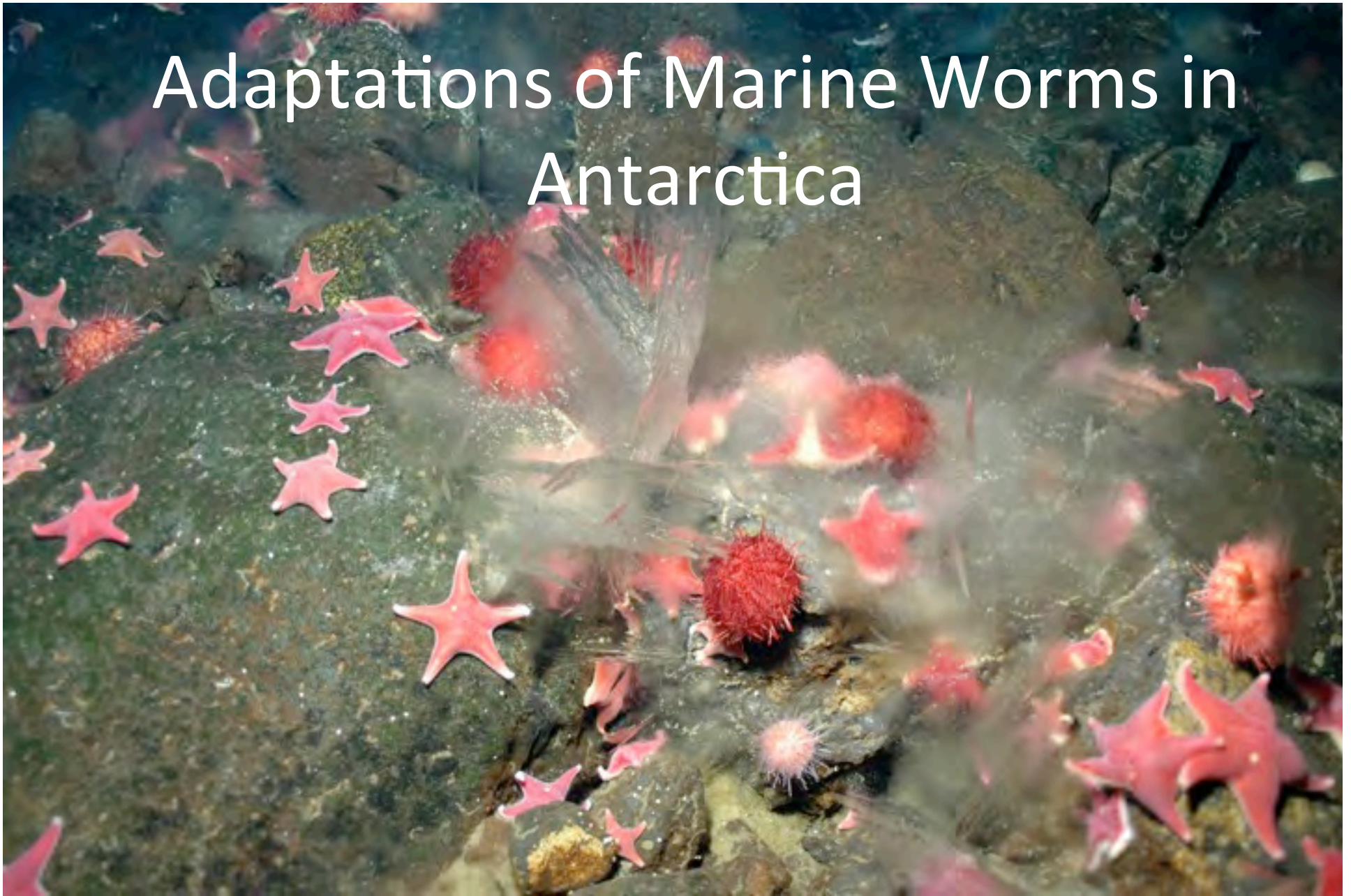


# Adaptations of Marine Worms in Antarctica



McMurdo Station, Antarctica

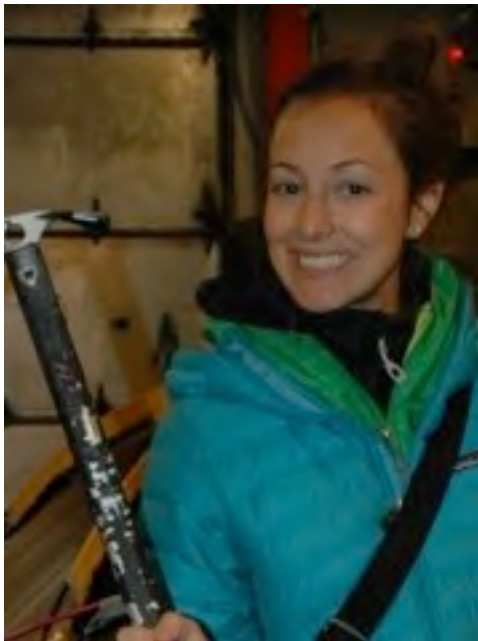
# Who are you talking with?



Dr. Adam Marsh



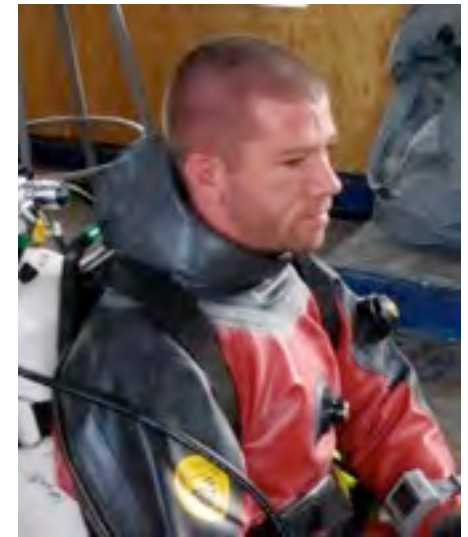
Dr. Stacy Kim



Stephanie Guida



Annamarie Pasqualone



Mike League



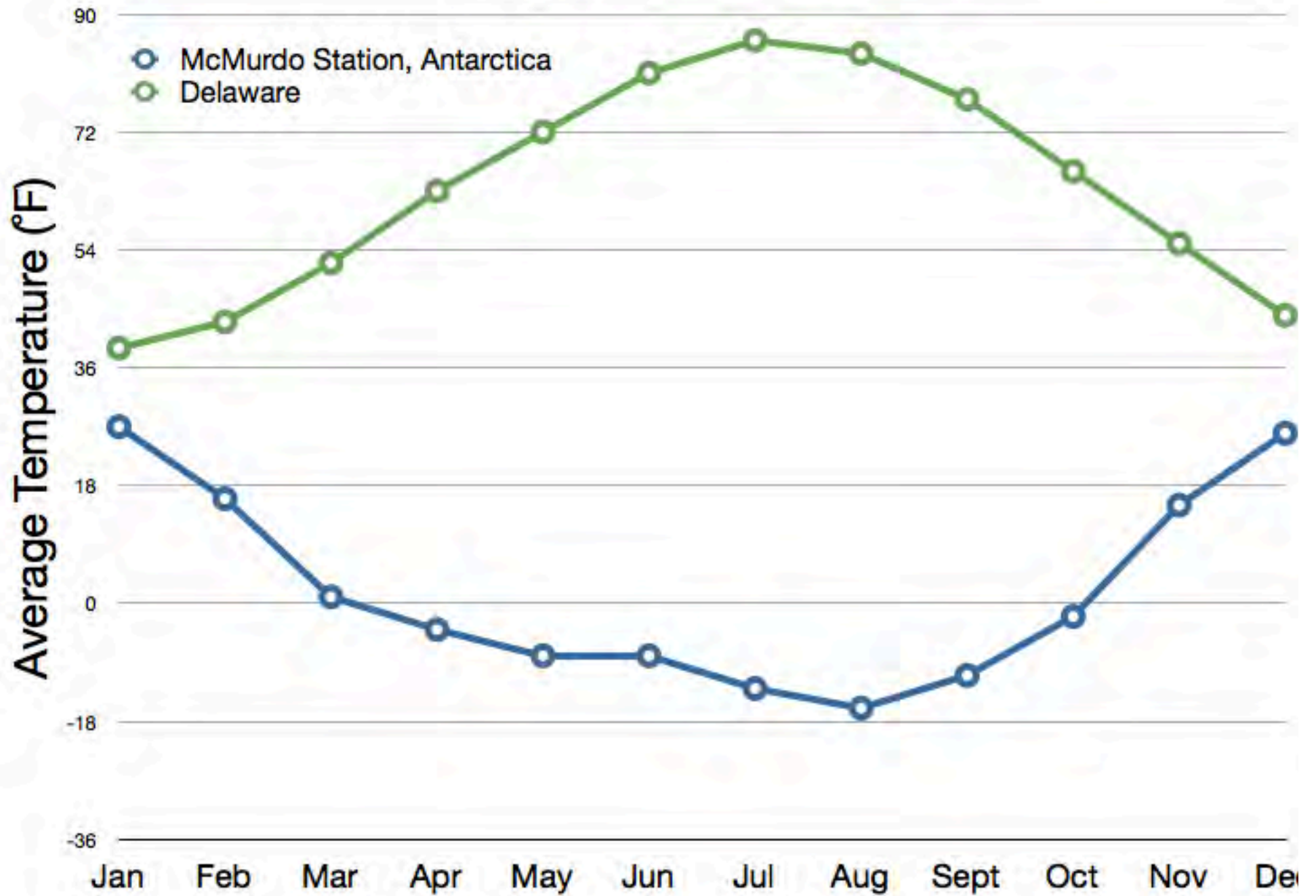
# Where are we?







## Average Temperature by Month







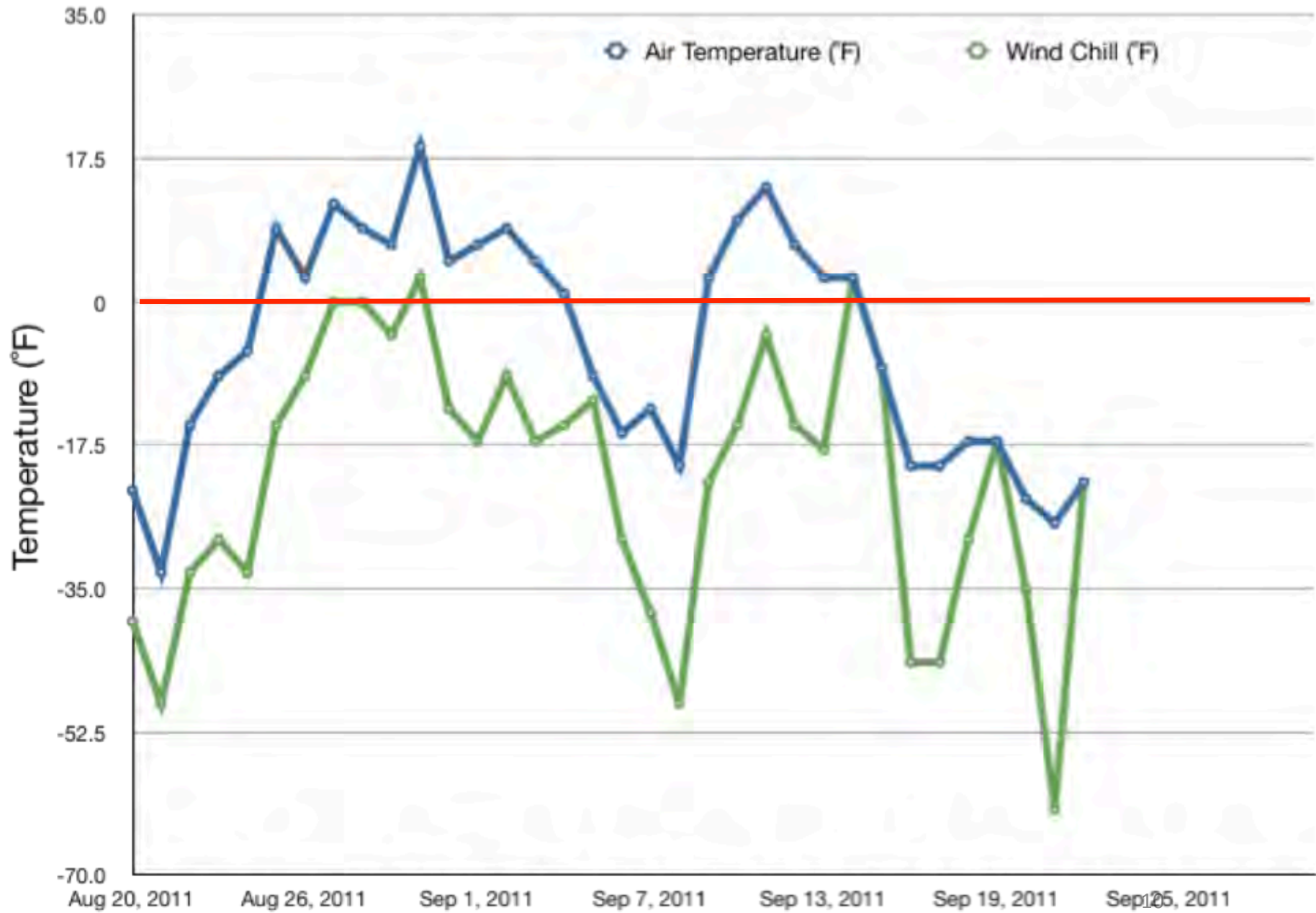








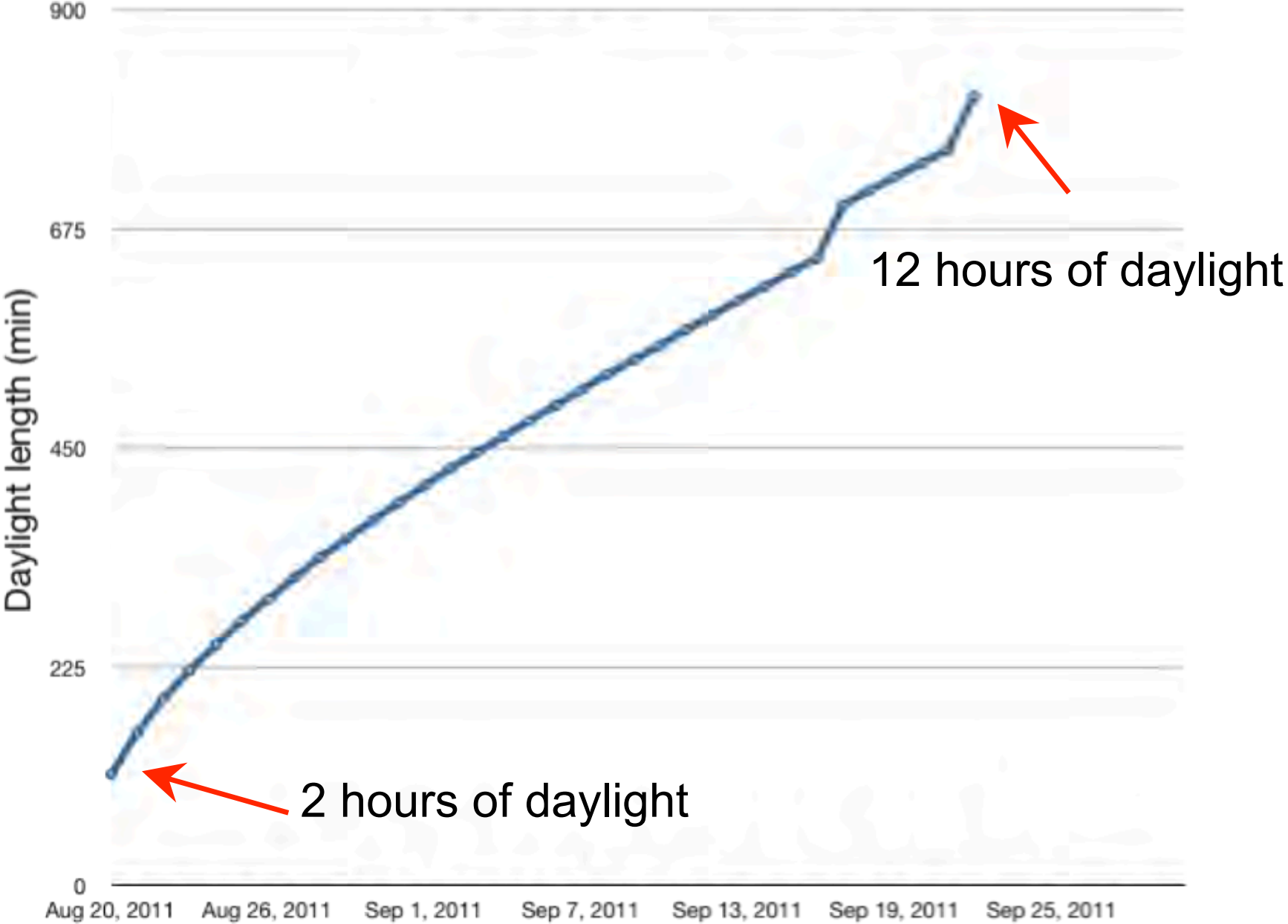
## Air Temperature and Wind Chill versus Time







# Daylight Length (min) versus time





# What are we doing in Antarctica?

We are studying marine worms that live in the sediment underwater around McMurdo Station. So far we have been:

Drilling holes in sea ice

SCUBA diving under ice

Collecting sediment

Sorting worms (*Capitella*) from sediment

Taking underwater photo and video



































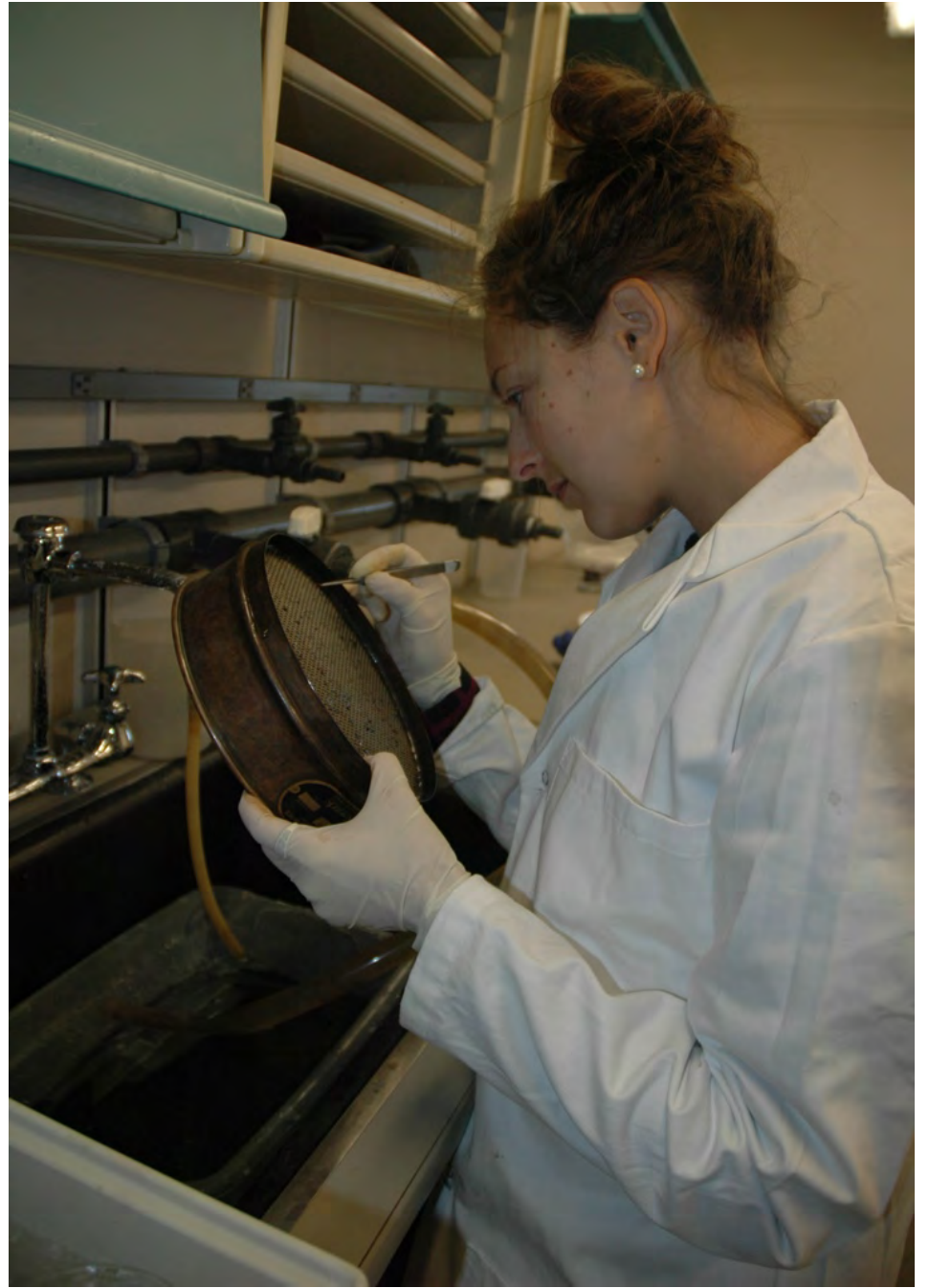


















# What do we mean by “Adaptation”?

- a body structure (including DNA)
- a behavior
- a special skill or process
  
- all allow an organism to succeed in its environment
  
- How is an organism successful? What does that mean?











The sea urchins in this photo are as big as your hand.  
How big do you think this Antarctic sea star is?





























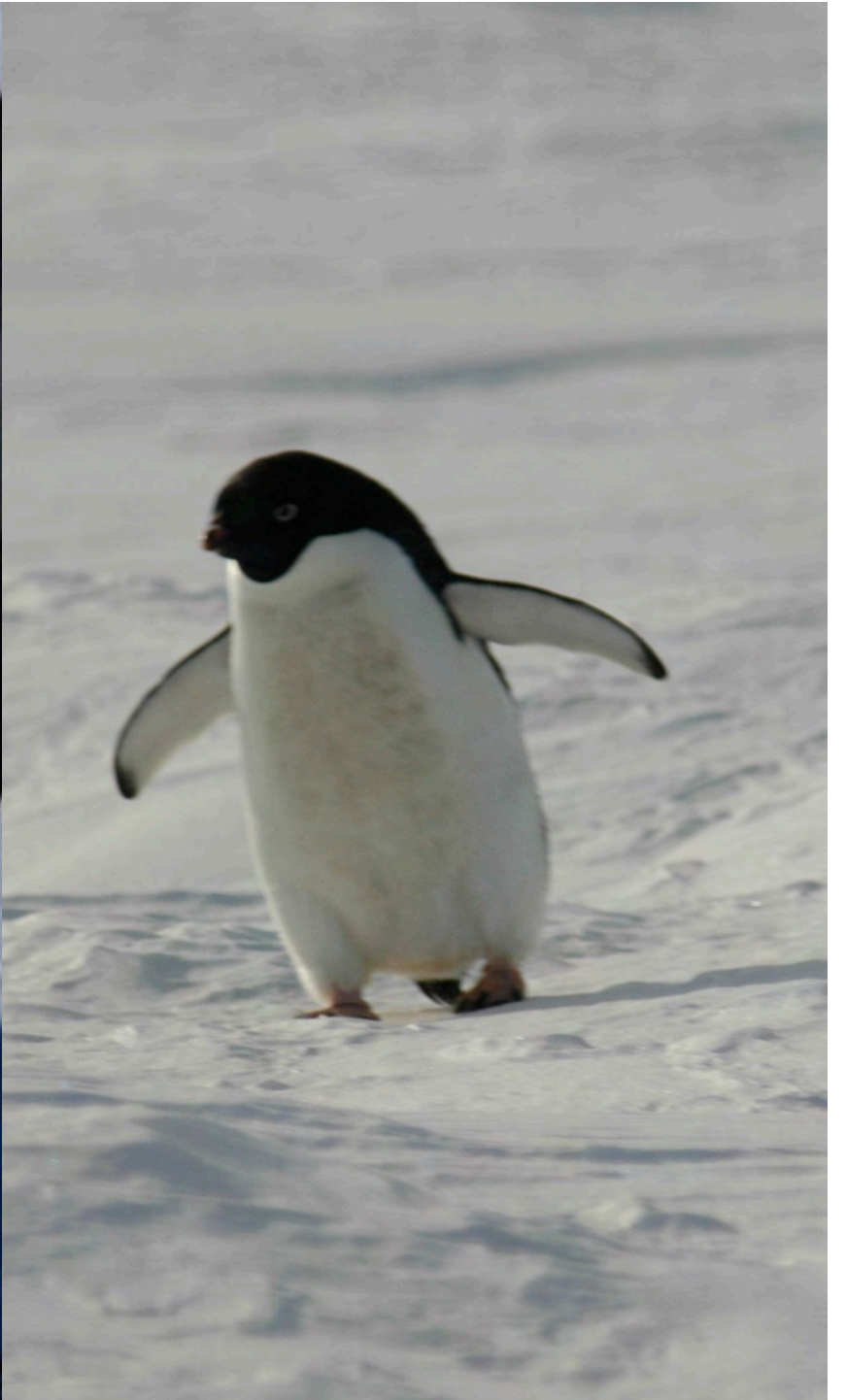
















# Questions?

















