



# Welcome to a Polar Week Live Event!

Connecting to the Poles!

with Researchers

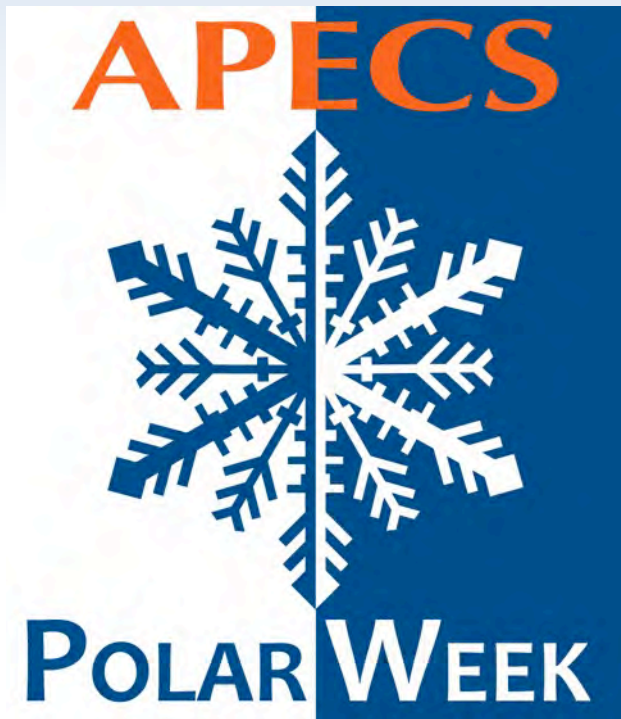
Meagan Grabowski and Piotr Angiel

**20 March 2012**

10am Alaska Daylight Time [11am PDT, 12pm MDT, 1pm CDT, 2pm EDT]



# What is Polar Week?



March 18-24th, 2012

Coincides with the spring equinox, one of two times a year when everyone on the planet gets 12 hours of sunlight.

Celebrate Arctic and Antarctic science on a global scale!

Join in the fun of science and learn more about all the activities at:

<http://apecs.is/education-outreach/polarweekmarch2012>

# Blackboard collaborate

Slides will be shown here

Exit the presentation

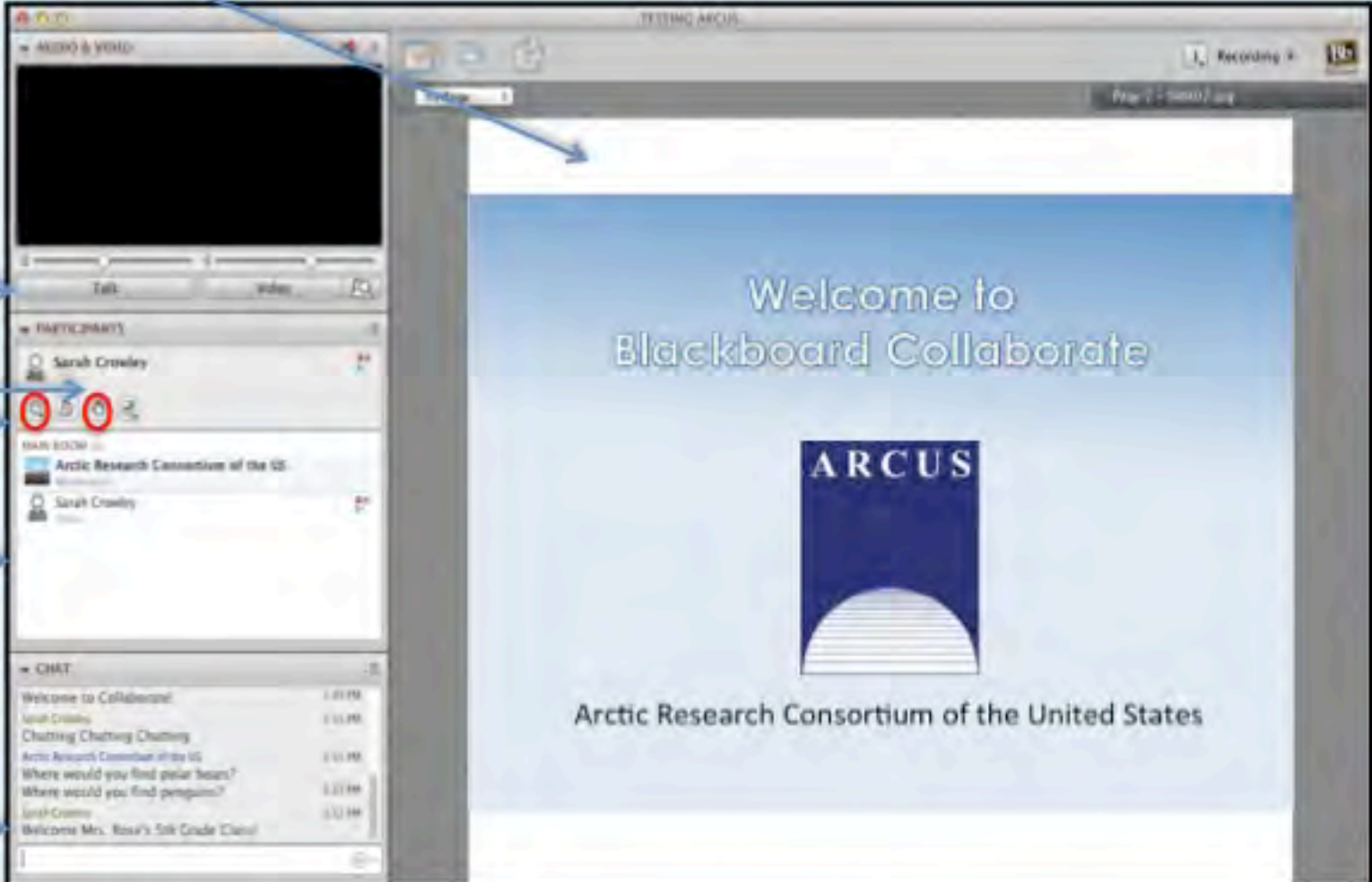
**Click** to Talk,  
**Unclick** to finish talking

Raise your hand to ask a question

Share with emoticons

List of all participants

Chat with one person or the entire group



The screenshot shows the Blackboard Collaborate interface. The main area displays a presentation slide titled "Welcome to Blackboard Collaborate" with the ARCUS logo and the text "Arctic Research Consortium of the United States". The left sidebar contains several panels: a "TALK" panel with a microphone icon, a "PARTICIPANTS" panel listing "Sarah Crowley" with a hand icon, a "CHAT ROOM" panel with a list of messages, and a "CHAT" panel with a list of messages. Arrows point from the text labels on the left to the corresponding UI elements in the screenshot.

## Please Note:

- Participants using the telephone can mute/unmute by **pressing \*6** on the phone.
- Today's event will be recorded and archived.



# Questions

During the Presentation:

- Type your question in the text chat box

At the End of the Presentation:

- Raise your hand with the “hand button”.
- PolarTREC staff will call on you.
- Speak loud and clear and directly into the phone to ask your question.

**Click on the Talk button to speak.**

**Unclick when you are done.**



# Participant Introductions

**When called, please state your:**

- ✓ Name
- ✓ School / Institution
- ✓ The number of students and adults participating with you in the same location



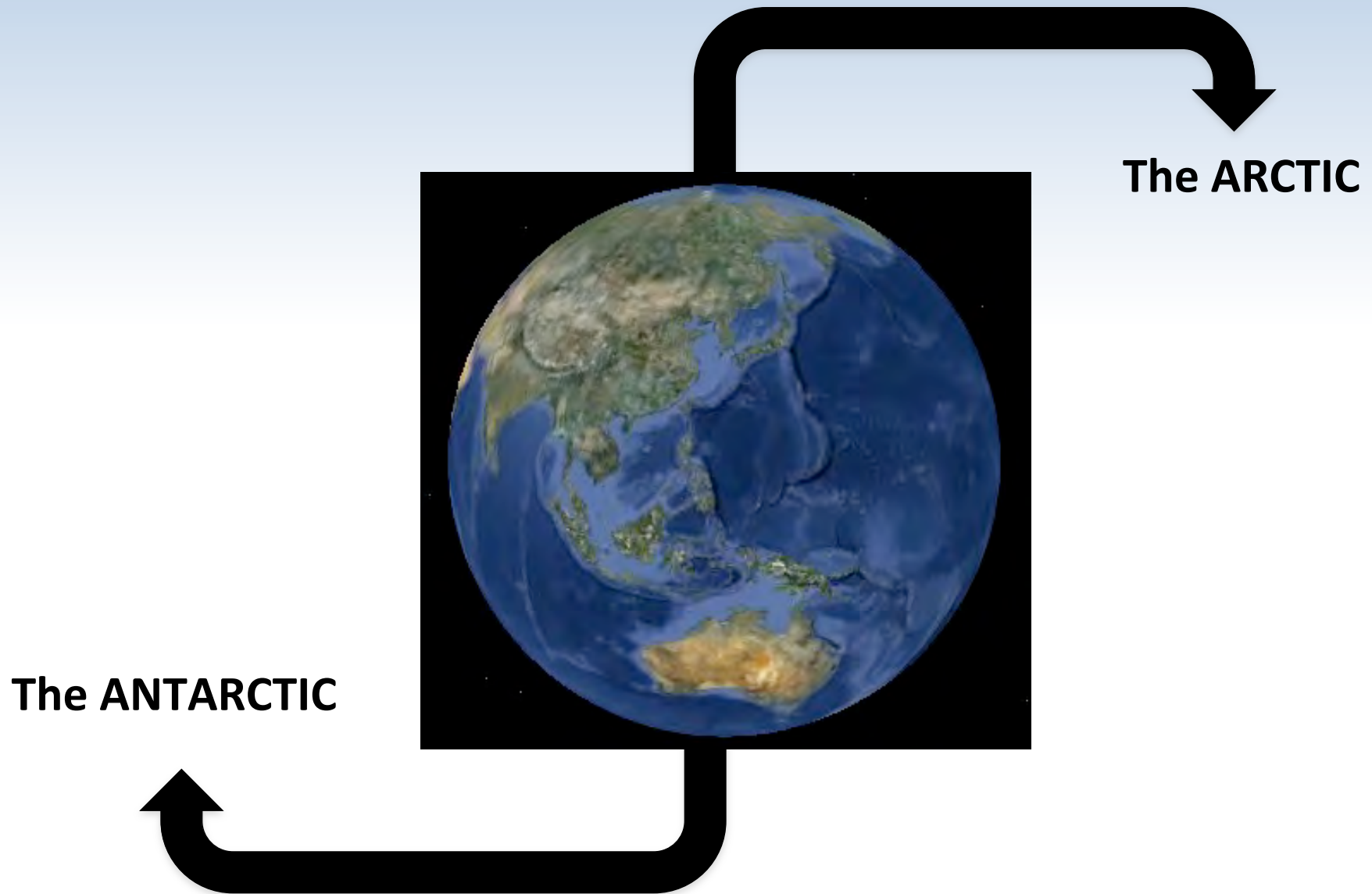
## Connecting to the Poles with...



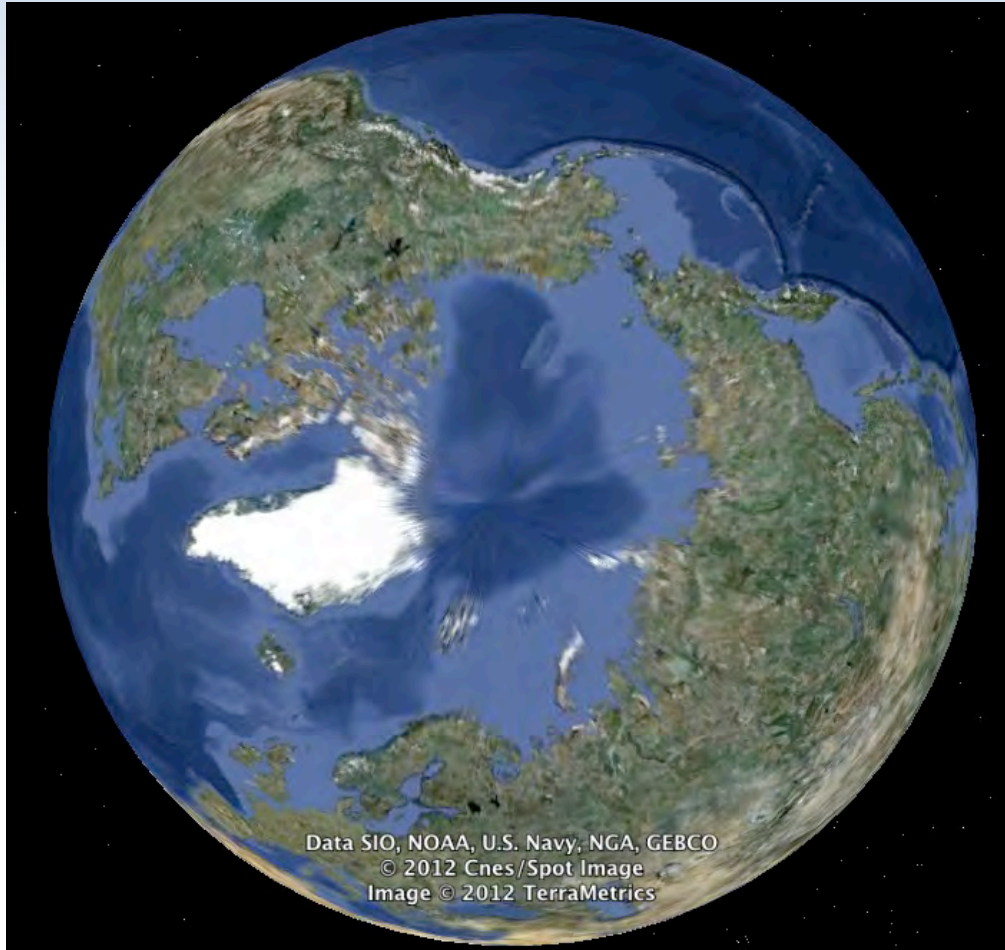
**Meagan Grabowski**



**Piotr Angiel**



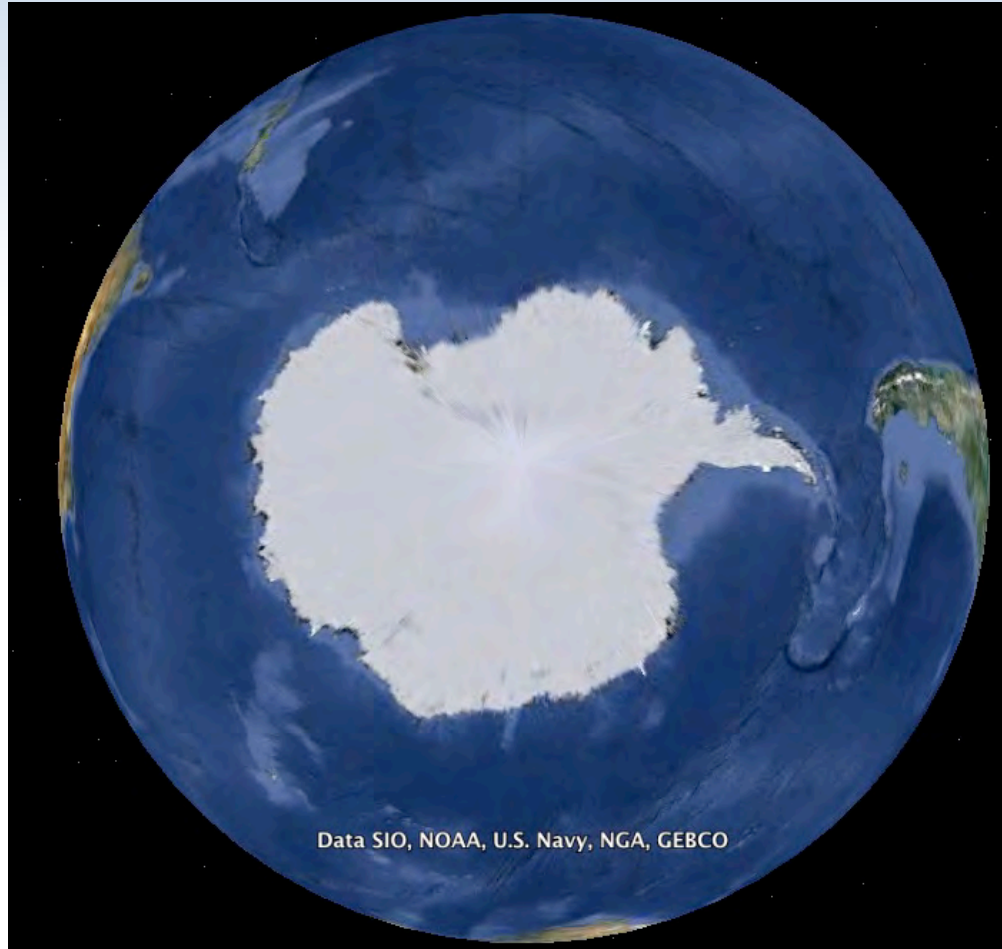
# The ARCTIC



- ocean surround by land
- many countries involved
- free of ice seasonally



# The ANTARCTIC



-land surrounded by ocean

- protected by Antarctic Treaty

- covered in ice most of year

## Connecting to the Poles with....



### **Meagan Grabowski**

From: the Yukon Territory in northwest Canada.

Interests: skiing, hunting and research.

I hope to learn more about sustainable livelihoods in northern communities and inspire fellow youth to pursue field research opportunities.



# My Experiences as a Field Assistant

Meagan Grabowski

APECS Polar Week 2012

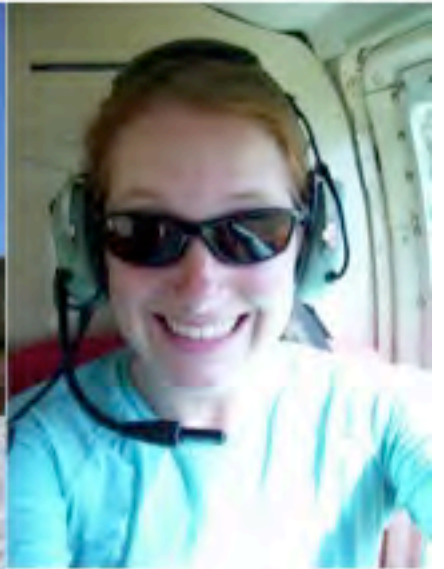


# Yukon Territory





# Pika Camp





# Hudson Bay Mountain

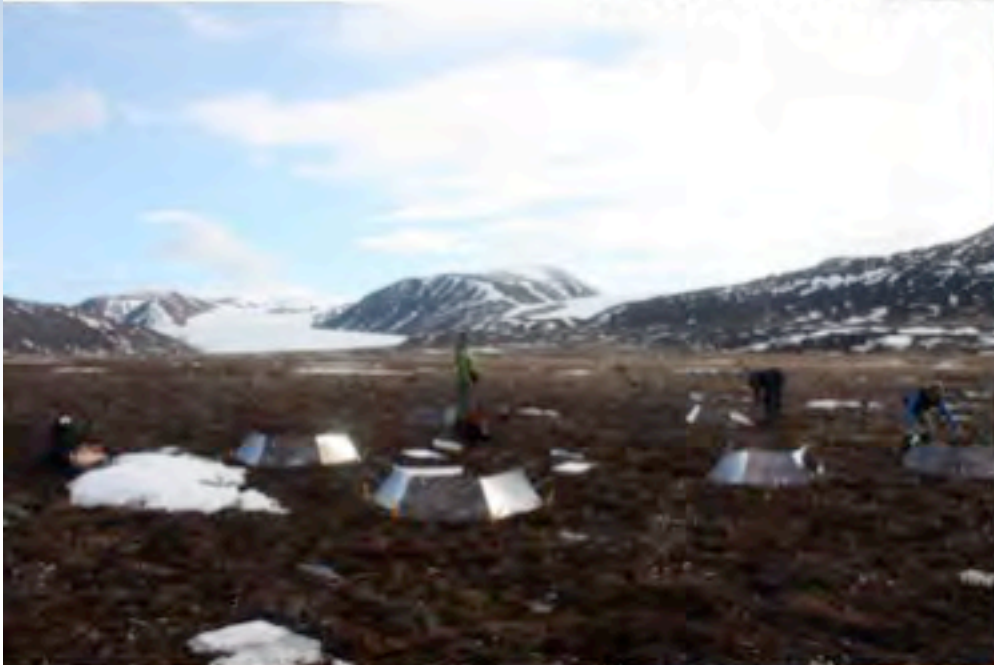


# Svalbard





# Alexandra Fiord



# What's next?



University  
of Victoria



**UAF**  
UNIVERSITY OF ALASKA  
FAIRBANKS



22-27 April 2012, Montréal, Canada  
*From Knowledge to Action*



## Connecting to the Poles with....



### **Piotr Angiel**

I am from Poland

I am a PhD Candidate at University of Western Ontario, Canada

I am a Geographer and Geologist.

Research: I was involved in several projects in Maritime Antarctica where I spent 2 years (including overwinter!).

My research focuses on glaciers retreat due to climate warming and its influence on ecosystems.



## Glaciers on Iceland







Two years  
on King George Island  
(West Antarctic)





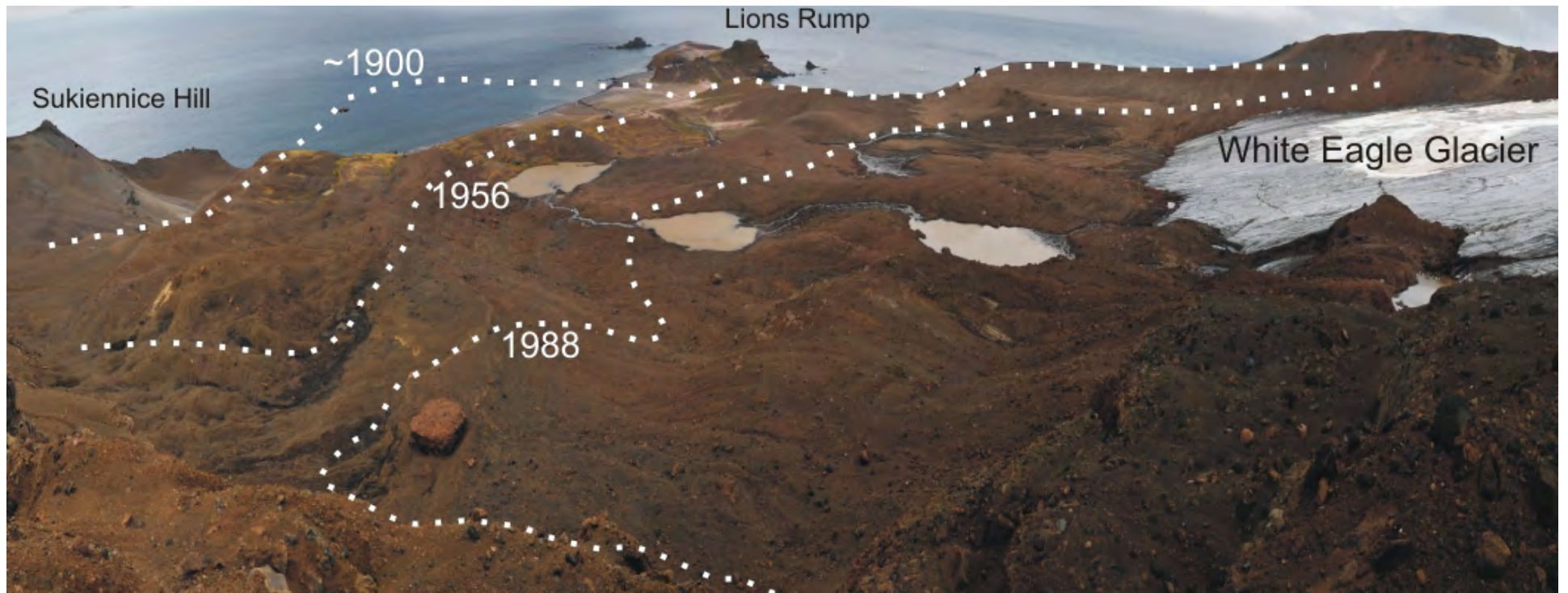
Windy Glacier  
King George Island







Glaciers retreat  
and plants colonize





Antarctic Krill



Climate change influence  
on krill and penguin  
populations



Gentoo Penguin



piotr@angiel.pl





# Questions

During the Presentation:

- Type your question in the text chat box

At the End of the Presentation:

- Raise your hand with the “hand button”.
- PolarTREC staff will call on you.
- Speak loud and clear and directly into the phone to ask your question.

**Click on the Talk button to speak.**

**Unclick when you are done.**



# Thank You!

*An archive of the event will be available shortly.*  
<http://www.polartrec.com/polar-connect/archive>

