



Welcome to a Polar Week Live Event!

Connecting to the Poles!

with Researchers

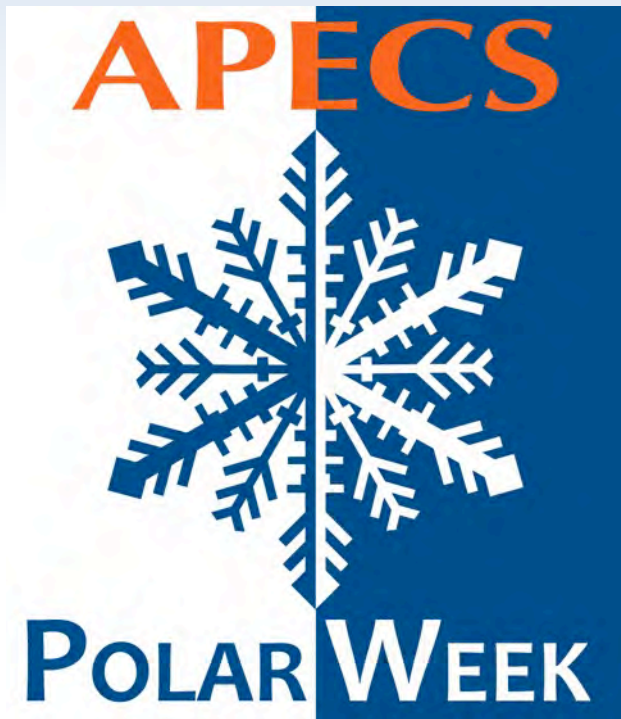
Jennifer Provencher and Piotr Angiel

22 March 2012

5am Alaska Daylight Time [6am PDT, 7am MDT, 8am CDT, 9am EDT]



What is Polar Week?



March 18-24th, 2012

Coincides with the spring equinox, one of two times a year when everyone on the planet gets 12 hours of sunlight.

Celebrate Arctic and Antarctic science on a global scale!

Join in the fun of science and learn more about all the activities at:

<http://apecs.is/education-outreach/polarweekmarch2012>

Blackboard collaborate

Slides will be shown here

Exit the presentation

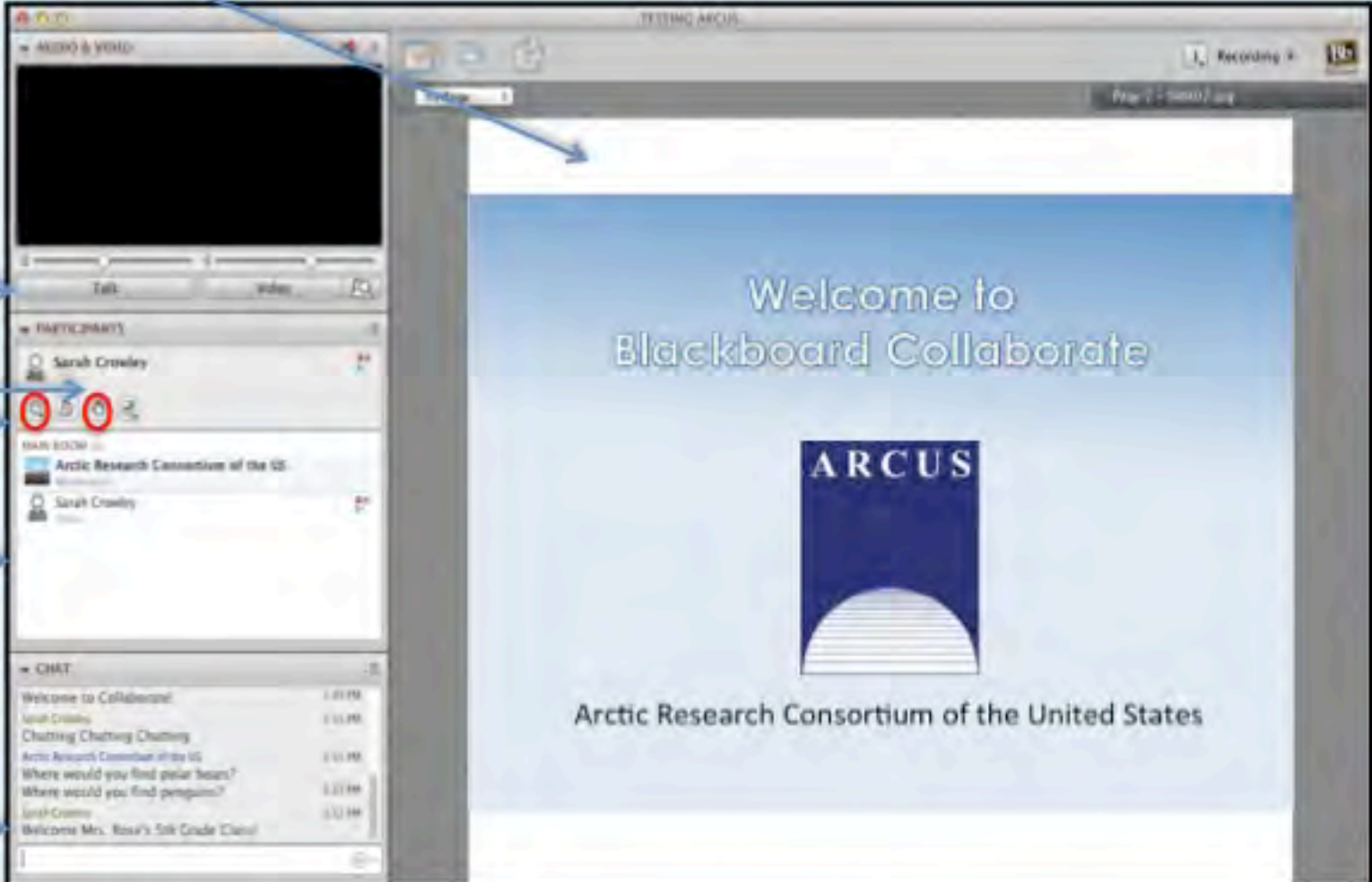
Click to Talk,
Unclick to finish talking

Raise your hand to ask a question

Share with emoticons

List of all participants

Chat with one person or the entire group



The screenshot shows the Blackboard Collaborate interface. The main area displays a presentation slide titled "Welcome to Blackboard Collaborate" with the ARCUS logo and the text "Arctic Research Consortium of the United States". The left sidebar contains several panels: a "TALK" panel with a microphone icon, a "PARTICIPANTS" panel listing "Sarah Crowley" with a hand icon, a "CHAT ROOM" panel with a list of messages, and a "CHAT" panel with a text input field. Arrows from the text labels on the left point to these specific interface elements.

Please Note:

- Participants using the telephone can mute/unmute by **pressing *6** on the phone.
- Today's event will be recorded and archived.



Questions

During the Presentation:

- Type your question in the text chat box

At the End of the Presentation:

- Raise your hand with the “hand button”.
- PolarTREC staff will call on you.
- Speak loud and clear and directly into the phone to ask your question.

Click on the Talk button to speak.

Unclick when you are done.



Participant Introductions

When called, please state your:

- ✓ Name
- ✓ School / Institution
- ✓ The number of students and adults participating with you in the same location

Connecting to the Poles with...



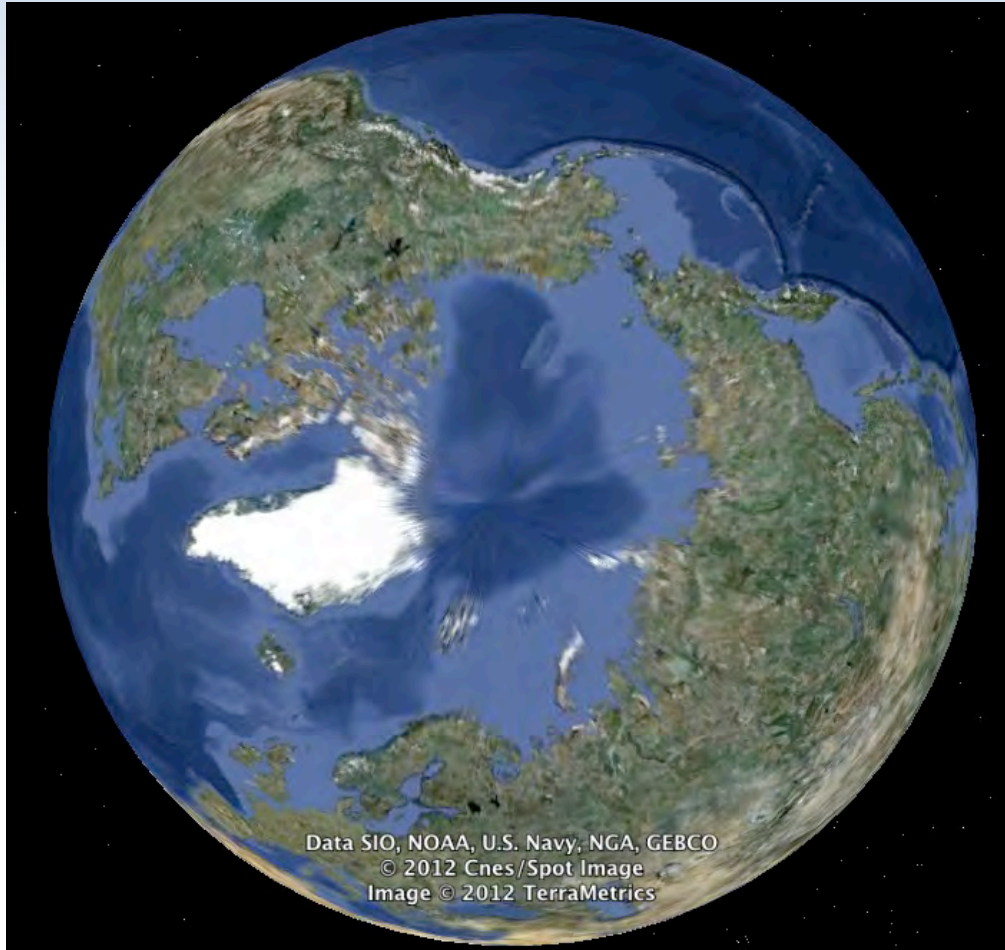
Jennifer Provencher



Piotr Angiel



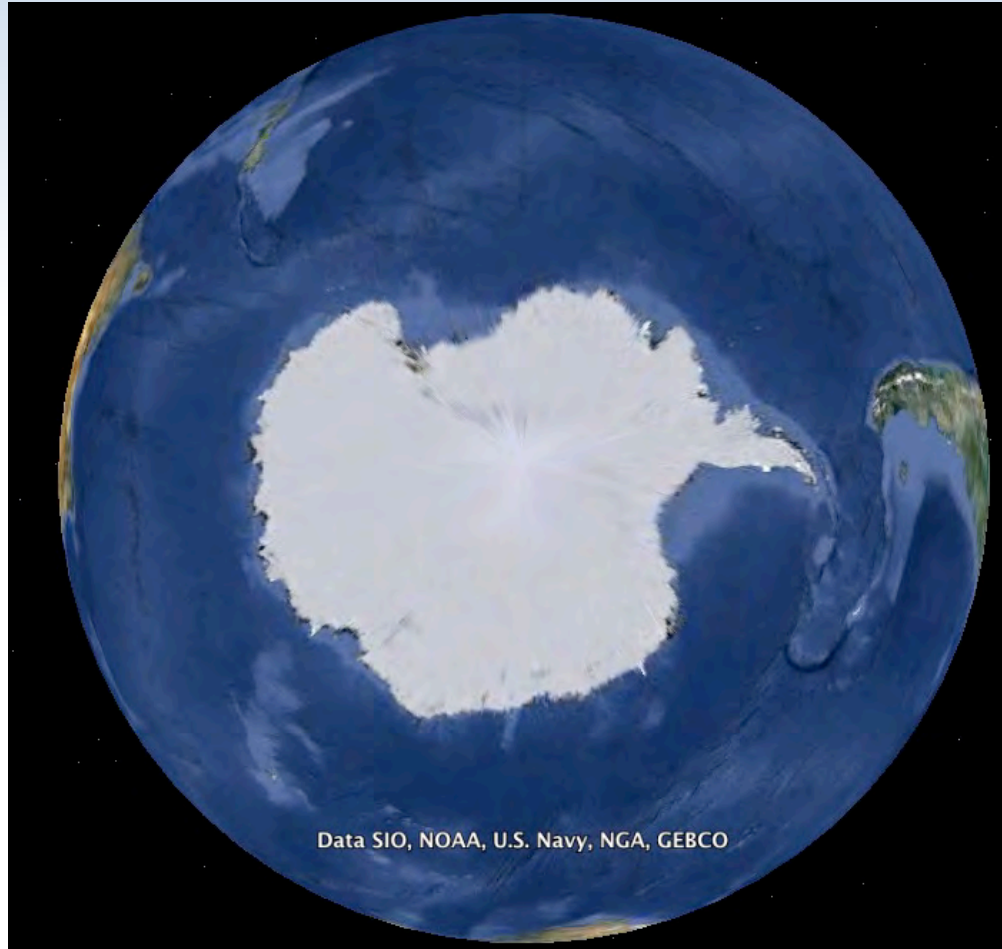
The ARCTIC



- ocean surround by land
- many countries involved
- free of ice seasonally

Data SIO, NOAA, U.S. Navy, NGA, GEBCO
© 2012 Cnes/Spot Image
Image © 2012 TerraMetrics

The ANTARCTIC



-land surrounded by ocean

- protected by Antarctic Treaty

- covered in ice most of year

Connecting to the Poles with....



Jennifer Provencher

PhD Student at Carleton University

She's been studying in the Arctic since 2007. Thanks to the Canadian International Polar Year!

She is interested in how marine birds can be used as indicators of marine environment and ecosystem health.



This is where I grew up!



When I was a kid I loved to swim!





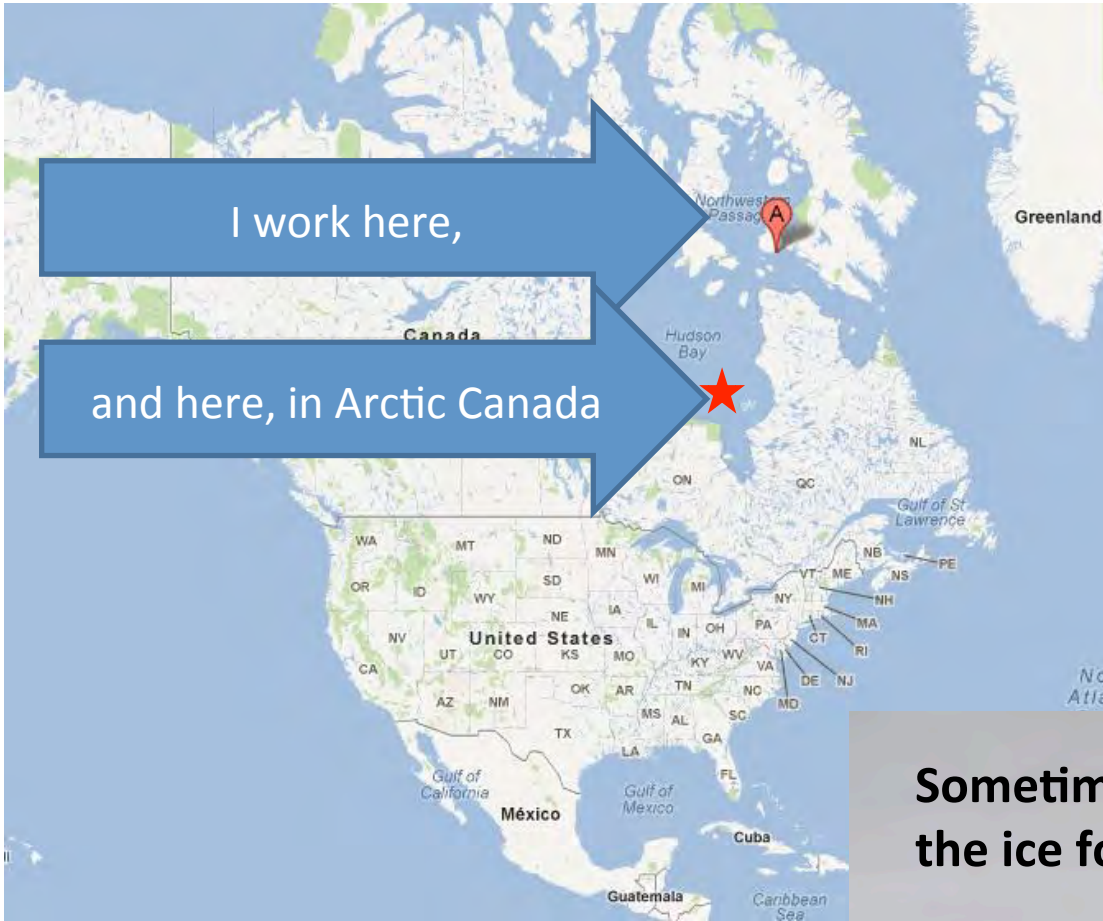
This is where I grew up!



Now I study swimming ducks

When I was a kid I loved to swim!





I work here,

and here, in Arctic Canada

With local hunters on skidoos.



Sometimes we have to wait a long time on the ice for the ducks to come.





We study boy ducks (the white and black ones) and girls ducks (the brown ones) to see how healthy they are.

Sometimes we give them bands and tags (duck jewelry) so we can track difference individuals.



**The best part of my job is that I get to explore new places,
and be outside a lot!**



And we get to make sure the ducks are nice and healthy.



Connecting to the Poles with....



Piotr Angiel

I am from Poland

I am a PhD Candidate at University of Western Ontario, Canada

I am a Geographer and Geologist.

Research: I was involved in several projects in Maritime Antarctica where I spent 2 years (including overwinter!).

My research focuses on glaciers retreat due to climate warming and its influence on ecosystems.

Glaciers on Iceland





Two years
on King George Island
(West Antarctic)



Windy Glacier
King George Island





Glaciers retreat
and plants colonization



Antarctic Krill



Climate change influence
on krill and penguin
populations



Gentoo Penguin

piotr@angiel.pl





Questions

During the Presentation:

- Type your question in the text chat box

At the End of the Presentation:

- Raise your hand with the “hand button”.
- PolarTREC staff will call on you.
- Speak loud and clear and directly into the phone to ask your question.

Click on the Talk button to speak.

Unclick when you are done.



Thank You!

An archive of the event will be available shortly.
<http://www.polartrec.com/polar-connect/archive>

