



TEACHERS AND RESEARCHERS
EXPLORING AND COLLABORATING

Welcome to *PolarConnect*

With Amber Lancaster and the
LARISSA Project
Weddell Sea, Antarctica

Monday 9 April 2012

8:30 a.m. AKDT

(9:30am PDT, 10:30am MDT, 11:30 am CDT, 12:30 pm EDT)

Blackboard collaborate

Slides will be shown here

Exit the presentation

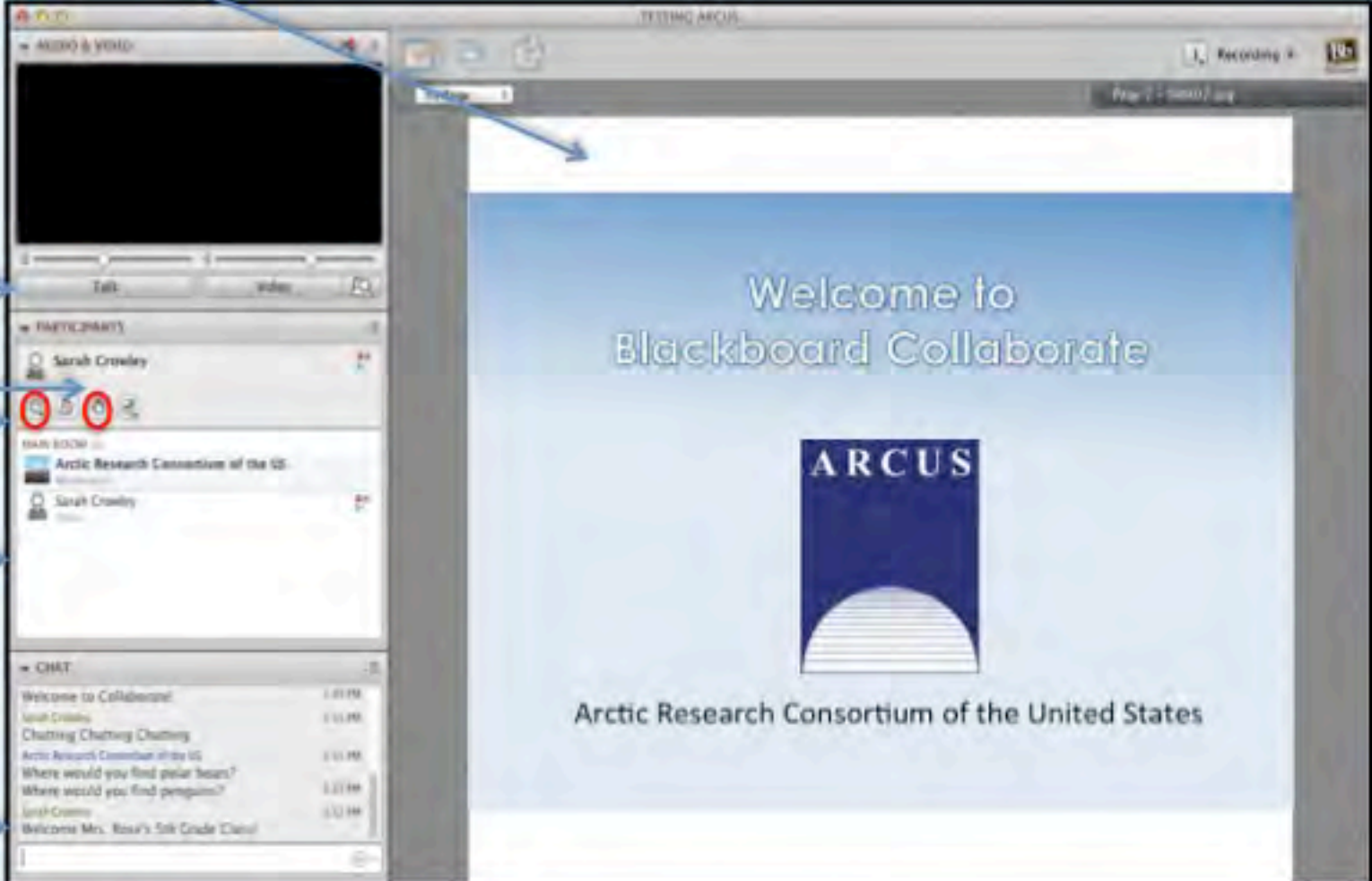
Click to Talk,
Unclick to finish talking

Raise your hand to ask a question

Share with emoticons

List of all participants

Chat with one person or the entire group



The screenshot displays the Blackboard Collaborate interface. The main window shows a presentation slide titled "Welcome to Blackboard Collaborate" with the ARCUS logo and the text "Arctic Research Consortium of the United States". The control panel on the left includes a "Talk" section with a microphone icon, a "PARTICIPANTS" list showing "Sarah Crowley" with a hand icon, a "CHAT" section with a list of messages, and a "Share with emoticons" section. Arrows point from the text labels on the left to the corresponding UI elements in the screenshot.

Please Note:

- Participants using the telephone can mute/unmute by **pressing *6** on the phone.
- Today's event will be recorded and archived.

Questions

During the Presentation:

- Type your question in the text chat box

At the End of the Presentation:

- Raise your hand with the “hand button”.
- PolarTREC staff will call on you.
- Speak loud and clear and directly into the phone to ask your question.

Click on the Talk button to speak.

Unclick when you are done.

Participant Introductions

When called, please state your:

- ✓ Name
- ✓ School / Institution
- ✓ The number of students and adults participating with you in the same location



TEACHERS AND RESEARCHERS
EXPLORING AND COLLABORATING

What is PolarTREC?

PolarTREC is a professional development experience in which K-12 teachers are paired with researchers for 2-6 week research experiences in the polar regions.

From 2010-2013, nearly 50 teachers from around the United States will join scientists in the Arctic and Antarctica to learn about science, the polar regions, and to share what they have learned with their students and communities.

LARISSA





TEACHERS AND RESEARCHERS
EXPLORING AND COLLABORATING

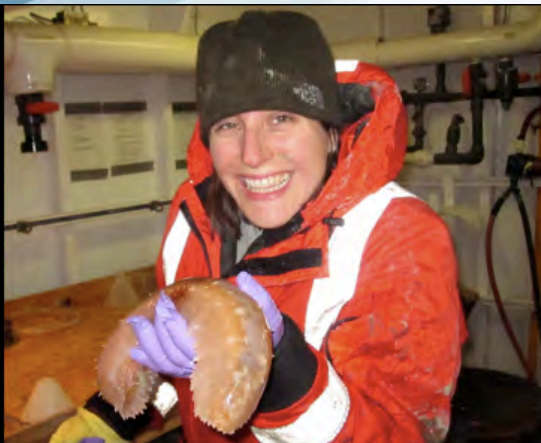


PHOTO BY PAULO SUMIDA

AMBER LANCASTER
POLARTREC TEACHER



PHOTO BY KATIE HAMAN

MARIA VERNET
CHIEF SCIENTIST
MARINE ECOSYSTEMS



PHOTO BY KATHLEEN GAVAHAN

BRUCE HUBER
CO-CHIEF SCIENTIST
OCEAN & ICE INTERACTIONS



AMY LEVENTER
GEOSCIENCES



TEACHERS AND RESEARCHERS
EXPLORING AND COLLABORATING

POLARTREC TEACHER



PHOTO BY PAULO SUMIDA

AMBER LANCASTER

**JUNE JORDAN SCHOOL FOR EQUITY
SAN FRANCISCO, CALIFORNIA**



TEACHERS AND RESEARCHERS
EXPLORING AND COLLABORATING



NATHANIEL B. PALMER

CRUISE MAP





TEACHERS AND RESEARCHERS
EXPLORING AND COLLABORATING



BEDROOM



BATHROOM

DELICIOUS FOOD IN THE GALLEY



FOR FUN



MY LUGGAGE





TEACHERS AND RESEARCHERS
EXPLORING AND COLLABORATING

WORK CLOTHES



SEA ICE



PANCAKE ICE



ICEBERGS



MINKE WHALES



**COMMERSON'S
DOLPHINS**



CRABEATER SEALS



EMPEROR PENGUINS





TEACHERS AND RESEARCHERS
EXPLORING AND COLLABORATING

OCEAN & ICE INTERACTIONS

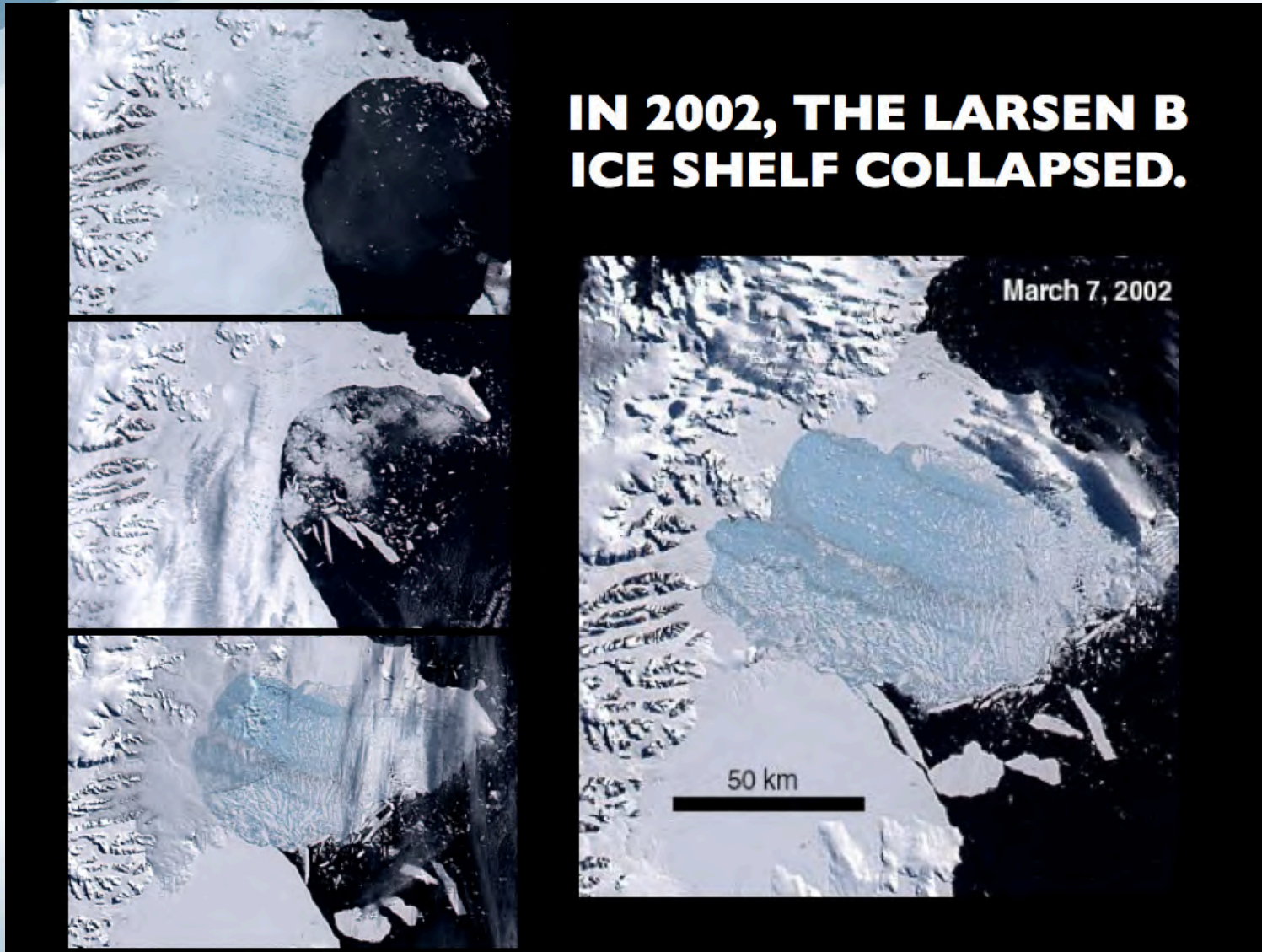


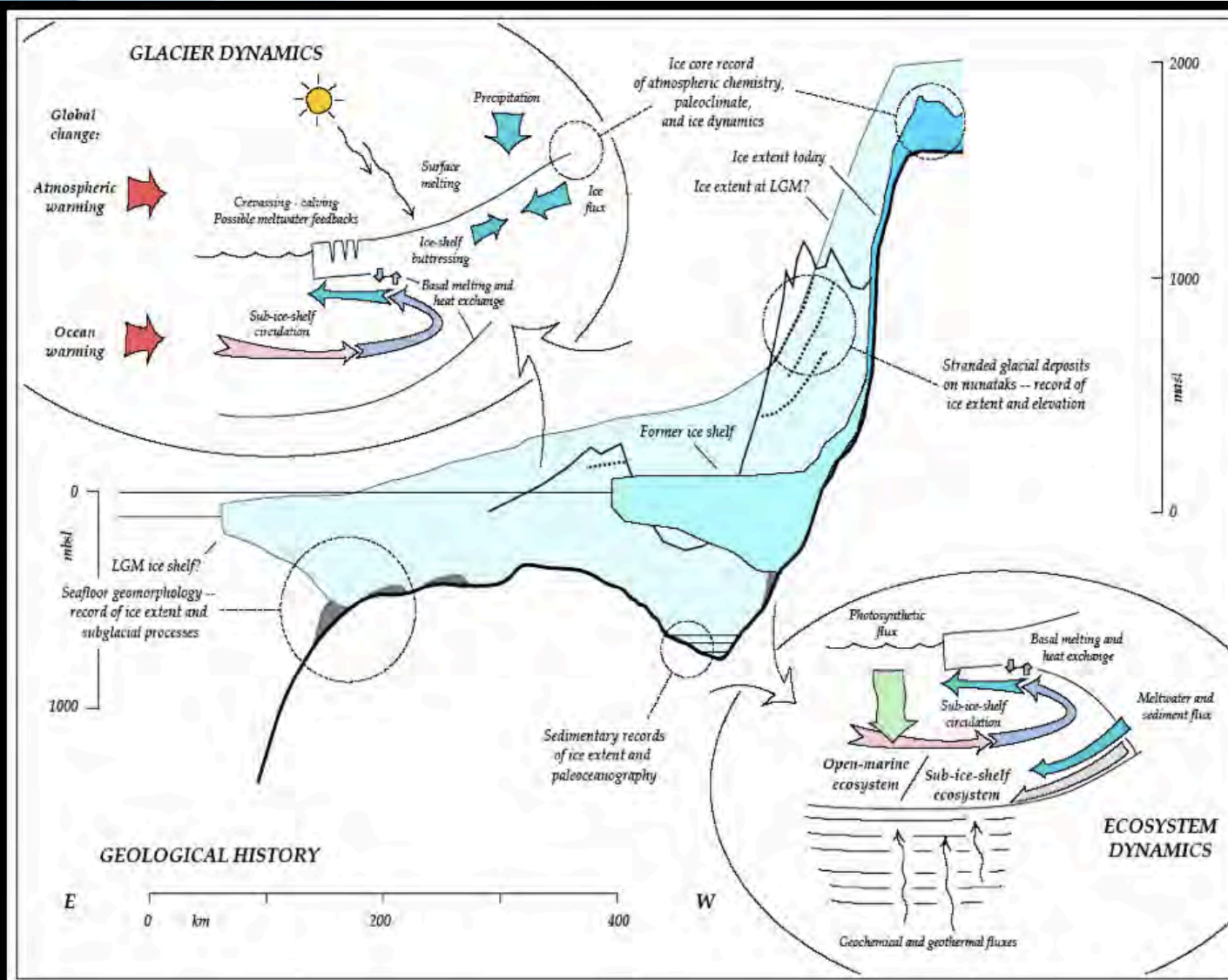
PHOTO BY KATHLEEN GAVAHAN

BRUCE HUBER
LAMONT-DOHERTY EARTH OBSERVATORY

LARSEN ICE SHELF SYSTEM





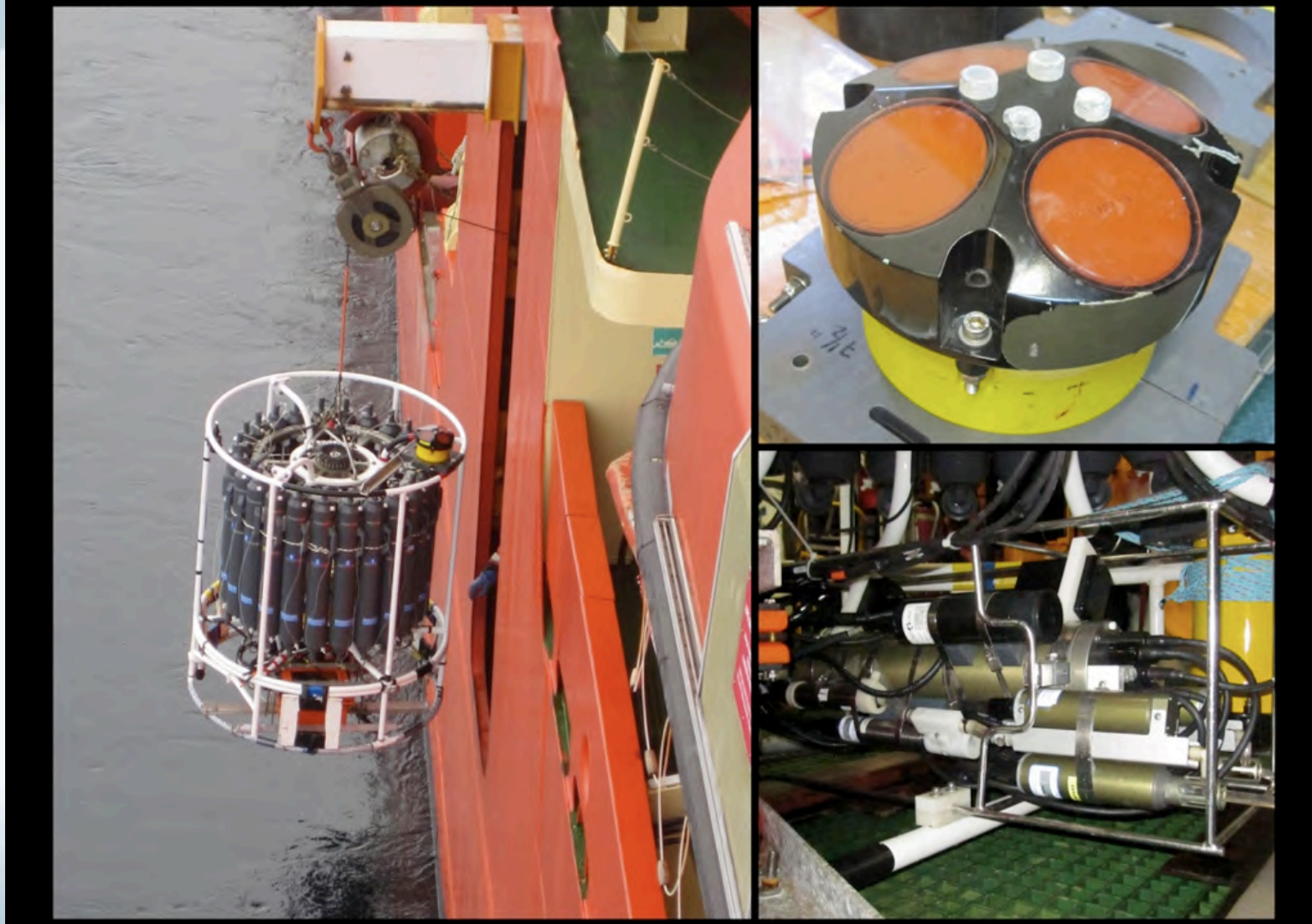


AMIGOS



PHOTO BY BRUCE HUBER

CTD - CONDUCTIVITY TEMPERATURE DEPTH



MOORINGS



ALL PHOTOS BY CAROLINE LAVOIE

GEOSCIENCES



AMY LEVENTER

COLGATE UNIVERSITY

ON WATCH

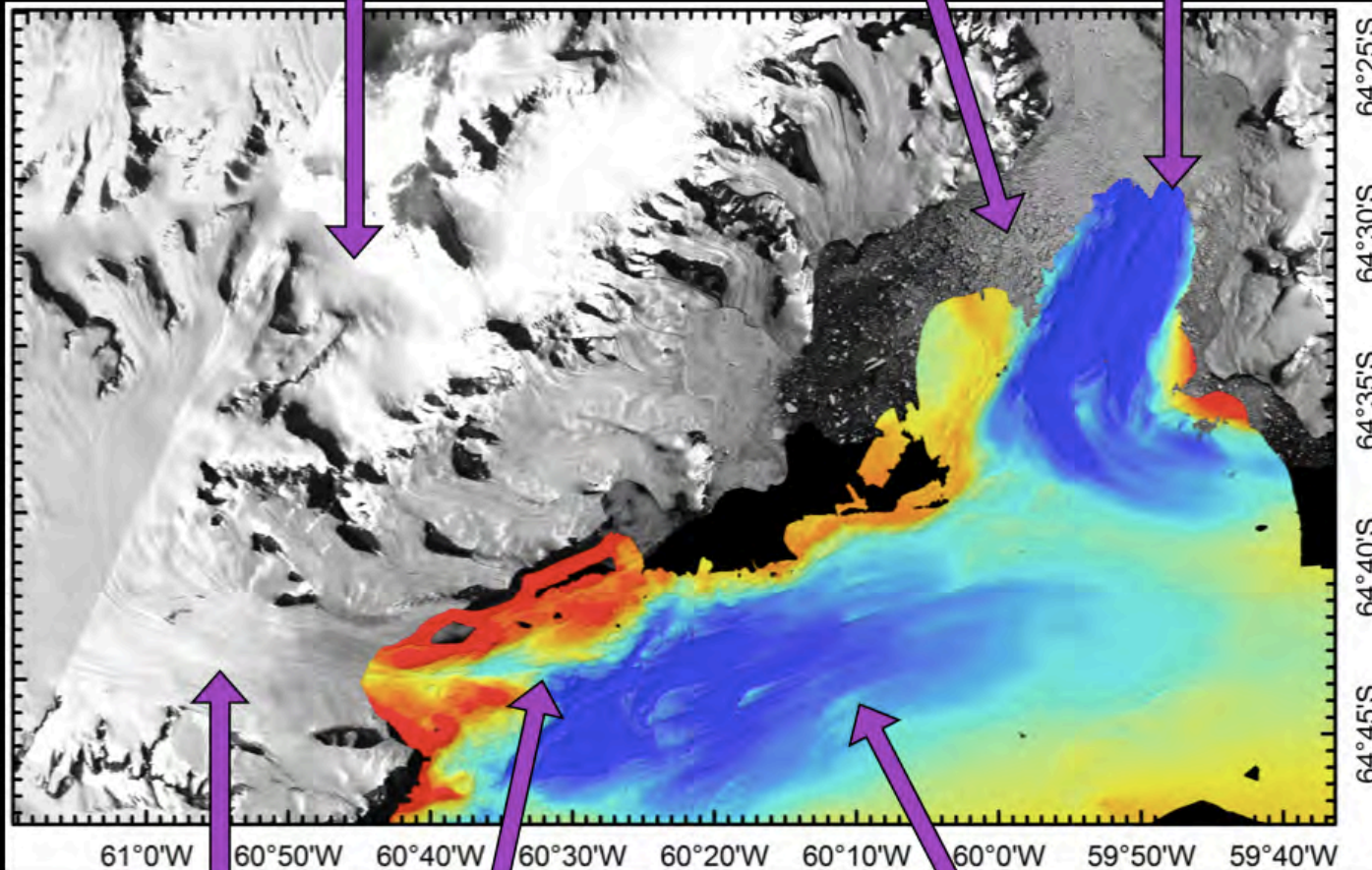


MULTIBEAM SURVEY

**ANTARCTIC PENINSULA
ICE CAP**

SEA ICE

BOMBADIER BAY



**DRYGALSKI
GLACIER**

**DRYGALSKI
TROUGH**

**GREENPEACE
TROUGH**

JUMBO PISTON CORE



ALL PHOTOS BY KARA VADMAN

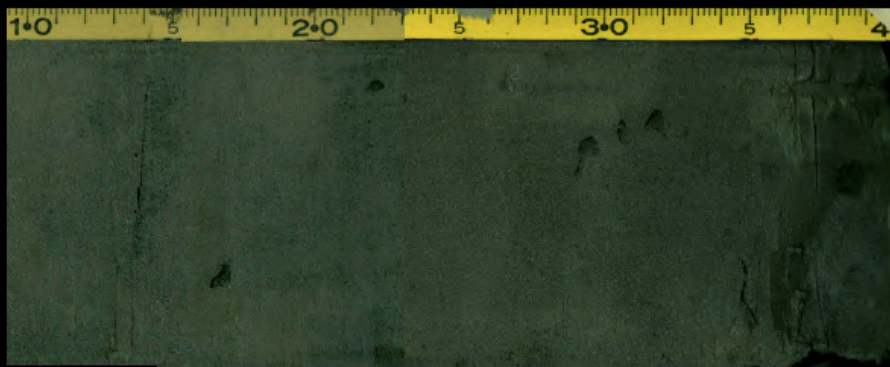
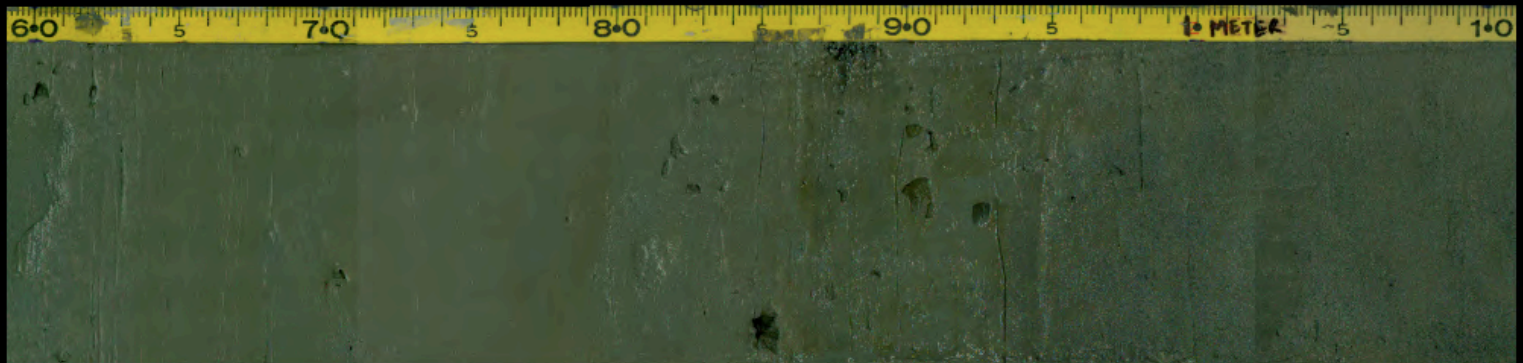
KASTEN CORE



PHOTO BY NATALIE ELKING



PHOTO BY NATALIE ELKING



**140 CENTIMETERS
OF MARINE MUD**

SIEVING



DIATOMS



PHOTO BY AMY LEVENTER

FORAMS

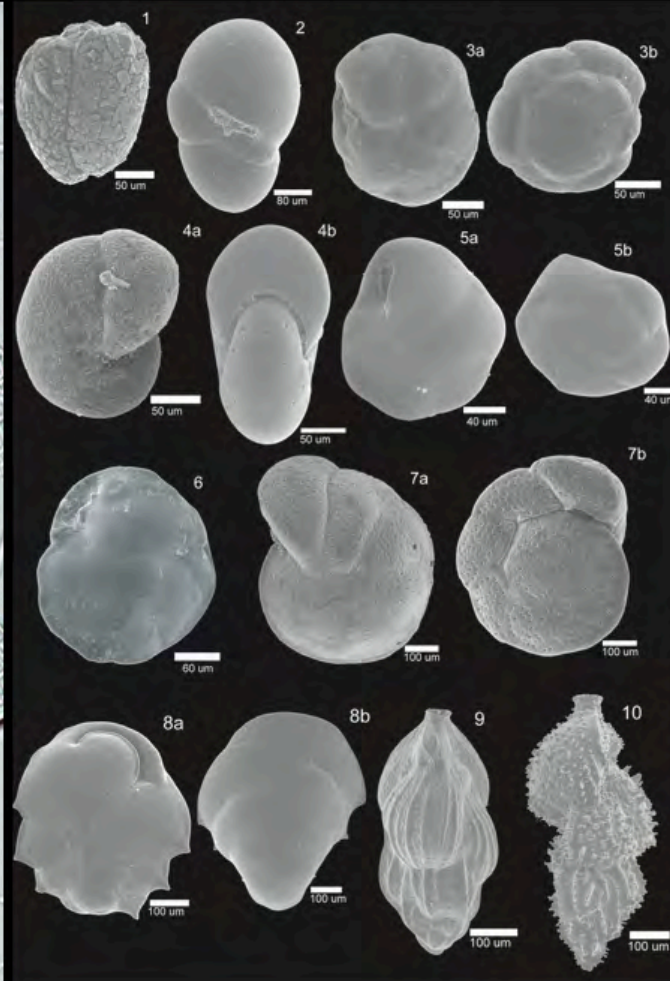


PHOTO BY SCOTT ISHMAN



TEACHERS AND RESEARCHERS
EXPLORING AND COLLABORATING

MARINE ECOSYSTEMS



PHOTO BY KATIE HAMAN

MARIA VERNET
SCRIPPS INSTITUTE OF OCEANOGRAPHY
UNIVERSITY OF CALIFORNIA, SAN DIEGO

www.polartrec.com

PHYTOPLANKTON



PHOTO BY MATTIAS CAPE

PROFILING RADIOMETER



PHOTO BY LINDSEY EKERN
PHOTO BY KATIE HAMAN

ICE CORING

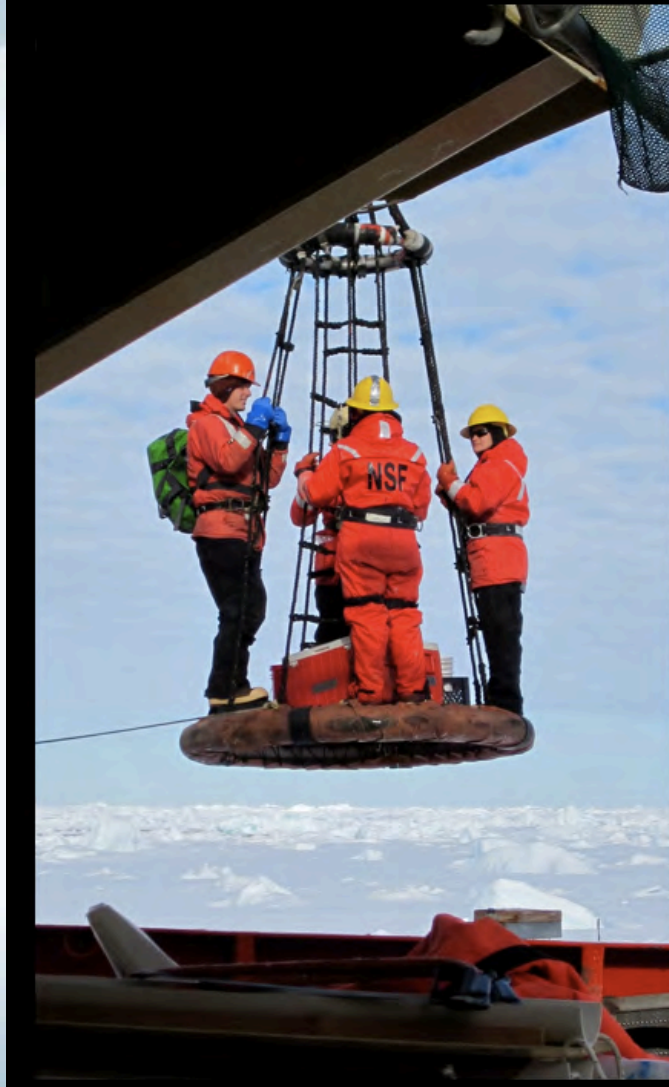


PHOTO BY LINDSEY EKERN



PHOTO BY KATIE HAMAN

MEGACORE

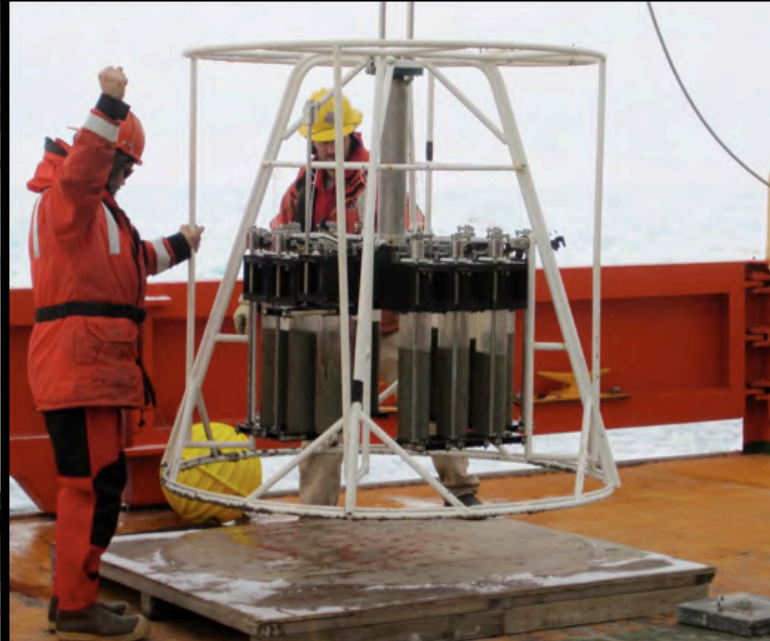


PHOTO BY PAVICA SRSEN

BLAKE TRAWL

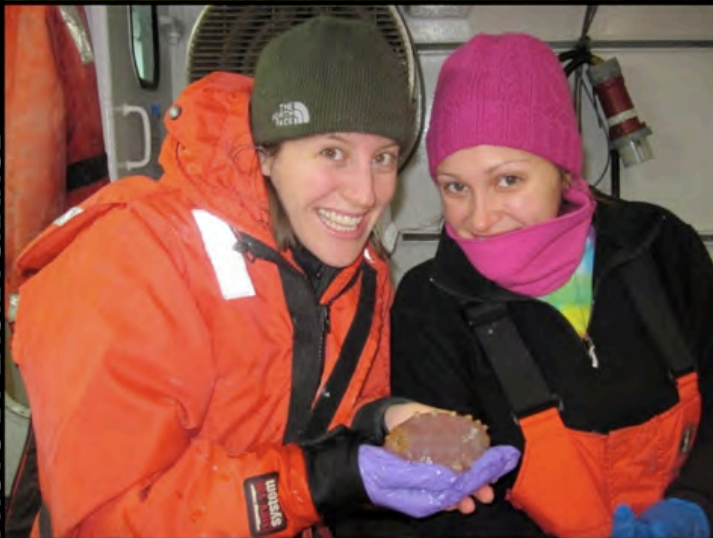


PHOTO BY LAURA GRANGE

YO-YO CAMERA



ALL PHOTOS BY CRAIG SMITH

WHALE BONE LANDER



PHOTO BY DAVID HONIG



PHOTO BY CRAIG SMITH



PHOTO BY CRAIG SMITH

KASTEN CORE SAMPLING



GLOVE BOX & MICROPROBING

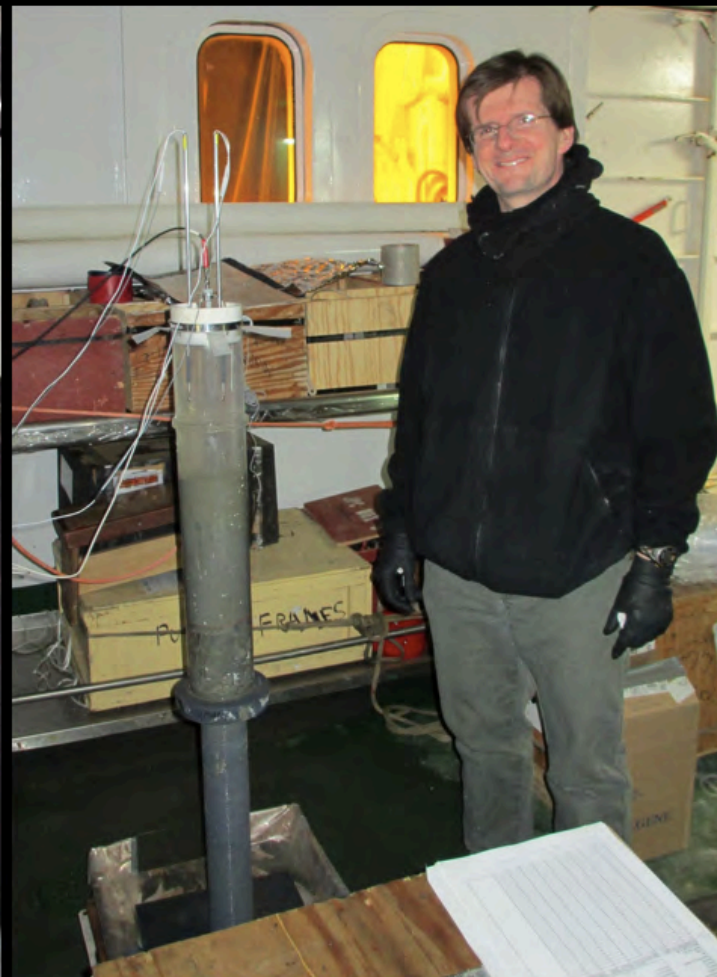


PHOTO BY JACKIE MUELLER

LABWORK

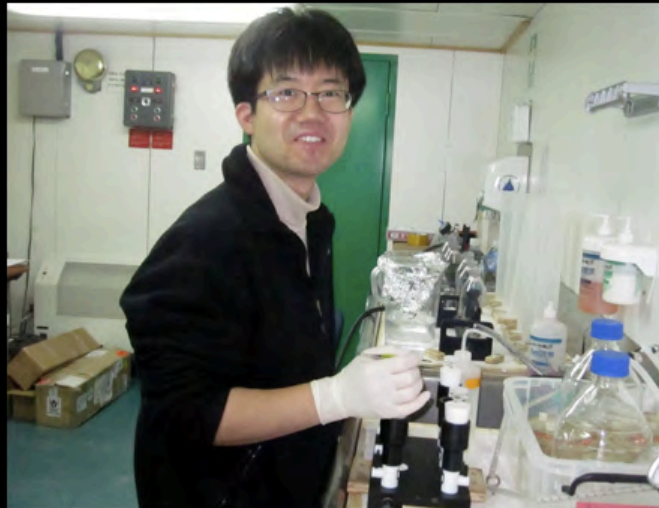
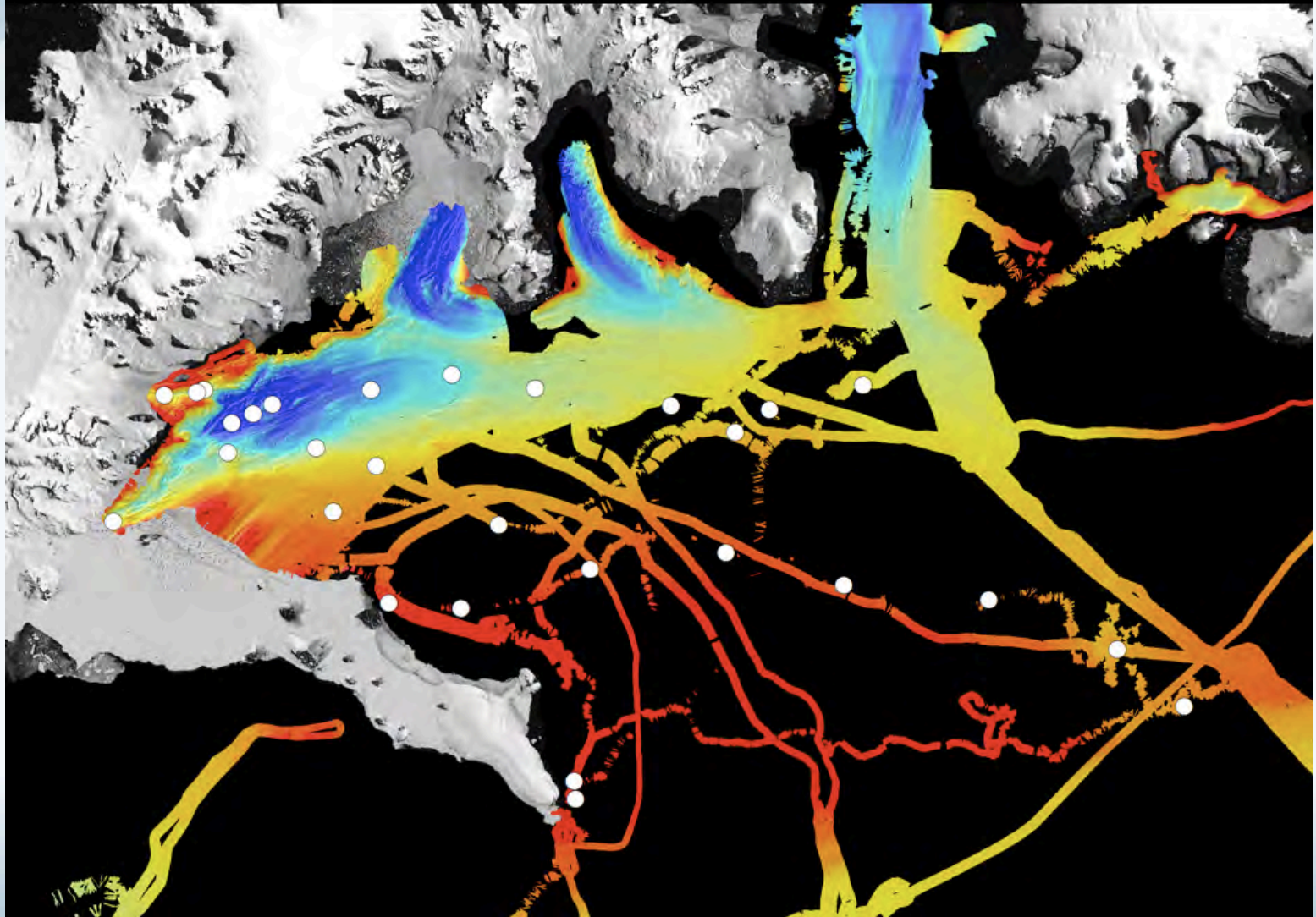


PHOTO BY LIZ BUCCERI

STATIONS





TEACHERS AND RESEARCHERS
EXPLORING AND COLLABORATING



ANY QUESTIONS?

www.polartrec.com

LARISSA



Q&A



TEACHERS AND RESEARCHERS
EXPLORING AND COLLABORATING

Teachers: Join PolarTREC!

www.polartrec.com/about/join

Every teacher can participate in different ways:

- **Following Expeditions**
- **Participate in PolarConnect Events**
- **Join the Polar Education Email List**
- **Take Online Professional Development Courses**
- **Become a PolarTREC Teacher!**



TEACHERS AND RESEARCHERS
EXPLORING AND COLLABORATING

Upcoming Events

Watch for and register for upcoming events at [www.polartrec.com!](http://www.polartrec.com)



TEACHERS AND RESEARCHERS
EXPLORING AND COLLABORATING

Thank You!

An archive of the event will be available shortly.
<http://www.polartrec.com/polar-connect/archive>

