

# PolarTREC Webinar 2

## Pre-Field Preparations and Activities



9 September 2014

Slides will be shown here

Exit the presentation

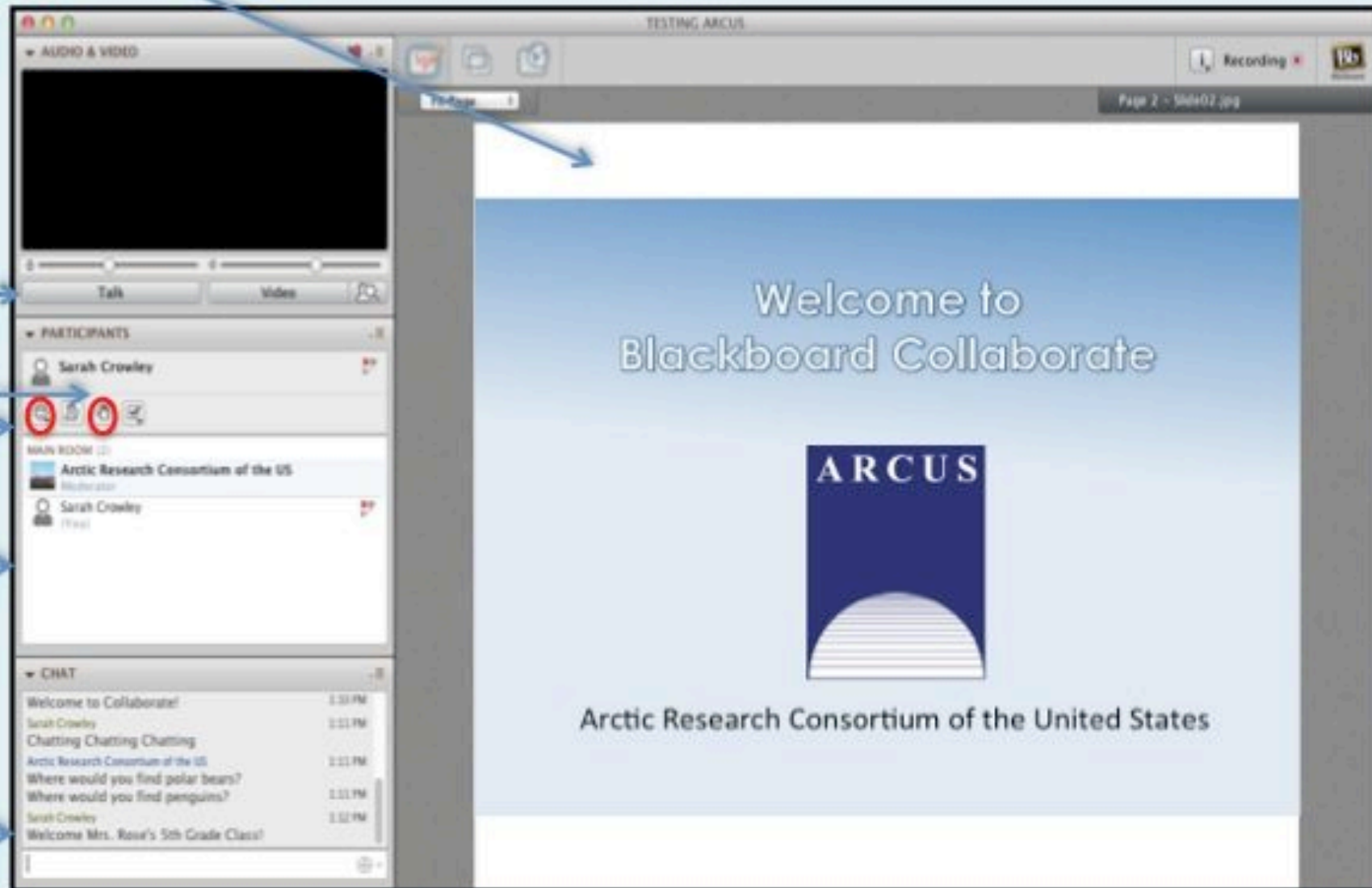
Click to Talk,  
Unclick to finish talking

Raise your hand to ask a question

Share with emoticons

List of all participants

Chat with one person or the entire group



The screenshot shows the Blackboard Collaborate interface. On the right, a presentation slide titled "Welcome to Blackboard Collaborate" is displayed, featuring the ARCUS logo and the text "Arctic Research Consortium of the United States". On the left, a control panel is visible with several sections: "AUDIO & VIDEO" with a "Talk" button and a "Video" button; "PARTICIPANTS" showing a list of participants including Sarah Crowley and Arctic Research Consortium of the US; "MAIN ROOM" with a list of participants; and "CHAT" with a list of messages. Blue arrows point from the text labels on the left to the corresponding elements in the interface.

## Please Note:

- Participants using the telephone can mute/unmute by **pressing \*6** on the phone.
- Today's event will be recorded and archived.



The 2014-2015 PolarTREC Team!

# Agenda

- Introduction, Welcome, and Roll Call
- Webinar 2 Goals
- Pre-Field Logistics
- Pre-Field Program Requirements Refresher
- Putting your E&O Plan to Work
- Questions & Answers & Adjourn

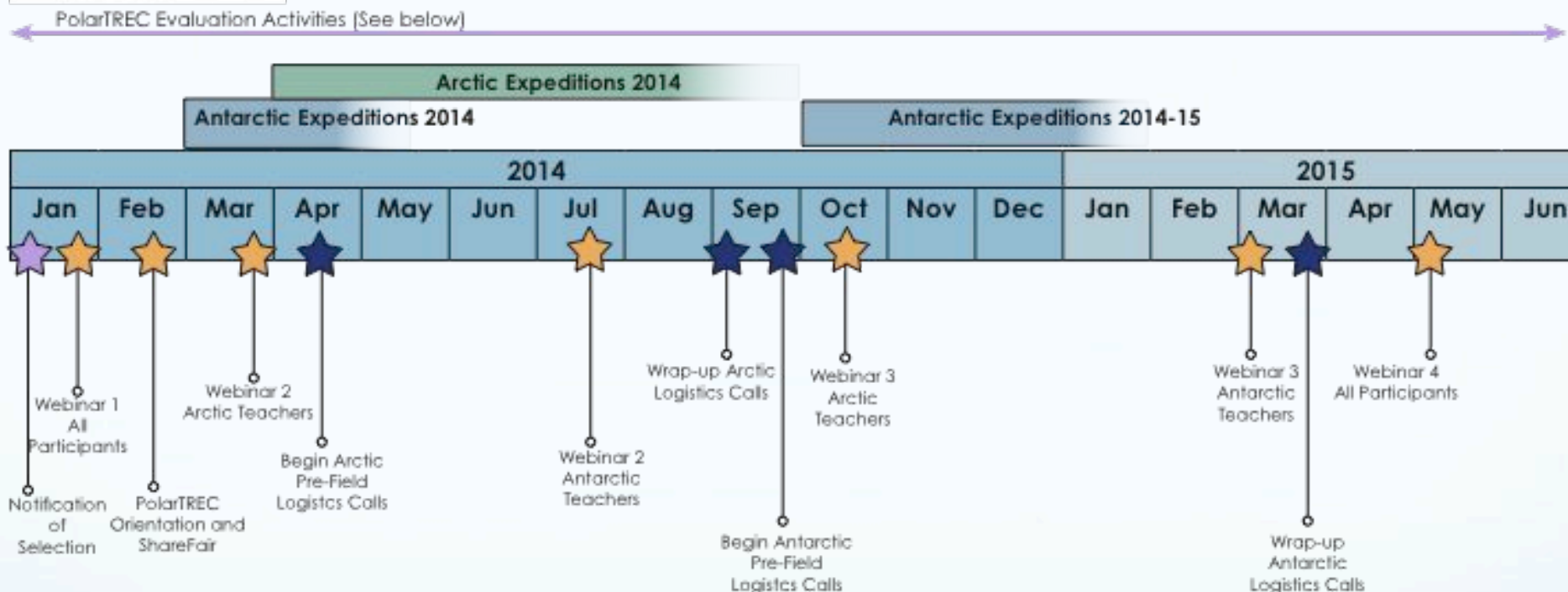
# Goals of Webinar

- To help you focus on the expedition including logistics.
- Sharing ideas of how you might go about engaging your students and the public before, during, and after the expedition.





## 2014-2015 Timeline of Major Program Activities



**★ Evaluation Activities**  
 Angela Larson/Goldstream Group  
 All participating teachers and researchers are asked to contribute to our program evaluation throughout their experience. We aim to understand the PolarTREC program's effect on:

- teacher polar science & content knowledge
- teacher integration of polar science into classrooms
- student understanding and interest in science
- researcher engagement in K-12 education

- ★ Phone Calls, In-Person Meetings, and Webinars
- ★ Note: Additional training webinars may be held for teachers as demand warrants.
- ★ PolarTREC will offer enrichment/professional development opportunities through out the year which may include of webinars, field courses, and presentations at regional and national conferences.

# Who Does What Again?

Who?	What?
Lockheed Martin (Elaine Hood, Contractor)	Pays for and arranges airfare, arranges lodging, Processes PQ and travel paperwork, Provides ECW gear (on location)
ARCUS	Reimburses your school for substitute. Reimburses you for medical expenses not covered by insurance, lodging in Christchurch, covers per diem on days travelling to and from Antarctica
Researchers	Include you on their SIP, Shouldn't be paying for anything!
Teachers	Complete PQ and travel paperwork, make copies, send it off as it is completed



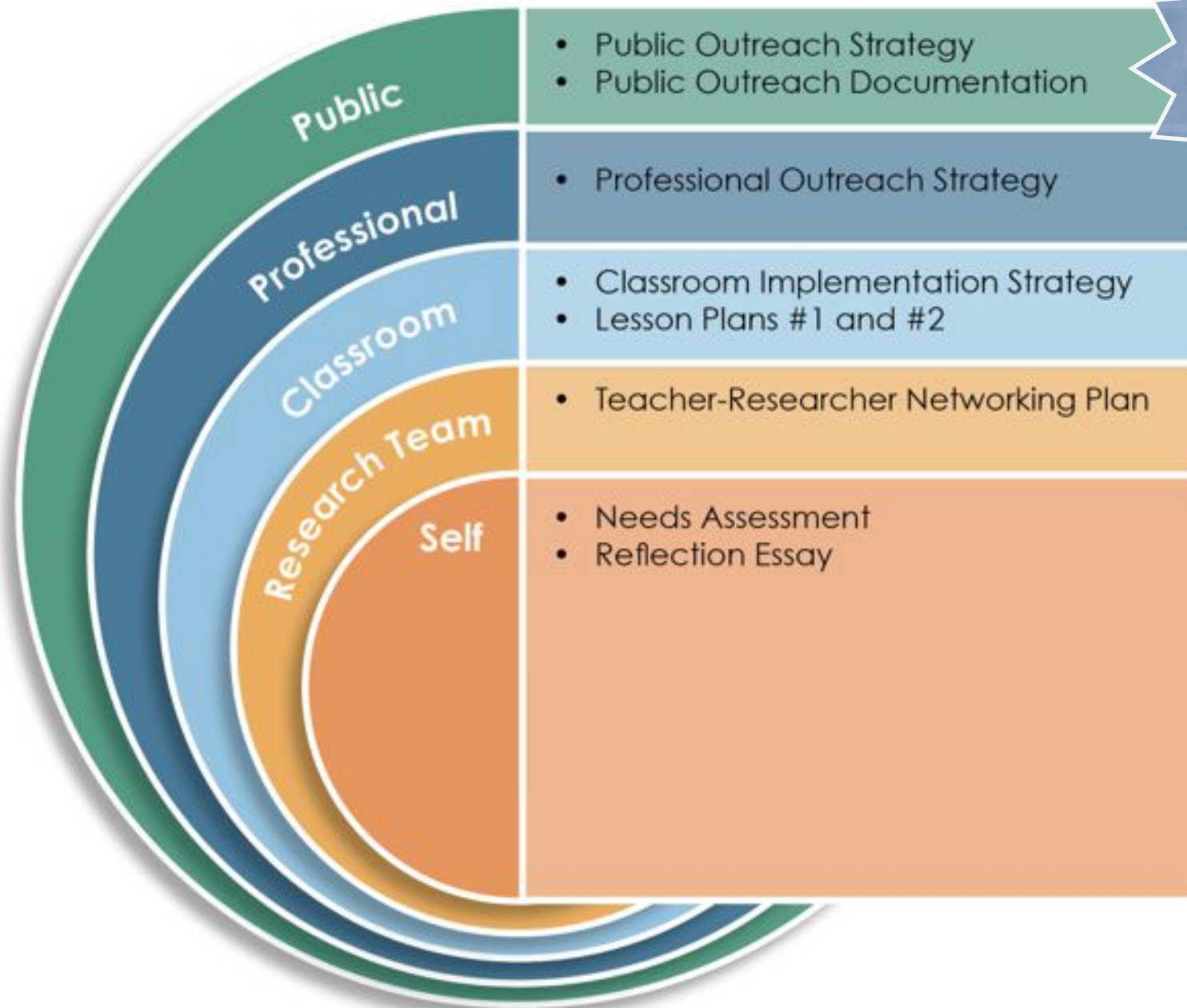
Read  
Me!



# Pre-Field Reminders

1. Travel arrangements will be made through Lockheed Martin but we can start working on the details before a pre-field call.
2. You are allowed personnel travel time after the expedition.
3. Substitute costs will be reimbursed to the school after your expedition is complete.
4. Medical costs, various insurances, visa fees, misc., not covered by the contractor will be paid by ARCUS
5. ARCUS can issue a travel advance, if needed.
6. We do have ECW kits that you can check out

# Education & Outreach Plan



Public  
Science  
Report

In Tab 4  
of your  
notebook!

# Why do Education & Outreach Planning?

- Provides a focus to the professional development experience
- Solidifies ideas for sharing experience to with others
- A means to begin collaboration and discussion with the research team
- Provides data for evaluations (NSF, School Administration)
- Documents experience for recognition (for school administration, future expeditions, future funding)



# Putting Your E&O Plan to Work

- News, TV, Radio Media
- Live Events & Phone Calls from the Field
- Generate Weblinks
- Don't forget about adults that will be following
- Maintain an e-mail list with followers pre-field
- Presentations & Connections with community groups



## ARCUS Support Tools for Education and Outreach

- Pre-Field Logistics Calls
- Press Release
- Publications
- Website
- Online Newsroom
- Travel Support
- ECW Kit
- Partner Teachers!



# Teacher Perspective

Each teacher can share:

1. One activity or idea that students are going to be involved in pre & during your expedition.
2. One activity or idea for involving their community taking place before or during your expedition.
3. Tips for success!
4. Ideas for post-expedition education and outreach.

# Jillian Worssam

Sea Floor Changes and the Antarctic Circumpolar Current

18 September – 15 October

Research Vessel Nathaniel B. Palmer



# Dominique Richardson

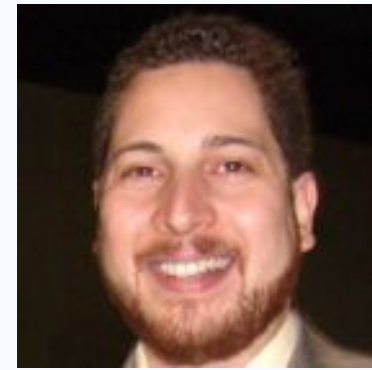
Antarctic Ice Stream Dynamics  
March – April 2015  
Research Vessel Nathaniel B. Palmer





# Armando Caussade

Ice Cube Neutrino Observatory 2014  
December 2014  
South Pole Station



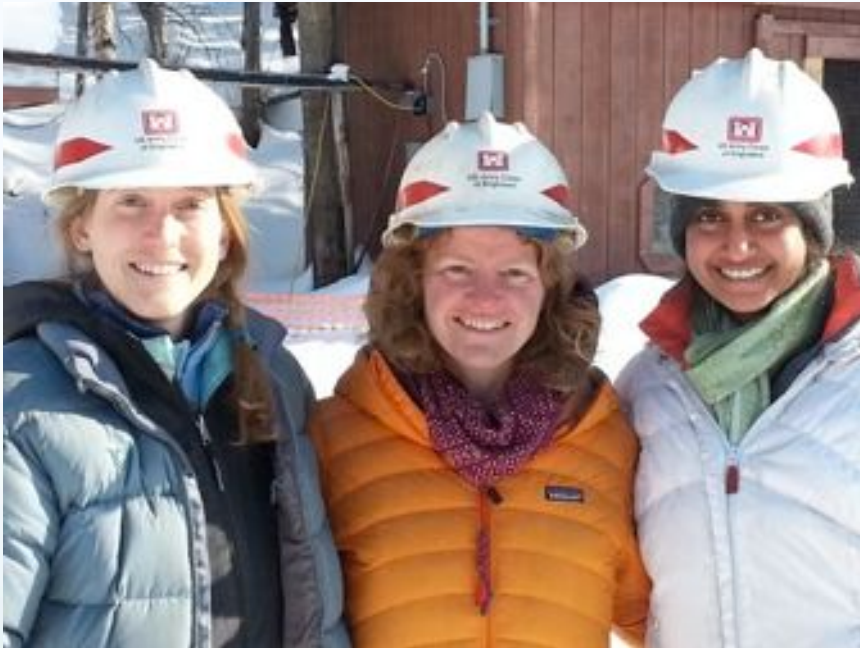
# Lucy Coleman

Microbialites in Lake Joyce Antarctica  
10 October – 17 December 2014  
Lake Joyce, Dry Valleys



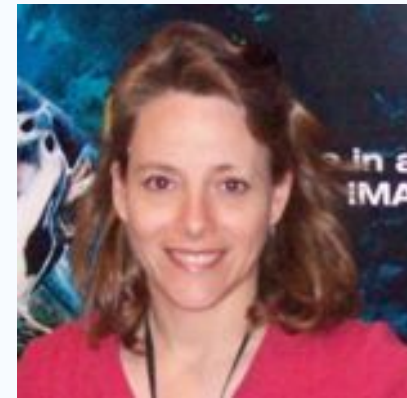
# Yamini Bala

West Antarctica Ice Sheet Microstructures  
November – December 2014  
WAIS Divide



# Alex Eilers

Weddell Seals in the Ross Sea 2014  
November – December 2014  
McMurdo Station

A screenshot of a website titled "Antarctica Revisited". The header features a photo of a person running on ice and the text "Alex is going back to Antarctica. Follow and participate in the journey." Below the header is a navigation bar with links for Home, Register, Log, and Journey Map. The main content area includes a "Sign in for more..." section with fields for Email address and Password, and buttons for Login, Register, and Request new password. There are also two featured cards: "Get Fit - Antarctica" and "Fly a Flag".

**Antarctica Revisited**  
Alex is going back to Antarctica. Follow and participate in the journey.

[Learn more >](#) [Follow my Blog >](#)

[Home](#) [Register](#) [Log](#) [Journey Map](#)

**Sign in for more...**

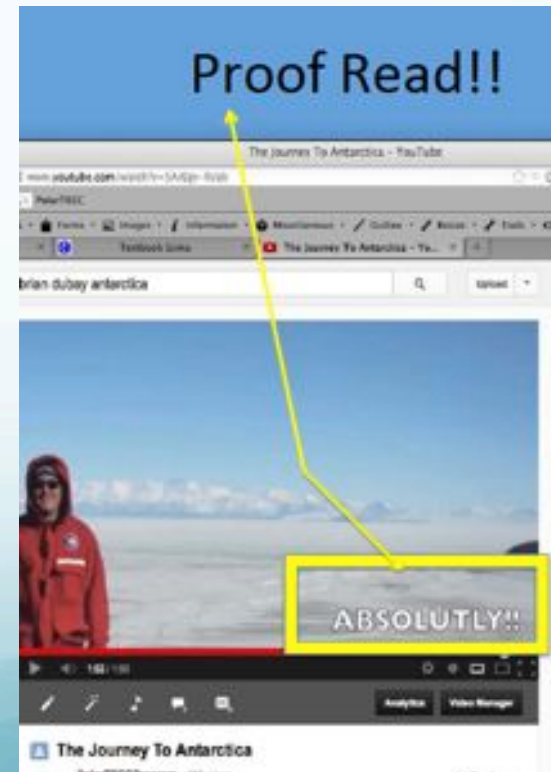
Email address  
Password  
[Login](#)  
[Request new password](#)  
[Register](#)

**Get Fit - Antarctica**  
Exercise your mind and body while you join Alex on her journey from Memphis to Antarctica, learning interesting facts about health, nutrition, exercise, science, math, and history along the way.  
[More details >](#)

**Fly a Flag**  
Fly a Flag over Antarctica!  
Decorate your own flag while taking a CLOSER LOOK at Weddell Seals and other Antarctic topics. Send your flag with Alex and she will fly over Antarctica and send it back to you - with a picture of it!  
[More details >](#)

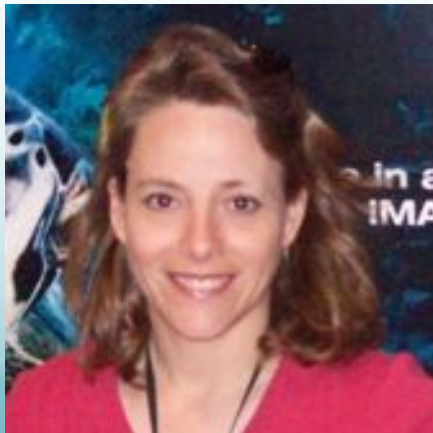
# Brian DuBay

Tectonic History of the Transantarctic Mountains  
November – December 2014  
McMurdo Station



# Adding the Alumni Perspective

Tips  
Tricks  
Suggestions  
and  
Success



# Last Thoughts from Michelle & Johannah

- Practice, Practice, Practice! (even if there's not much to journal about)
- Stock up on stories for later
- Stay open-minded, curious, and flexible; this experience is just the beginning.



A photograph of a massive glacier with a jagged, blue-tinged ice wall. In the foreground, dark volcanic rocks are scattered along the shore, and the water is filled with numerous icebergs of various sizes, some appearing as small chunks and others as large, rounded blocks. The overall scene is a stark, cold, and majestic natural landscape.

Tell your Story...





**Be a team player!!**



**Bridge the gap!**



**Don't get caught in the storm!**

**Be prepared!!**



**Have Fun!**



Questions?

