

Welcome to a Special Live Event!
Cabrillo Marine Aquarium Earth Day Festival
Antarctic Ice Stream Dynamics

with Dominique Richardson
and the Ice Stream Dynamics Team
aboard the R/V Nathaniel B. Palmer

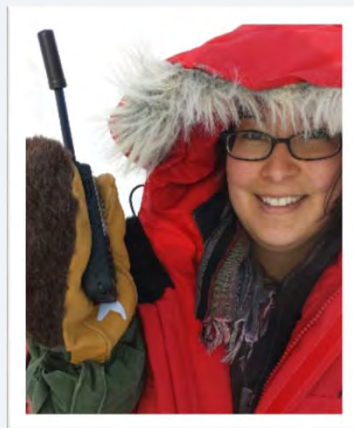
April 18th, 2015



The Team



Dr. Frank Nitsche
Chief Scientist



Dominique Richardson
Educator



Dr. Dave
Porter



Ricardo
Correia



Dr. Alex
Fraser



Eva
Coughon



Dr. Guy
Williams



Dr. Raul
Guerrero



In East Antarctica...



Map base from kainani.hpu.edu



Map base from maps-world.net

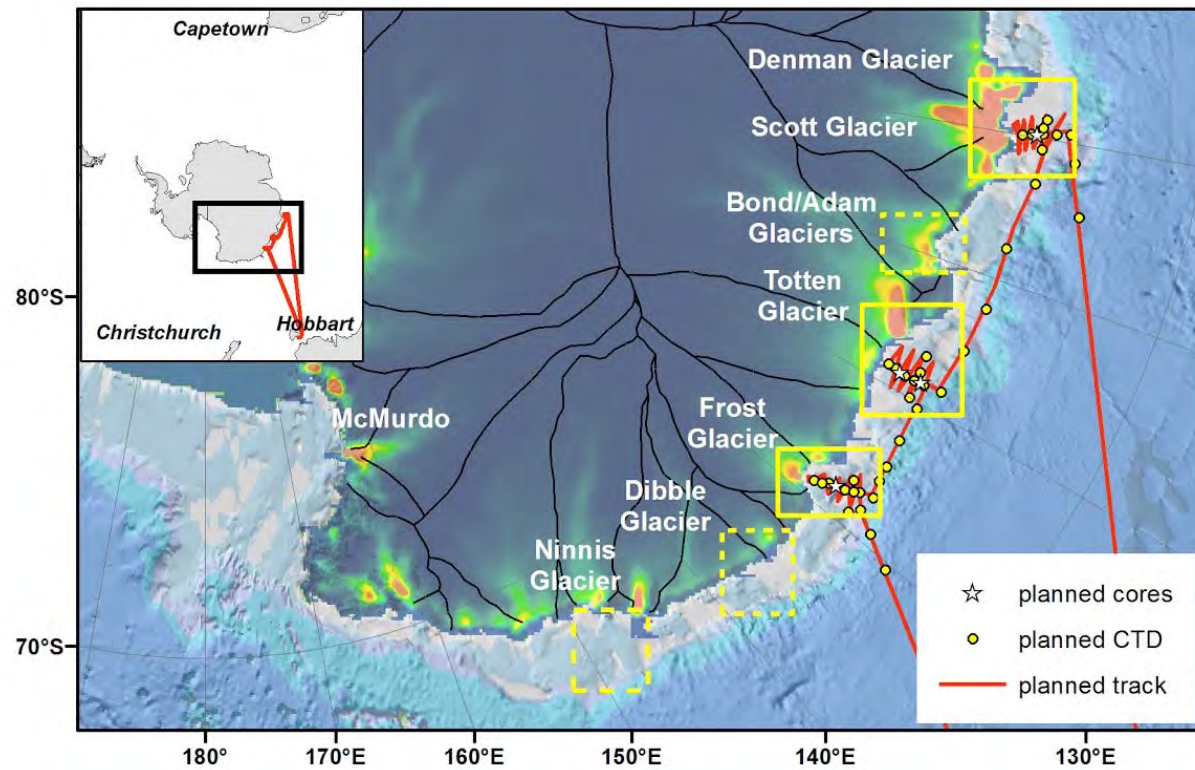


Chart by Frank Nitsche

On board the R/V Nathaniel B. Palmer



Photo by Peter Rejcek, National Science Foundation



Photo by Adam Jenkins, National Science Foundation

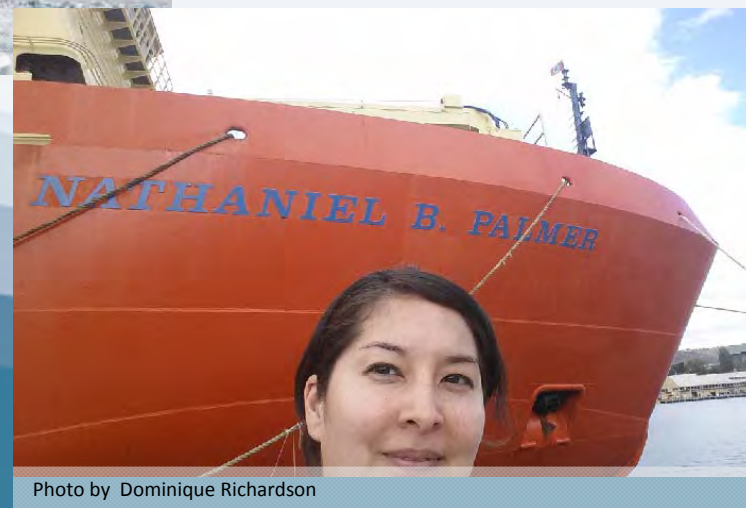


Photo by Dominique Richardson

Ice Stream Dynamics



Photo Courtesy of NASA

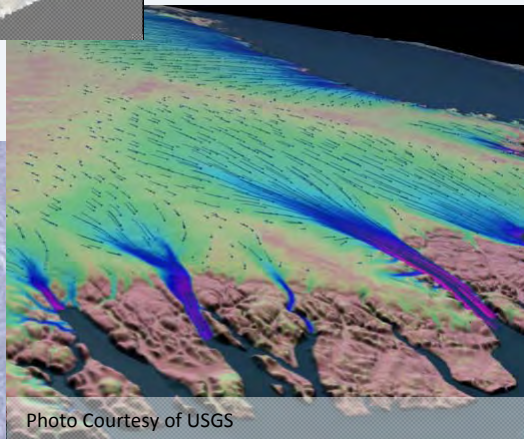


Photo Courtesy of USGS

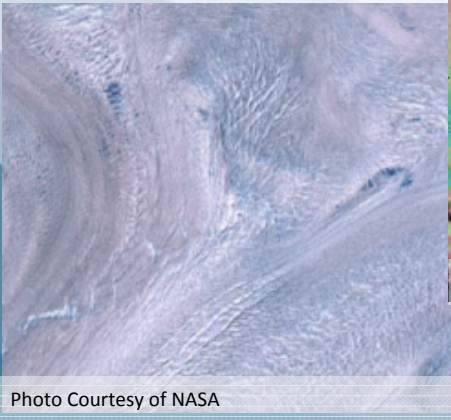
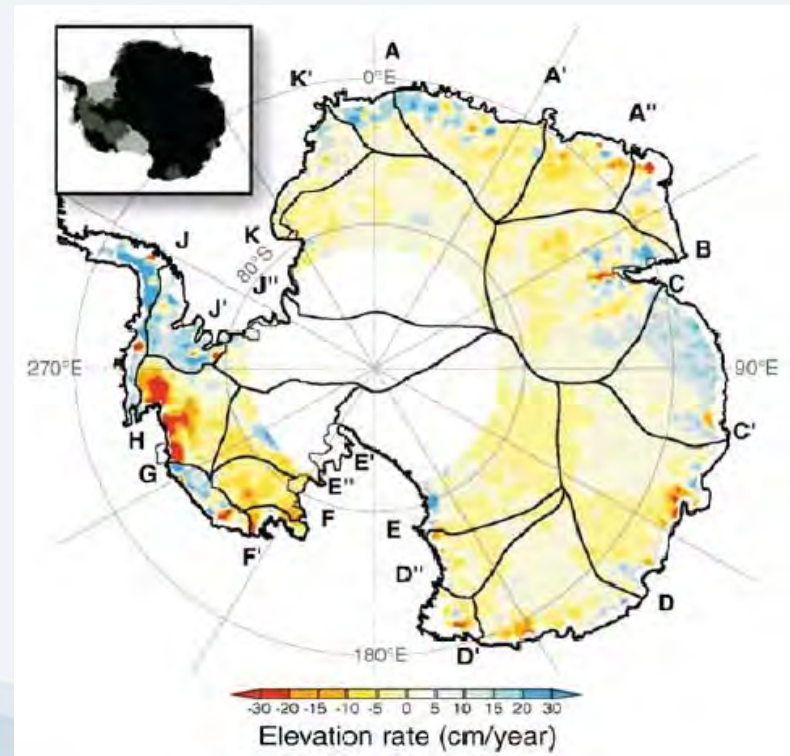
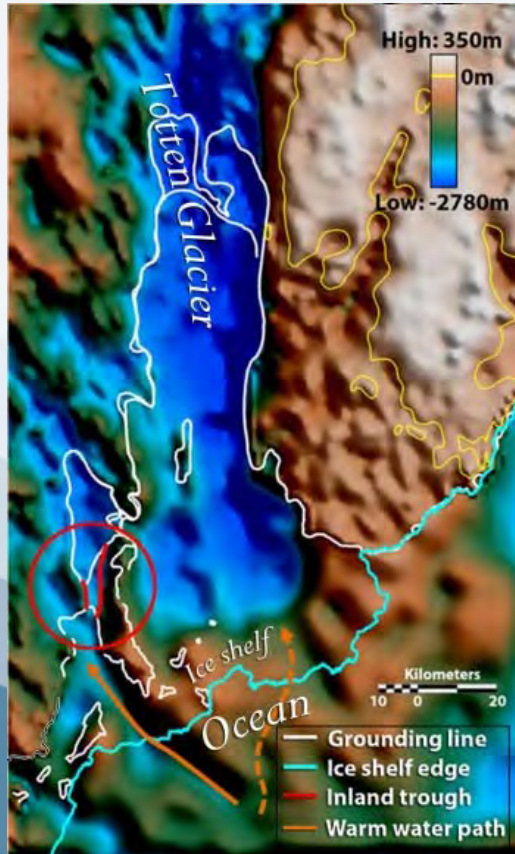


Photo Courtesy of NASA

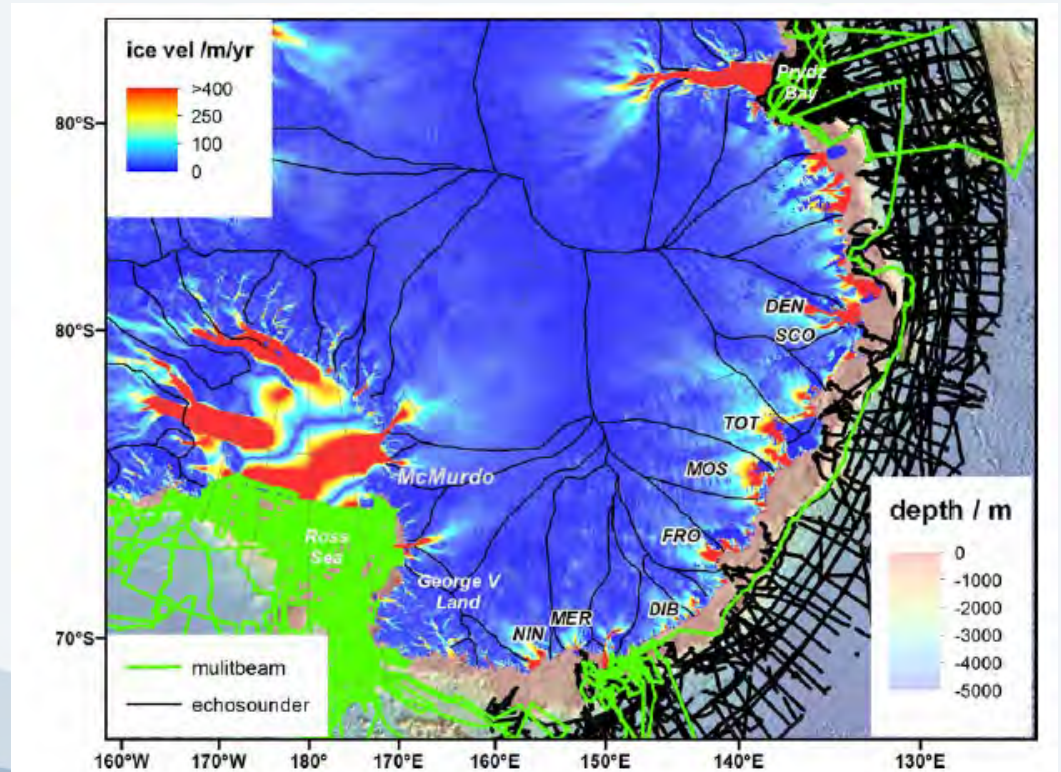


Shepherd and Wingham, 2007

Ice Stream Dynamics

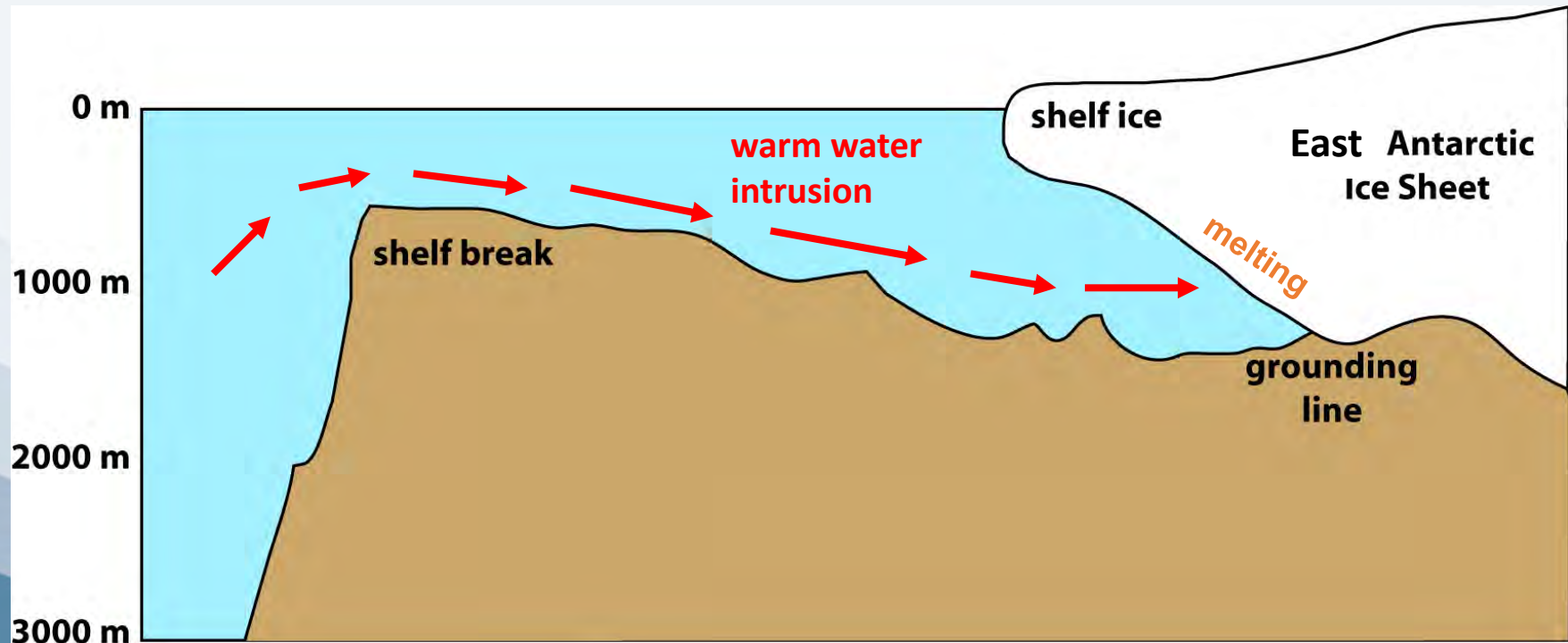


Greenbaum et al., 2015



Timmermann et al., 2010

Ice Stream Dynamics



Courtesy of Frank Nitsche

Research Techniques- Multi-beam Bathymetry

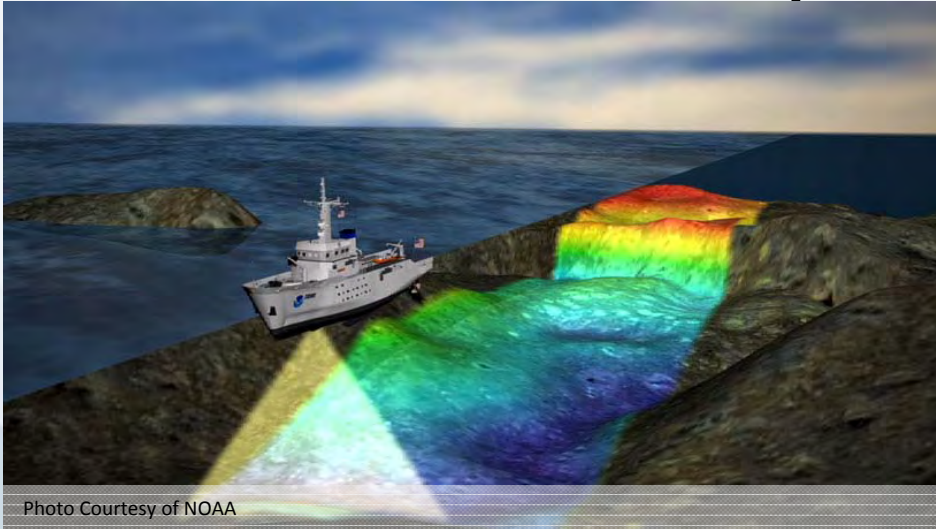


Photo Courtesy of NOAA

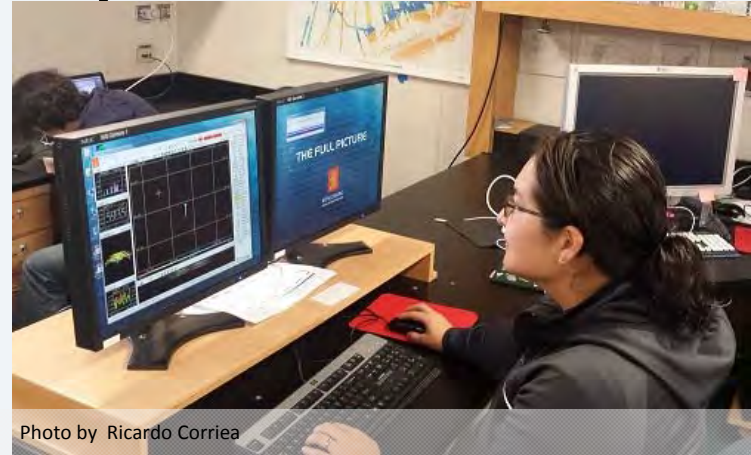


Photo by Ricardo Corriea

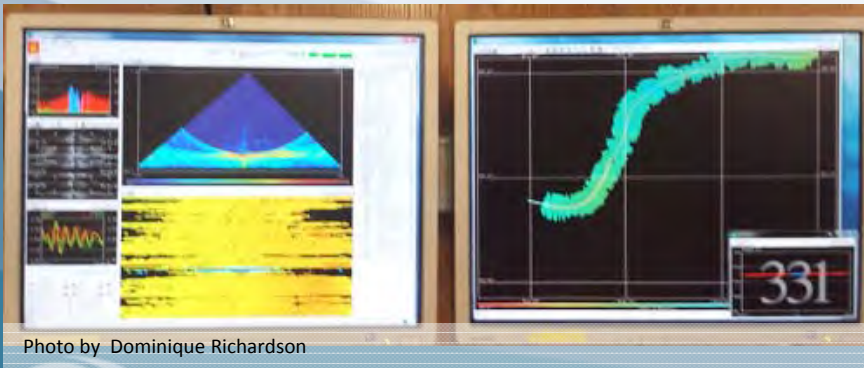


Photo by Dominique Richardson

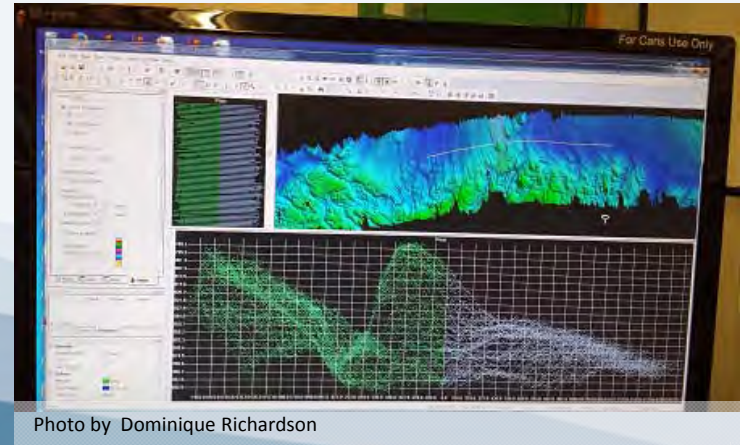


Photo by Dominique Richardson

Research Techniques- CTD

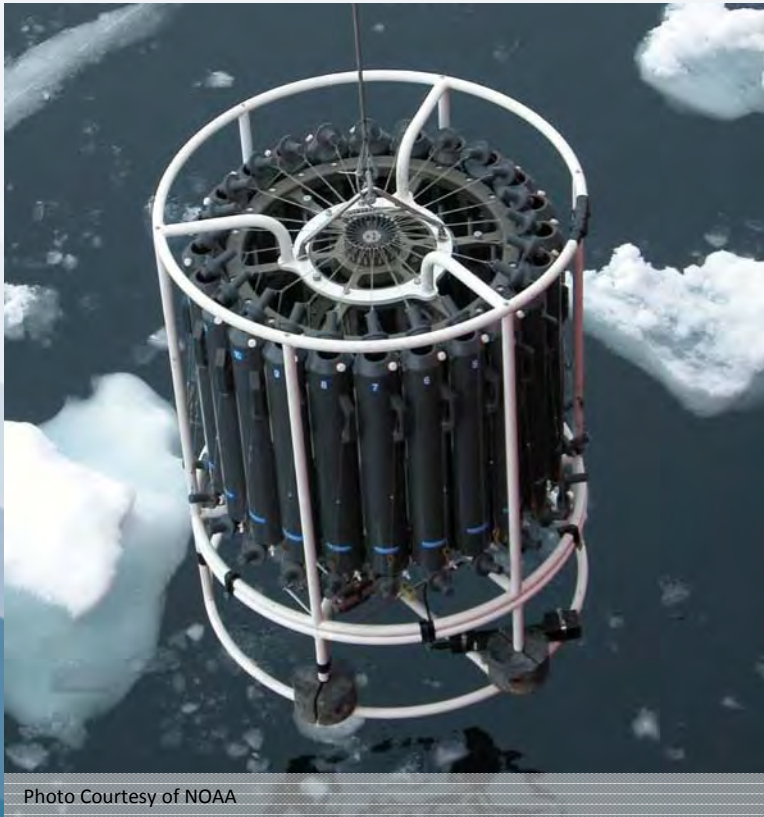


Photo Courtesy of NOAA



Photo by Dominique Richardson



Photo by Dominique Richardson

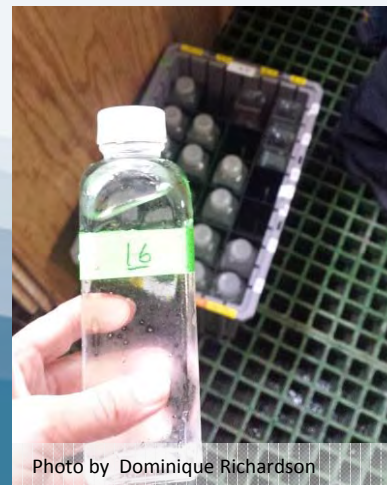


Photo by Dominique Richardson

Research Techniques- Kasten Cores



Sea Ice Survey Research Techniques



Photo by Dominique Richardson



Photo by Dominique Richardson

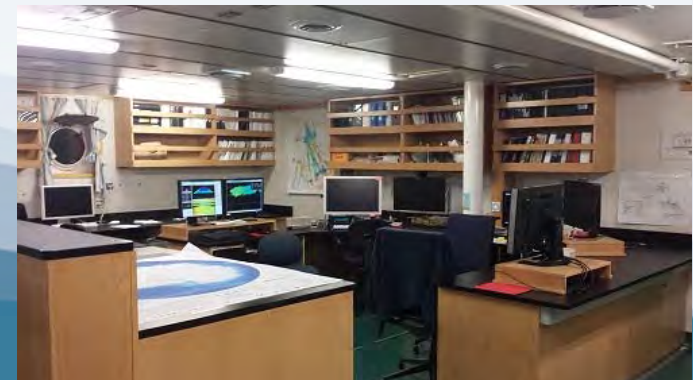
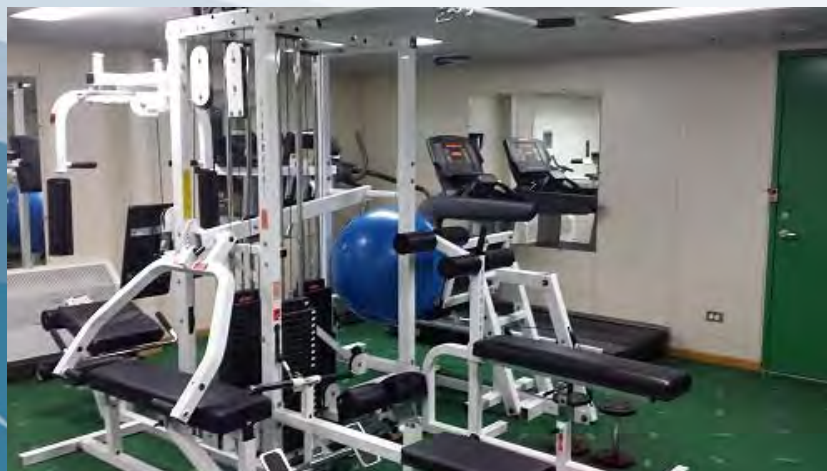


Photo by Dominique Richardson



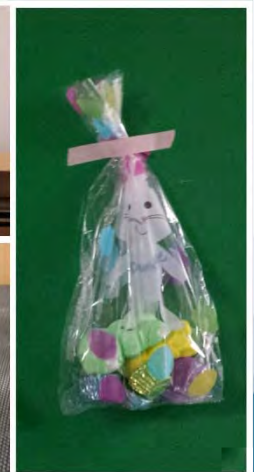
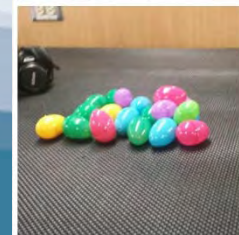
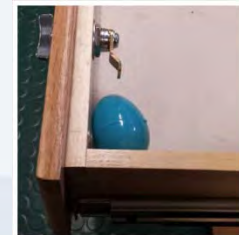
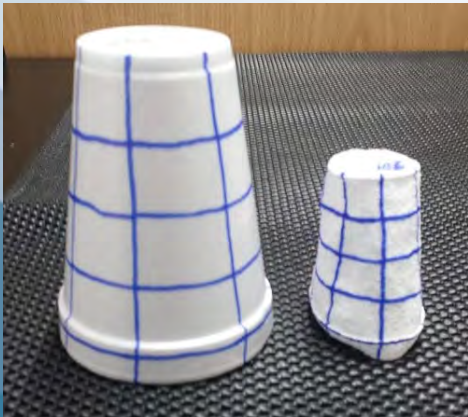
Photo by Dominique Richardson

Life on board



**POLAR
TREC**



Photos by Dominique Richardson



**POLAR
TREC**

Photos by Dominique Richardson

Get Involved!

- There's lots more to come. Follow us:
 - www.polartrec.com/expedition/antarctic-ice-stream-dynamics
 -  Dominique in East Antarctica
 -  @EastAntarctica
- Explore on your own
 - Explore and research topics to learn more
 - Try out simple experiments at home
- Do your part
 - Make changes to reduce your greenhouse gas emissions and waste