



Welcome to Live from IPY!



With PolarTREC Teacher, Katie Pena and the science team aboard the Nathaniel B. Palmer Icebreaker in the Southern Ocean



Thursday, 22 May 2008

8:15 AM ADT [6:15 AM HDT, 9:15 AM PDT, 10:15 AM MDT, 11:15 AM CDT, 12:15 PM EDT]

www.polartrac.com
Drake Passage Opening



Welcome to HorizonWimba



Arctic Research Consortium of the United States

List of all participants

Raise your hand to ask a question

Return to the lobby or exit

Slides will be shown here

If using VOIP, press here to talk

'Chat' with one person or the entire group

The screenshot shows a Wimba webinar interface. At the top is a slide titled "Welcome to HorizonWimba" with the ARCUS logo and "Arctic Research Consortium of the United States". Below the slide is a toolbar with a "TALK" button circled in red. To the right of the toolbar is a "People (3)" list with participants: Janet_Warburton, ronnie, and tina. Below the toolbar is a chat window with messages from tina and Janet_Warburton, and a "Main Room" dropdown menu circled in red. At the bottom right is a navigation bar with "Exit - Lobby - Help" options, also circled in red. Arrows from text labels on the left and right point to these elements.

Please note: Today's event will be recorded and archived at www.polartrec.com.



What is PolarTREC?

PolarTREC is a professional development experience in which K-12 teachers are paired with researchers in authentic polar research experiences.

In the next three years 36 teachers from around the United States will join scientists in the Arctic and Antarctic in celebration of the International Polar Year!

www.polar-trec.com

The PolarTREC Team



Wendy Warnick

PolarTREC PI
Executive Director



Helen Wiggins

Program Coordinator



Janet Warburton

PolarTREC
Project Manager



Kristin Timm

PolarTREC
Project Manager



Katie Breen

PolarTREC
Project Manager



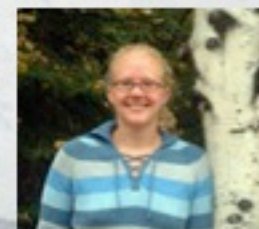
Ronnie Owens

Web Developer



Ben Wade

Web Developer



Tina Buxbaum

Electronic Media
Project Manager



Zeb Polly

Systems Administrator



Joed Polly

Video Production

...with help from
the entire staff at
ARCUS



www.polarrec.com
Drake Passage Opening



International Polar Year (IPY)

2007-2009

The International Polar Year (2007-2009) is an exciting scientific campaign focusing on the world's polar regions!

IPY is a time for discovery, science, learning, and awareness about the polar regions with activities for youth, scientists, and the public.

www.ipy.org

Who are we talking with today?



PolarTREC Teacher

Katie Peña

Zilker Elementary
School
Austin, TX



Researcher

Ian W.D. Dalziel

University of Texas at
Austin
Austin, TX



Researcher

Lawrence Lawver

University of Texas at
Austin
Austin, TX



**Marine Project
Coordinator**

Jenny White

Raytheon Polar Services



Researcher

Marcy Davis

University of
Texas Institute
of Geophysics
Austin, TX



Researcher


Julian Pearce

Cardiff University
Whales

Researcher

Alan Hastie

Cardiff University
Whales

A large, white iceberg with a flat top and jagged edges floats in the ocean. The water is dark grey with small waves. The sky is a clear, pale blue. The iceberg's surface shows some internal textures and shadows.

Thank you Dann Blackwood, USGS
photographer, for the excellent photos he has
shared for the presentation today.

Drake Passage Opening

Goal of the project:

The team is studying the opening of the Drake Passage between South America and Antarctica through a combined marine geophysical survey and geochemical study of dredged ocean floor basalts. Dating the passage's opening is key to understanding the formation of the circum-Antarctic current, which plays a major role in worldwide ocean circulation, and whose formation is connected with growth of the Antarctic ice sheet. The samples that will be collected will be used in various geochemical studies to determine their age and constrain mantle flow beneath the region.

Dates:

April 12-May 27, 2008

Location:

Aboard the Nathaniel B. Palmer Icebreaker in the Southern Ocean

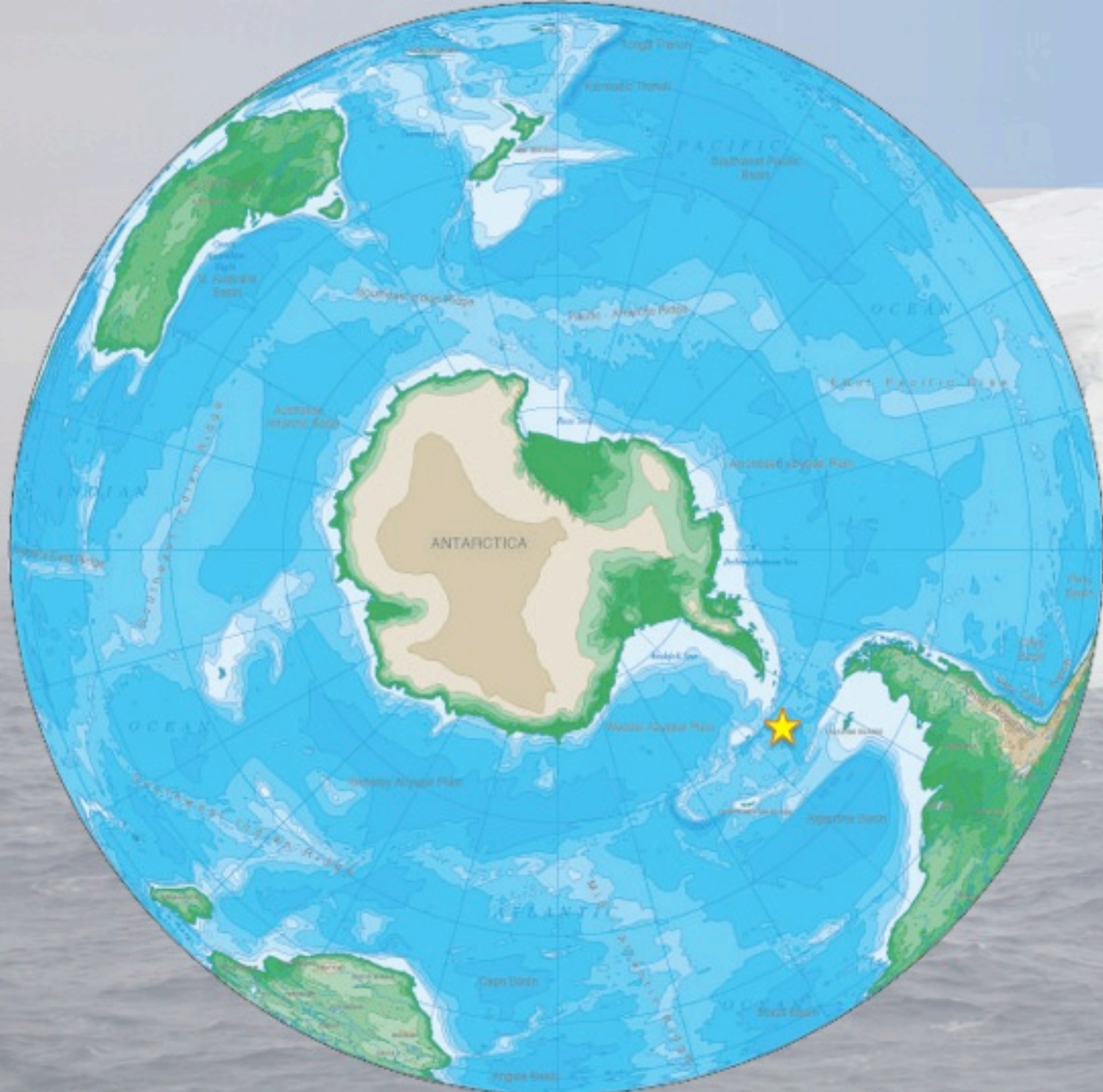


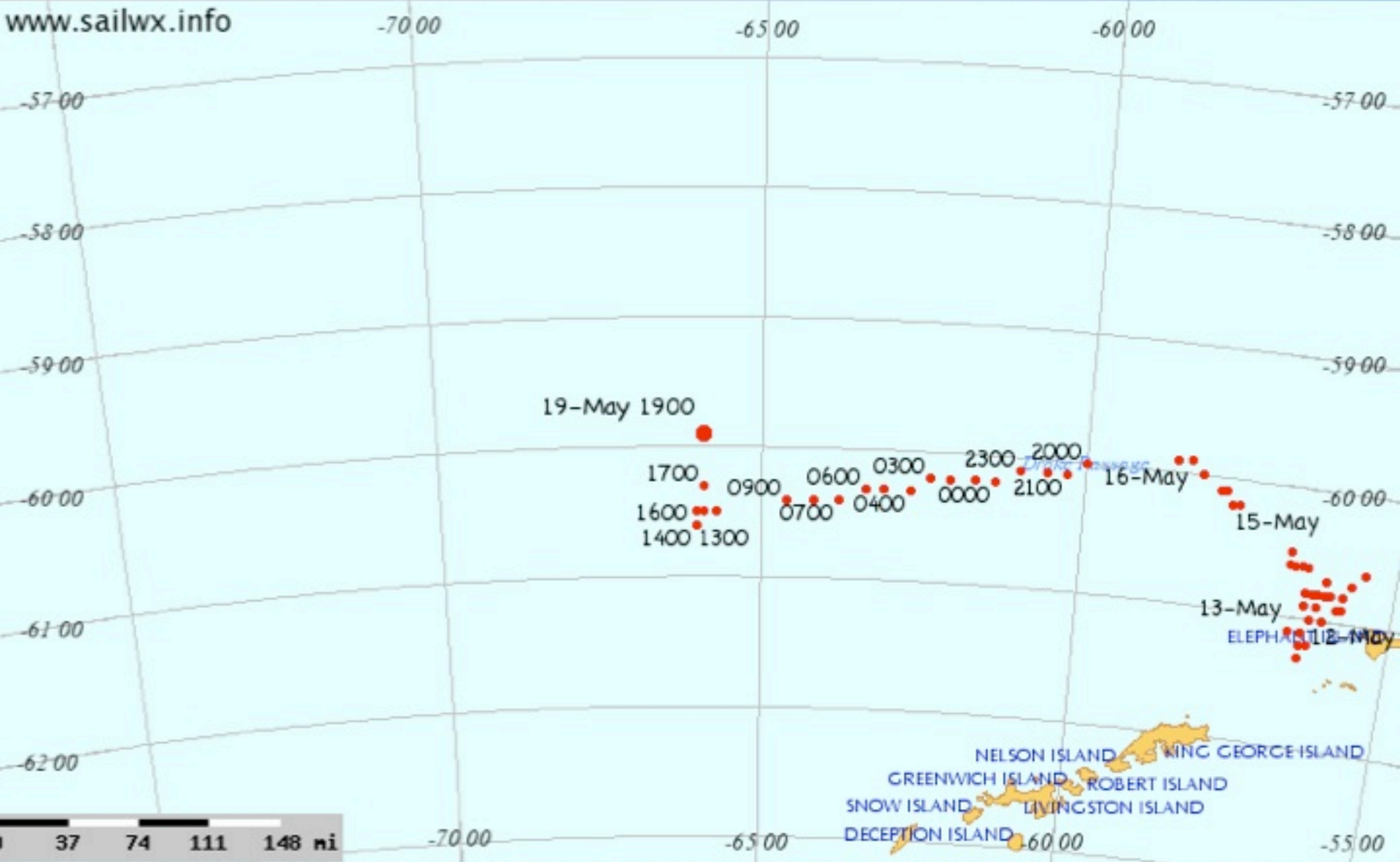
Katie's Trip to Antarctica

- Austin, TX
- Dallas, TX
- Santiago, Chile
- Punta Arenas, Chile

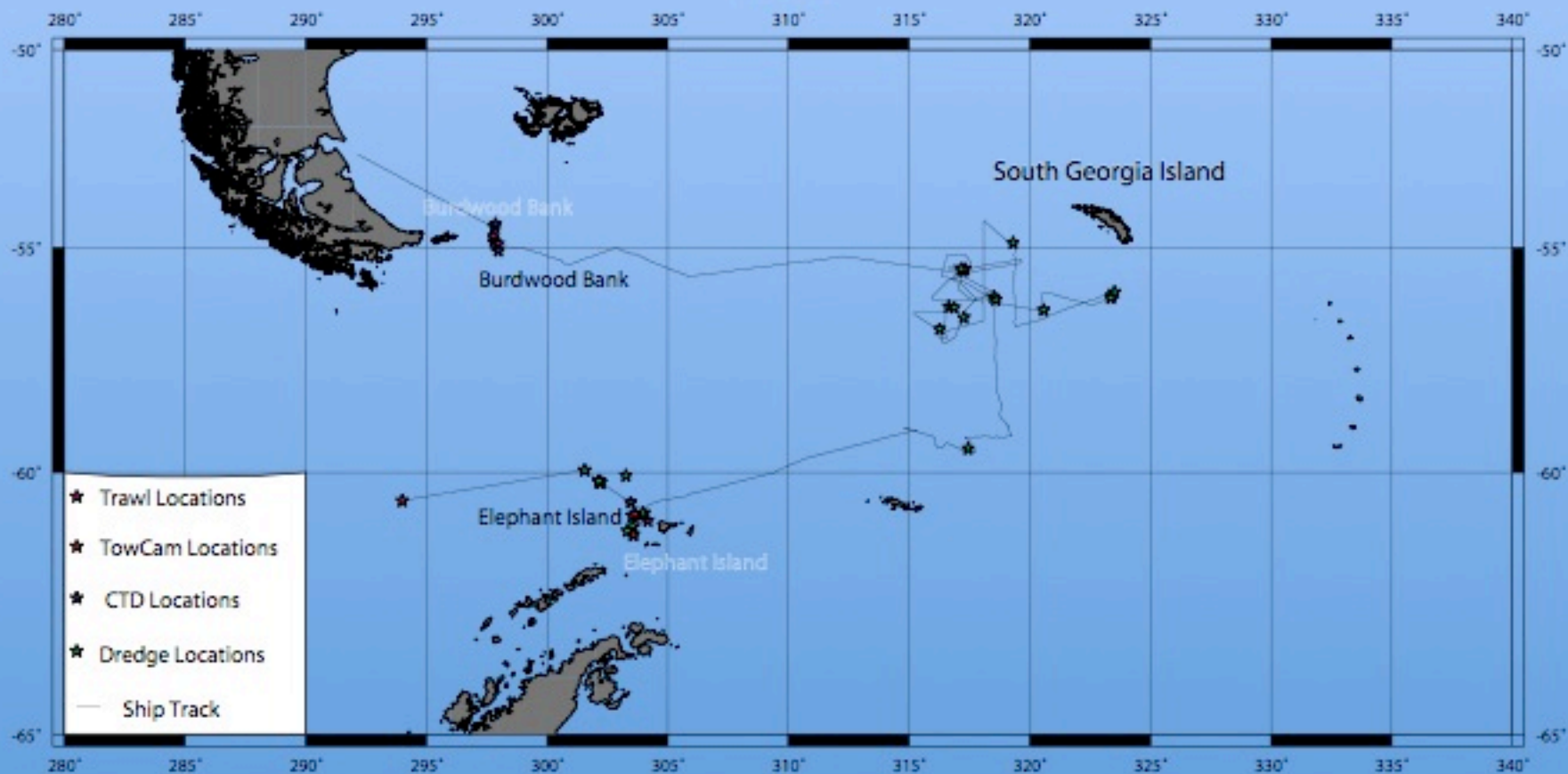
• Board the Nathaniel B. Palmer for shipboard work in the Drake Passage and Southern Ocean







NBP0805

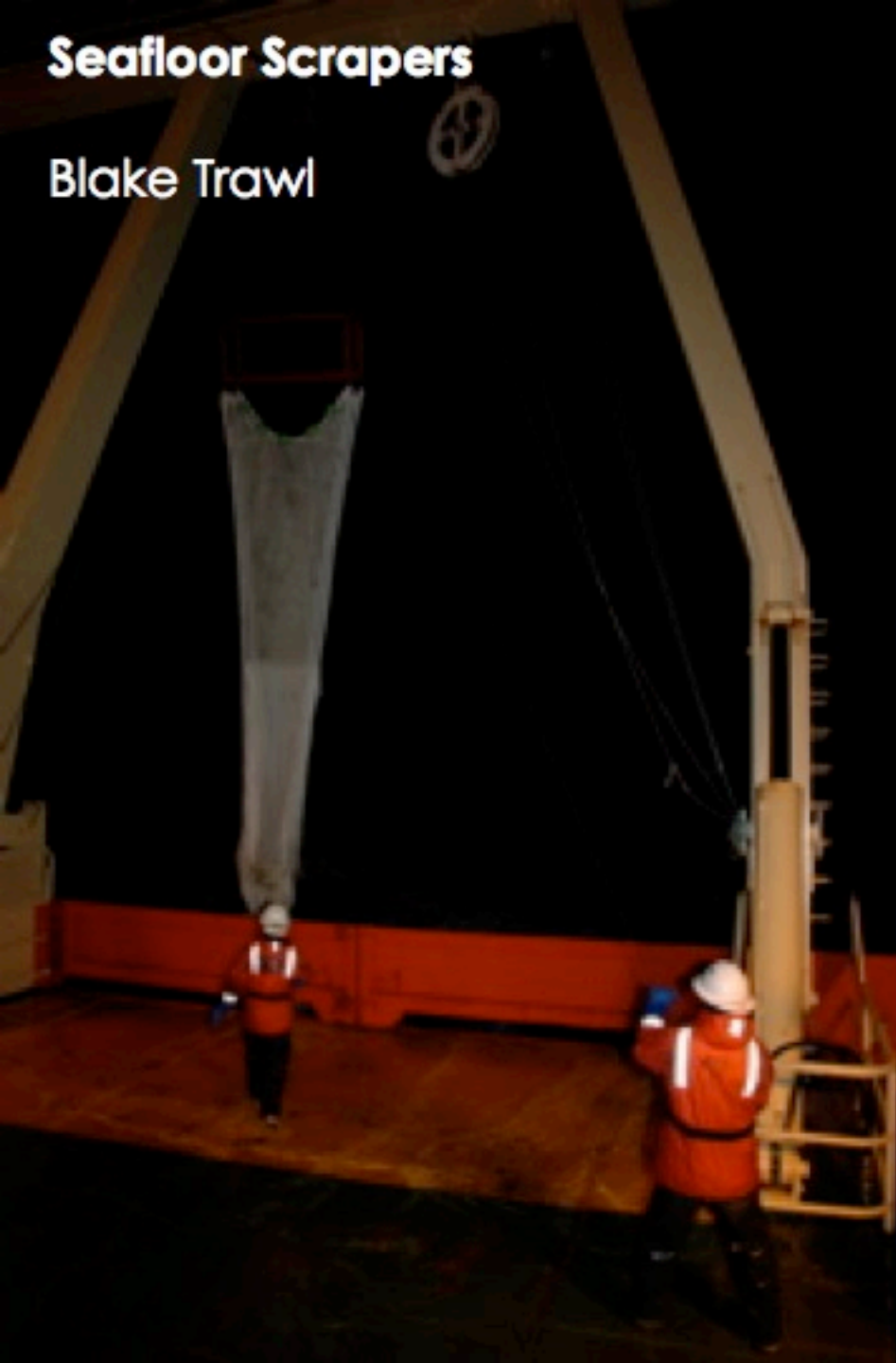


Nathaniel B. Palmer Icebreaker



Seafloor Scrapers

Blake Trawl



Rock Dredge



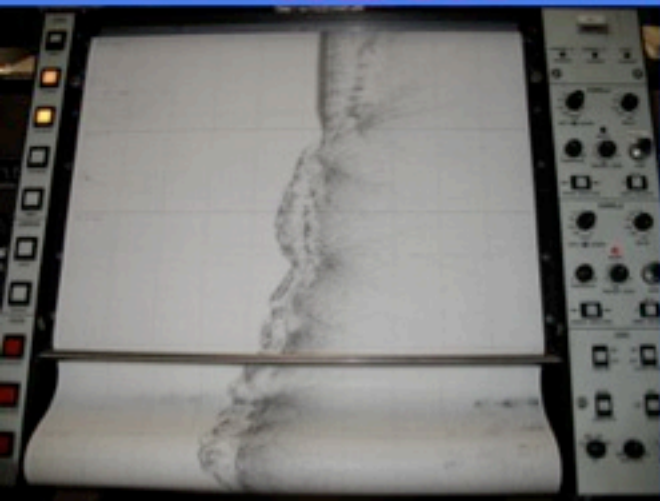
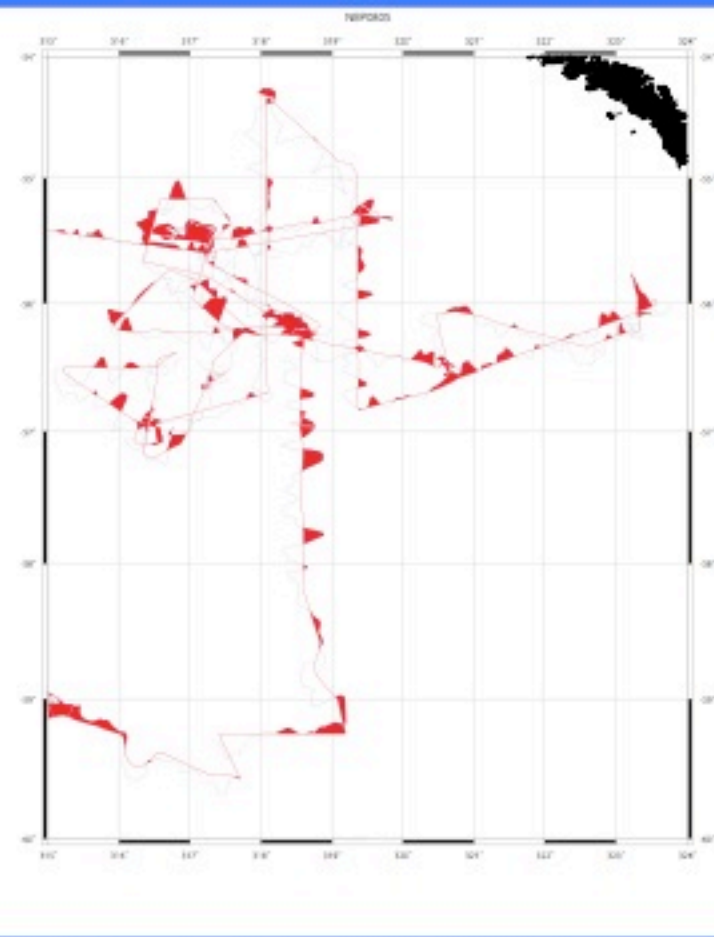


Otter Trawl



Box Dredge





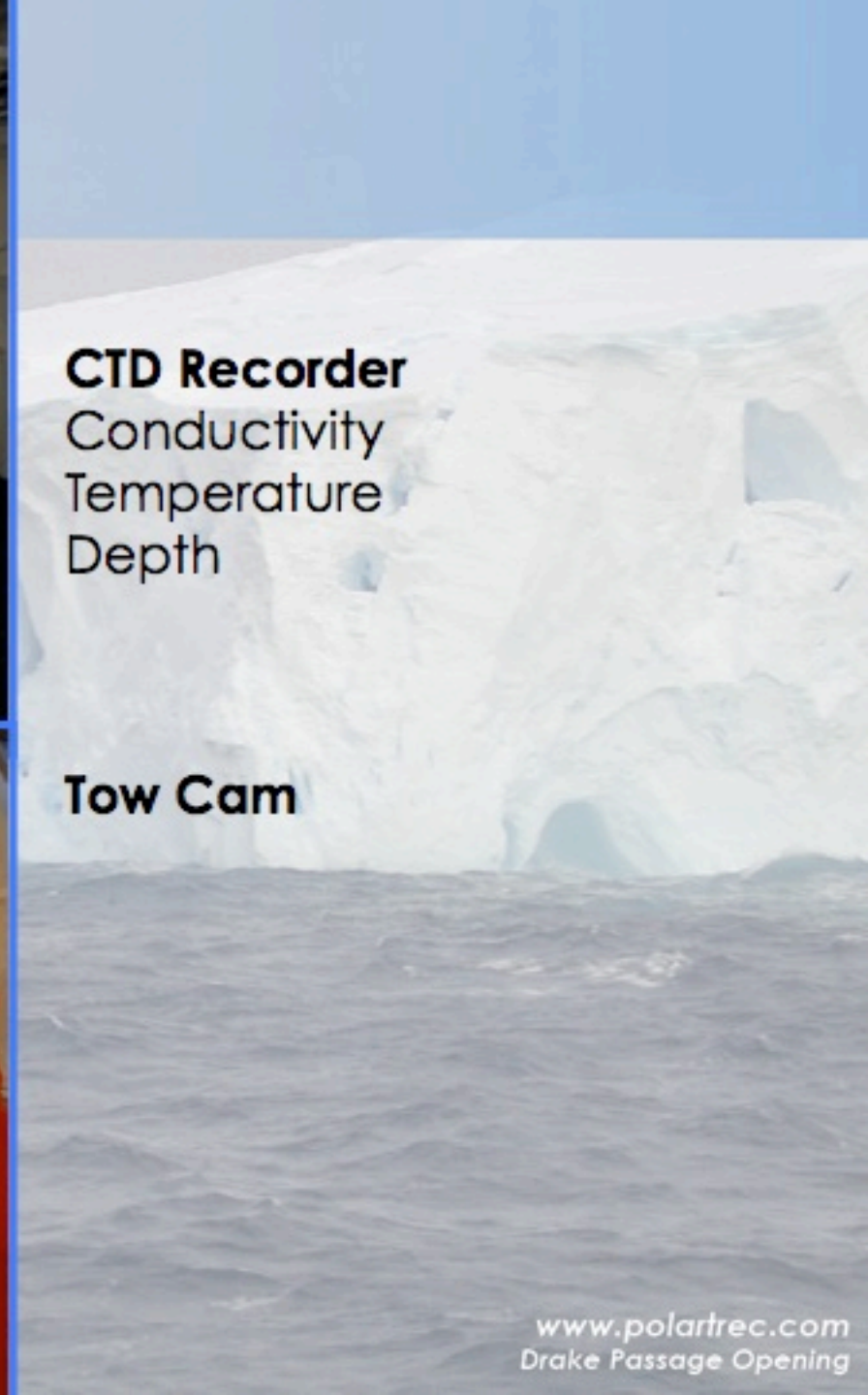
Data Collectors



CTD Recorder
Conductivity
Temperature
Depth

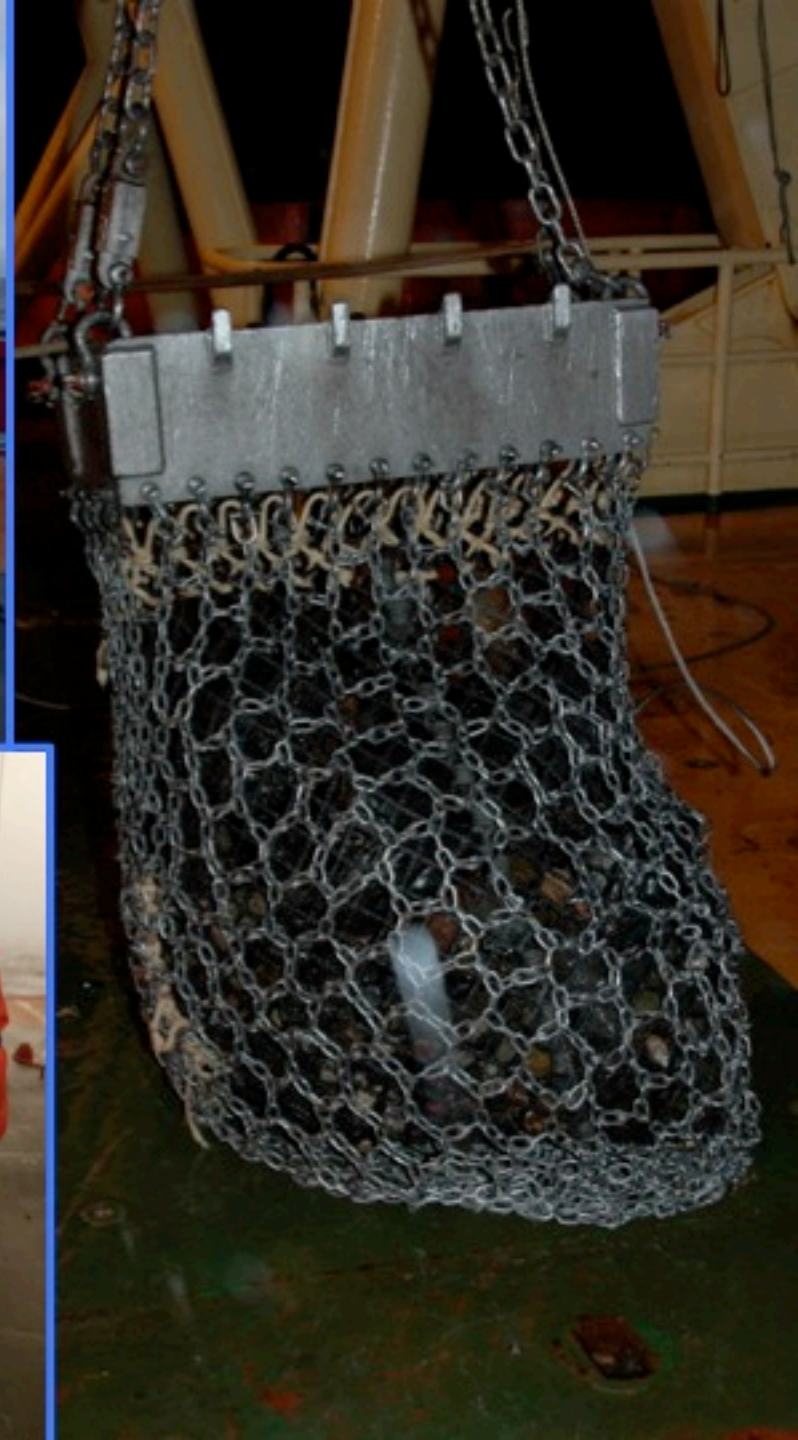


Tow Cam





Dredge Process





Sorting Dredge

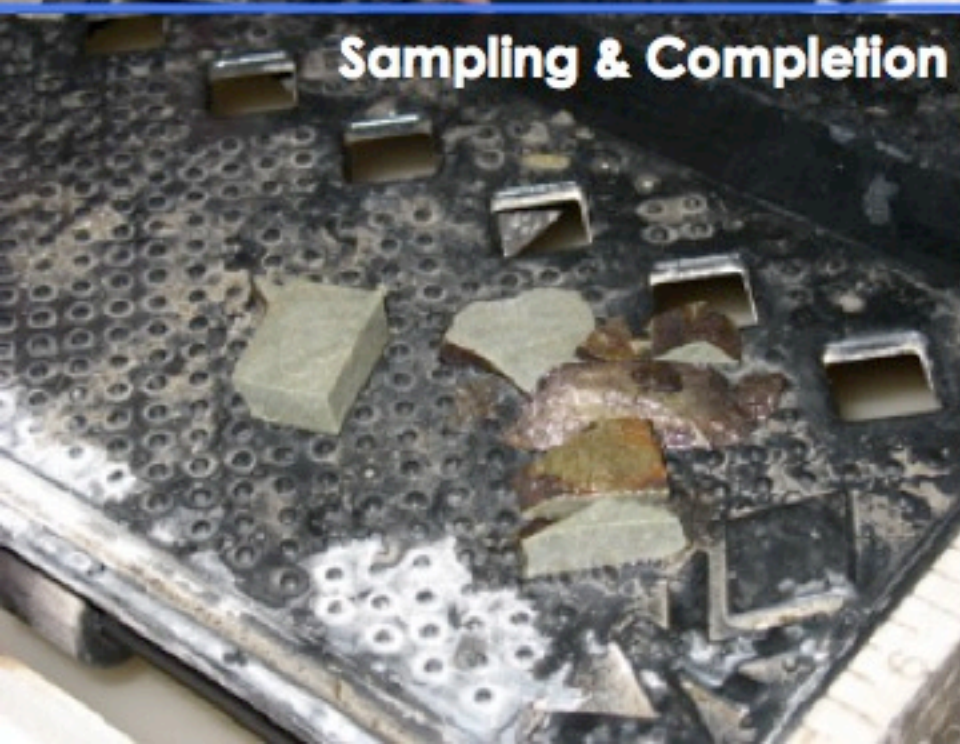




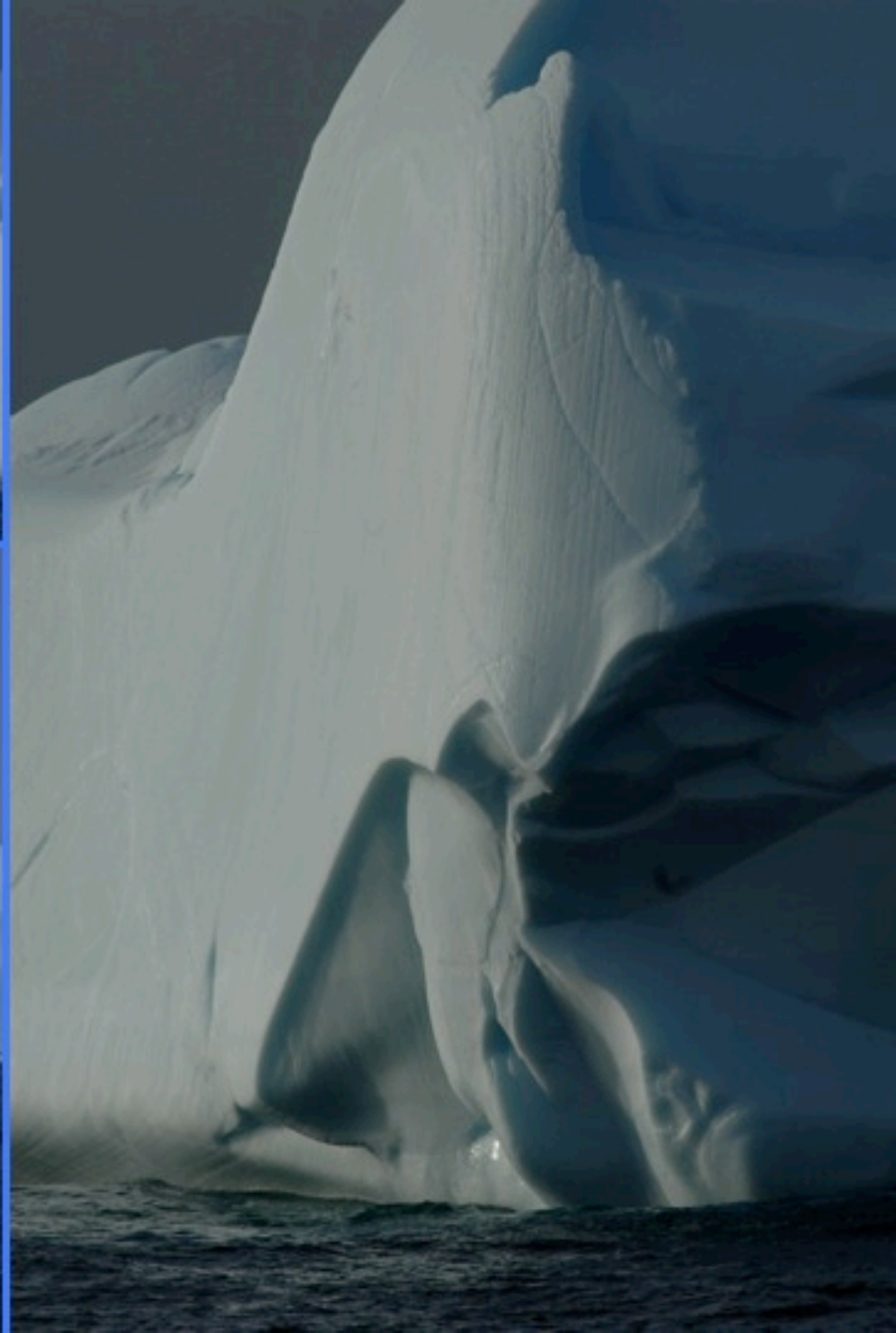
Organizing



Sampling & Completion

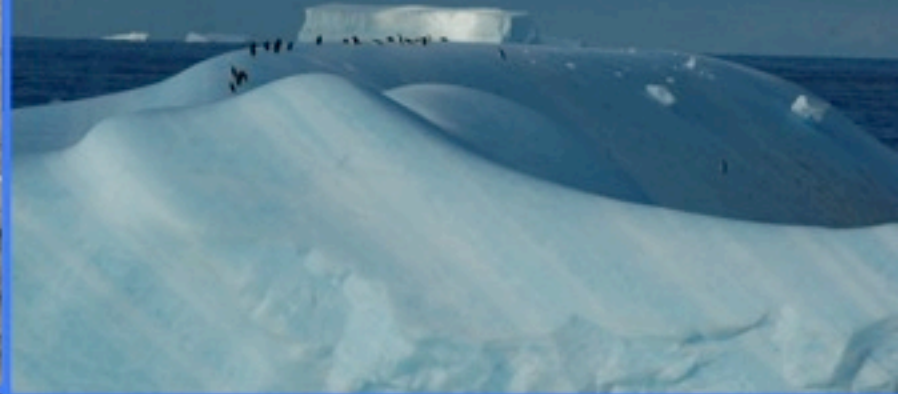


Ice Bergs





Wildlife



Humpback Whale



Chinstrap Penguin



Thank You!



Questions?



Check out and register for upcoming events!



June 18—IPY Day Event: *Land and Life*

July 10 2008—Elizabeth Eubanks in Barrow, Alaska

Register for these events and watch for others at www.polartrec.com!

Thank You!



For more information, please
visit www.polartrec.com

Or Call 907-474-1600

Email: infr@polartrec.com

