



TEACHERS AND RESEARCHERS  
EXPLORING AND COLLABORATING

## Welcome to *PolarConnect*



### Vegetation Impacts on Permafrost 2016

With PolarTREC Teacher Stan Skotnicki  
& Arctic Researcher Mike Loranty

12 July 2016

# Getting to Know Adobe Connect

Slides will be shown here

Exit presentation

Mute your speakers

Raise your hand

List of all participants

Follow the chat

Find out more about the presentation

Chat here



## Participant Introductions

**In the Chat box, please introduce yourself  
by typing in your:**

- ✓ Name
- ✓ School/ Institution
- ✓ The number of students and adults  
participating with you in the same location



TEACHERS AND RESEARCHERS  
EXPLORING AND COLLABORATING

## What is PolarTREC?

PolarTREC is a professional development experience in which K-12 teachers are paired with researchers for 2-6 week research experiences in the polar regions.

Teachers from around the United States will join scientists in the Arctic and Antarctica to learn about science, the polar regions, and to share what they have learned with their students and communities.

# Questions

## During the Presentation:

- Type your question in the text chat box

## At the End of the Presentation:

- Raise your hand with the “hand button”.
- PolarTREC staff will call on you and activate your microphone.
- Speak loud and clear, directly into the computer microphone or the phone to ask your question.



## Introduction

Stan Skotnicki

PolarTREC teacher from Cheektowaga Central School District

Mike Loranty

Department of Geography at Colgate University



Colgate University

CHEEKTOWAGA  
CENTRAL SCHOOL DISTRICT



It's a long way from home

# Northeast Science Station

Life in the field

Cherskiy, Russia





# Northeast Science Station

Life in the field

Cherskiy, Russia



# Northeast Science Station

Life in the field


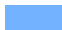
Cherskiy, Russia

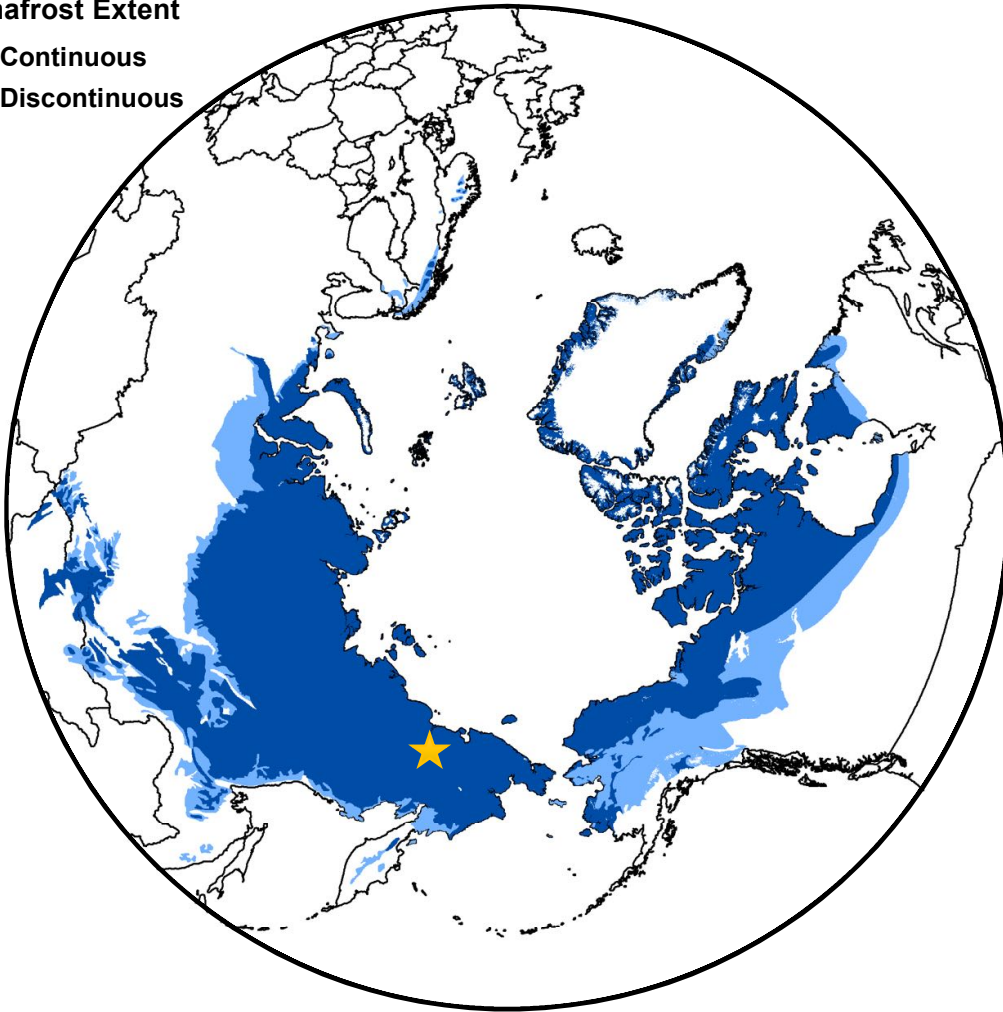




Mosquito central

**Permafrost Extent**

-  Continuous
-  Discontinuous



Where are we studying?

The bright yellow star is where we are located in Siberia at the Northeast Science Station. 68°N, 160°E

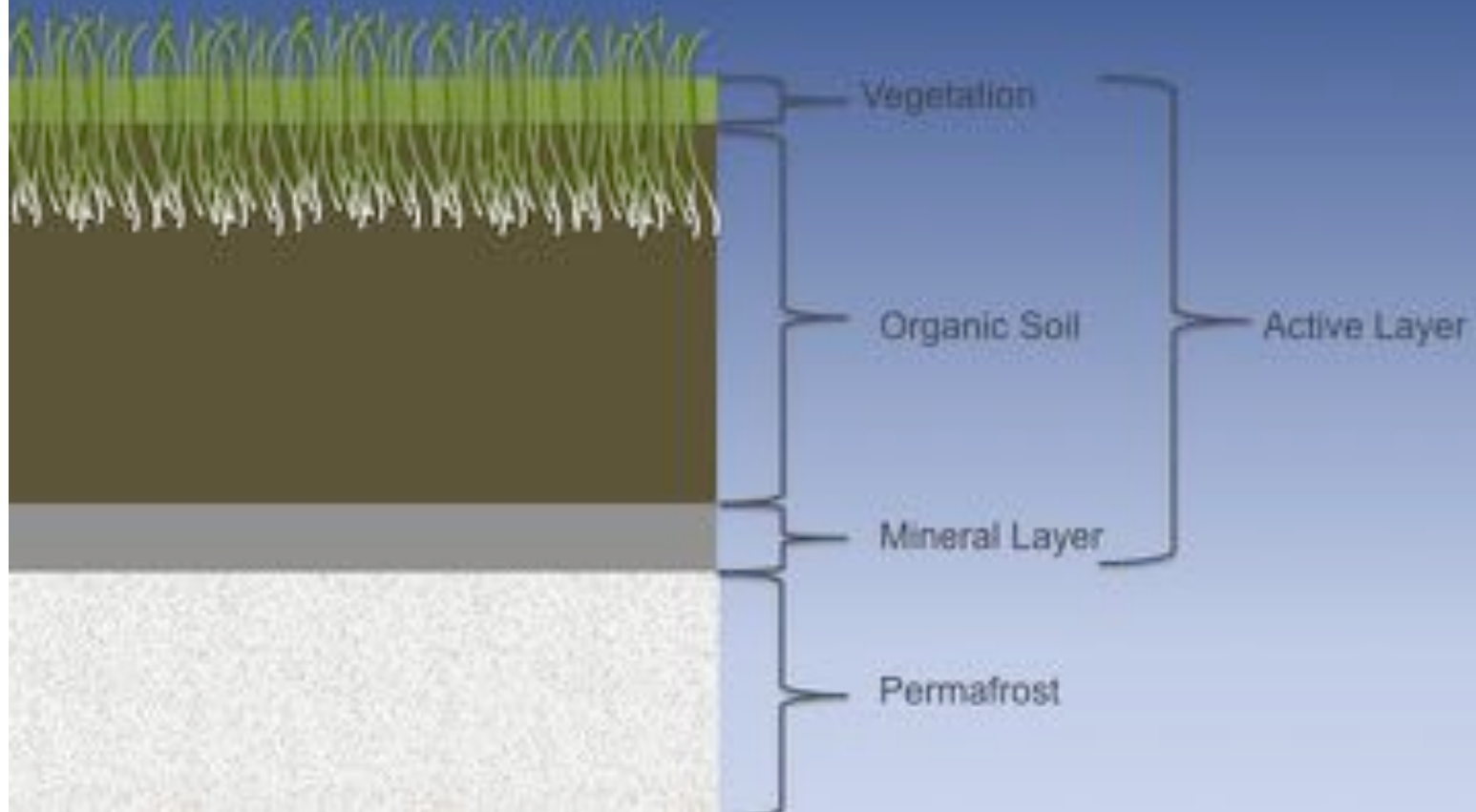
Boreal Forest – Cherskiy, Russia







## Arctic Soil Profile

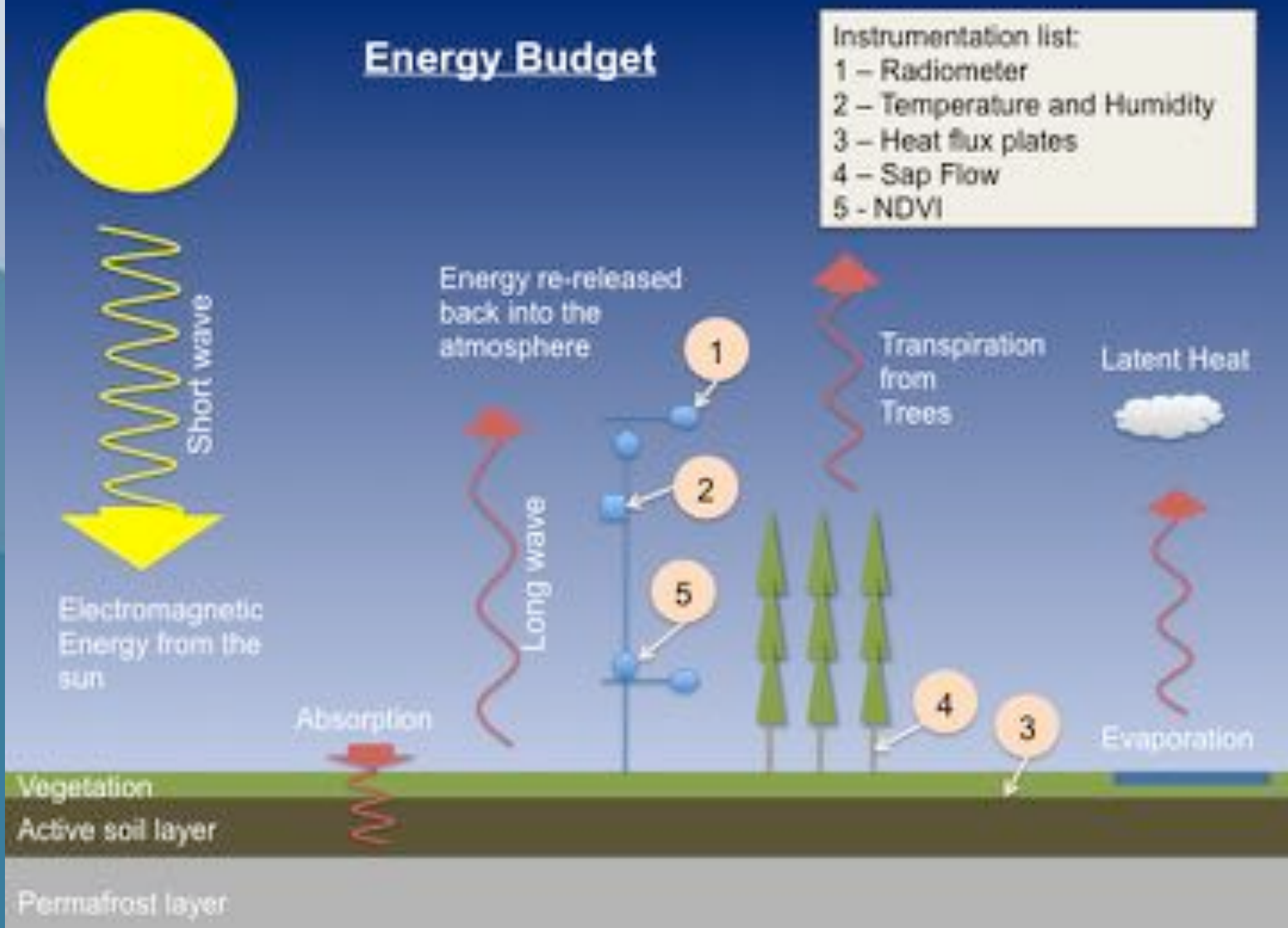






# Energy Budget

- Instrumentation list:
- 1 - Radiometer
  - 2 - Temperature and Humidity
  - 3 - Heat flux plates
  - 4 - Sap Flow
  - 5 - NDVI



Thank you for following



## Photos

Stan Skotnicki and Mark Paricio

## The Crew

M.Loranty, A. Kholodov, S. Natali, A. Tobio, H. Kropp & S. Skotnicki

## Funding

PolarTREC, The National Science Foundation & Colgate University



Colgate University





TEACHERS AND RESEARCHERS  
EXPLORING AND COLLABORATING

# Join PolarTREC!

[www.polartrec.com/about/join](http://www.polartrec.com/about/join)

Everyone can participate in different ways:

- **Following Expeditions**
- **Participate in PolarConnect Events**
- **Join the Polar Education Email List**
- **Check out the great resources**
- **Become a PolarTREC Teacher or Researcher**
- **Become a member of ARCUS**

[www.polartrec.com](http://www.polartrec.com)



TEACHERS AND RESEARCHERS  
EXPLORING AND COLLABORATING

# Thank You!

*An archive of the event will be posted online shortly.*

*<http://www.polartrec.com/polar-connect/archive>*

