

Welcome to *PolarConnect*



Operation IceBridge 2017

With PolarTREC Teacher Adeena Teres
& IceBridge Team Project Manager John Woods

24 April 2017

Getting to Know Adobe Connect

Slides will be shown here

Exit presentation

Mute your speakers

Raise your hand

List of all participants

Follow the chat

Find out more about the presentation

Chat here



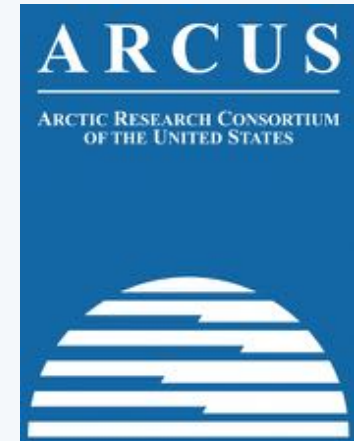
Participant Introductions

**In the Chat box, please introduce yourself
by typing in your:**

- ✓ Name
- ✓ School or Institution
- ✓ The number of students and adults participating with you in the same location

What is PolarTREC?

- Since 2004, the Arctic Research Consortium of the United States (ARCUS), a non-profit organization, has been administering the PolarTREC Program.
- PolarTREC is professional development for K-12 teachers. They are paired with researchers for 2-6 week research experiences in the polar regions.
- Over 150 teachers from around the United States have joined scientists in the Arctic and Antarctica to learn about science, the polar regions, and to share what they have learned with their students and communities.



25 Years of Connecting Arctic Research
www.arcus.org

Questions

During the Presentation:

- Type your question in the text chat box

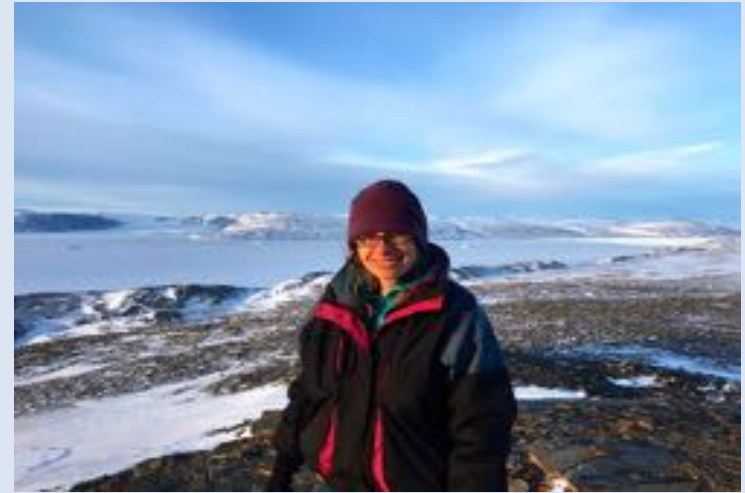
At the End of the Presentation:

- Raise your hand with the “hand button”.
- PolarTREC staff will call on you and activate your microphone.
- Speak loud and clear, directly into the computer microphone or the phone to ask your question.

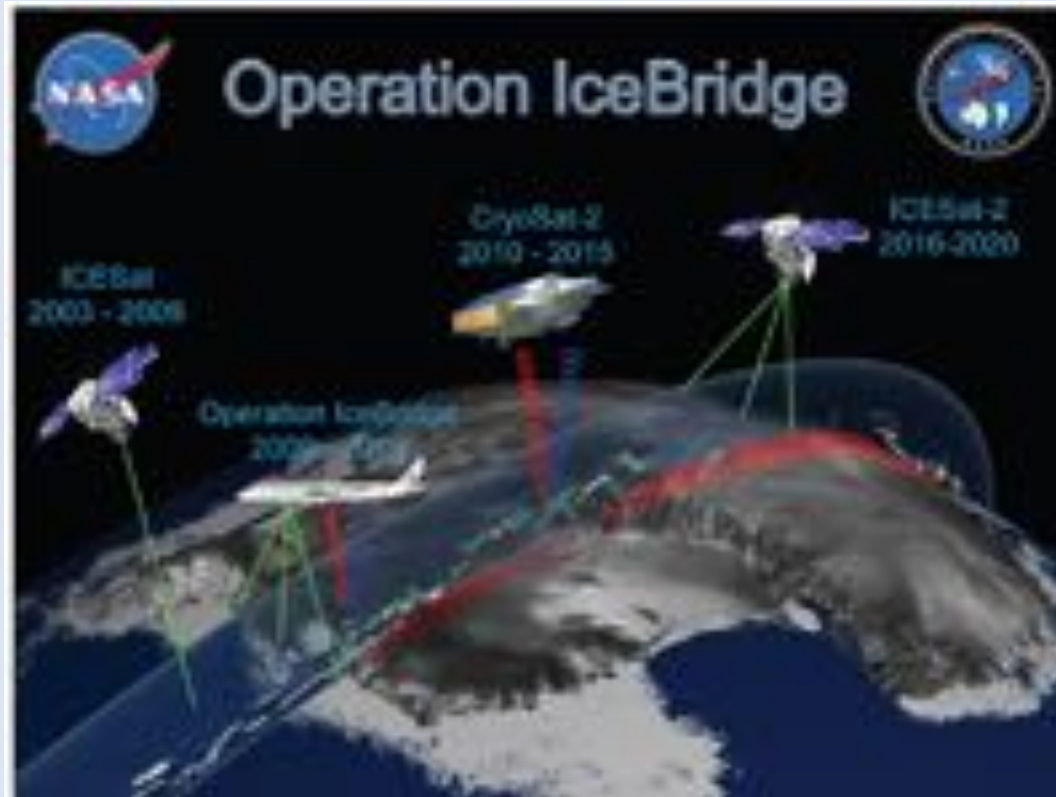
PolarConnect Participants

Welcome to Kangerlussuaq, Greenland

- PolarTrec Teacher: Adeena Teres
Marjory Stoneman Douglas HS
Parkland, FL
- Researcher: John Woods and
Operation IceBridge Artic
Campaign Spring 2017



Operation IceBridge Overview



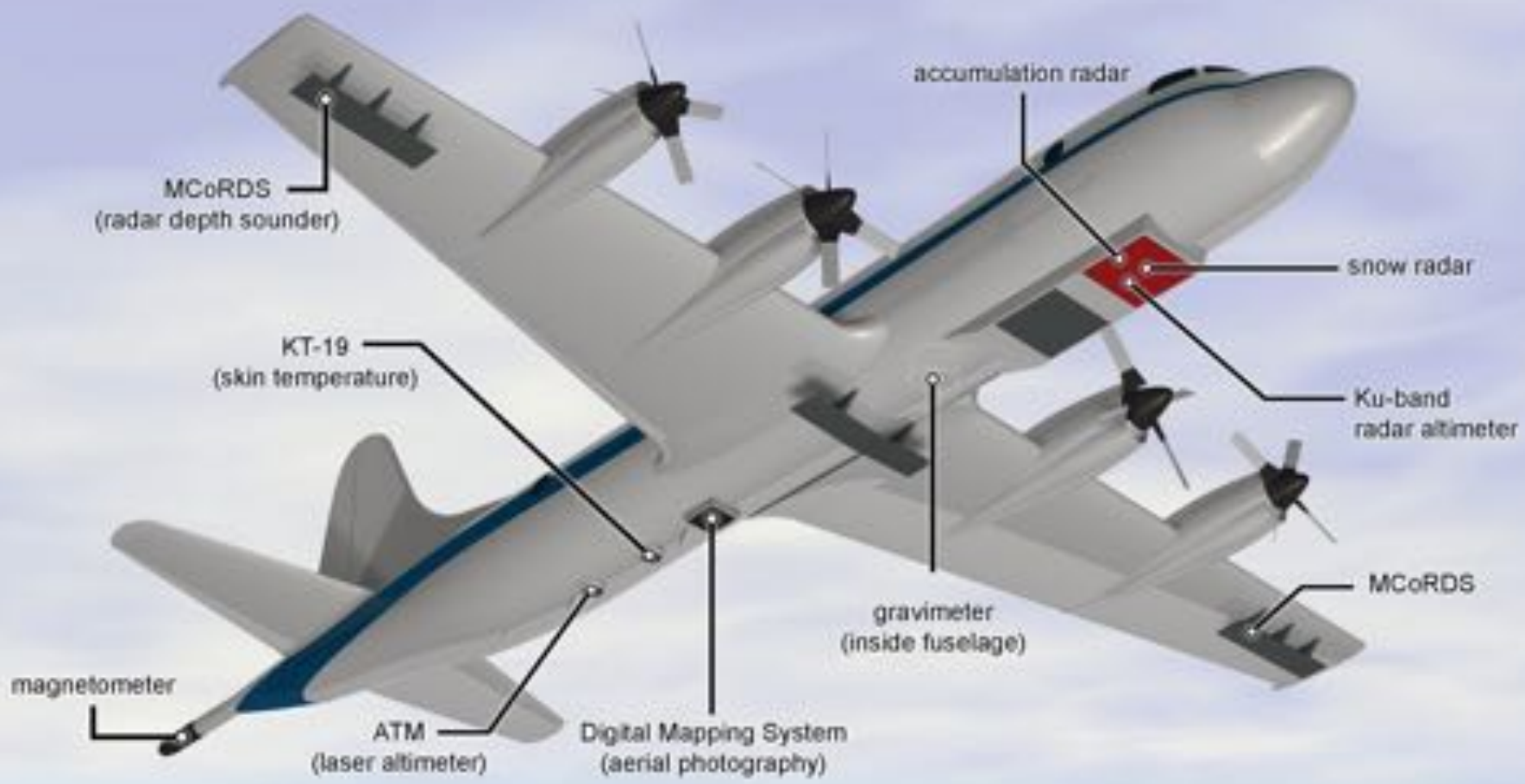
NASA's P3

Our Home in the Sky

- Home Base: Wallops Island VA

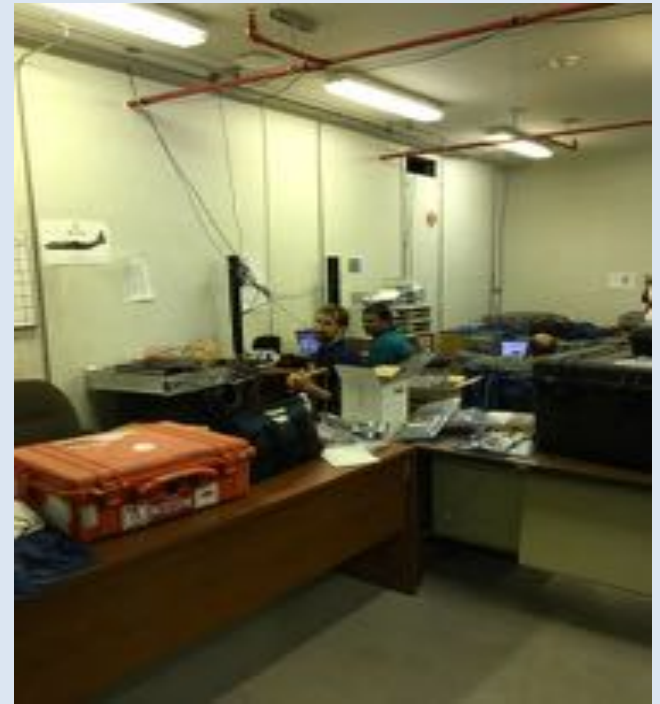




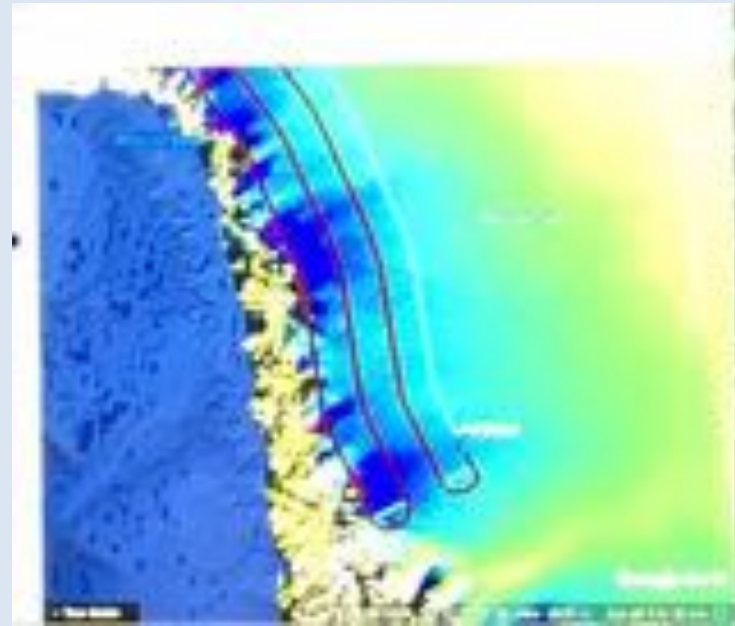
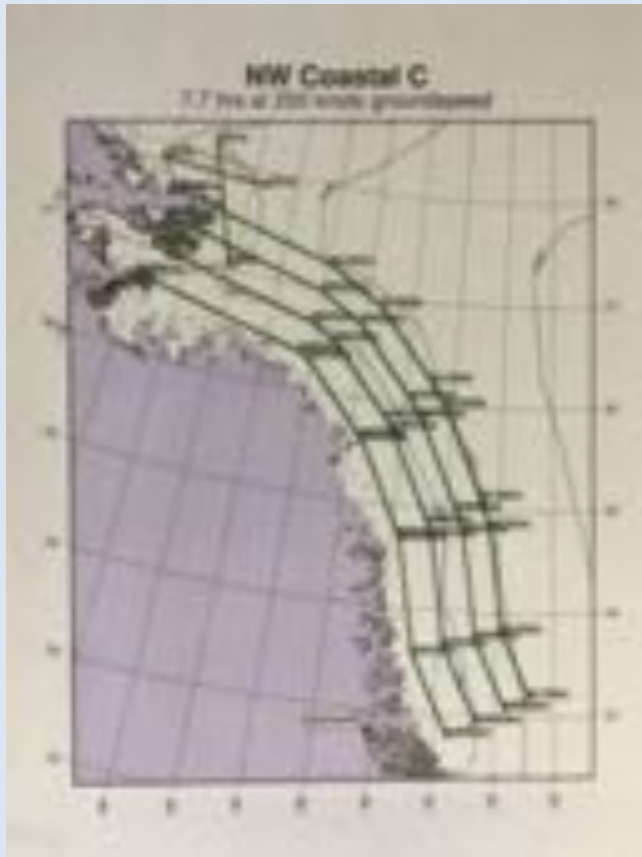


Instruments

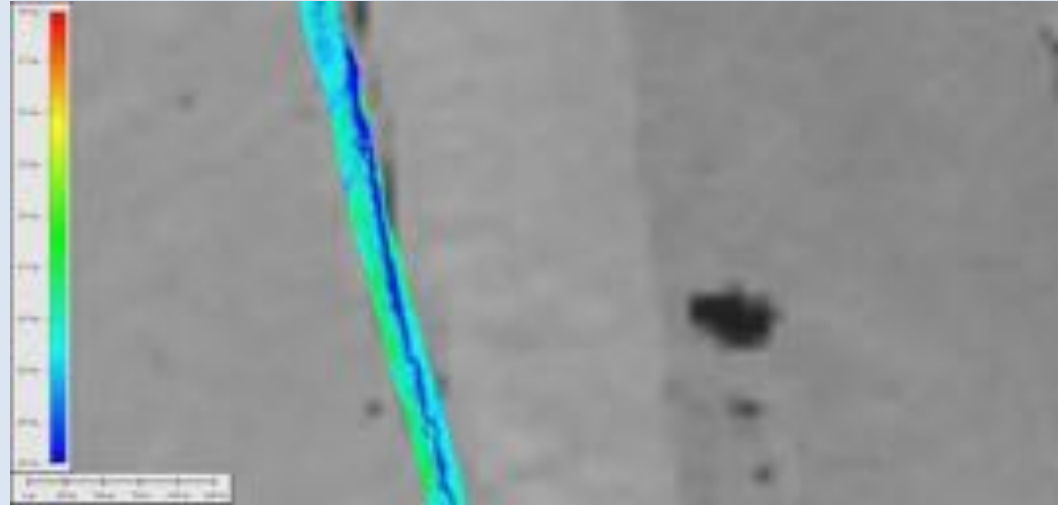
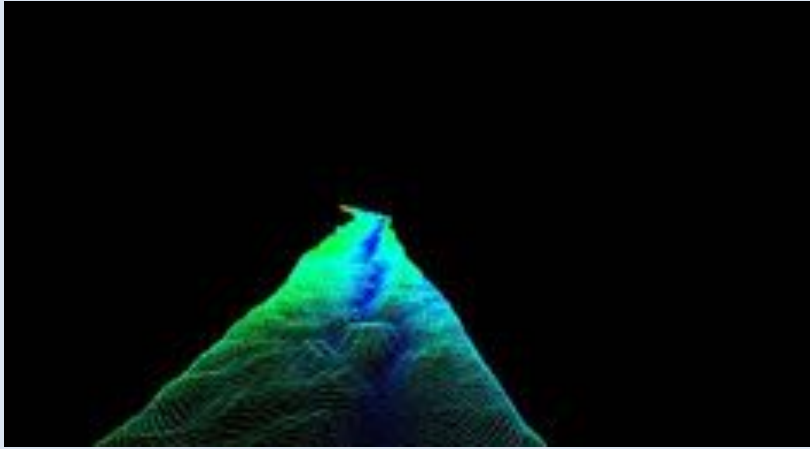
- Digital Mapping System (DMS)
- Airborn Topographic Mapper (ATM)
- FLIR Infrared Camera
- CreSIS Snow Radar
- MCoRDS
- New this year: 360 Camera



First Flight



Petermann Glacier



Life at the Top of the World



View from the Top of the World



My Experiences So Far



What I've Learned So Far



Join PolarTREC!

www.polartrec.com/about/join

Everyone can participate in different ways:

- **Follow Expeditions**
- **Participate in PolarConnect Events**
- **Join the Polar Education Email List**
- **Check out the great resources**
- **Become a PolarTREC Teacher or Researcher**
- **Become a member of ARCUS**

Thank You!

An archive of the event will be available shortly.

<http://www.polar-trec.com/polar-connect/archive>



25 Years of Connecting Arctic Research
www.arcus.org