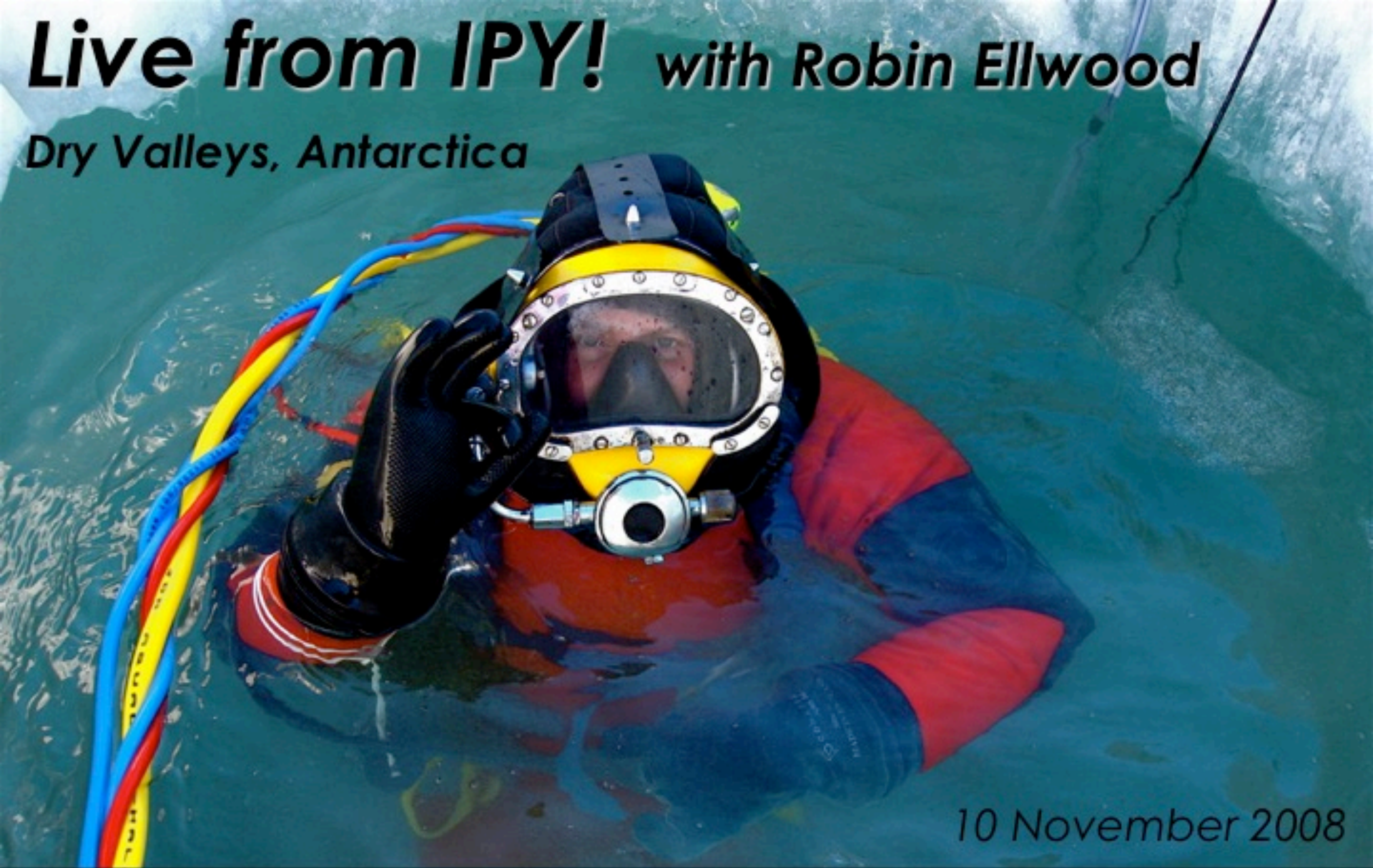


Live from IPY! with Robin Ellwood

Dry Valleys, Antarctica



10 November 2008

Live from IPY! participants: If you are using the phone to join the audio portion of the event, please dial 1-800-315-6338 and when prompted, enter the code 78732#.



Welcome to HorizonWimba



Arctic Research Consortium of the United States

List of all participants

Raise your hand to ask a question

Return to the lobby or exit

Slides will be shown here

If using VOIP, press here to talk

'Chat' with one person or the entire group

The screenshot shows a Wimba webinar interface. At the top, a slide reads "Welcome to HorizonWimba" with the ARCUS logo and "Arctic Research Consortium of the United States" below it. A toolbar contains a "TALK" button, microphone, video, and other icons. A chat window at the bottom left shows a conversation. On the right, a "People (3)" list shows participants: Janet_Warburton, ronnie, and tina. At the bottom right, a navigation bar includes "Exit - Lobby - Help" and the ARCUS logo. Red circles highlight the "TALK" button, the chat window, the "People" list, and the "Exit - Lobby - Help" menu. Arrows point from text labels to these elements.

Please note: Today's event will be recorded and archived at www.polartrec.com.



What is PolarTREC?

PolarTREC is a professional development experience in which K-12 teachers are paired with researchers in authentic polar research experiences.

In the next three years over 40 teachers from around the United States will join scientists in the Arctic and Antarctica in celebration of the International Polar Year!

www.polar trec.com

The PolarTREC Team



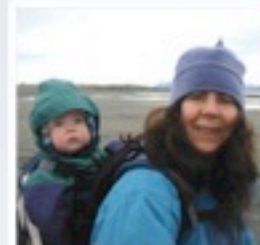
Wendy Warnick

PolarTREC PI
Executive Director



Helen Wiggins

Program Coordinator



Janet Warburton

PolarTREC
Project Manager



Kristin Timm

PolarTREC
Project Manager



Ronnie Owens

Web Developer



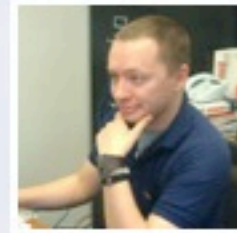
Ben Wade

Web Developer



Tina Buxbaum

Electronic Media
Project Manager



Zeb Polly

Systems Administrator



Joed Polly

Video Production

...with help from the
entire staff at ARCUS





International Polar Year (IPY) **2007-2009**

The International Polar Year (2007-2009) is an exciting scientific campaign focusing on the world's polar regions!

IPY is a time for discovery, science, learning, and awareness about the polar regions with activities for youth, scientists, and the public.

www.ipy.org

Who are we talking with today?



PolarTREC Teacher

Kirk Beckendorf
Blanco Middle School
Blanco, TX



Researcher

Jonas Asuma
University of
Wisconsin- Madison



Researcher

George Weidner
University of
Wisconsin- Madison



Researcher

Jonathan Thom
University of
Wisconsin- Madison



Researcher

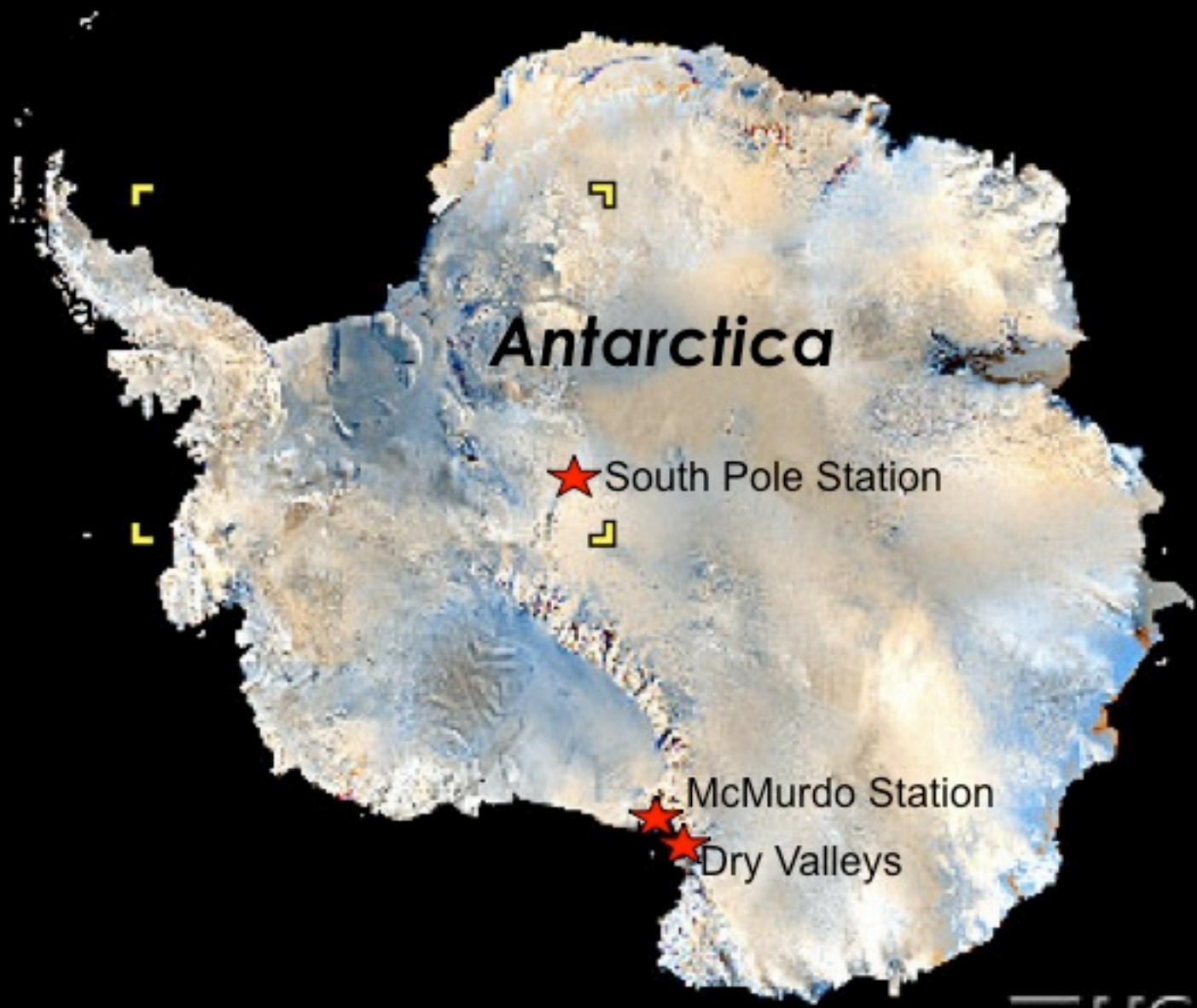
Shelley Knuth
University of
Wisconsin- Madison

Lake Ecosystems in Antarctica



The McMurdo Dry Valleys Long-term Ecological Research (LTER) project is an interdisciplinary study of the aquatic and terrestrial ecosystems in a cold desert region of Antarctica.

Dr. Doran studies the lakes of the Dry Valleys. His team collects long-term data on the physical and chemical conditions within the lakes and relates them to biological diversity and processes. Ms. Ellwood will be part of a SCUBA diving crew working under the lake ice to collect information about the conditions on the bottom of the lake (benthos).



Antarctica

★ South Pole Station

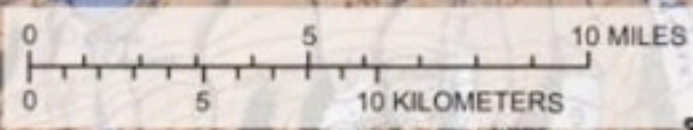
★ McMurdo Station

★ Dry Valleys

375 mi







RA
NG
GE
Oberlin Mountain

Lake House
Camp-hut

Blood Falls

Lake Bonney, West
Lobe of Bonney

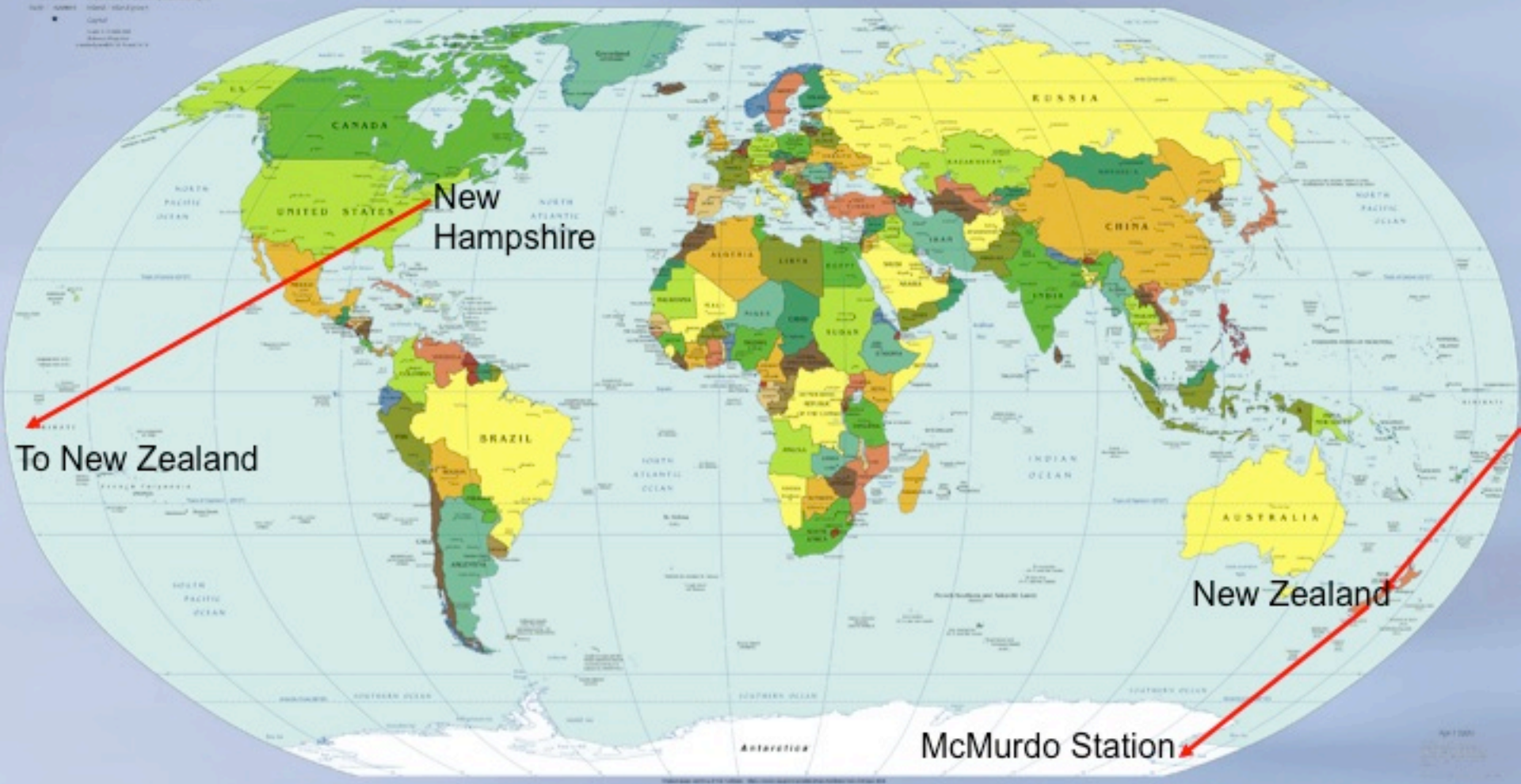
Lake Bonney
Camp



Where is Ms. Ellwood and the Team?

Political Map of the World, April 2006

Scale: 1:100,000,000
Legend:
Country boundaries
Capital
Major cities
Sea level
Elevation: 0-1000m
1000-2000m
2000-3000m
3000-4000m
4000-5000m
5000m+



New Hampshire

To New Zealand

New Zealand

McMurdo Station



Antarctic Digital Coastline: Antarctic Digital Database, 2000
US Digital Outline: ESRI

The McMurdo Long Term Ecological Research Project (LTER)



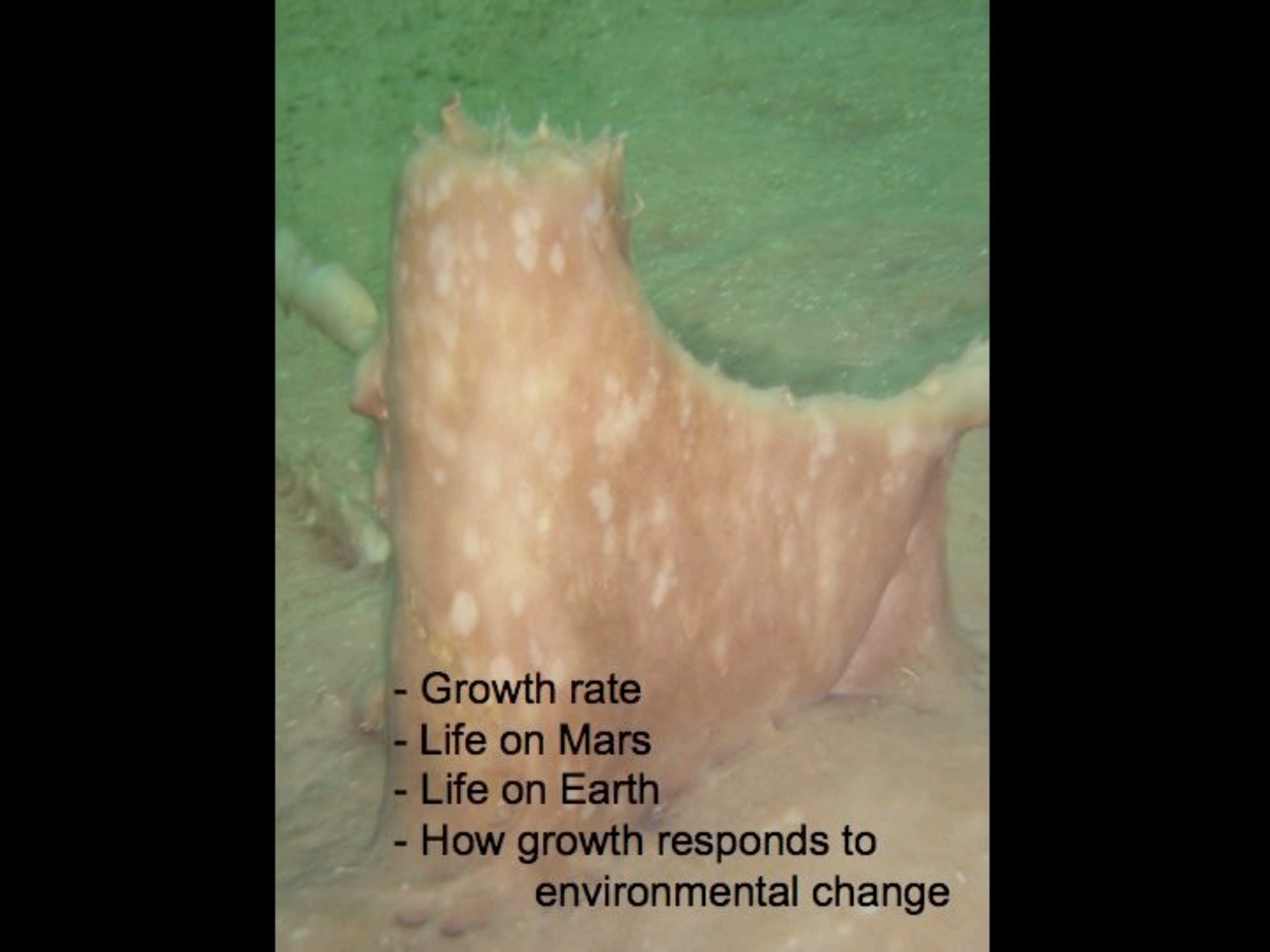


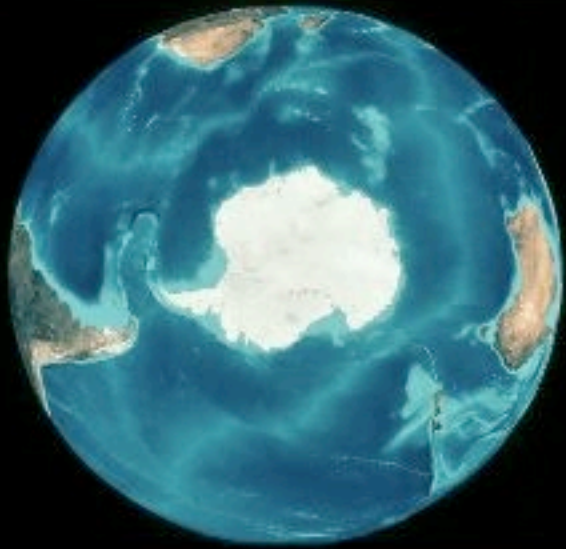
Hilke

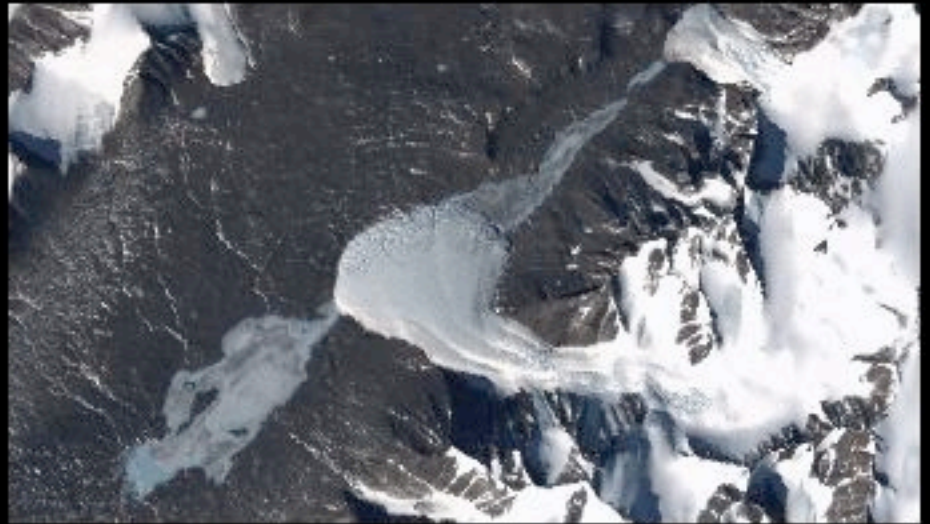
Ian

Aslan

Robin

- 
- Growth rate
 - Life on Mars
 - Life on Earth
 - How growth responds to environmental change



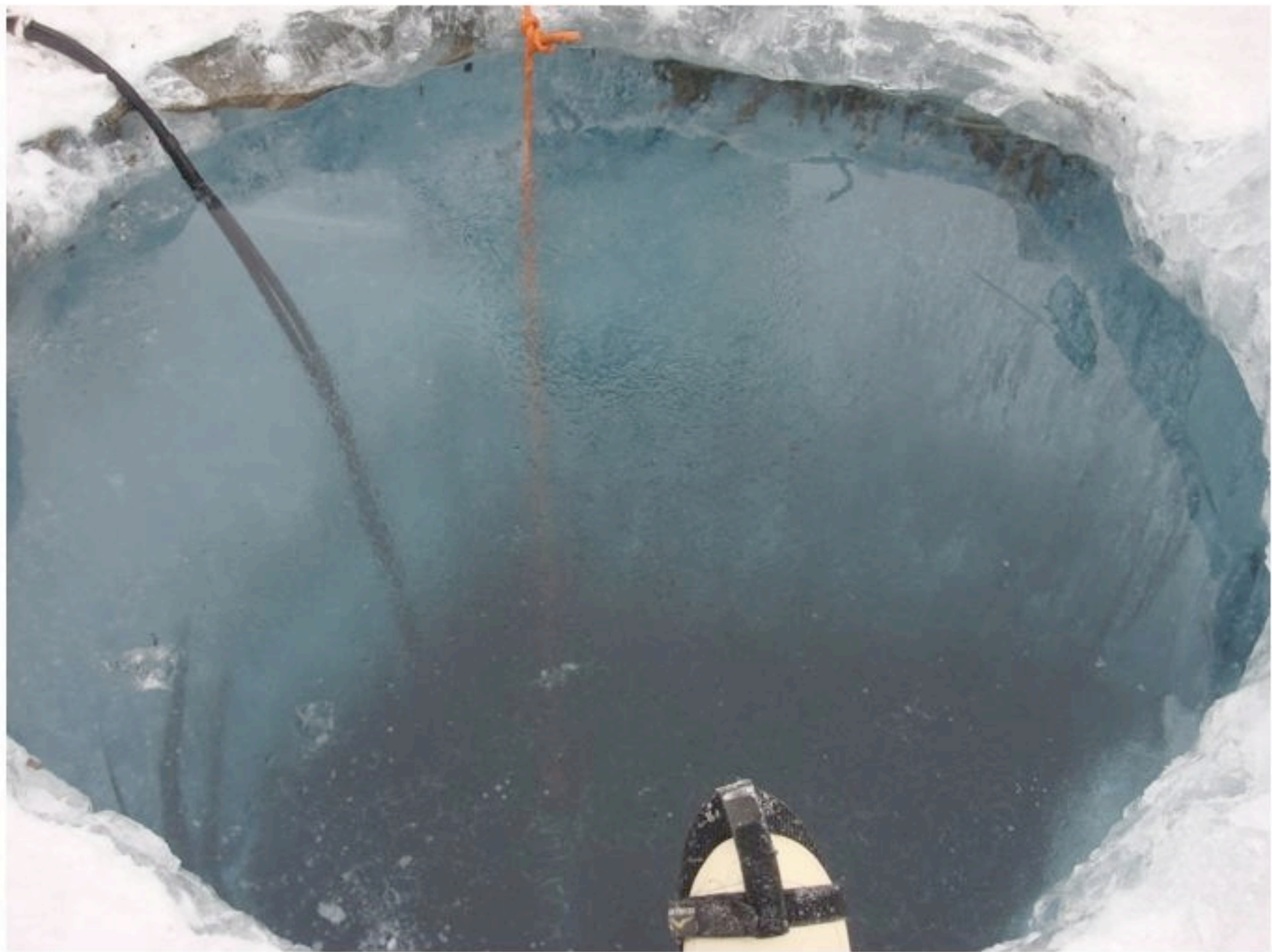












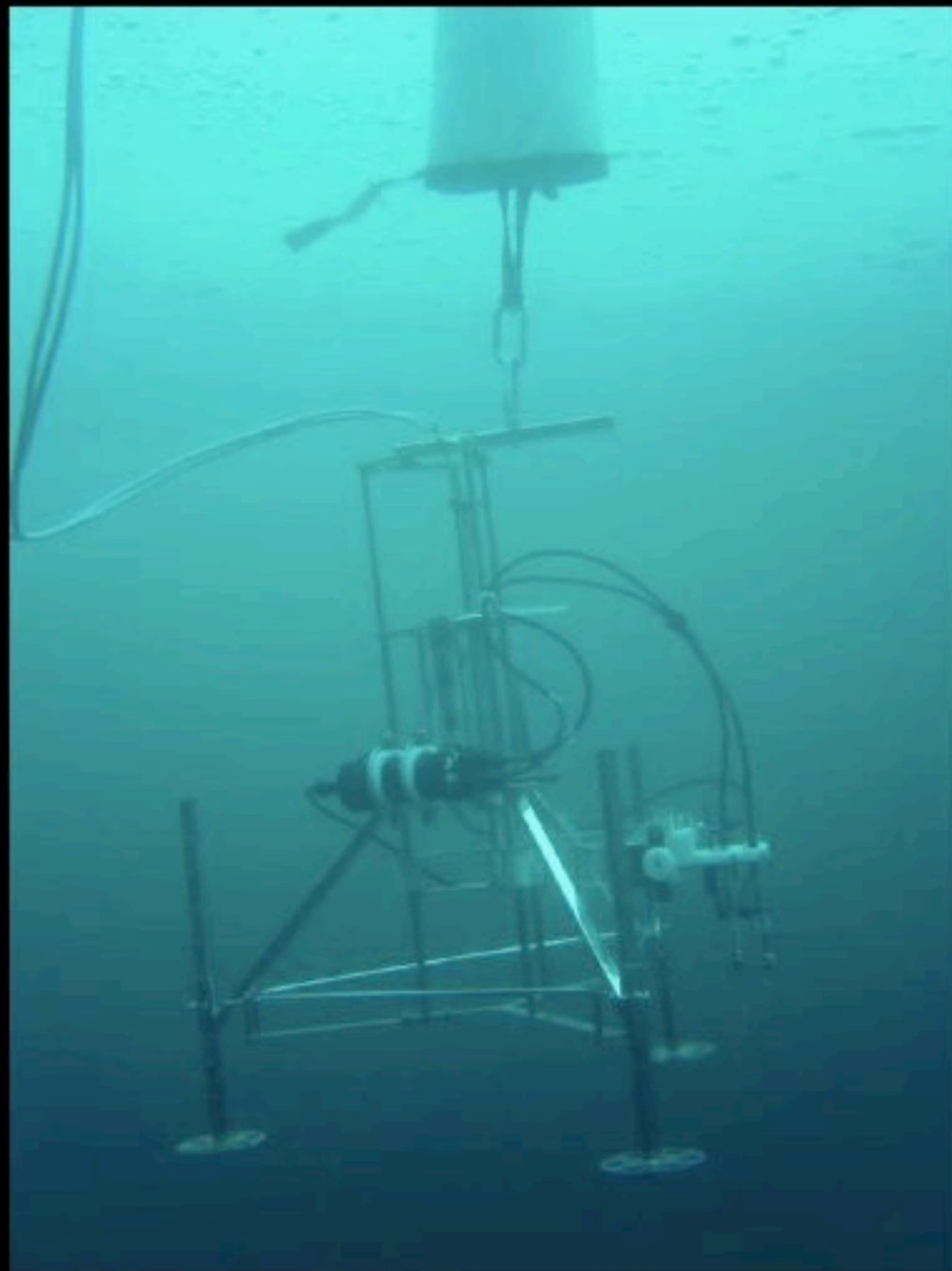


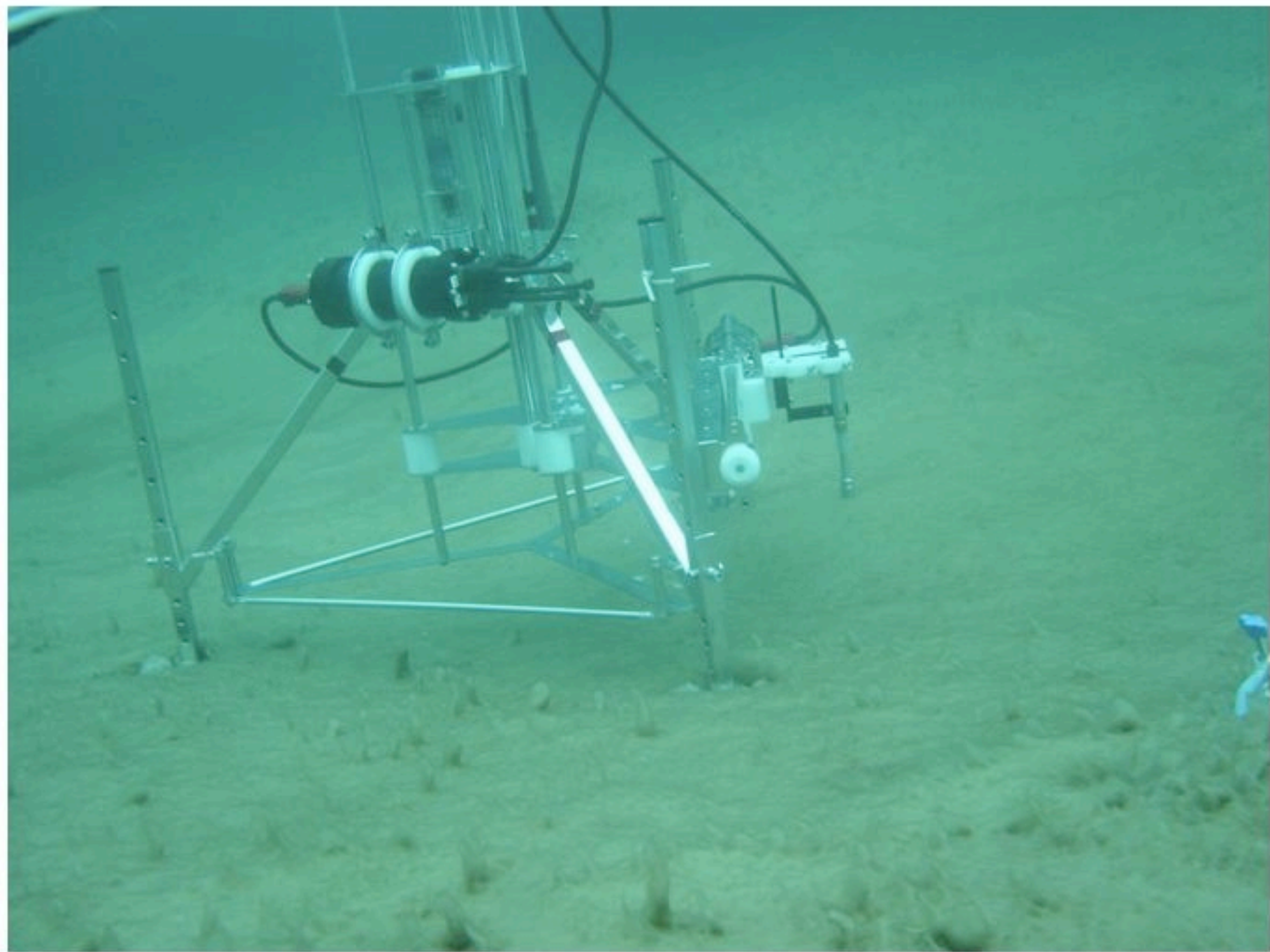






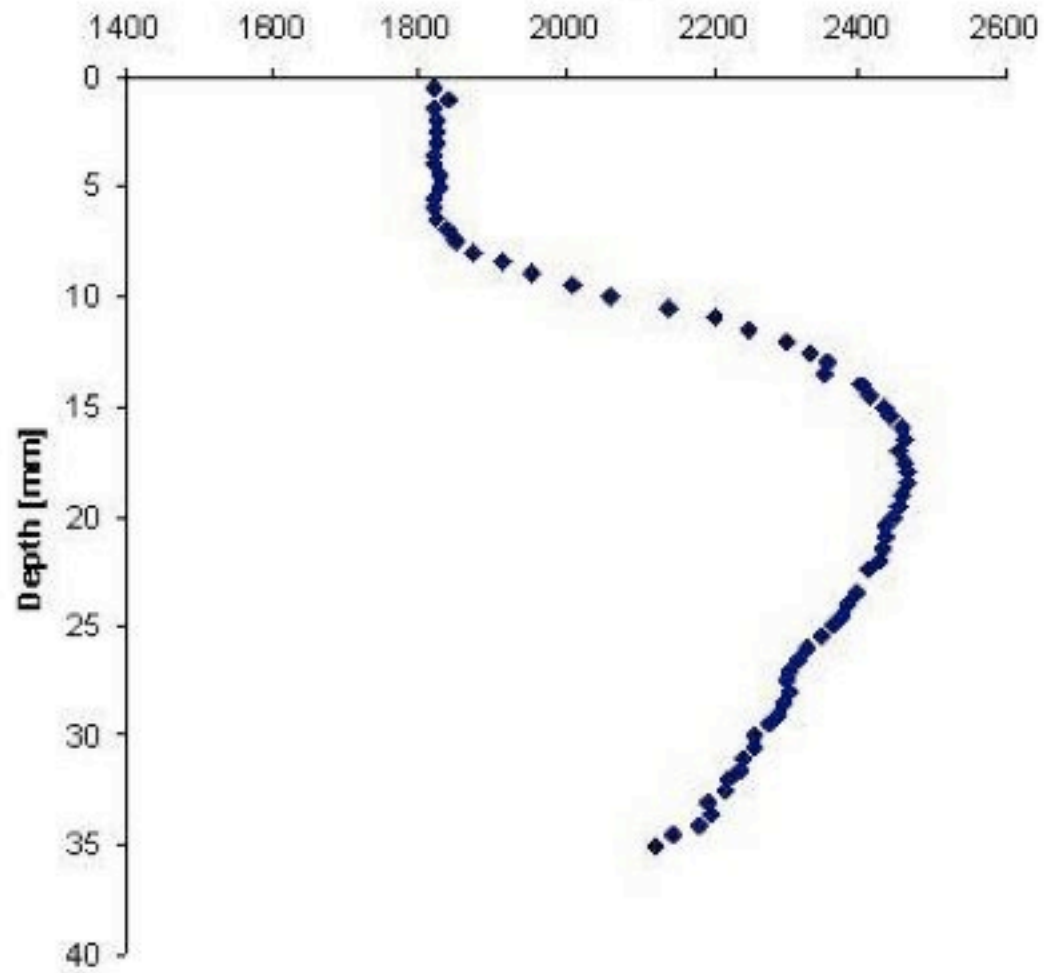


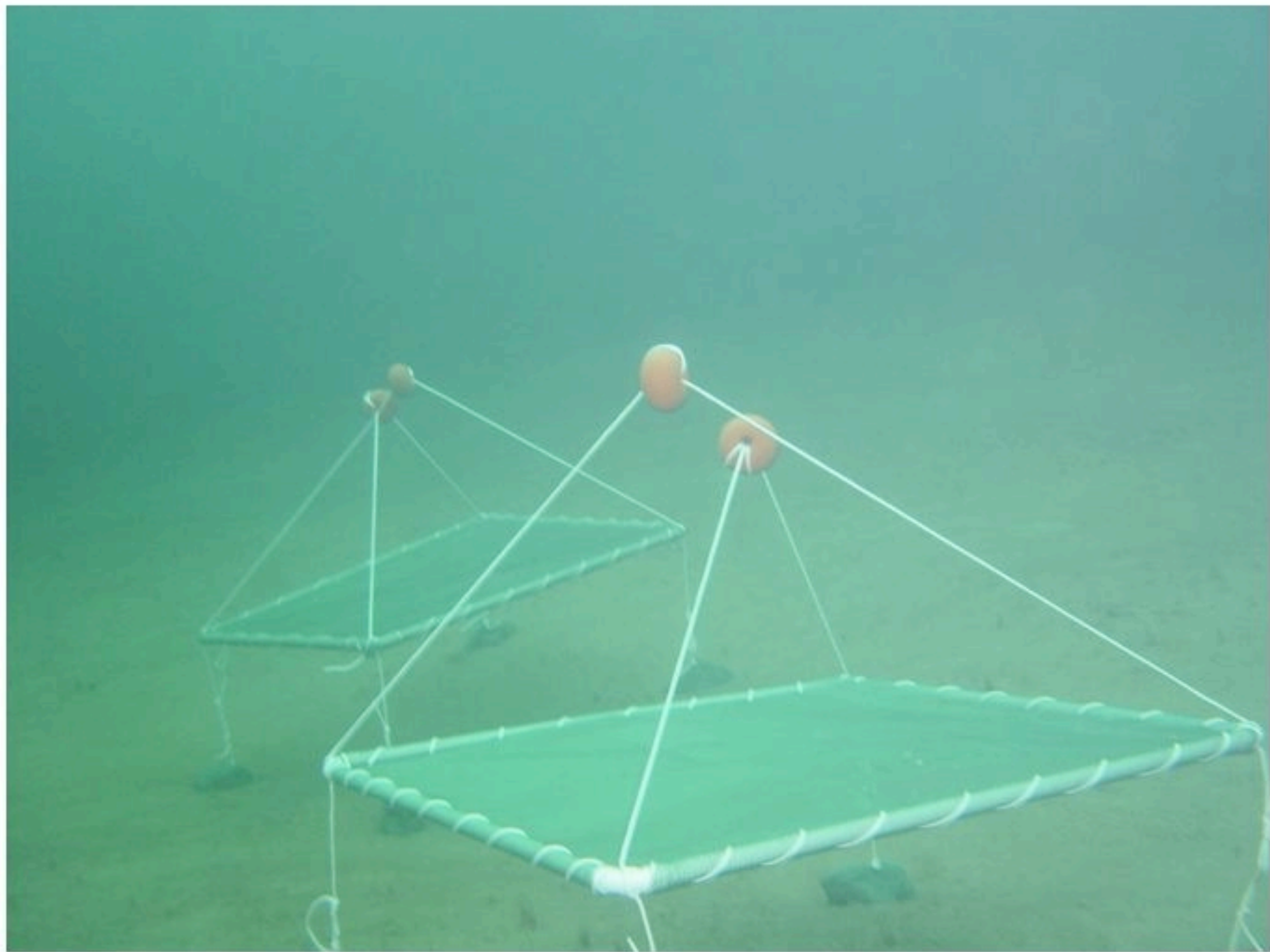




2 Nov 23:09

O₂ [$\mu\text{mol/l}$]















Questions?





Upcoming Events:

4 December – IPY Day: Above the Poles
Register at www.polartrec.com!

*Thank
You!*



*If you have further questions,
please contact us at
info@polartrec.com or call
1-907-474-1600*



McMurdo Station

