

Welcome to:

24 November 2008

***Live from IPY!***

*From McMurdo Station, Antarctica*



**Dipping into  
Antarctica with  
SCINI**

*presented by:*

***Dr. Stacy Kim, Cameo Slaybaugh, and the SCINI team***

**Live from IPY! participants:** If you are using the phone to join the audio portion of the event, please dial 1-800-315-6338 and when prompted, enter the code 78732#.



# Welcome to HorizonWimba



Arctic Research Consortium of the United States

Slides will be shown here

If using VOIP, press here to talk

'Chat' with one person or the entire group

List of all participants

Raise your hand to ask a question

Return to the lobby or exit



TALK

Janet\_Warburton says, "Welcome to our webinar!"

Main Room

People (3)  
Janet\_Warburton  
ronnie  
tina

Exit - Lobby - Help

**Please note:** Today's event will be recorded and archived at [www.polartrec.com](http://www.polartrec.com).



# Roll Call

- **When called, please state your:**
  - Name
  - School / Institution
  - The number of students participating today

# What is PolarTREC?



PolarTREC is a professional development experience in which K-12 teachers are paired with researchers in authentic polar research experiences.

In the next three years over 40 teachers from around the United States will join scientists in the Arctic and Antarctica in celebration of the International Polar Year!

***[www.polartrec.com](http://www.polartrec.com)***



# The PolarTREC Team



**Wendy Warnick**

PolarTREC PI  
Executive Director



**Helen Wiggins**

Program Coordinator



**Janet Warburton**

PolarTREC  
Project Manager



**Kristin Timm**

PolarTREC  
Project Manager



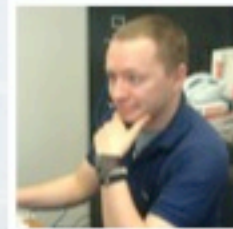
**Ronnie Owens**

Web Developer



**Ben Wade**

Web Developer



**Zeb Polly**

Systems Administrator



**Joed Polly**

Video Production

...with help from the  
entire staff at ARCUS



# International Polar Year (IPY)



The International Polar Year (2007-2009) is an exciting scientific campaign focusing on the world's polar regions!

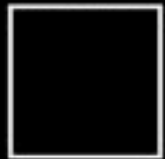
IPY is a time for discovery, science, learning, and awareness about the polar regions with activities for youth, scientists, and the public.

***[www.ipy.org](http://www.ipy.org)***





375 mi





Antarctic Digital Coastline: Antarctic Digital Database, 2000  
US Digital Outline: ESRI



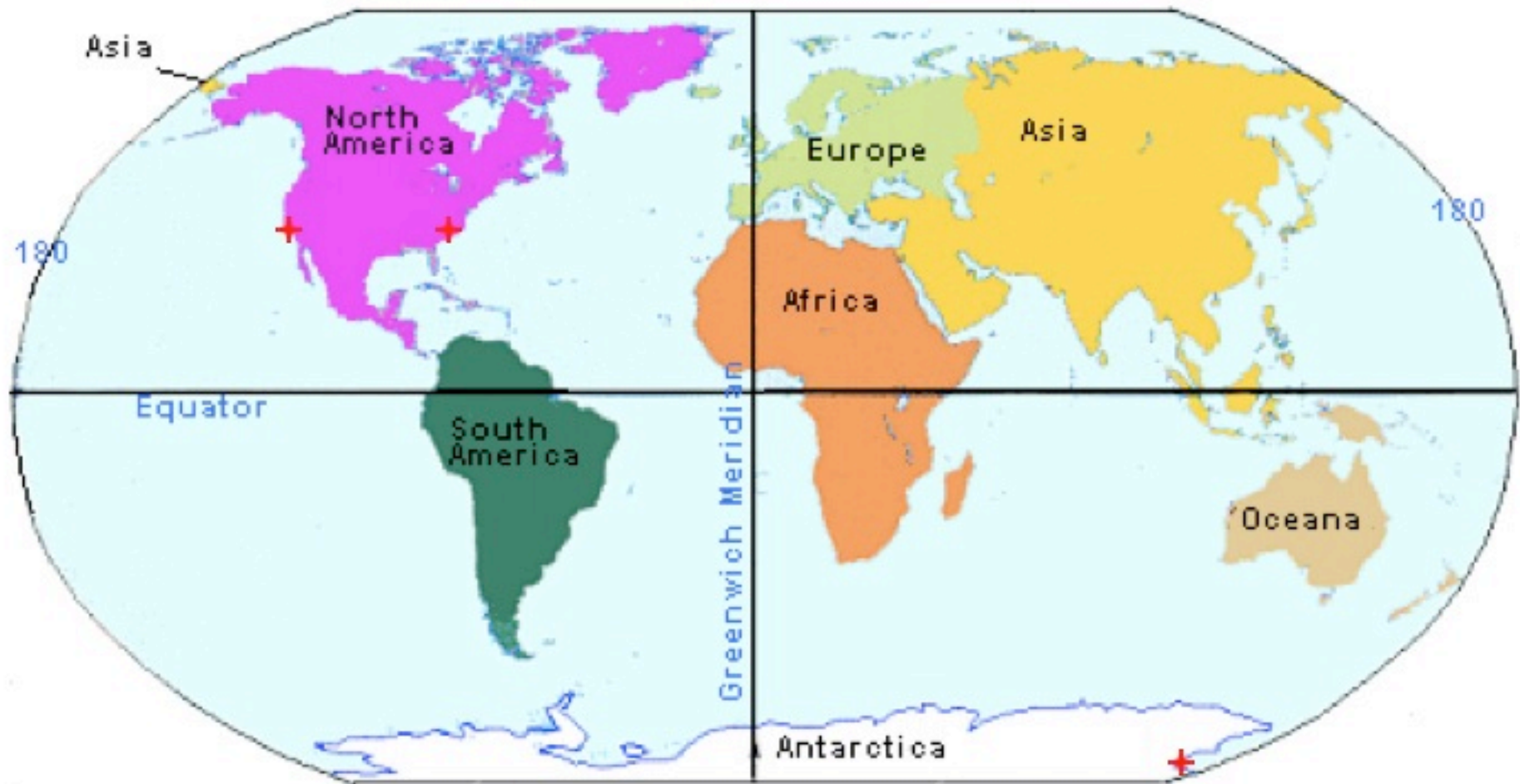


# The SCINI Team

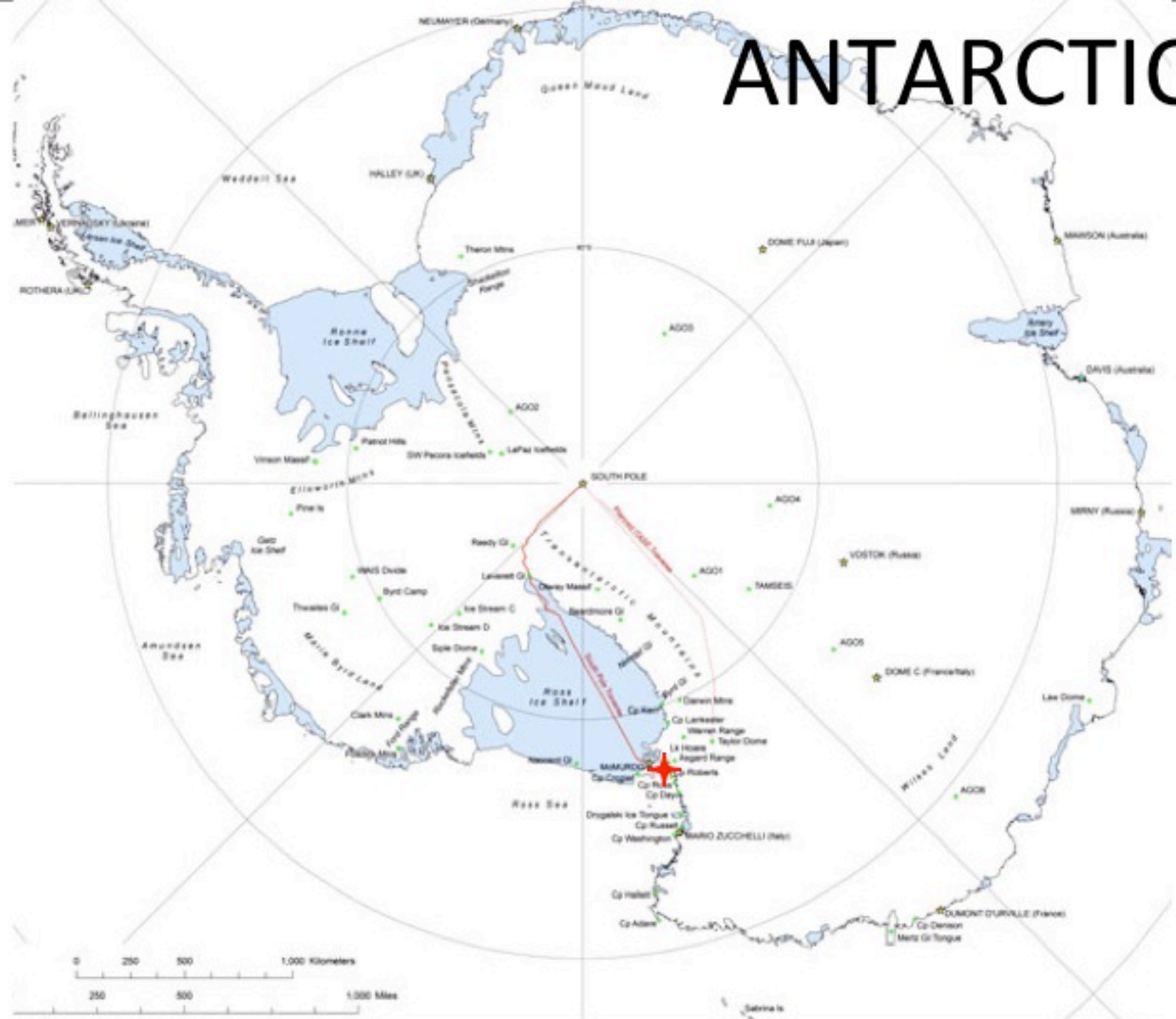
front row : Dr. Stacy Kim, Francois Cazenave, Marco Flagg

back row : Cameo Slaybaugh, Bob Zook, Scott Heeschen, Jim O'Sullivan, DJ Osborne

# At the Bottom of the World



# ANTARCTICA





# McMurdo Station





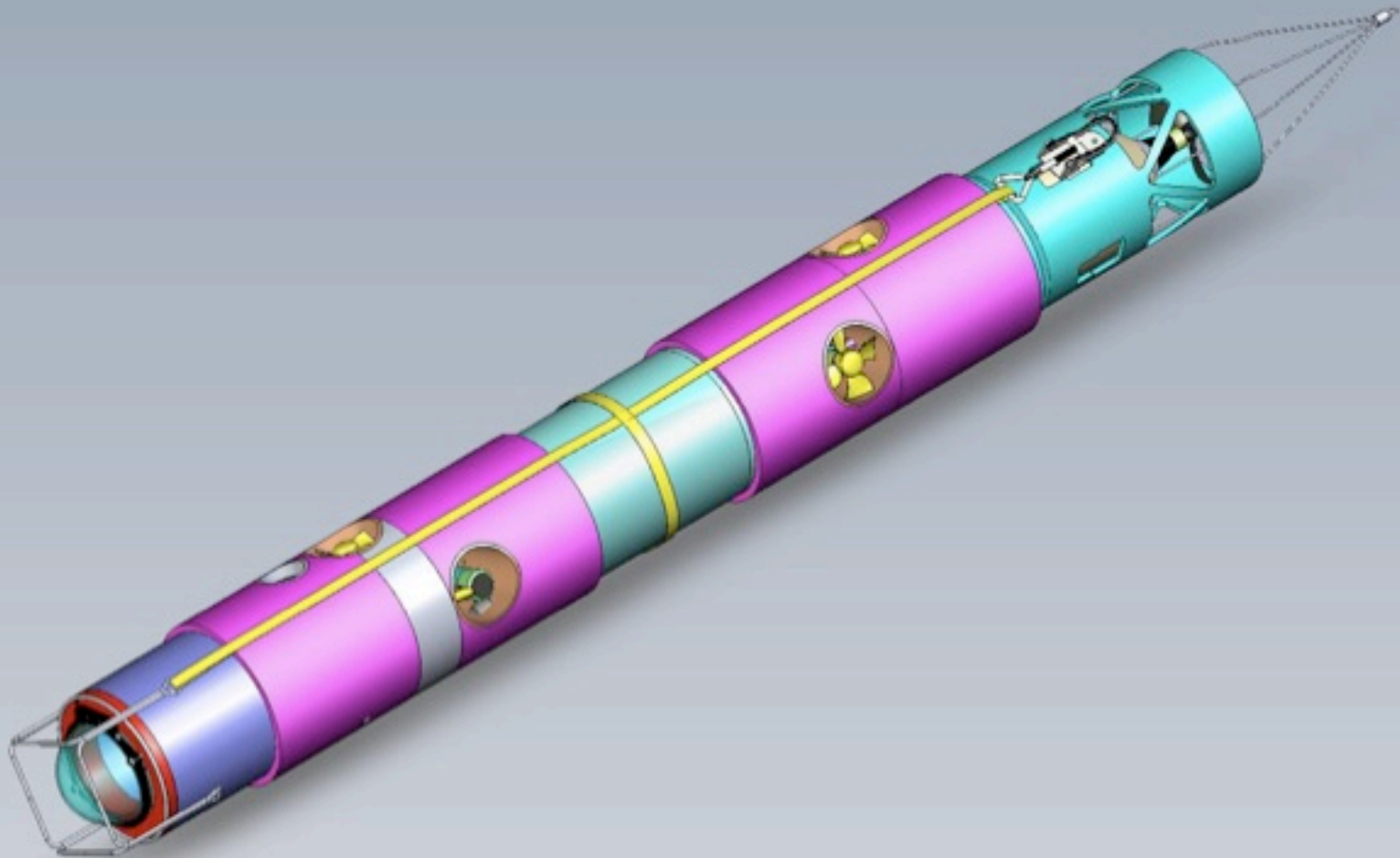
# SCINI

(Submersible Capable of Under Ice Navigation and Imaging)

ROV or Remotely Operated Vehicle

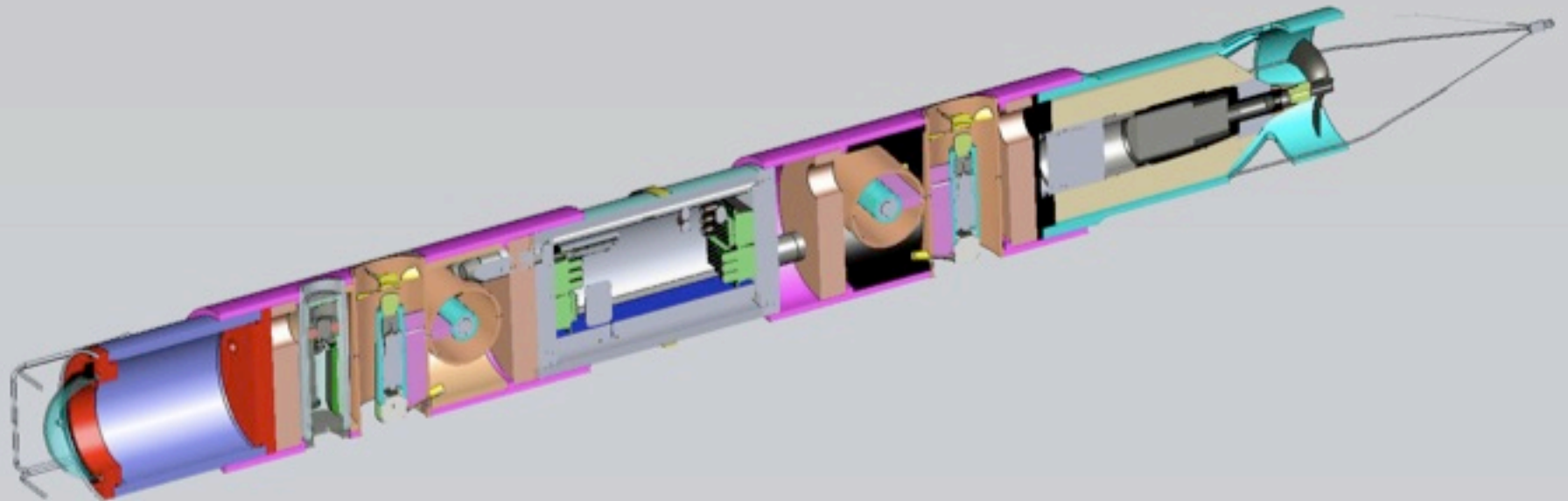


# SCINI External Anatomy





# SCINI Internal Anatomy



# SCINI's Goals

1. To locate new research sites and assess their suitability with minimal costs.
2. To reach depths below SCUBA diving limits (over 130 feet).
3. To create initial maps of seafloor areas.

# SCINI's Science Objectives

This year, our scientific goal is to expand the known ecological space in McMurdo Sound.

We have three specific target locations:

1. Cape Armitage - SCINI will map the boundaries of the sponge field, and perhaps offer some clues to solve the mystery of why the sponges are in this location, but not in others
2. Cape Evans – we will trace the iceberg-driven patterns of destruction and rebirth on the seafloor.
3. Heald Island – Beneath this permanent ice shelf remains one of the few unexplored regions of our planet and we wish to explore this amazing place.



**SCINI  
sites  
for  
2008**

**Cape Evans**

**Cape Armitage**

**Heald Island**







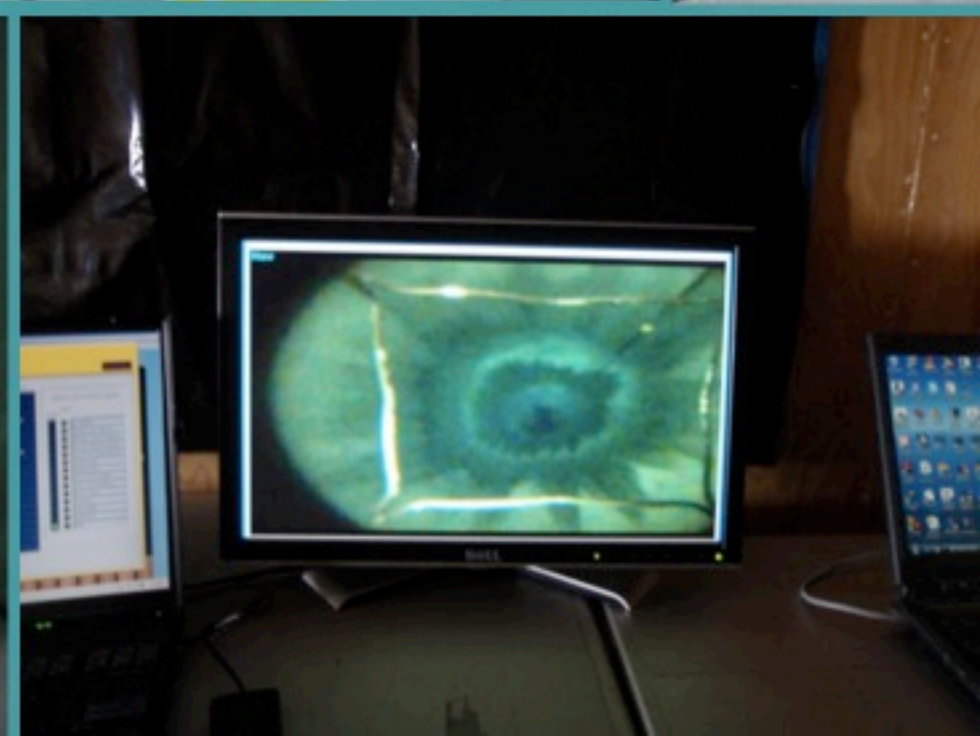
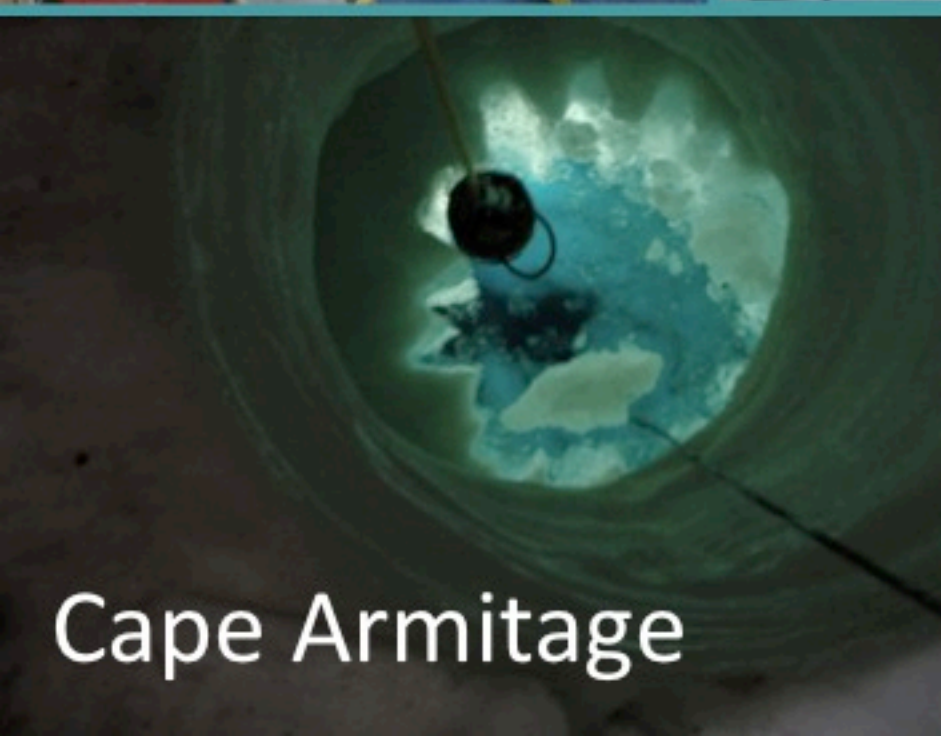
Testing  
SCINI



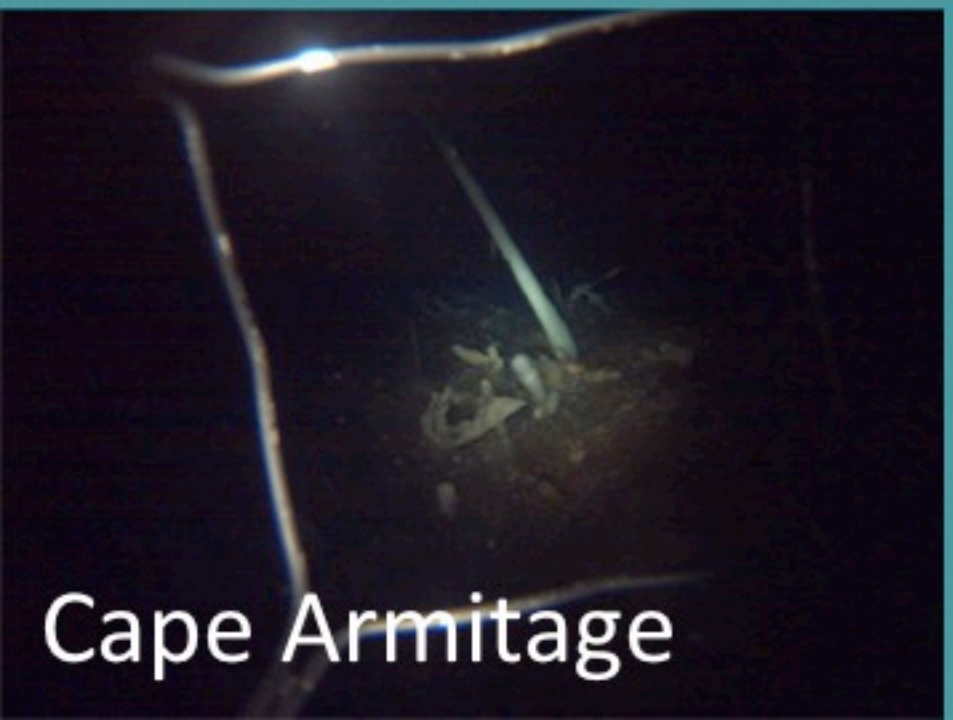
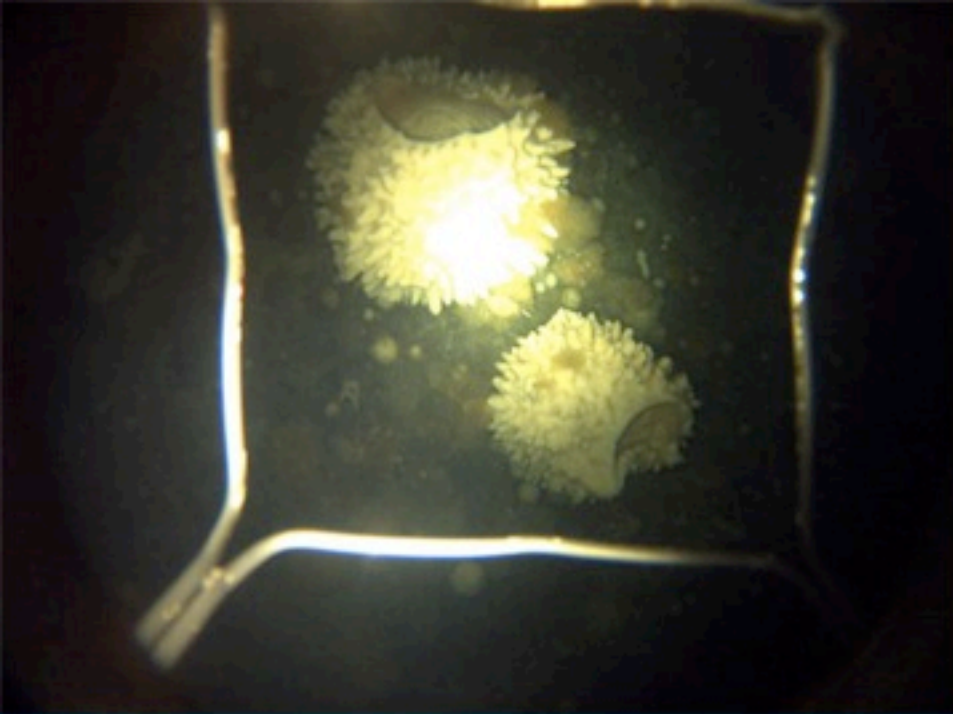
# Cape Armitage







Cape Armitage



Cape Armitage



# Cape Evans

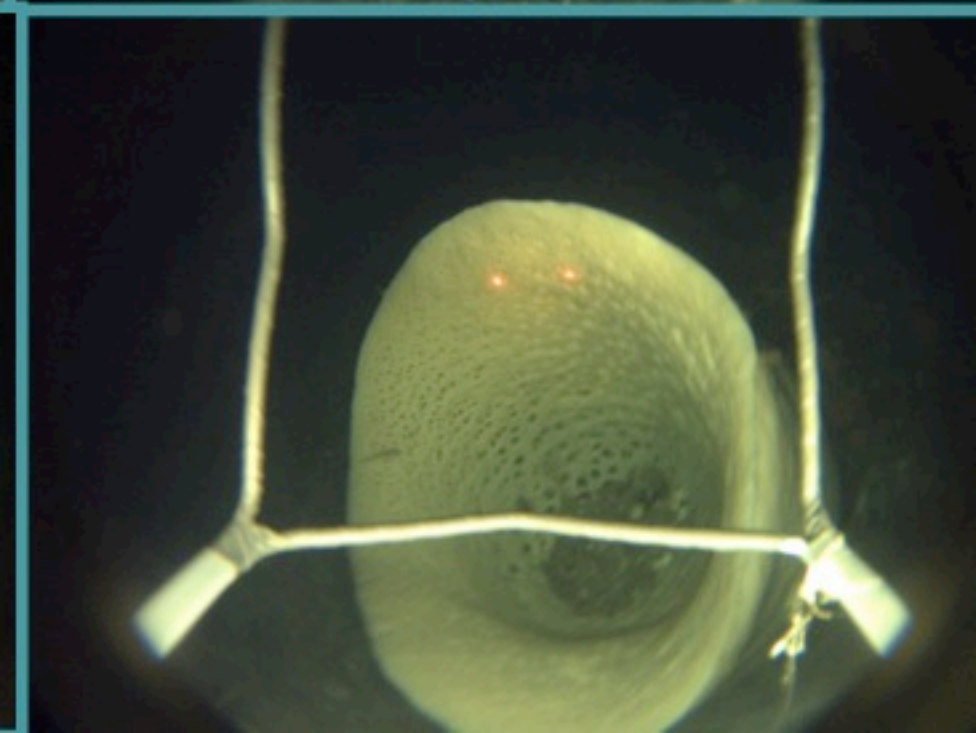
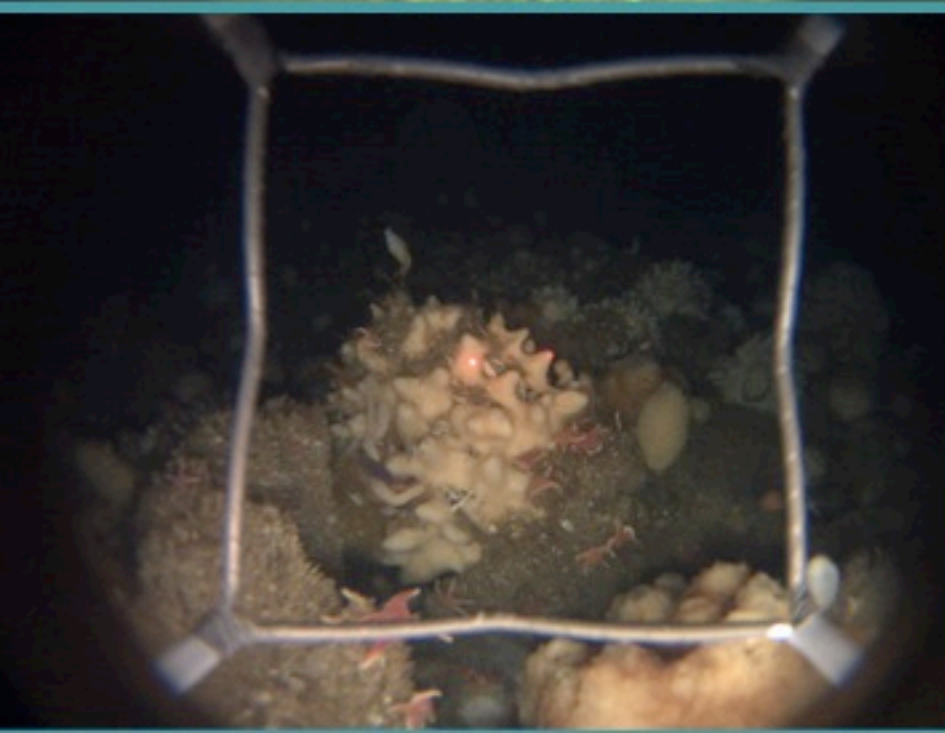






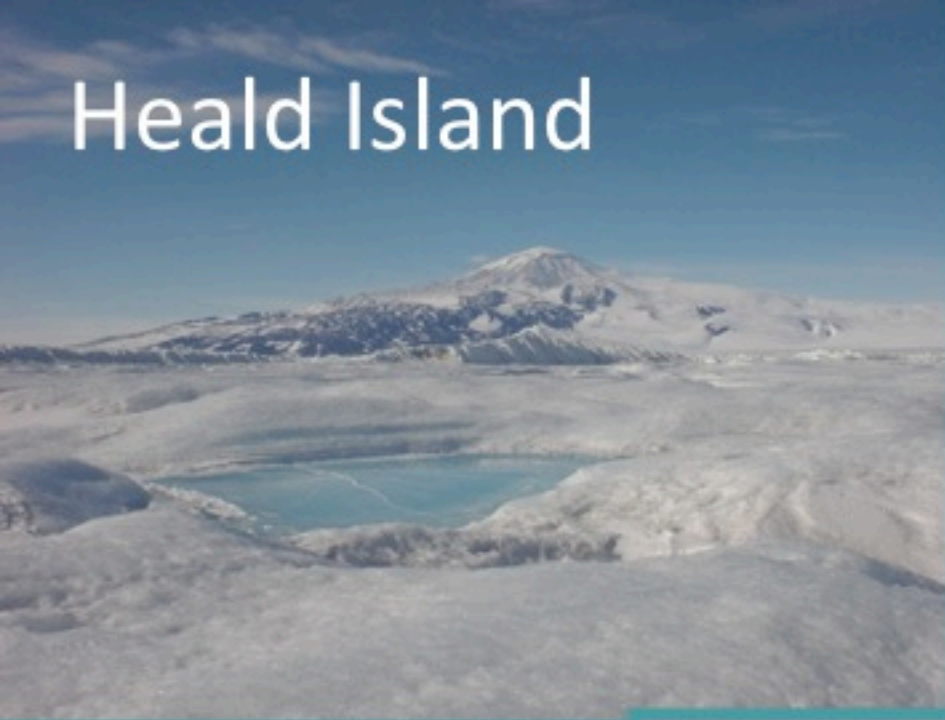
# Cape Evans

# Cape Evans





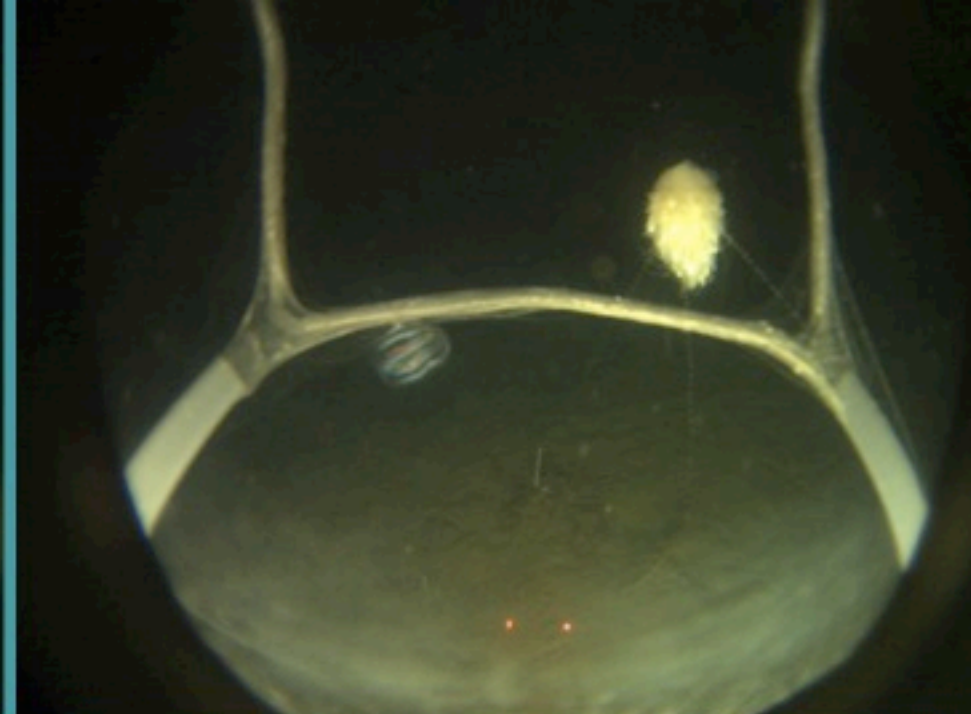
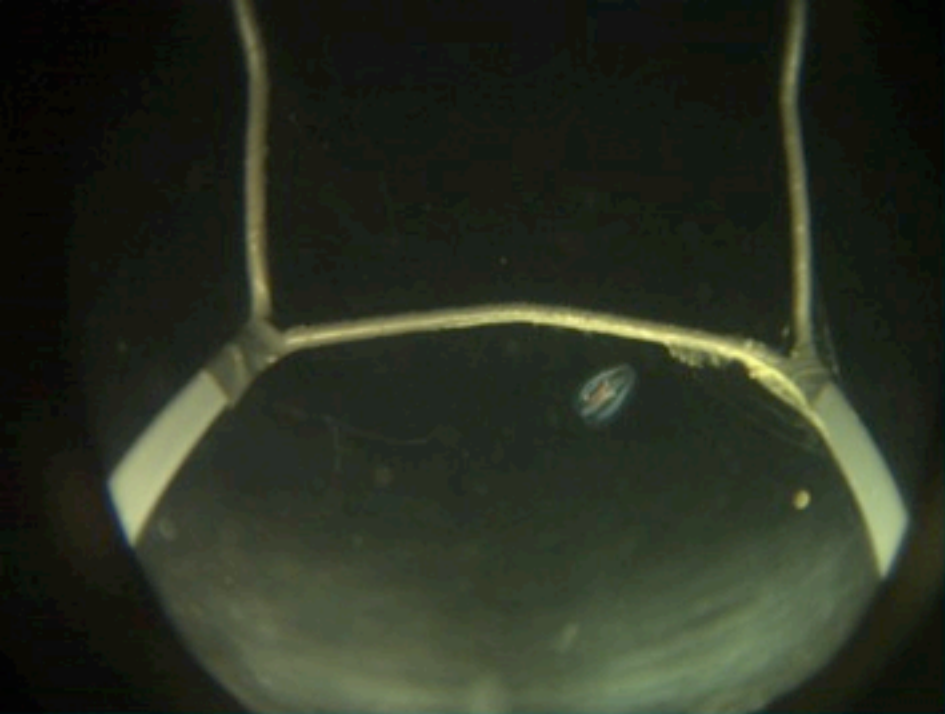
# Heald Island





# Heald Island





Heald Island



# SCINI in Action




Check out this video and more at:

<http://www.polartrec.com/antarctic-undersea-rov-08/resources>



*Questions?*



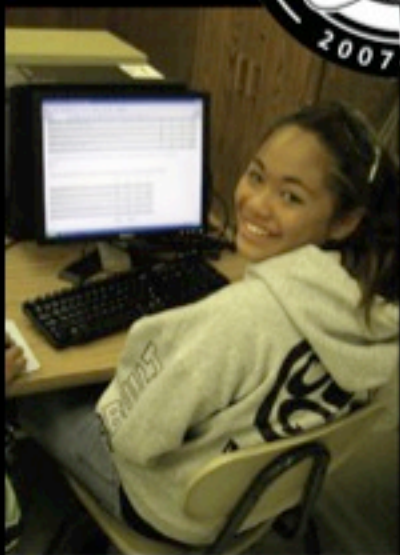
A bright sun is positioned in the upper center of the frame, casting a strong glow and creating a lens flare effect. Below the sun, a range of snow-covered mountains stretches across the horizon. The foreground is a vast, flat, snow-covered plain. The sky is a clear, pale blue.

Goodbye  
from the  
land of snow and sun





**Live from IPY!**



## **Upcoming Events:**

4 December – IPY Day: Above the Poles

Register at [www.polartrec.com](http://www.polartrec.com)!

# Thank You!



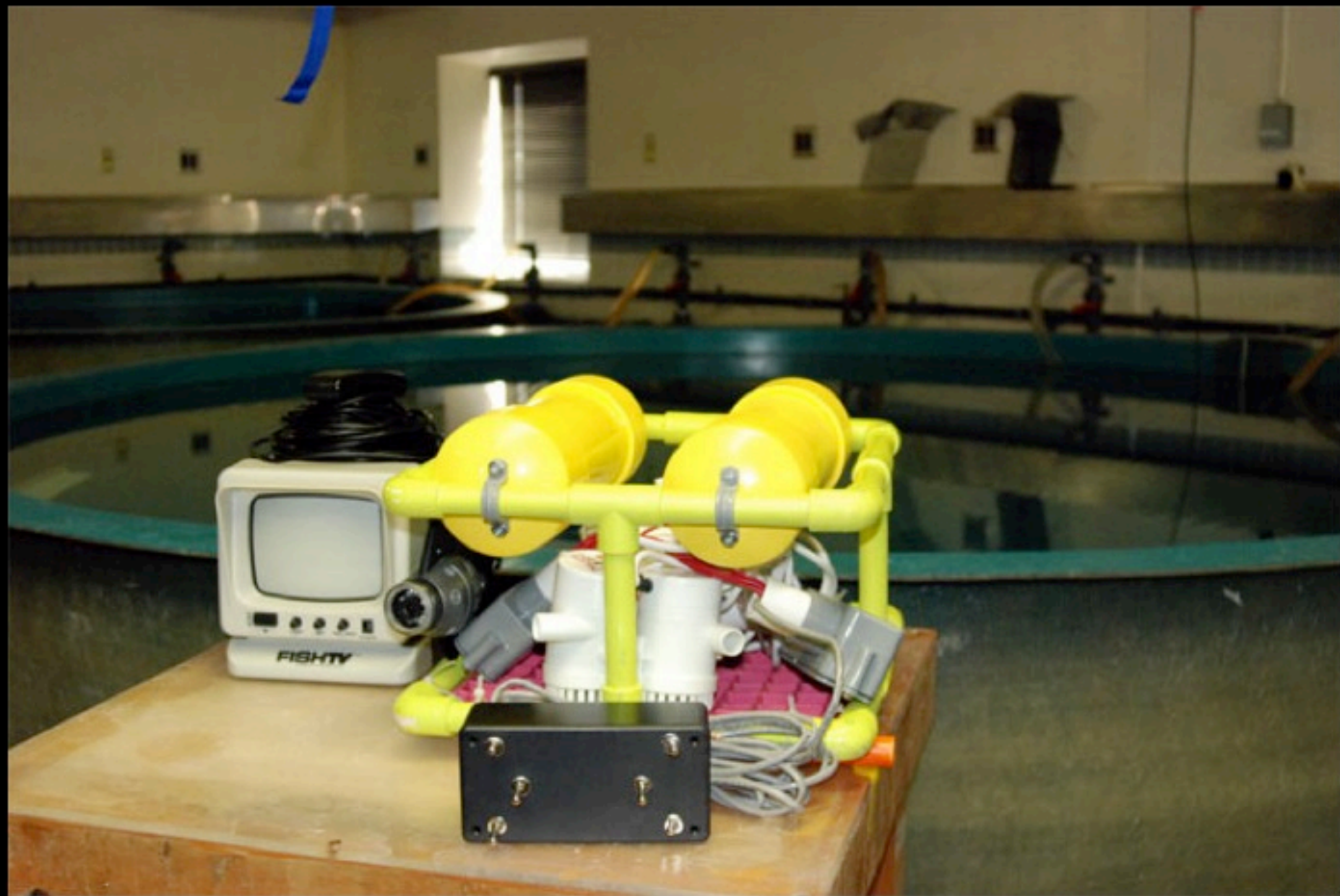
*If you have further questions,  
please contact us at:  
info@polartrec.com or call  
1-907-474-1600*

*The archive of this event  
will be available shortly at:  
www.polartrec.com!*



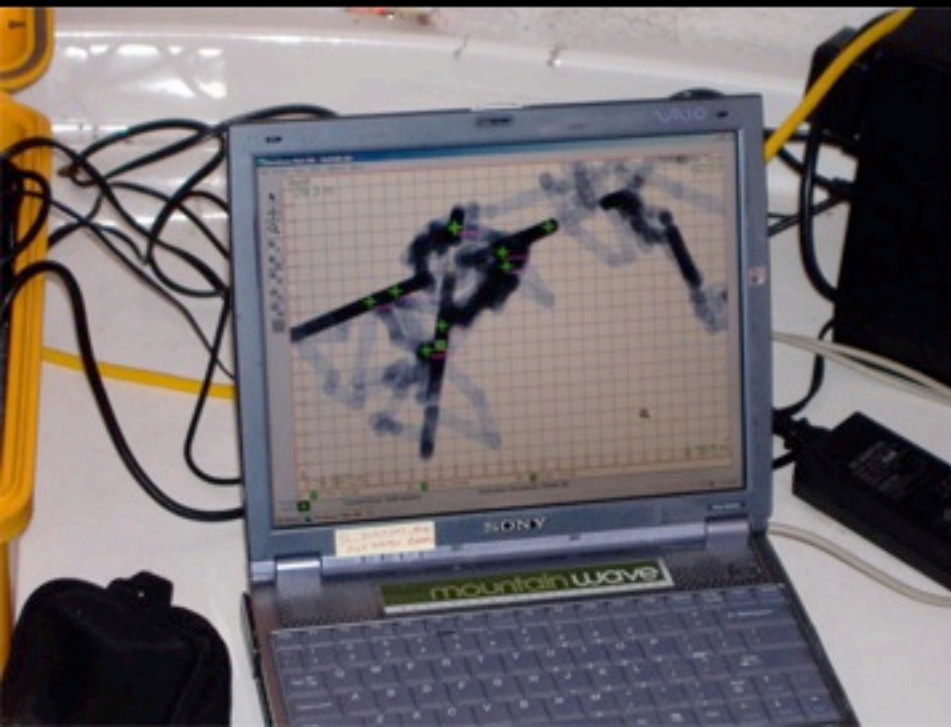
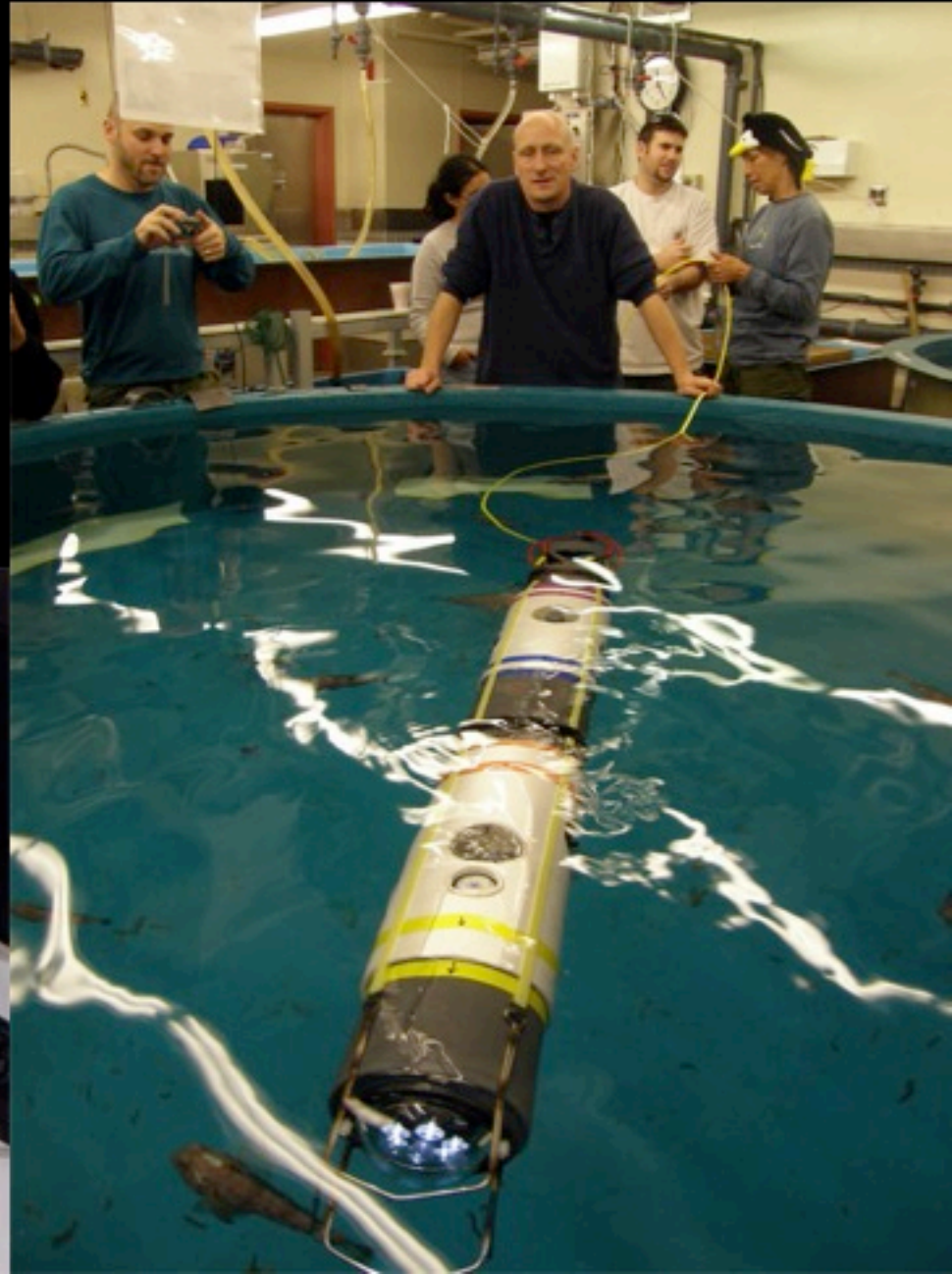








# SCINI Gets Tested in the Test Tank





# SCINI Gets Tested in the Field

