

Live from IPY!

with Maggie & Robyn

17 April 2007

BEST: Bering Ecosystem Study

Aboard the USCGC Healy in the Bering Sea





Raise your hand to ask a question

List of all participants

Return to the Lobby or Exit

Slides will be shown here

'Chat' with one person or the entire group

A screenshot of the HorizonWimba software interface. On the left is a chat window with a scrollable list of messages: "Connecting to server...", "You have connected successfully!", "You have entered the lobby.", "You have entered 'Arctic Research Consortium of the United States (ARCUS)'.", and "Your media format is Third-party Conference Call.". Below the messages is a text input field with "ALL" selected. In the center is a participant list with a header "Name" and a sub-header "Heleen_Wiggins". To the right of the list are icons for "Yes", "No", and a hand icon with a question mark. On the far right is a menu with "Exit", "Lobby", and "Help" options. A red oval highlights the hand icon with a question mark, and another red oval highlights the "Exit Lobby - Help" menu. Arrows point from the external text labels to these elements.



What is PolarTREC?

PolarTREC is a professional development experience in which K-12 teachers are paired with researchers in authentic polar research experiences.

In the next three years 36 teachers from around the United States will join scientists in the Arctic and Antarctic in celebration of the International Polar Year!

[*www.polartrec.com*](http://www.polartrec.com)



The PolarTREC Team



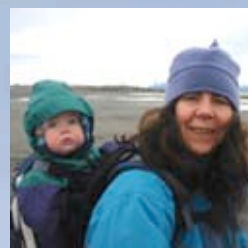
Wendy Warnick

PolarTREC PI
Executive Director



Helen Wiggins

Program Coordinator



Janet Warburton

PolarTREC
Project Manager



Katie Breen

PolarTREC
Project Manager



Kristin Fischer

PolarTREC
Project Assistant



Ronnie Owens

Web Developer



Ben Wade

Web Developer



Tina Buxbaum

Electronic Media
Project Manager



Zeb Polly

Systems Administrator



Joed Polly

Video Production

...with help from
the entire staff
at ARCUS





Who are we talking to today?

**PolarTREC & NOAA
Teacher at Sea Teacher**

Maggie Prevenas

Kalama Intermediate School
Hawaii



PolarTREC Science Educator

Robyn Staup

Boonshoft Museum of Discovery
Ohio



Healy Captain

Capt. Ted Lindstrom



Chief Scientist

Ray Sambrotto
Columbia University
New York



Researcher

David Hyrenbach
University of Washington
Washington



Coast Guard Crewmember



BEST- Bering Ecosystem Study



Josh London

View of the Healy in sea ice from helicopter.

Goal of the project:

Conduct transects over the eastern Bering Sea to measure the productivity and health of the marine ecosystem.

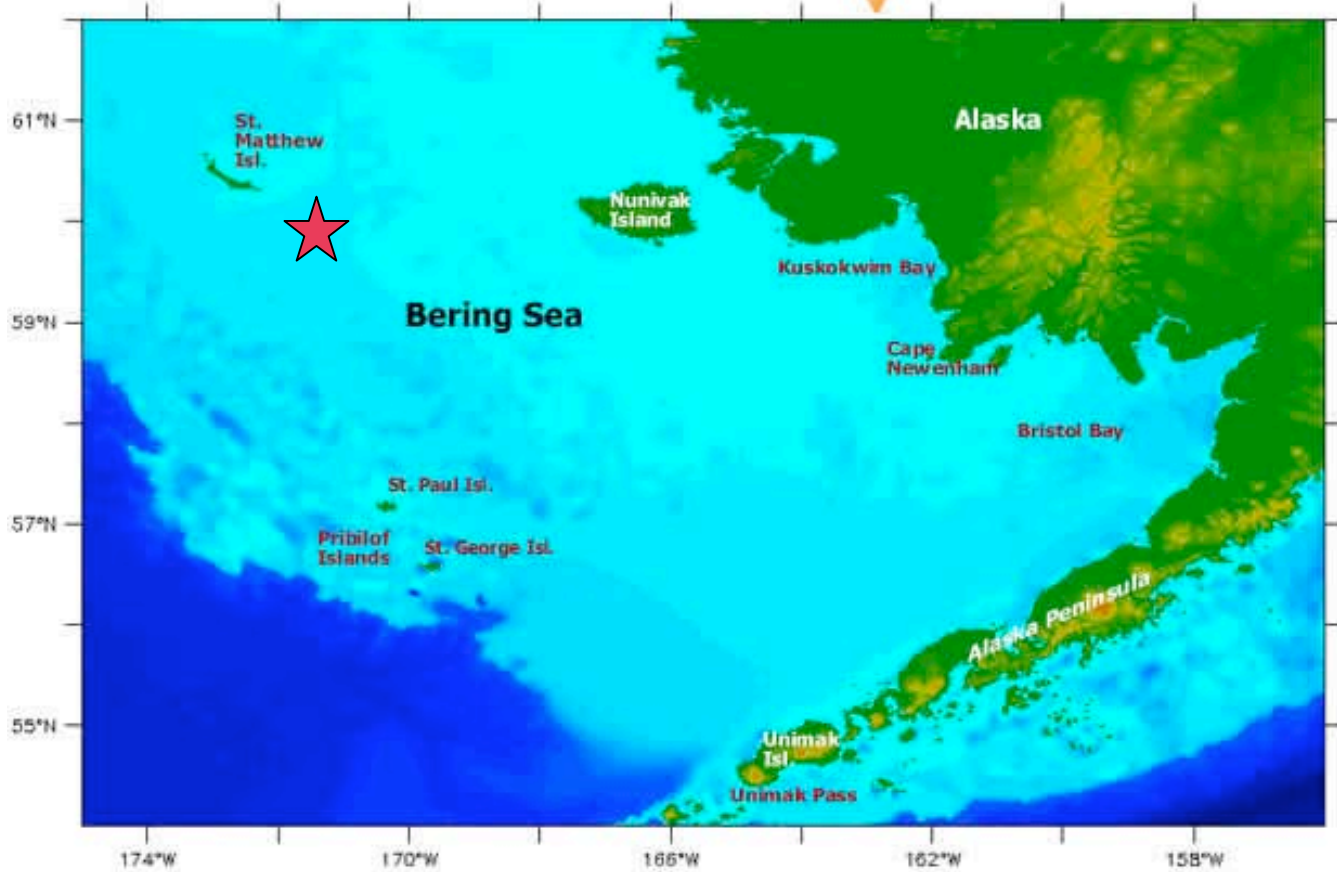
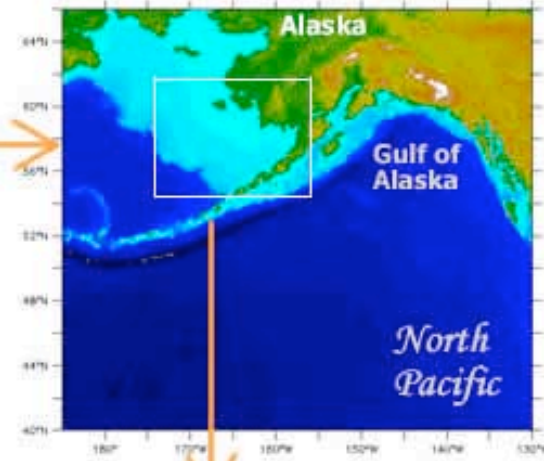
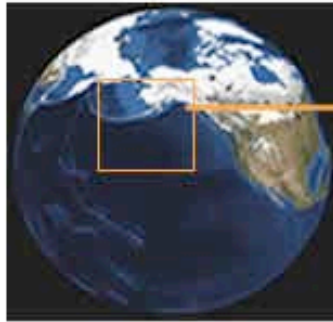
Dates:

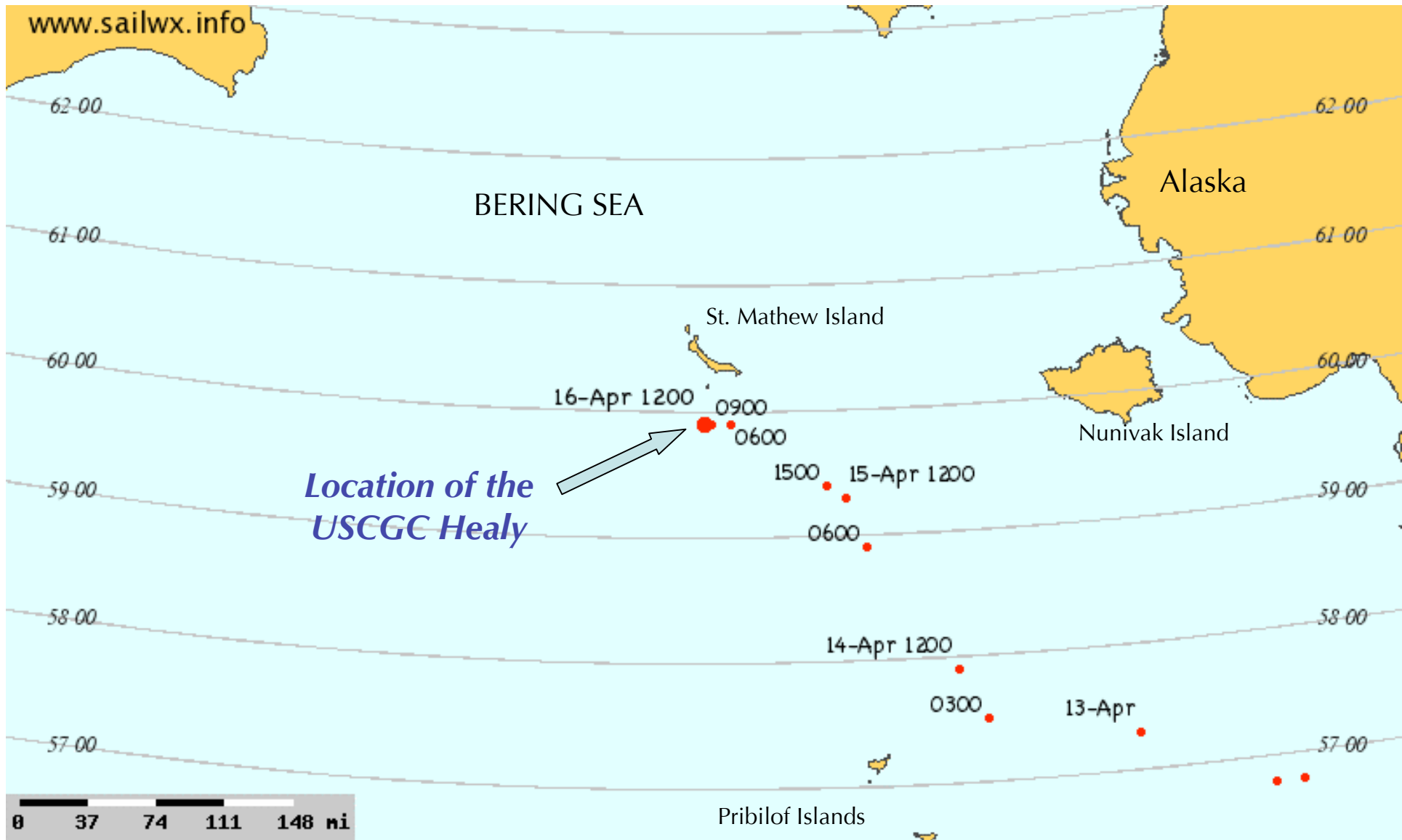
7 April - 14 May 2007

Location:

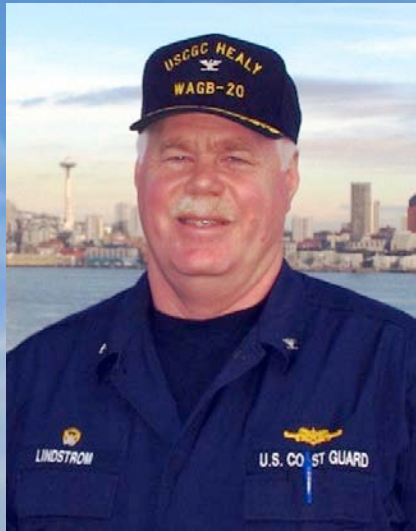
Aboard the US Coast Guard Cutter Healy, in the Bering Sea

Where are
Ms. Staup,
Ms. Prevenas,
and the
USCGC Healy
Scientists & Crew?



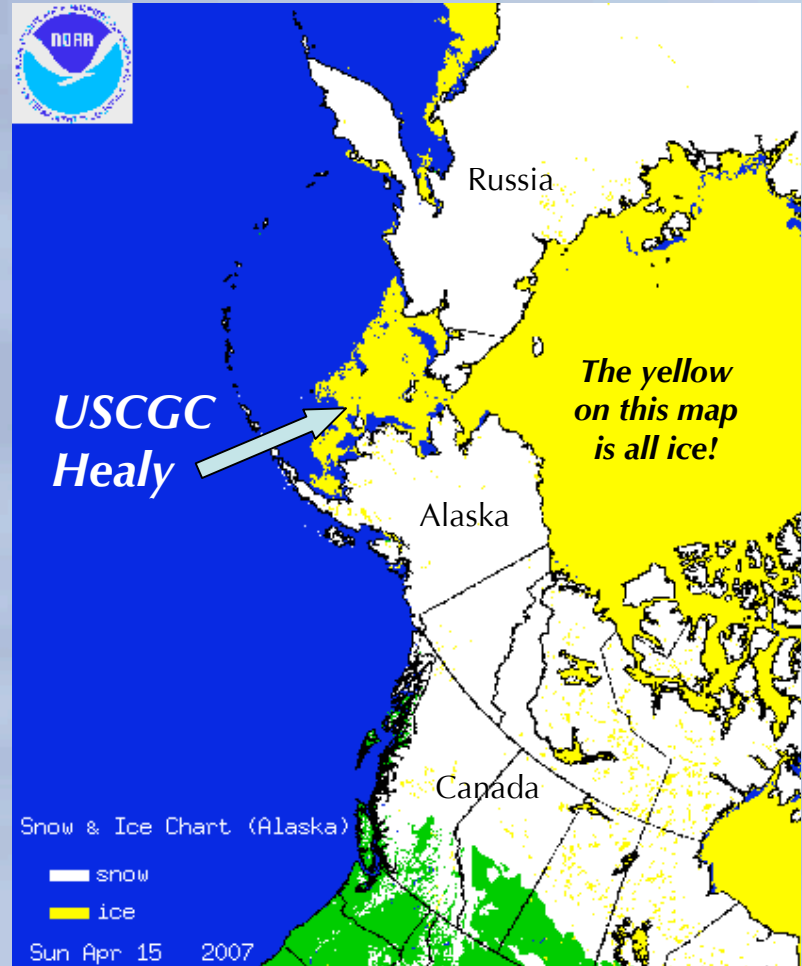


*The US Coast Guard Cutter Healy
and Captain Ted Lindstrom*





Breaking Ice



Captain Ted Lindstrom



The Bridge



Outside the bridge



Inside the bridge



Science Onboard

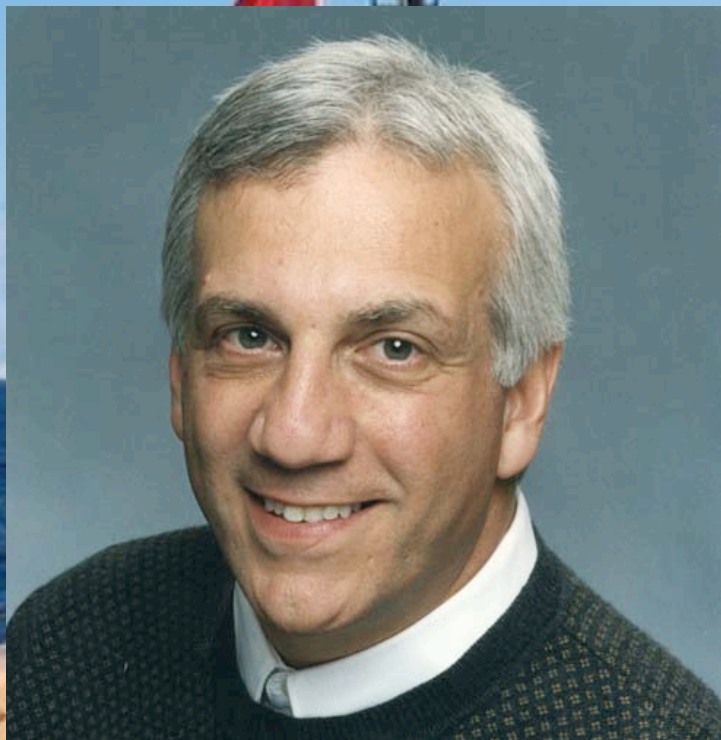


Rosette



Zooperoo

***Dr. Ray Sambrotto
Chief Scientist***





Life onboard the USCGC Healy





*More Science
onboard the
USCGC Healy*



Dr. David Hyrenbach





Safety on the USCGC Healy





Mustang Suits & Bunny Boots





*Researcher in drysuit
and safety gear*



Wildlife Sightings



Seals



Bald Eagle

*Thank
You!*



*If you have further questions,
please contact us at
info@polartrec.com or call
1-907-474-1600*

