



Raise your hand to ask a question

List of all participants

Return to the Lobby or Exit

Slides will be shown here

'Chat' with one person or the entire group

A screenshot of the HorizonWimba software interface. On the left is a chat window with a scrollable list of messages: "Connecting to server...", "You have connected successfully!", "You have entered the lobby.", "You have entered 'Arctic Research Consortium of the United States (ARCUS)'.", and "Your media format is Third-party Conference Call." Below the messages is a text input field with "ALL" selected. In the center is a participant list with a header "Name" and a sub-header "Helen_Wiggins". Above the list are buttons for "Yes", "No", and a hand icon with a question mark. On the right is a menu with "Exit", "Lobby", and "Help" options. At the bottom are icons for a list, a checkmark, an 'X', and a hand.

Live from IPY!

12 April 2007



POLAR
TREC

SEDNA- Sea Ice Experiment: Dynamic Nature of the Arctic

Navy Sea Ice Camp, Beaufort Sea



What is PolarTREC?

PolarTREC is a professional development experience in which K-12 teachers are paired with researchers in authentic polar research experiences.

In the next three years 36 teachers from around the United States will join scientists in the Arctic and Antarctic in celebration of the International Polar Year!

[*www.polartrec.com*](http://www.polartrec.com)



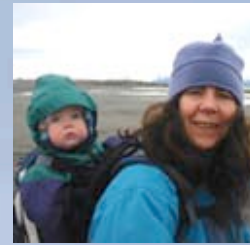
The PolarTREC Team



Wendy Warnick
PolarTREC PI
Executive Director



Helen Wiggins
Program Coordinator



Janet Warburton
PolarTREC
Project Manager



Katie Breen
PolarTREC
Project Manager



Kristin Fischer
PolarTREC
Project Assistant



Ronnie Owens
Web Developer



Ben Wade
Web Developer



Tina Buxbaum
Electronic Media
Project Manager

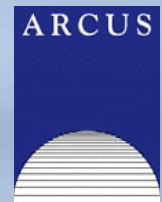


Zeb Polly
Systems Administrator



Joed Polly
Video Production

...with help from
the entire staff
at ARCUS





Who are we talking to today?



PolarTREC Teacher

Robert Harris

Hartford High School
Vermont



Researcher

Cathy Geiger

Cold Regions Research & Engineering
New Hampshire



SEDNA- Sea Ice Experiment



Goal of the project:

Develop a deeper understanding of how the atmosphere, ocean, and sea ice interact and influence the mass balance of sea ice cover.

Dates:

21 March - 18 April 2007

Location:

Beaufort Sea, North of Barrow, Alaska

Navy Sea Ice Camp



Russia

Europe

Arctic Ocean

Greenland

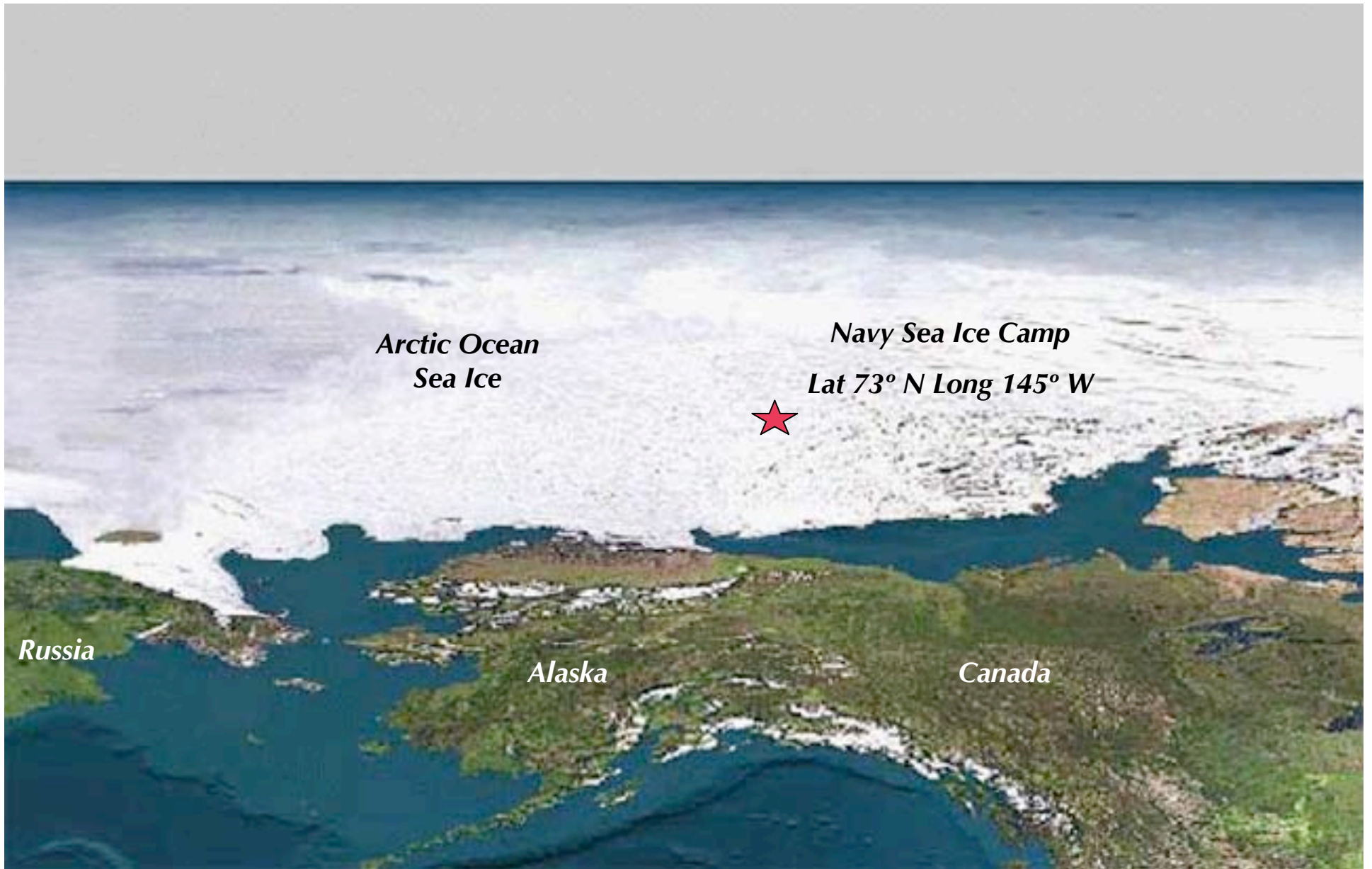
*Beaufort
Sea*

Alaska

Atlantic Ocean

Pacific Ocean

Canada



*Arctic Ocean
Sea Ice*

*Navy Sea Ice Camp
Lat 73° N Long 145° W*



Russia

Alaska

Canada



On the Ice!





Life at Camp





The Science



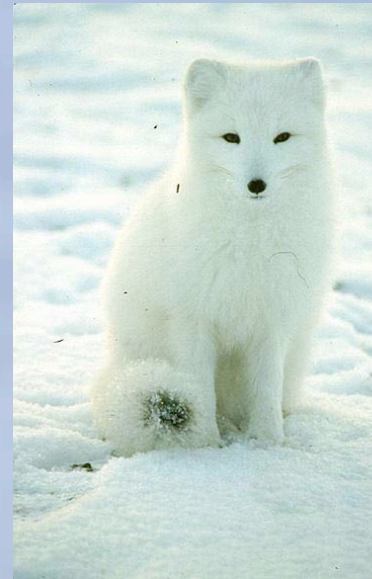




Wildlife



Arctic Fox





The People



*Thank
You!*



*If you have further questions,
please contact us at
info@polartrec.com or call
1-907-474-1600*

