

**Oden Expedition to McMurdo Station, Antarctica
December 10, 2006 – December 29, 2006**

**POLAR
TREC**

**National Science Foundation
Swedish Arctic Research Program
Instituto Antartico Chileno
Arctic Research Consortium of the US**





Hello from the Oden



**I am Allan Miller
from Soldotna,
Alaska**



**I am Ute Kaden
from Brownsville,
Texas**



The Oden at the pier in Punta Arenas, Chile



Current location of the Oden



Current location of the Oden



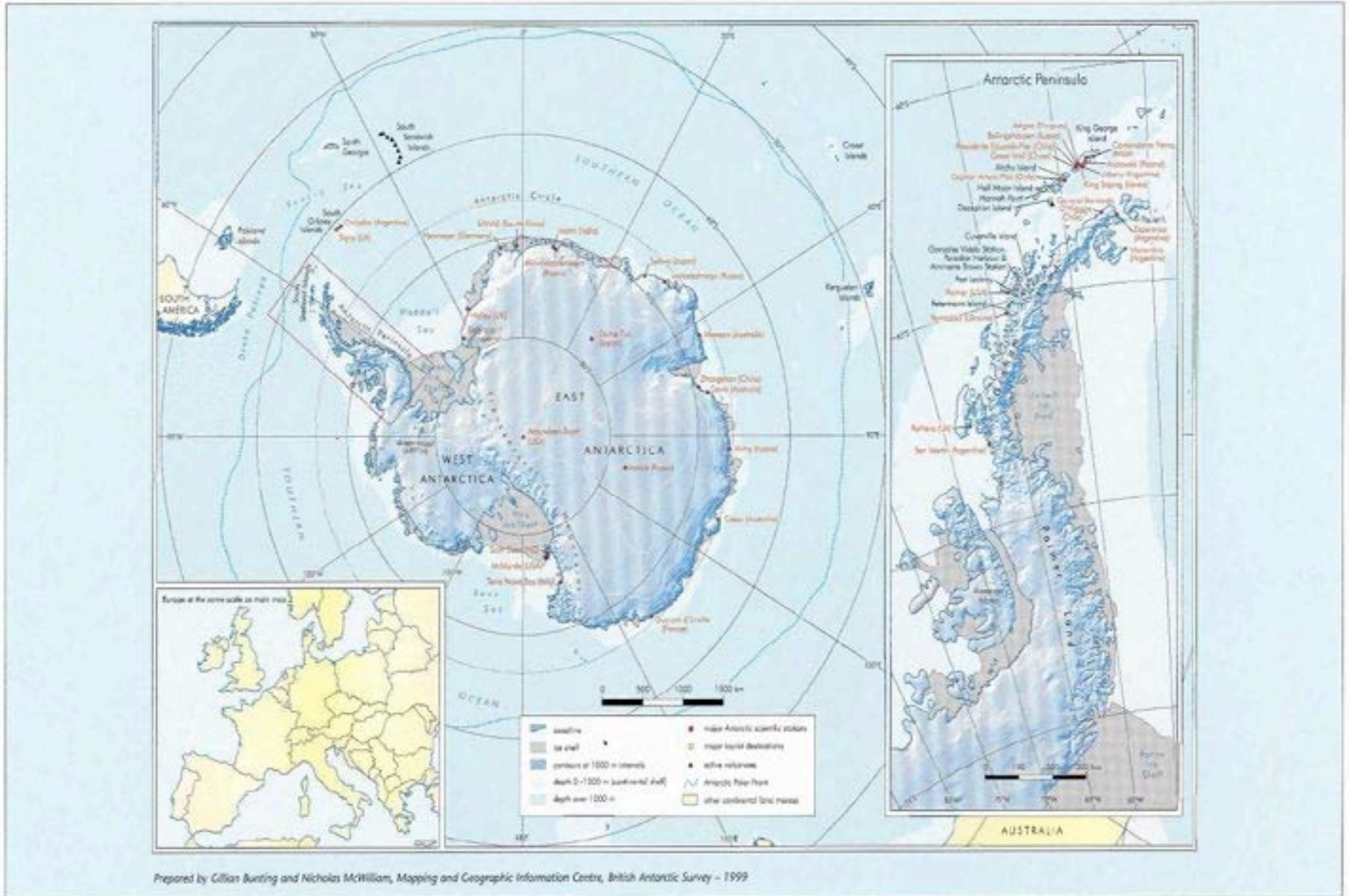


Icebergs & Antarctic Circle





The continent of Antarctica





More Icebergs



Swedish Research Team
Agneta and Melissa
Swedish Teacher - Ingela





Captain Arnell





Inside the Oden - Technology



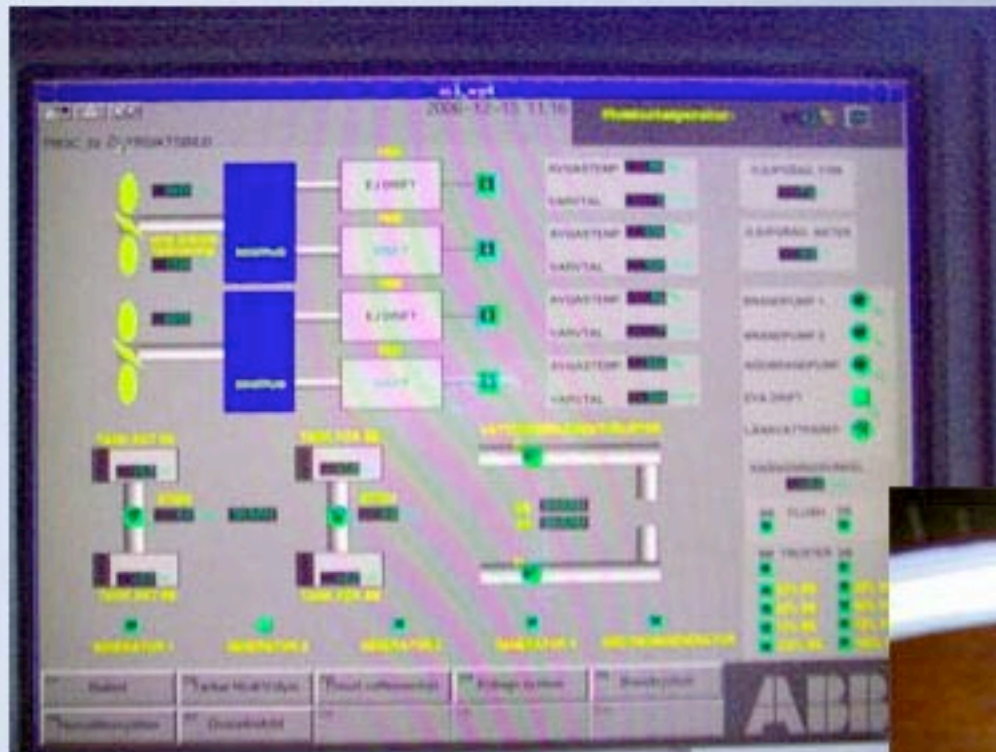
Oden bridge

Communications
Center





Inside the Oden - Technology



Oden systems monitor

Anglenometer





Safety Training





Science on the Oden -Observations



Brent & Mrs. Chippy looking for wildlife.



Science on the Oden - SOLO Probe



Launching the SOLO Probe





Science on the Oden - Cooper Guest



Nutrient analyzer





Animals





Magellan Penguins





Life Aboard the Oden





Food is good!





Thank You!

www.polartrec.com

Join the journey, make global connections and be a part of the International Polar Year!

