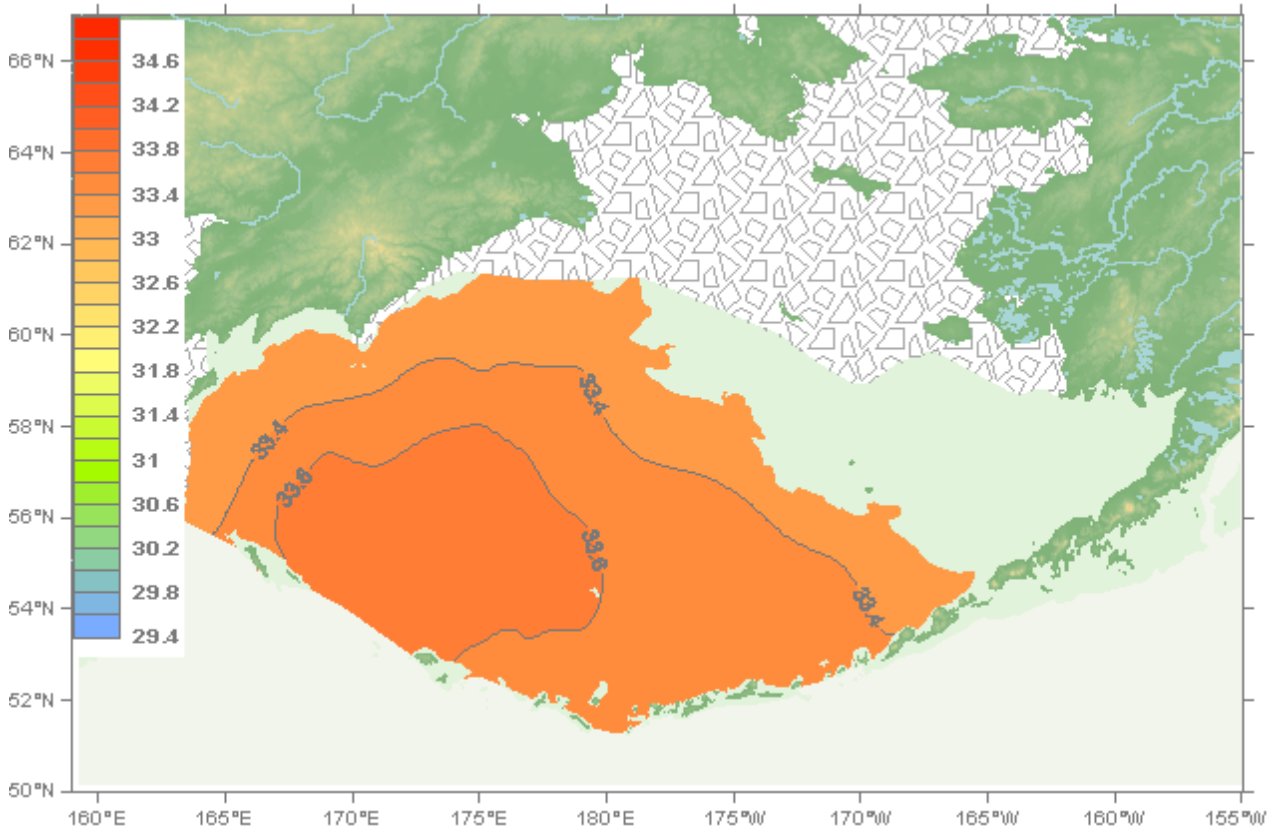
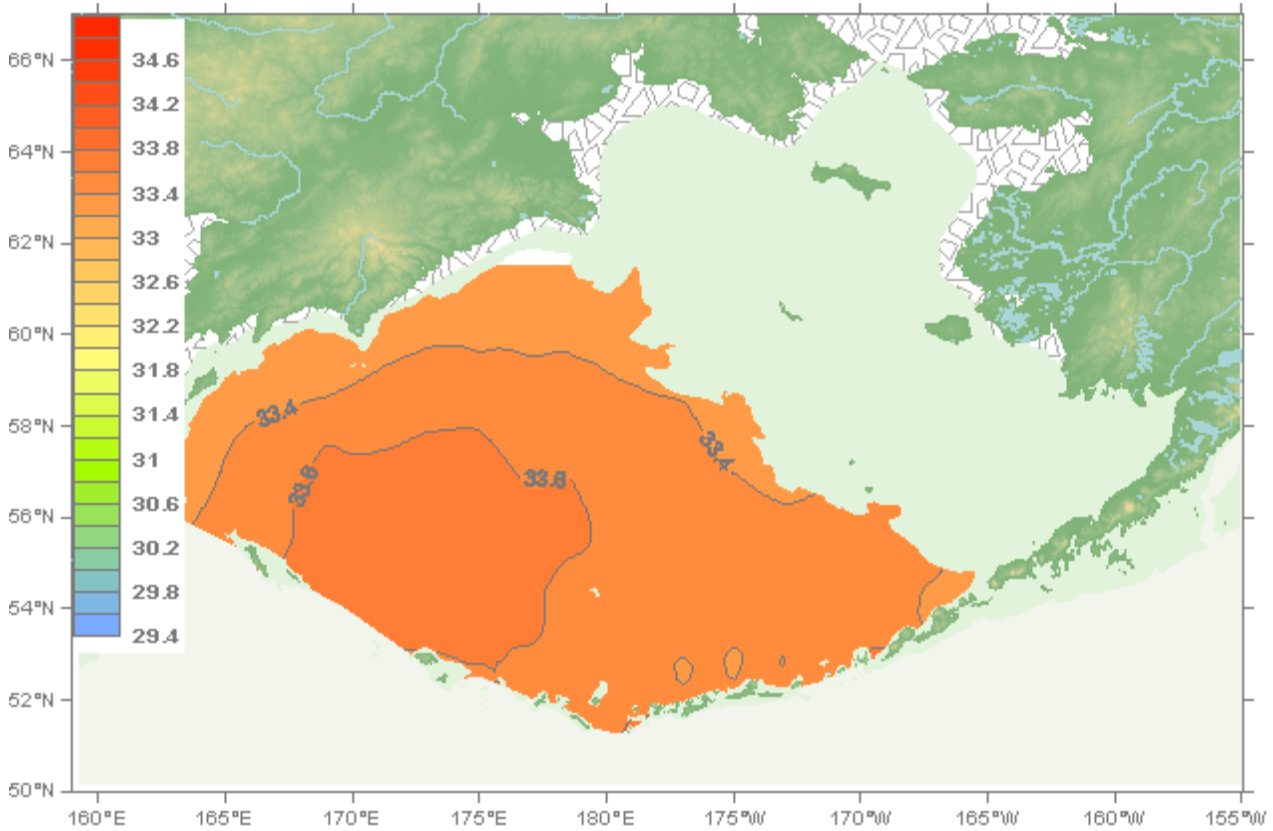


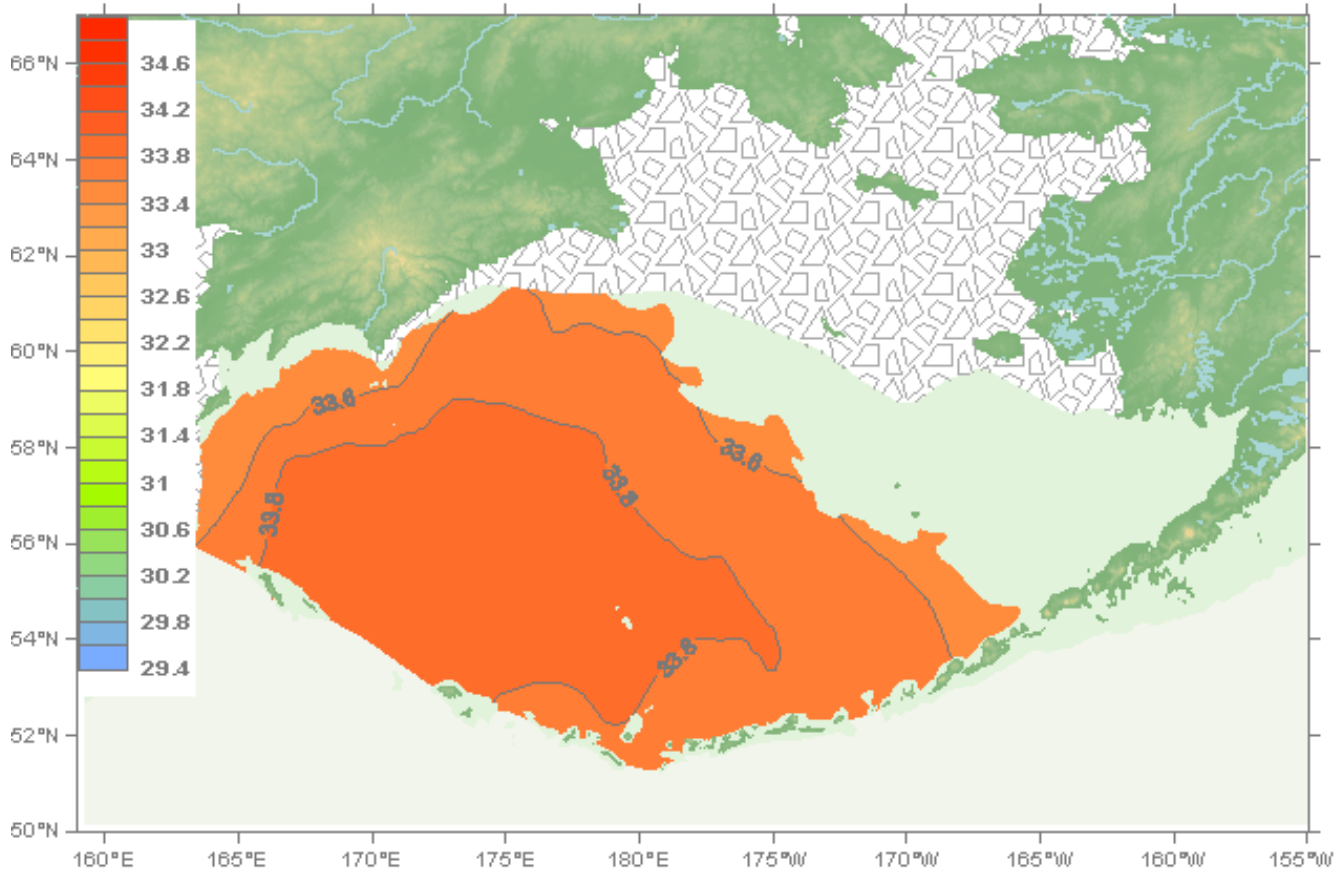
Bering Sea: Salinity Climatological Fields. Spring - 200 m.



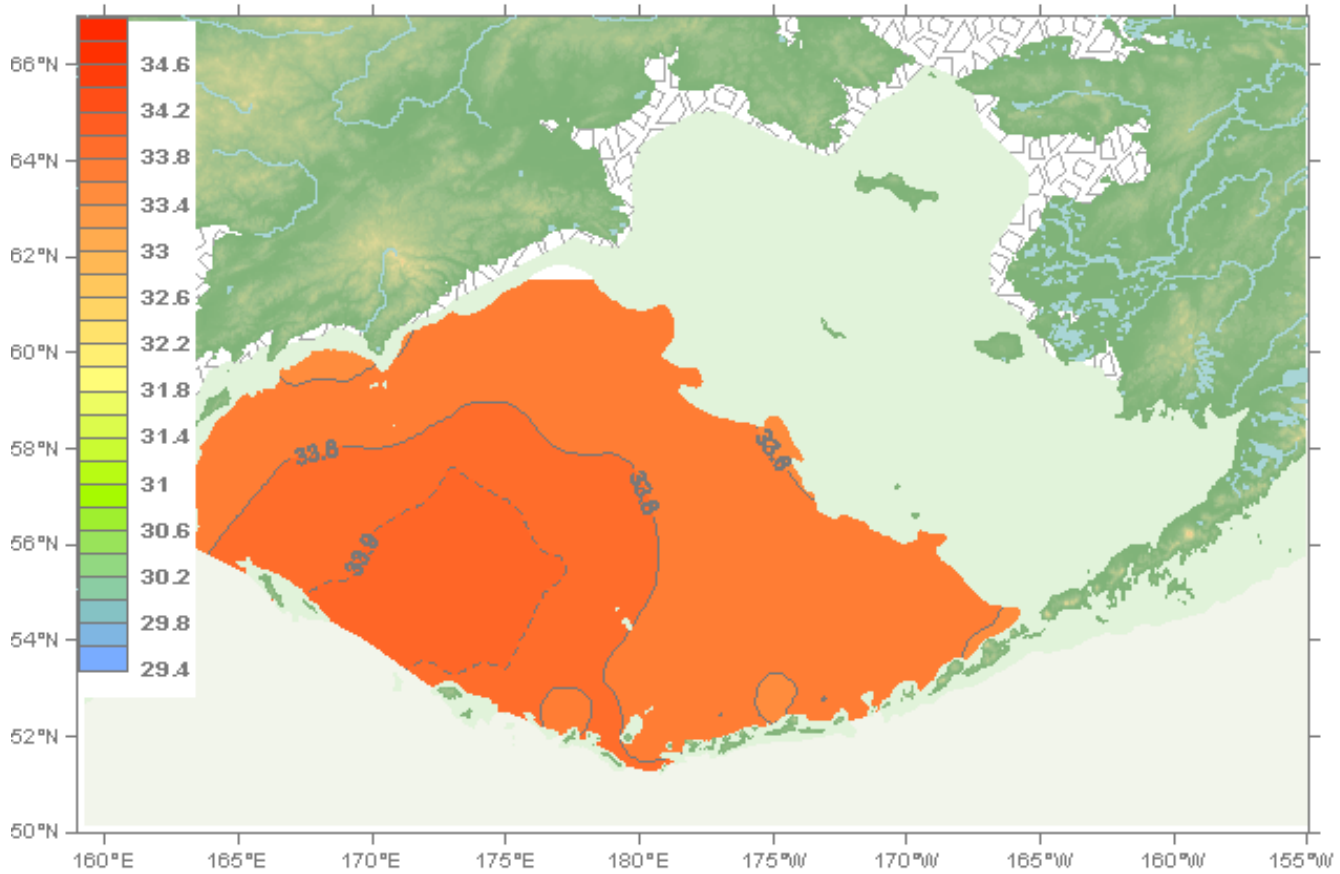
Bering Sea: Salinity Climatological Fields, Fall - 200 m.



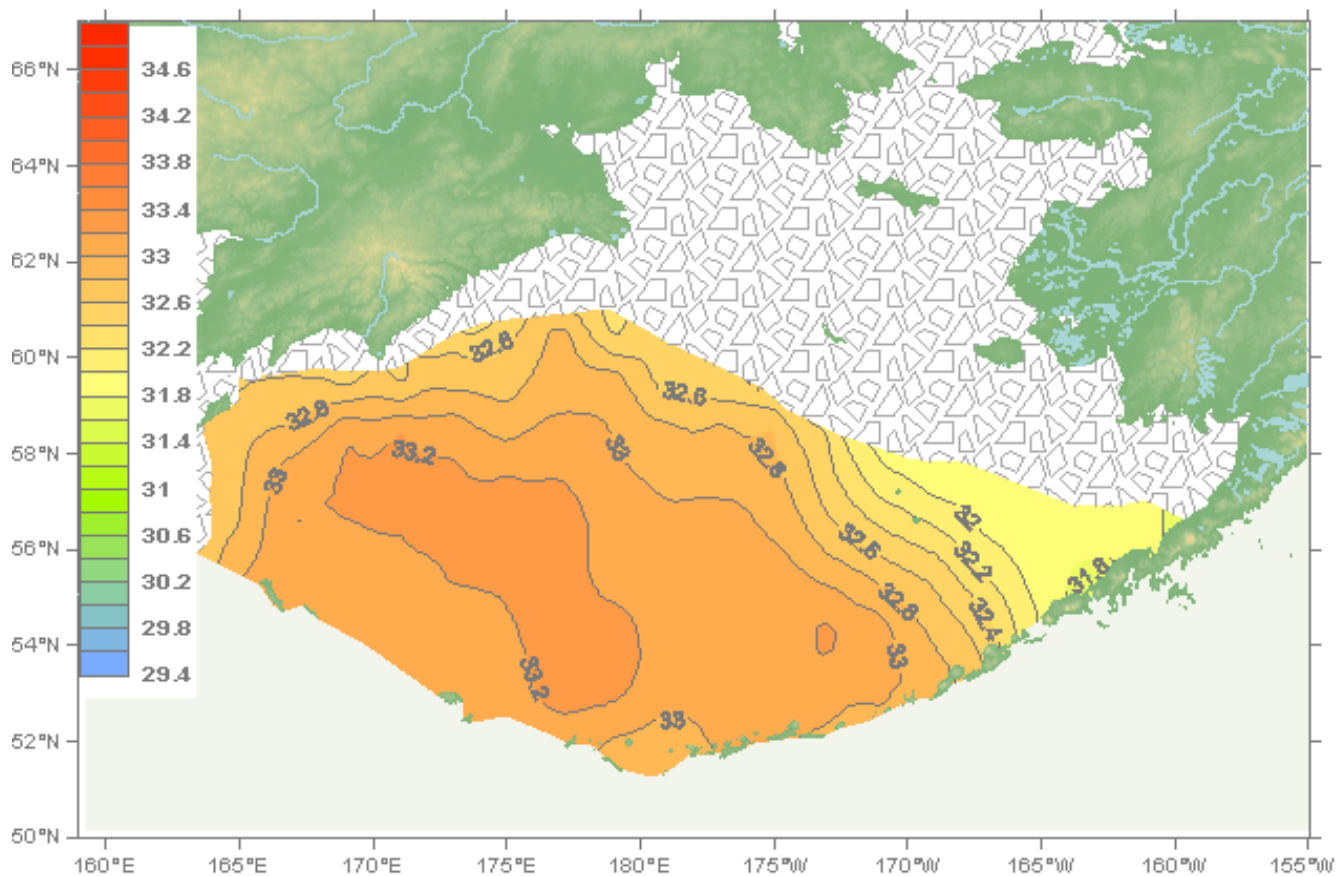
Bering Sea: Salinity Climatological Fields, Spring - 300 m.



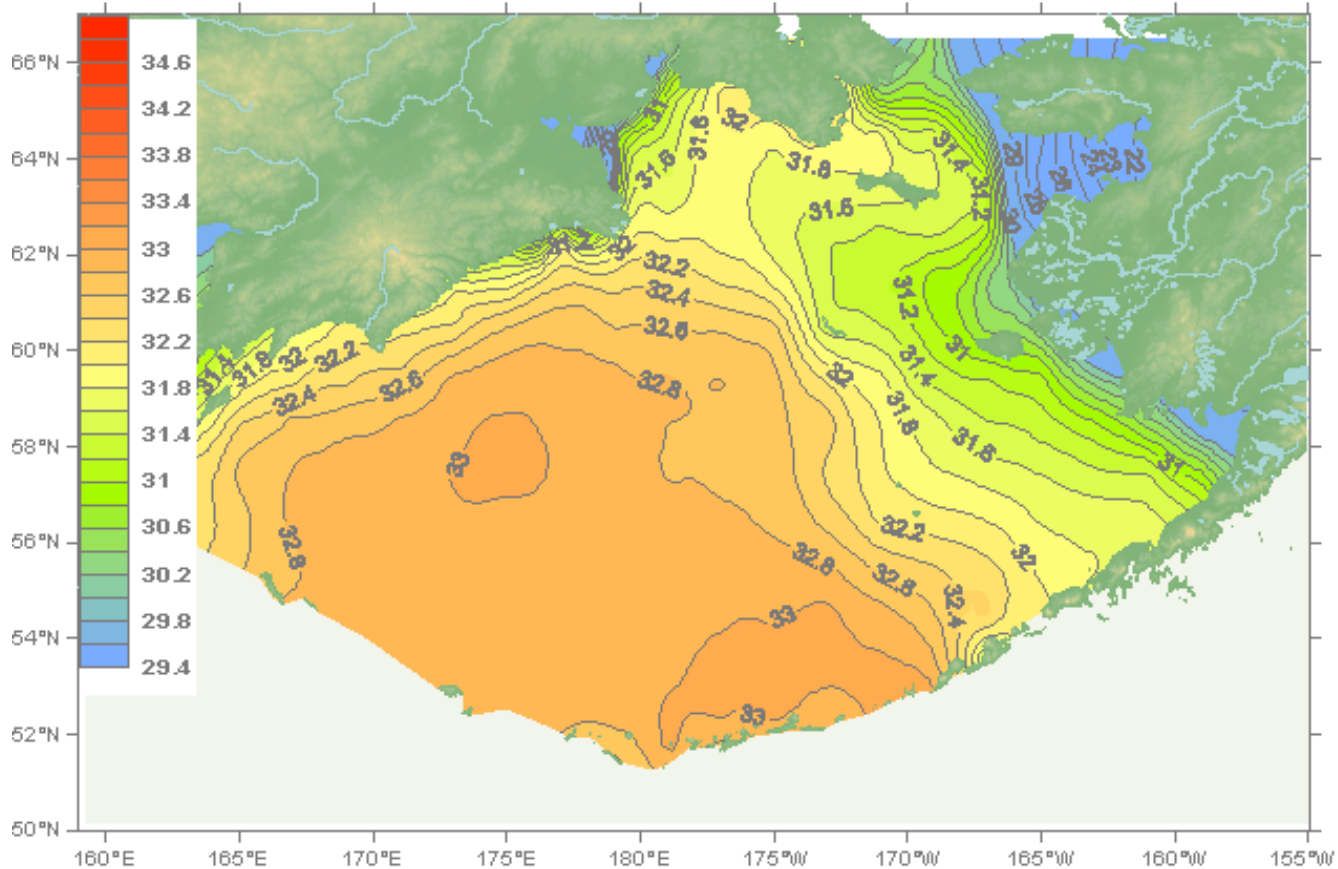
Bering Sea: Salinity Climatological Fields, Fall - 300 m.



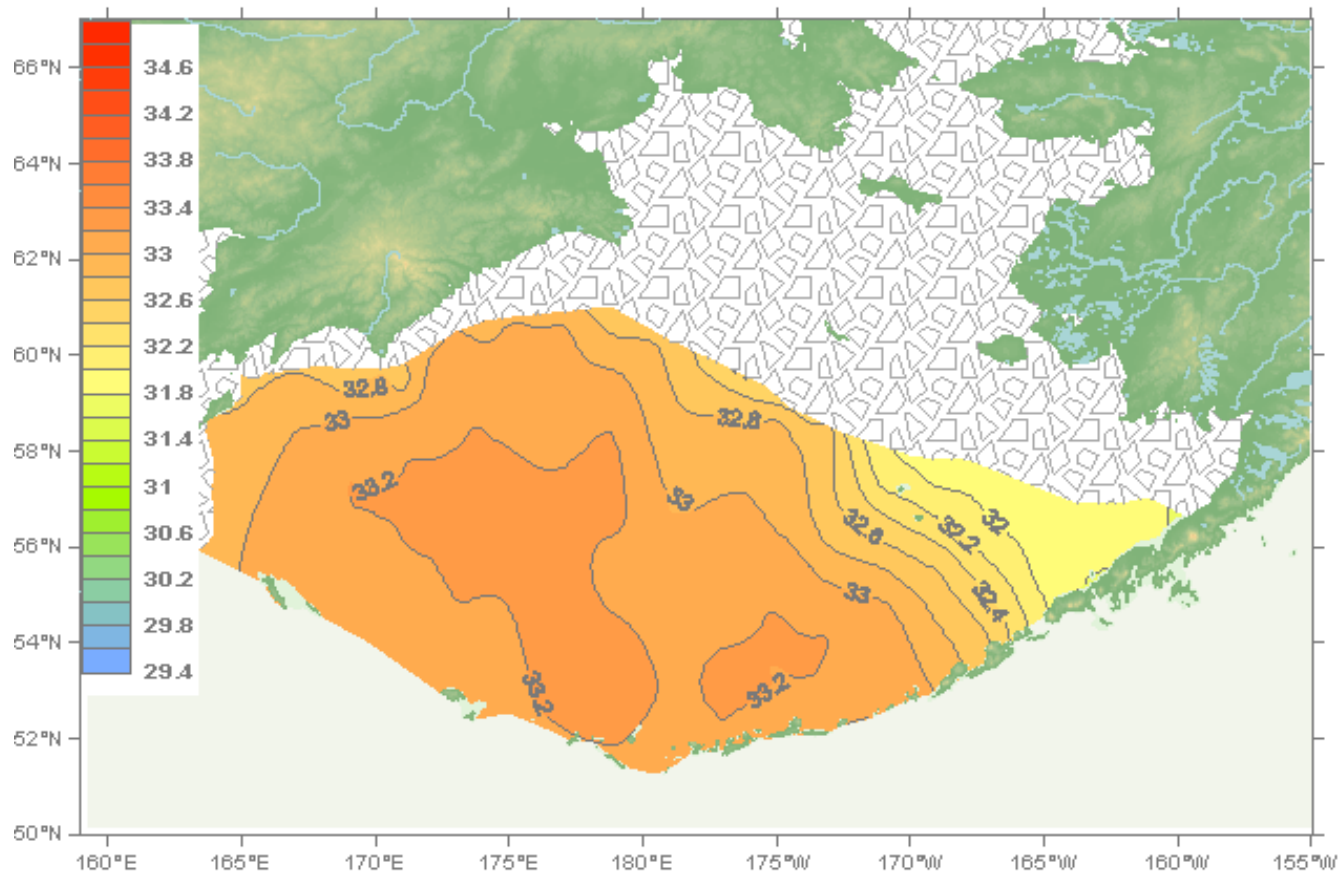
Bering Sea: Salinity Climatological Fields, April - 0 m.



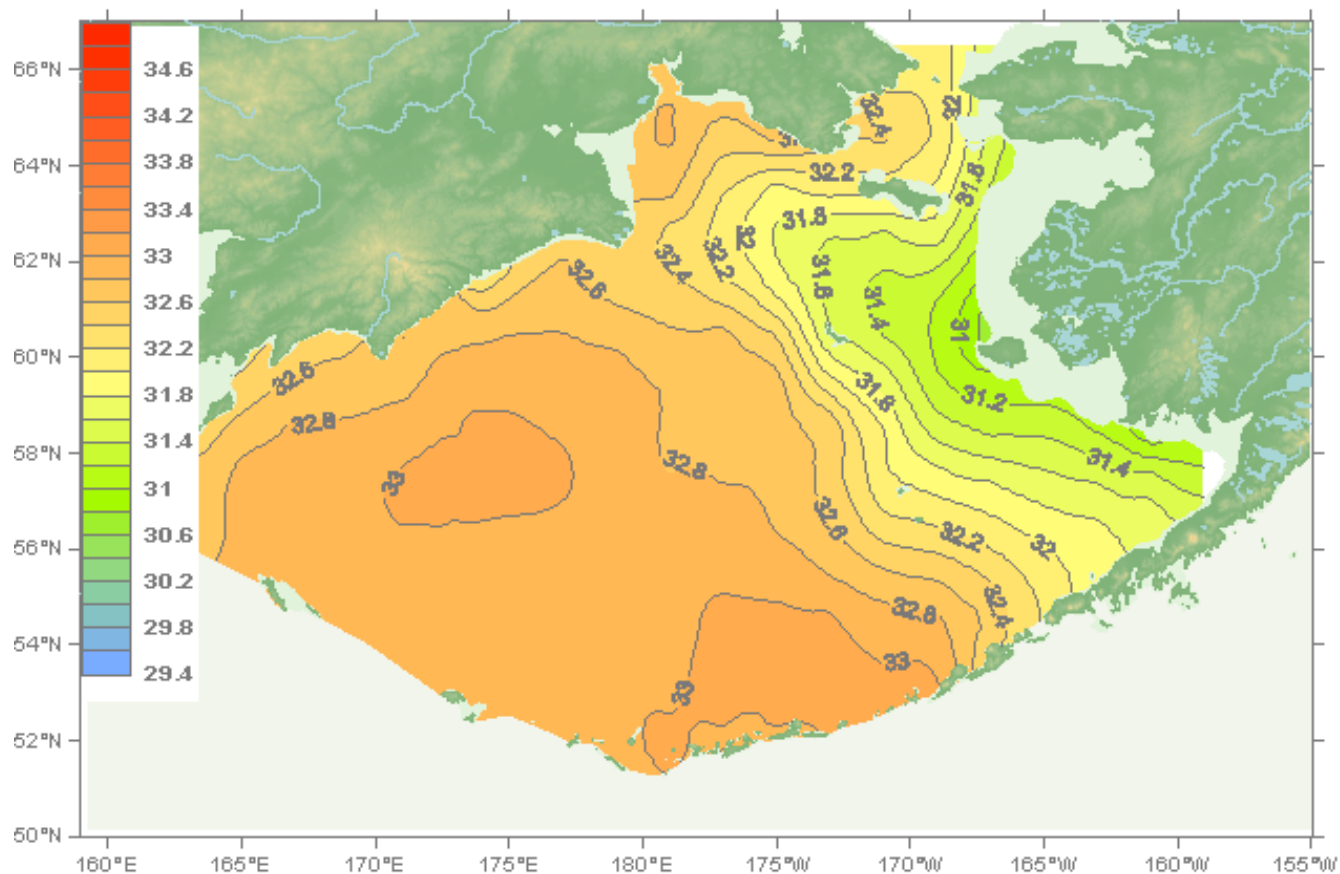
Bering Sea: Salinity Climatological Fields, September - 0 m.



Bering Sea: Salinity Climatological Fields, April - 25 m.

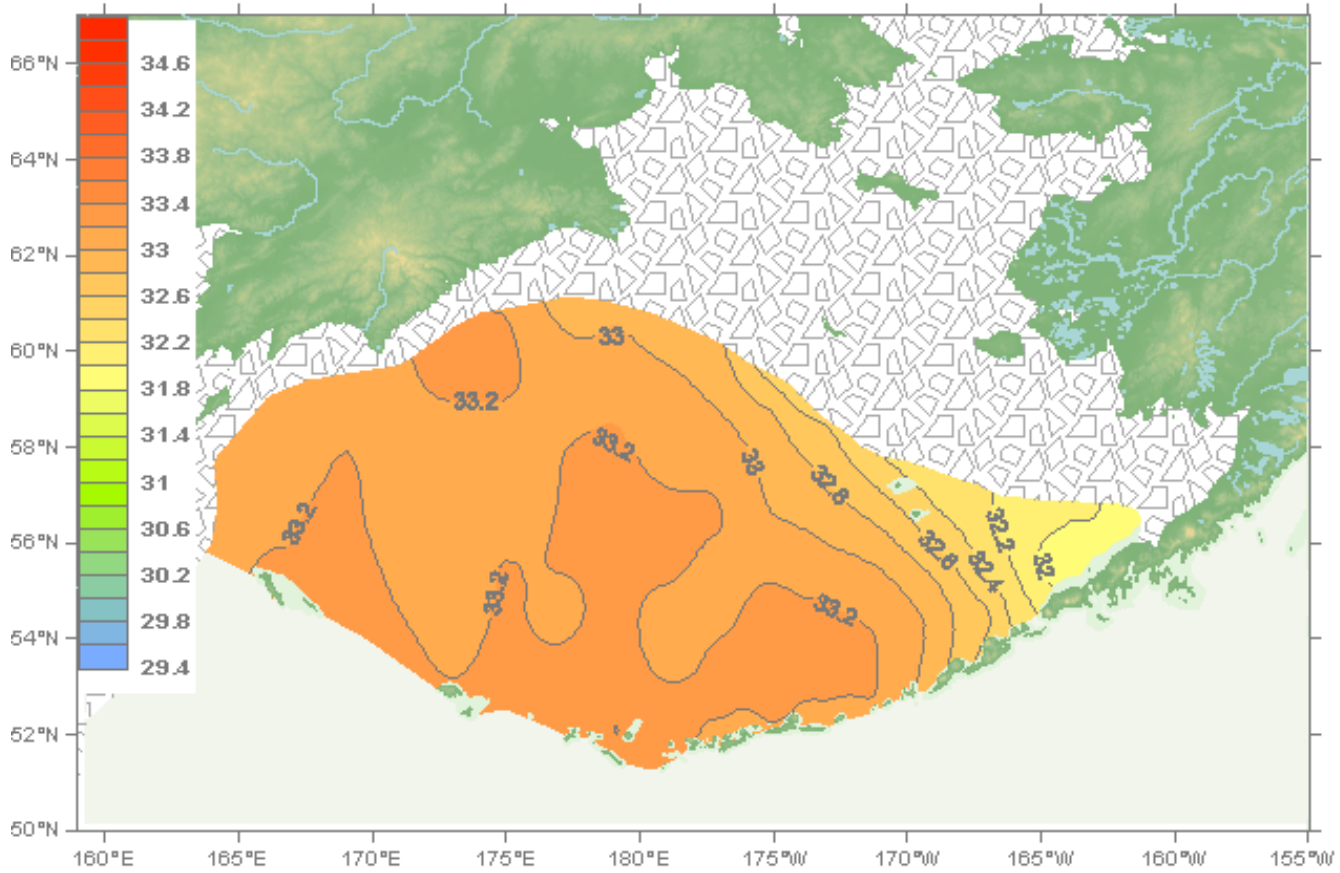


Bering Sea: Salinity Climatological Fields, September - 25 m.

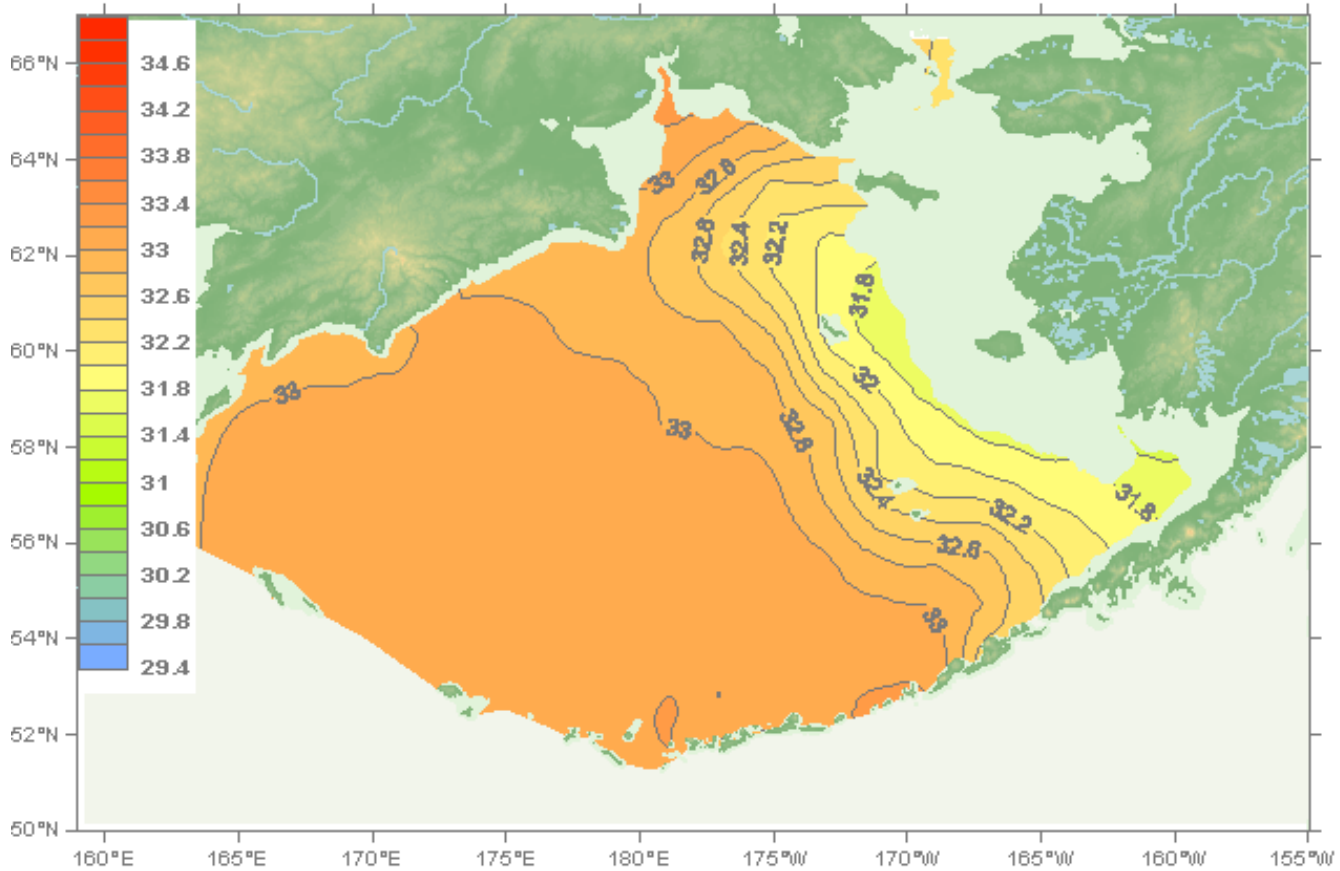


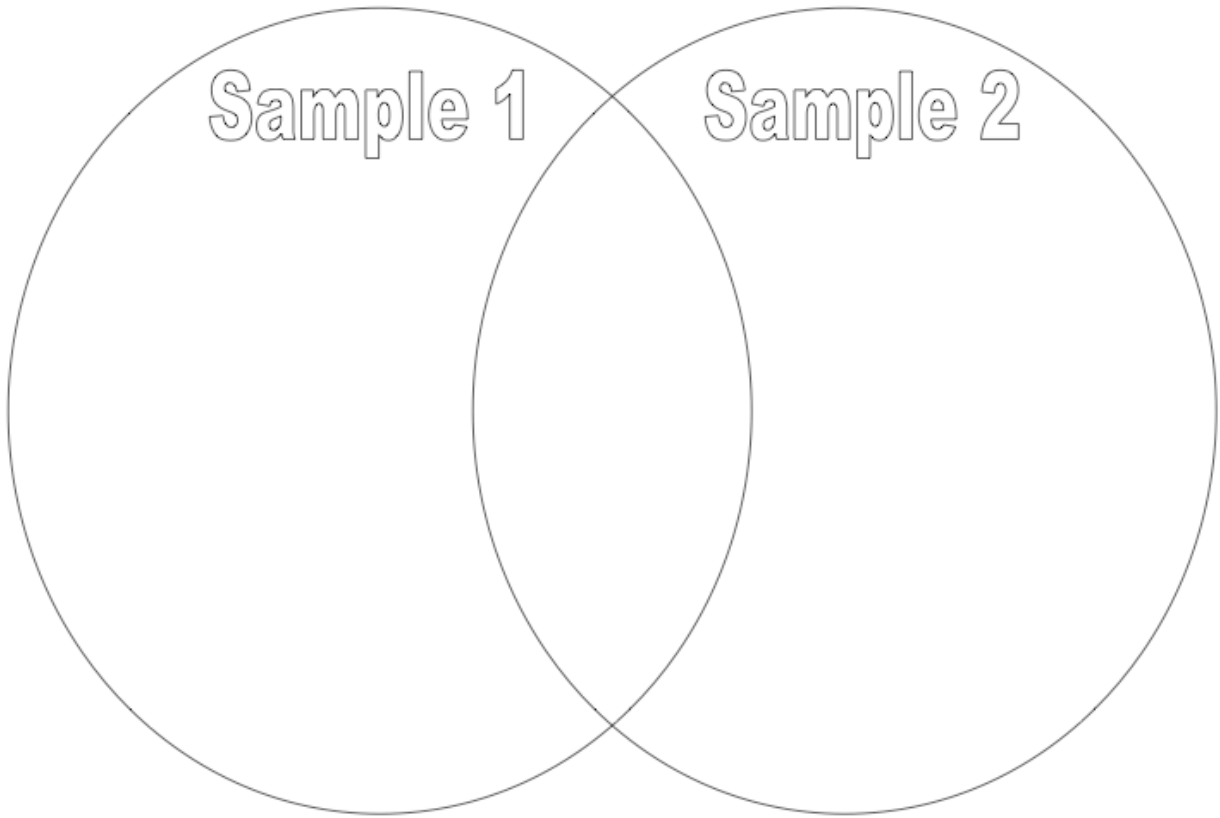


Bering Sea: Salinity Climatological Fields, March - 50 m.

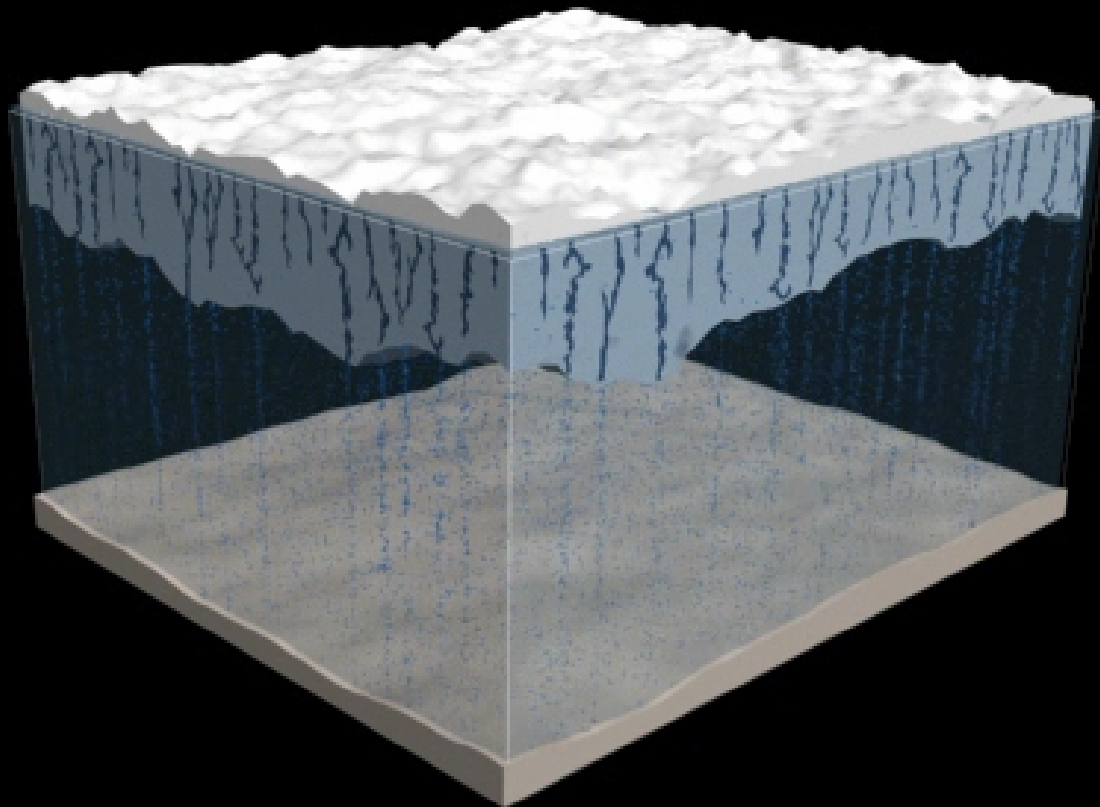


Bering Sea: Salinity Climatological Fields, September - 50 m.





## Brine Exclusion During Sea Ice Formation



©The COMET Program

