



PolarTREC and NASA's Operation IceBridge



Mark Buesing







✧ Tour Guide

Imagery Date: 5/27/2010 42°16'58.60" N 87°58'06.73" W elev 721 ft eye alt 1634 ft



NASA Operation IceBridge

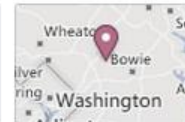
539 likes · 161 talking about this · 5 were here

✓ Liked Message

Government Organization
An airborne mission to study Earth's polar ice.



539



About - Suggest an Edit

Photos

Likes

Map


Events

Highlights

Post Photo / Video

Friends

Chat (Off)

 **NEWS** News, features & press releases | **MISSIONS** Current, future, past missions & launch dates | **MULTIMEDIA** Images, videos, NASA TV & more | **CONNECT** Social media channels & NASA apps | **ABOUT NASA** Leadership, organization, budget, careers & more

Search

NASA Home > Missions > Icebridge Send Share

- Missions**
- Missions Highlights
 - Current Missions
 - Current Missions
 - IceBridge**
 - Current Campaign
 - Past Campaigns
 - Mission Overview
 - Science
 - Team
 - News & Media Resources
 - Multimedia
 - Education
 - Aircraft & Instruments
 - Past Missions
 - Future Missions
 - Launch Schedule
 - Mission Calendar



Latest IceBridge Campaign News

05.01.13
Expanding IceBridge's Reach



Current IceBridge Campaign

Arctic 2013
March 18 - May 2

Latest Videos

Flying Low over Southeast Greenland



[View This Video](#)

IceBridge Science

Find IceBridge data and publications at our science website [Visit site](#)



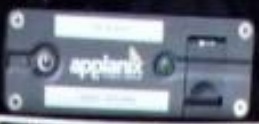












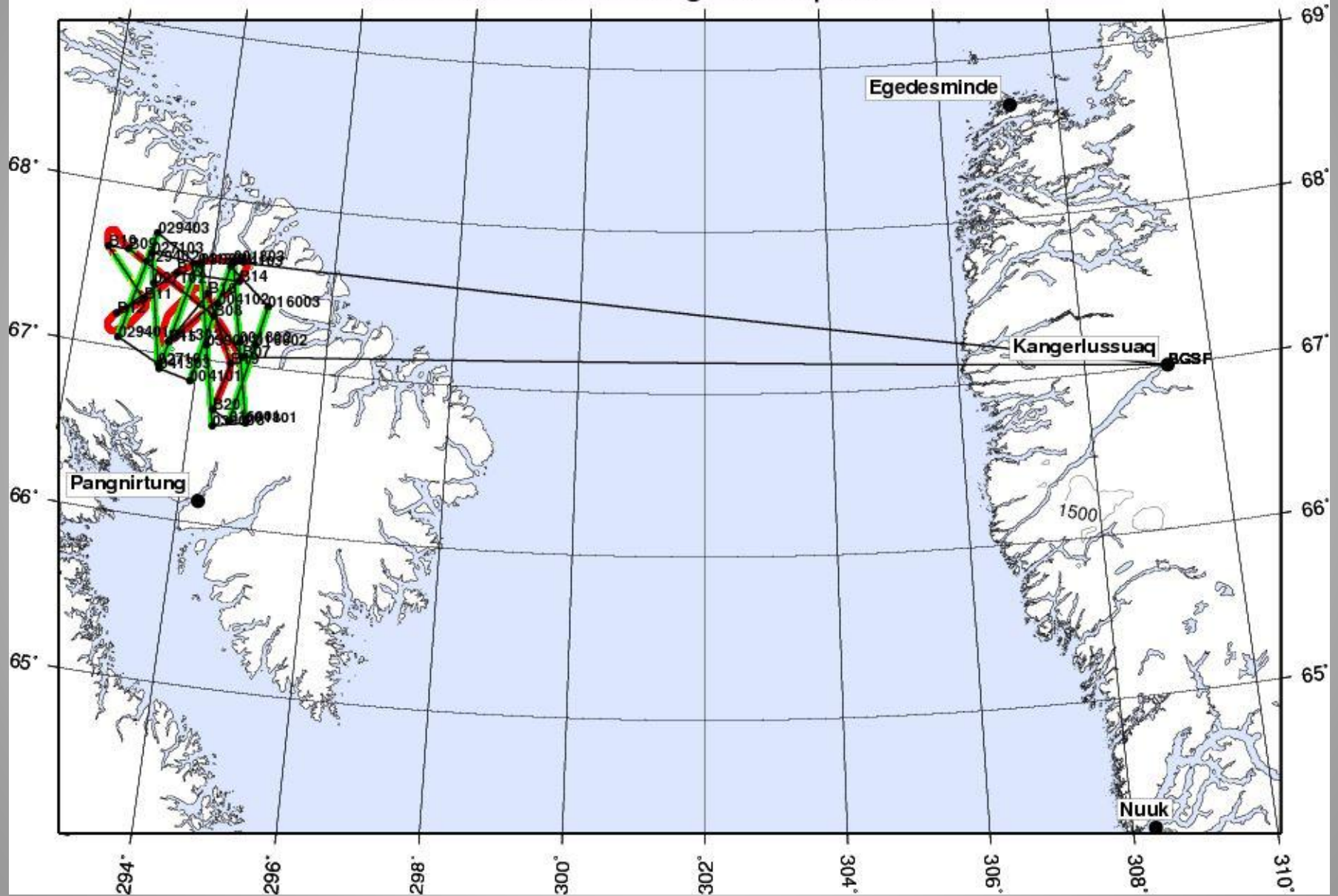
MORE DMS STUFF





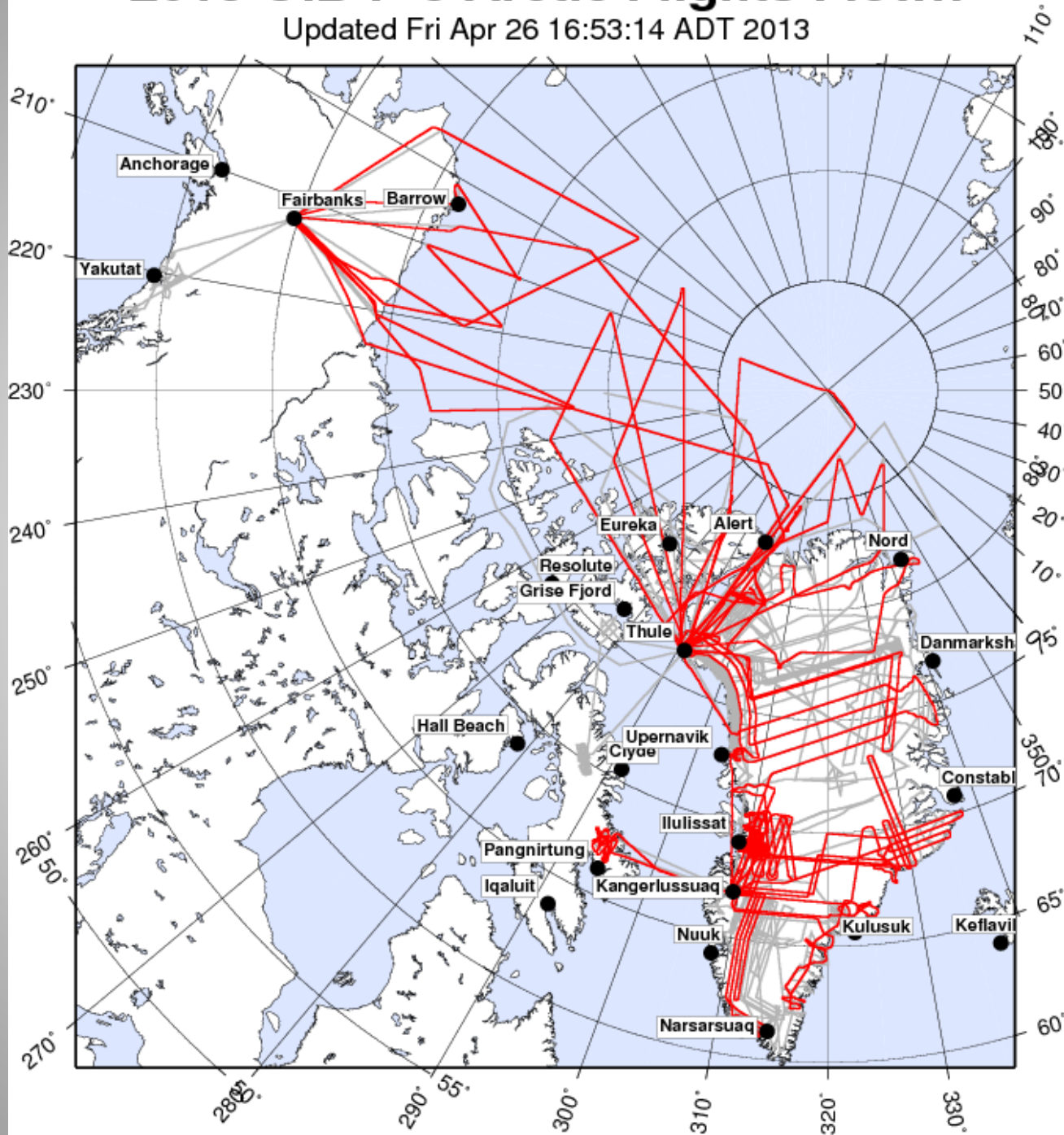
Baffin 02

6.2 hrs at 250 knots groundspeed



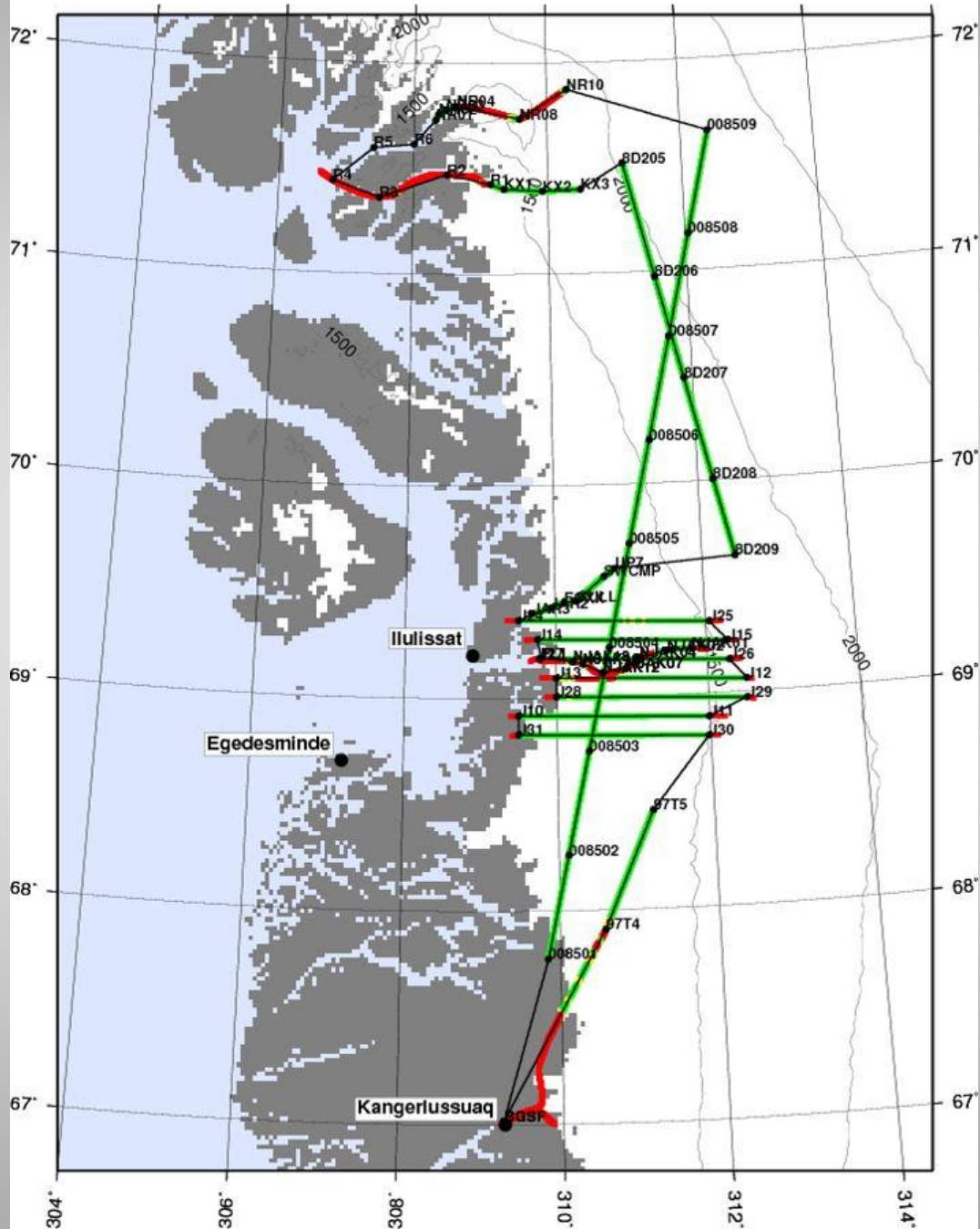
2013 OIB P-3 Arctic Flights Flown

Updated Fri Apr 26 16:53:14 ADT 2013



Jakobshavn 02

6.3 hrs at 250 knots groundspeed





Arve-prinsens Eiland

Ilulissat

Jakobshavn GI

Jakobsholm

© 2006 Europa Technologies
Image © 2006 TerraMetrics

Google

Pointer 69° 10'47.84"N 50° 09'00.65"W

Streaming 100%

Eye alt: 71.63 mi

NASA ATM

Airborne LIDAR for Icemapping

*Fenris glacier
southeast Greenland*

Lat 66.6

Lon -37.3



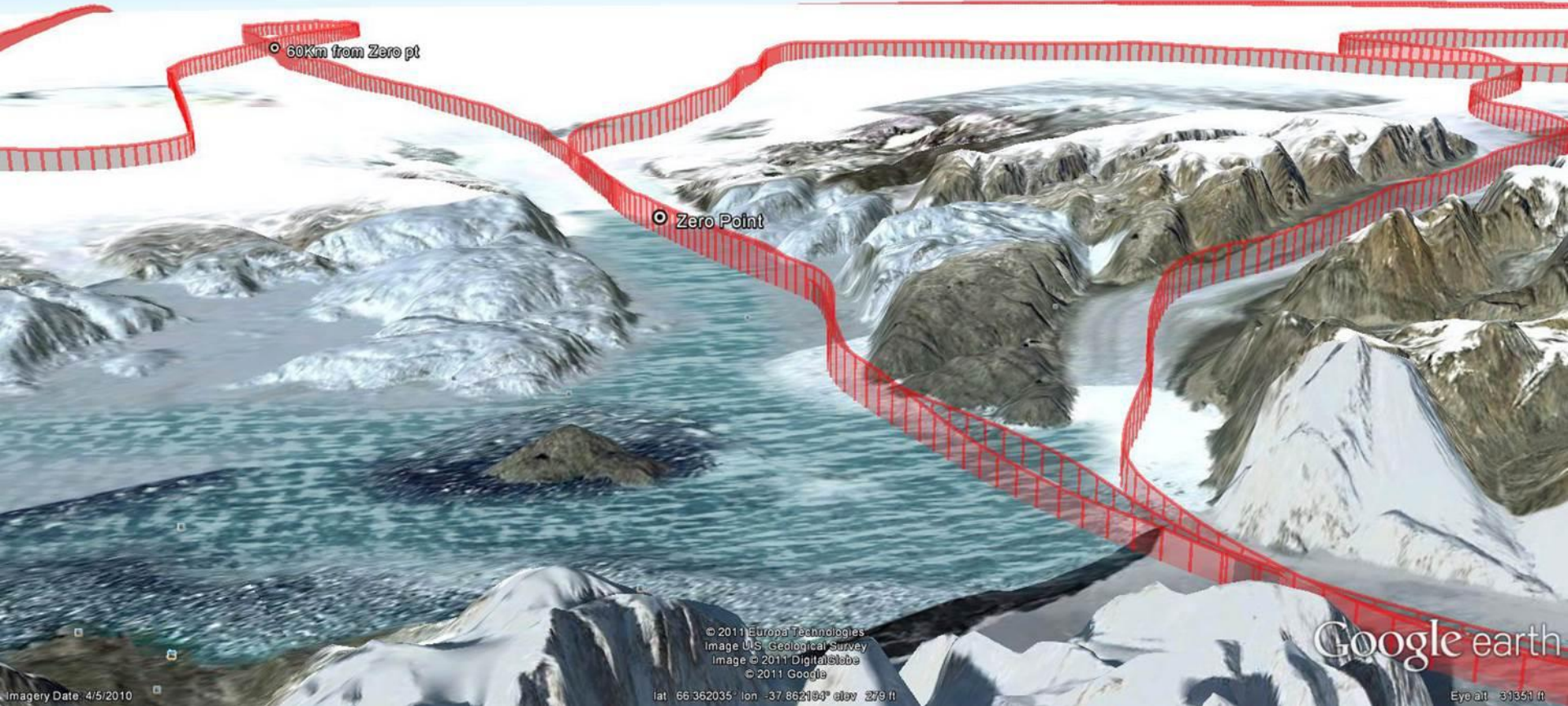
CURRENT SCAN SWATH

PREVIOUS YEAR'S SCAN SWATH





ATM flightline 04-19-2011 Helheim Glacier



© 2011 Europa Technologies
Image U.S. Geological Survey
Image © 2011 DigitalGlobe
© 2011 Google

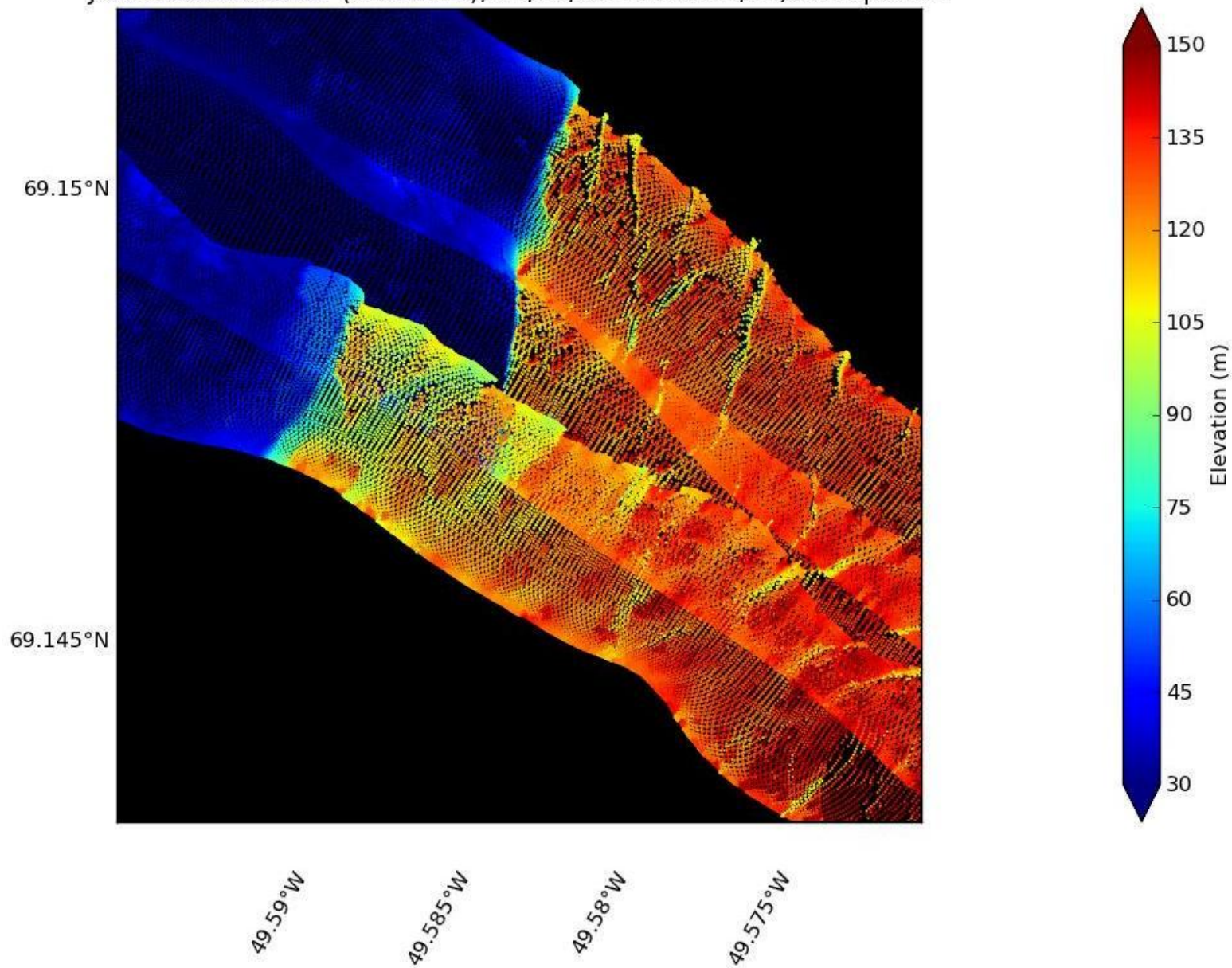
Google earth

Imagery Date: 4/5/2010

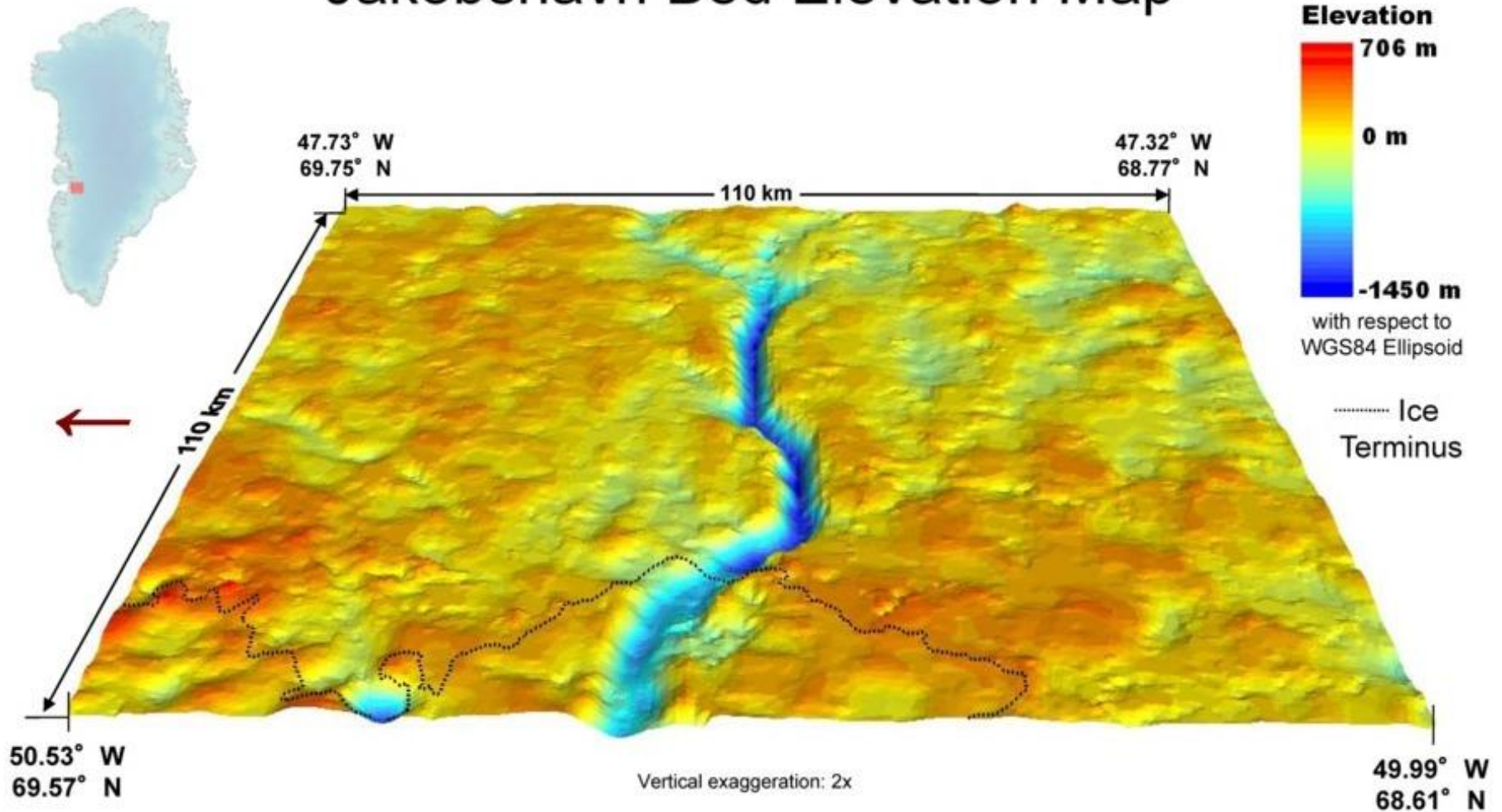
lat 66.362035° lon -37.862194° elev 279 ft

Eye alt 31351 ft

Jakobshavn Glacier (ATM4BT4), 04/10/2013 and 04/04/2013 passes



Jakobshavn Bed Elevation Map

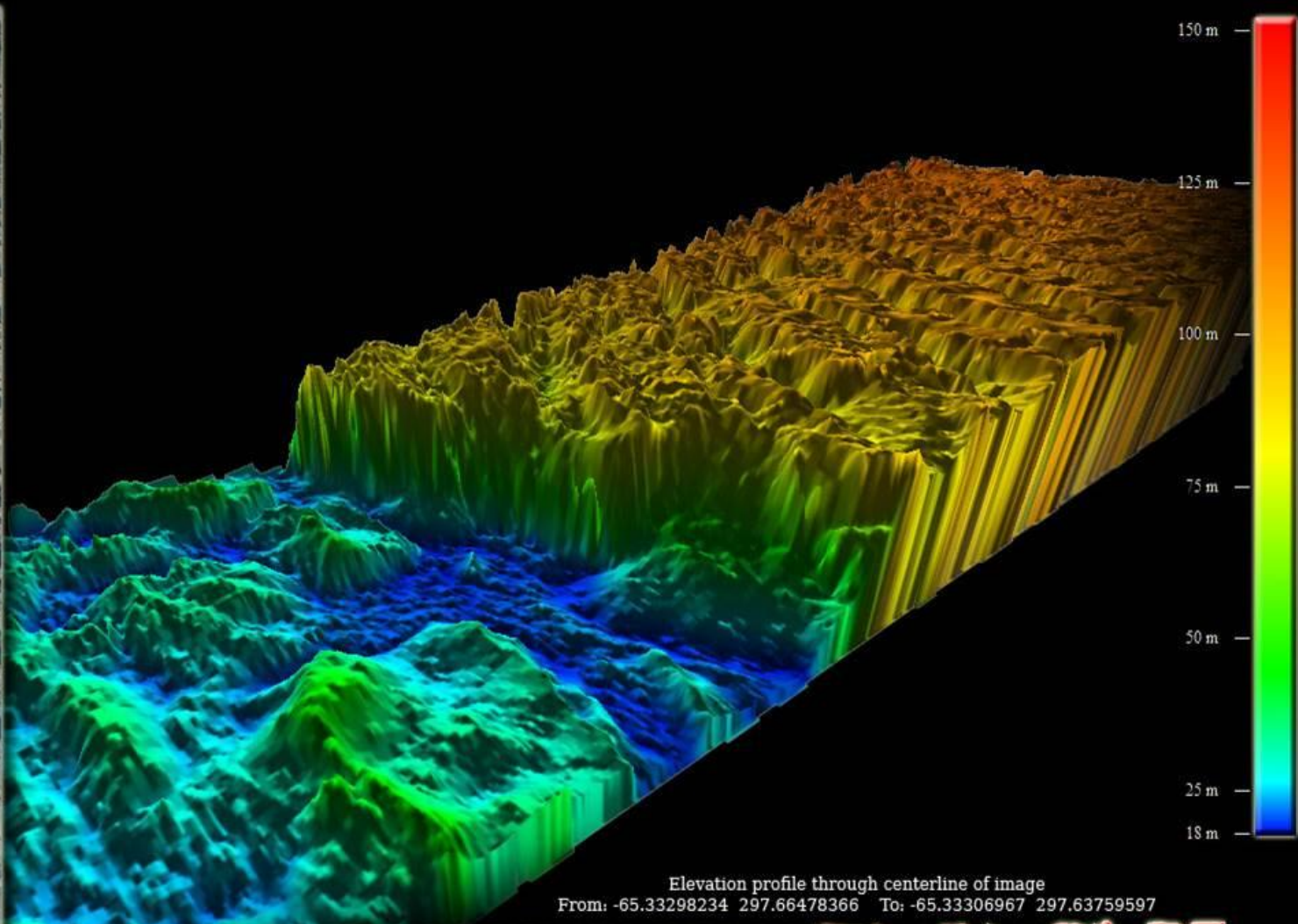


Data Sources:

Ice thickness: KU Polar Radar, 1997-1999, 2001-2003, 2005-2009
Ice surface elevation: W. Krabill, NASA
Bare rock elevation: B. Csatho, U. Buffalo, 2006 ASTER DEM
Open fjord depth: D. Holland, NYU

Crane Glacier, Antarctica, 10-31-2009

Image data From NASA ATM T3 LIDAR
Operation Ice Bridge - NASA DC8 - N817NA - Fall 2009



Elevation profile through centerline of image
From: -65.33298234 297.66478366 To: -65.33306967 297.63759597



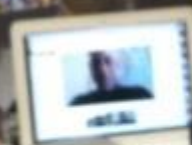


Why are science,
technology,
engineering, and
math vital
to *all* students.





Who's
Grade





Hello from Greenland!



Invite people

Chat
Mark, Becky

Screenshare

Capture

Google Effects

The Ping-Pong H...

Scoot & Doodle

View more apps

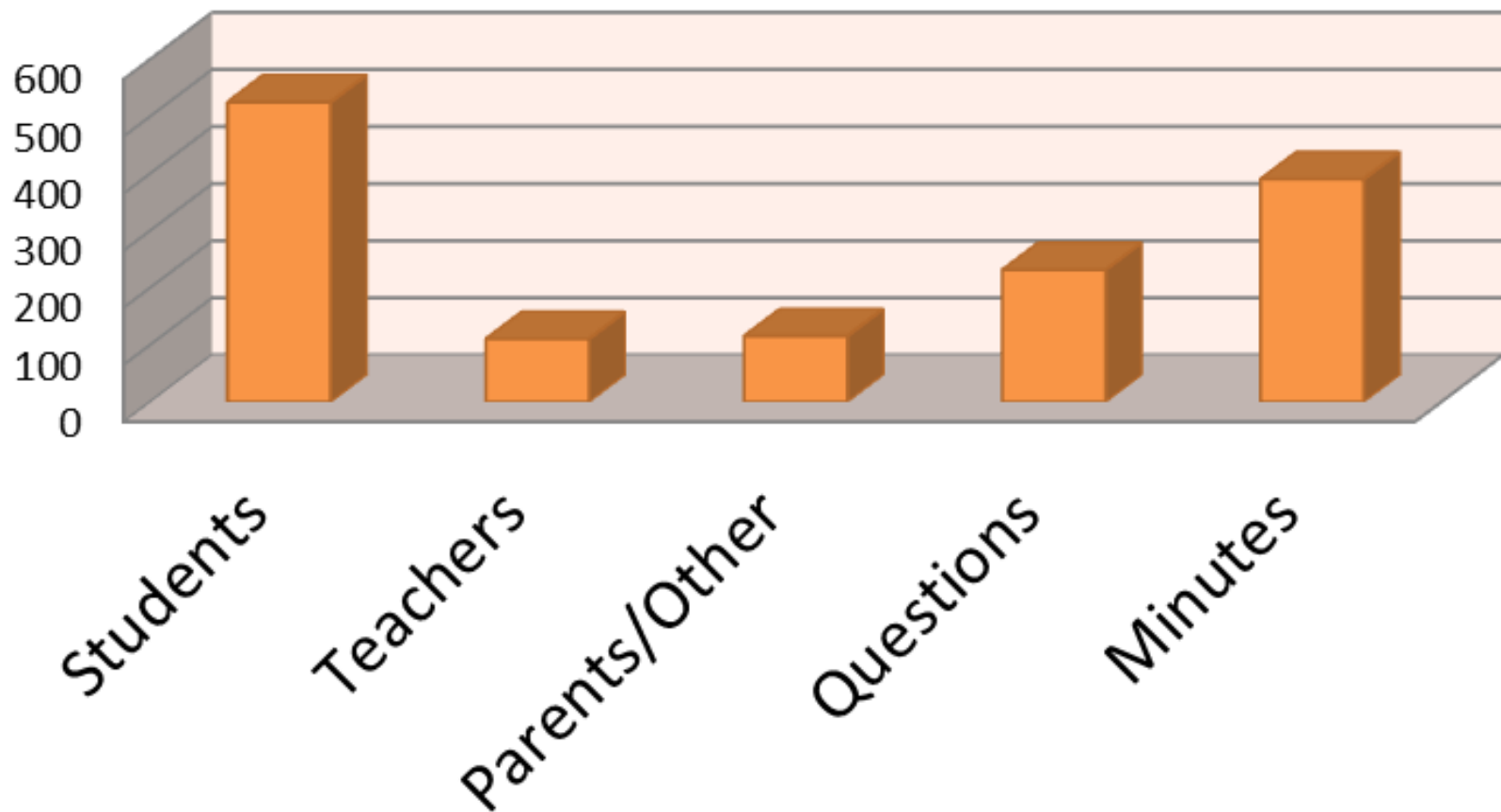
Help



Report an issue



Outreach



Mark Buesing

About

Expeditions: Airborne Survey of Polar Ice 2013

Occupation: Teacher

Organization: Libertyville High School



Mark Buesing confesses that he is not a teacher. At least that's not what he started out as. Mr. Buesing graduated with honors in Electrical Engineering from the University of Illinois - Urbana. He worked at both Hughes Aircraft in the Missile Development Division and Motorola in the Cellular Subscriber Division.

In college Mr. Buesing started bicycle racing. As he began receiving wider recognition as a bicycle racer, he accepted an offer to race full time and left Motorola on good terms. While racing, he was selected to train at the Olympic Training Center, was twice the Illinois Rider of the Year, and rode in the 1992 Olympic Trials.

During an off-season from cycling, a physics teacher at a local high school quit. A friend called and asked Mr. Buesing if he could fill in until the school could find a "real" teacher. Mr. Buesing loved engineering, but after a few days in the classroom, felt a calling to be a teacher; he had accidentally discovered what he was meant to do. After retiring from cycling Mr. Buesing completed a Master's in Education and embarked on a teaching career.

"Mr. Mark," as his students call him, teaches Physics and AP Physics at Libertyville High School. He is the head cross country coach and coaches the school's academic decathlon team. He lives in Bristol, WI with his wife, two children, and a dog.

Mark Buesing's Content

Journals

Resources

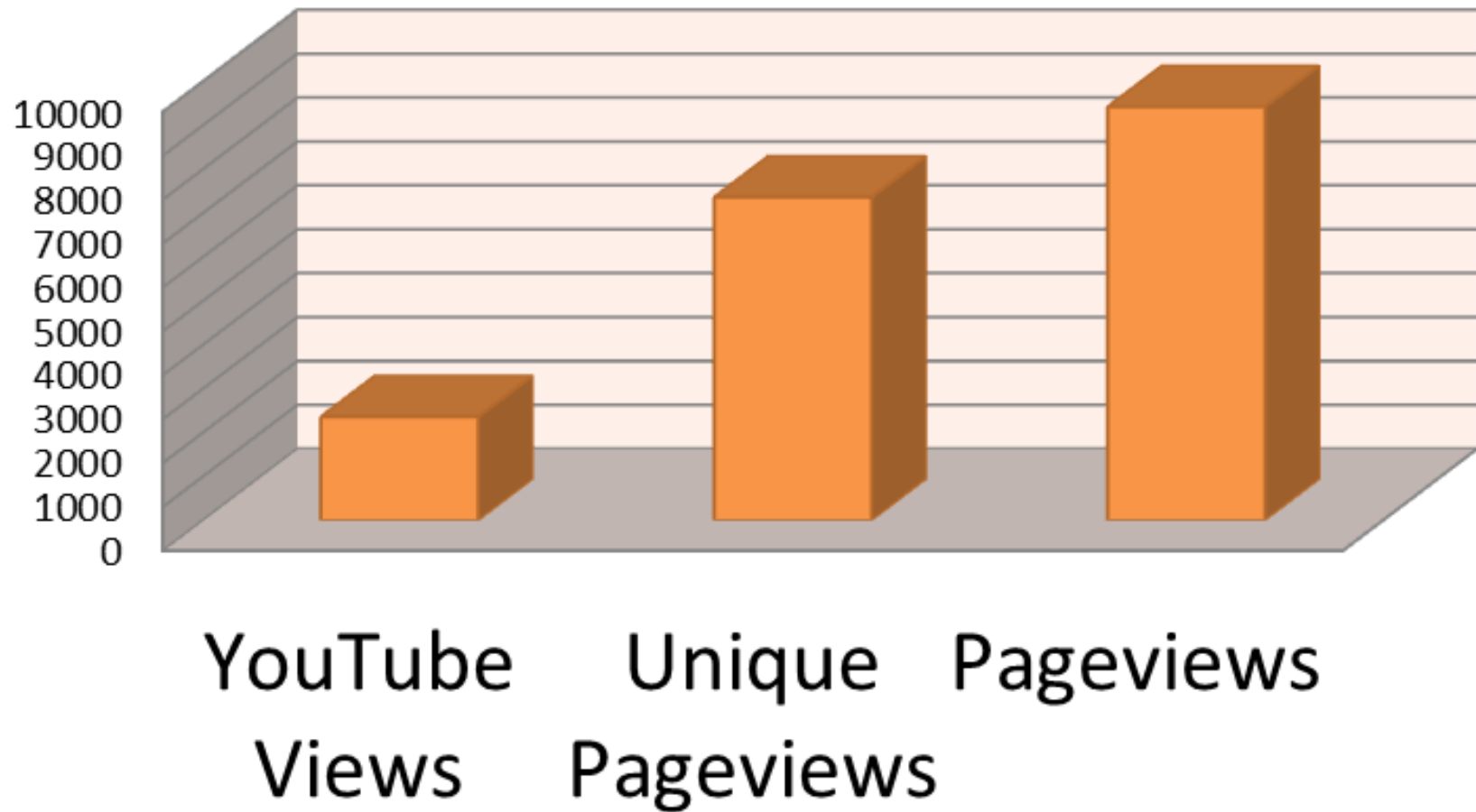
Forum Posts

Forum Replies

Title		Posted
April 21, 2013 PolarTREC and NASA's Operation IceBridge By The Numbers	Read Full Journal	21 April 2013
April 20, 2013 Home Sweet Home	Read Full Journal	20 April 2013
April 19, 2013 Project Scientist Michael Studinger	Read Full Journal	19 April 2013



Analytics

















2013-04-09 13:35:05

