

# Welcome to *PolarConnect*



## Shrubs Snow and Nitrogen in the Arctic 2019

With PolarTREC Teacher Kate Steeper

& Team Researchers Dr. Syndonia Bret-Harte and Emily Reast

**August 15<sup>th</sup>, 2019**

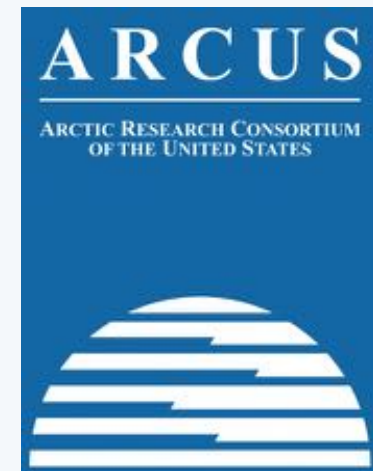
# Participant Introductions

**In the Chat box, please introduce yourself  
by typing in your:**

- ✓ Name
- ✓ School or Institution
- ✓ The number of students and adults participating with you in the same location

# What is PolarTREC?

- Since 2004, the Arctic Research Consortium of the United States (ARCUS), a non-profit organization, has been administering the PolarTREC Program.
- PolarTREC is professional development for U.S. middle and high school teachers and informal STEM educators. They are paired with researchers for 3-6 week research experiences in the polar regions.
- Over 150 educators from around the United States have joined scientists in the Arctic and Antarctica to learn about science, the polar regions, and to share what they have learned with their students and communities.



*25 Years of Connecting Arctic Research*

*[www.arcus.org](http://www.arcus.org)*

# Questions

## During the Presentation:

- Type your question into the text chat box and we will insert your question when the right opportunity arises.
- Don't worry! If we haven't been able to ask your question during the presentation, we will save it for the end.
- At the end of the presentation, we often open the webinar up to family and friends who want to say "Hello" or have any last minute questions for the presenters.



# Kate Steeper



# Dr. Bret-Harte





# Emily Reast

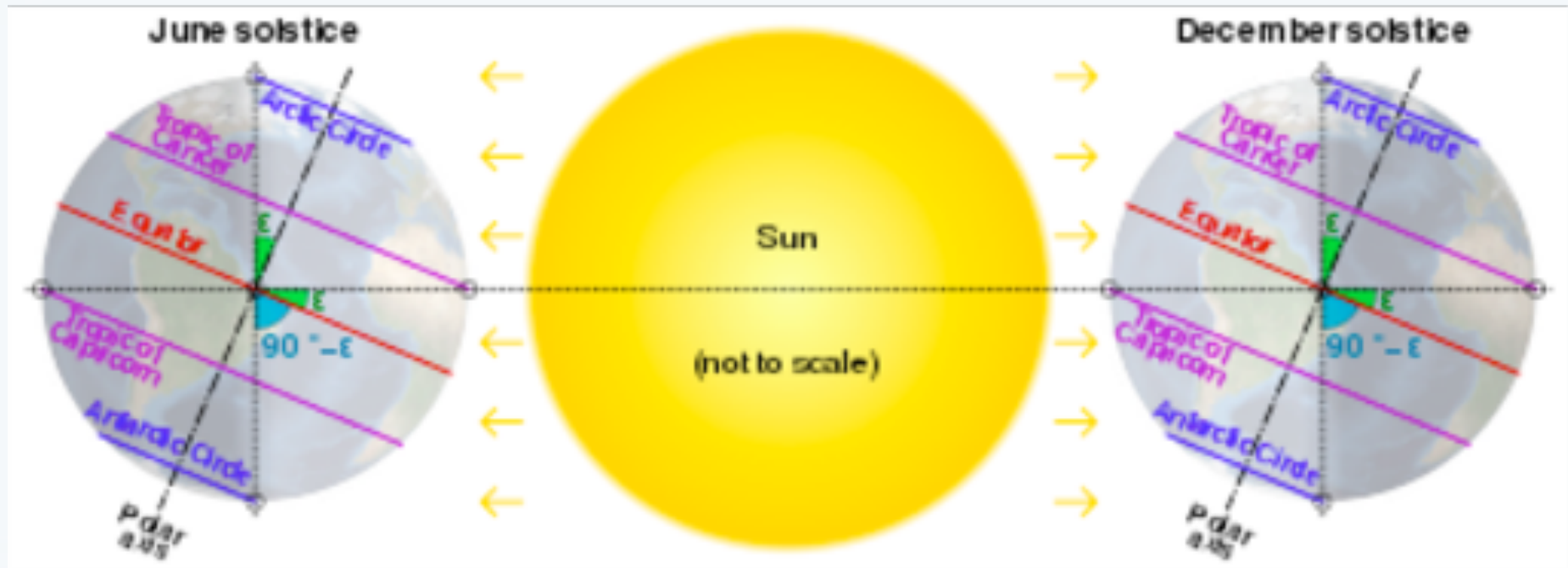


# Where is Toolik?

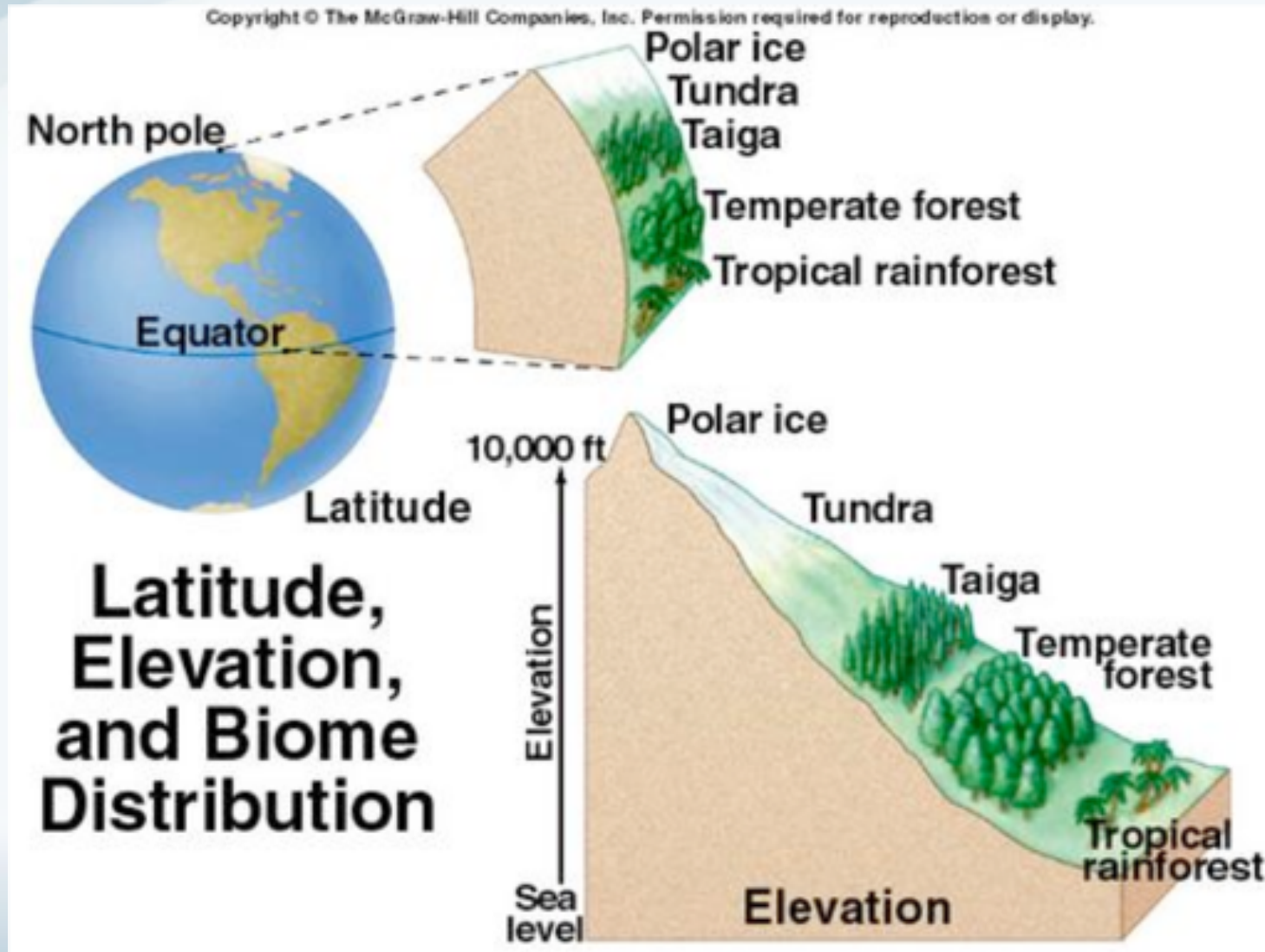




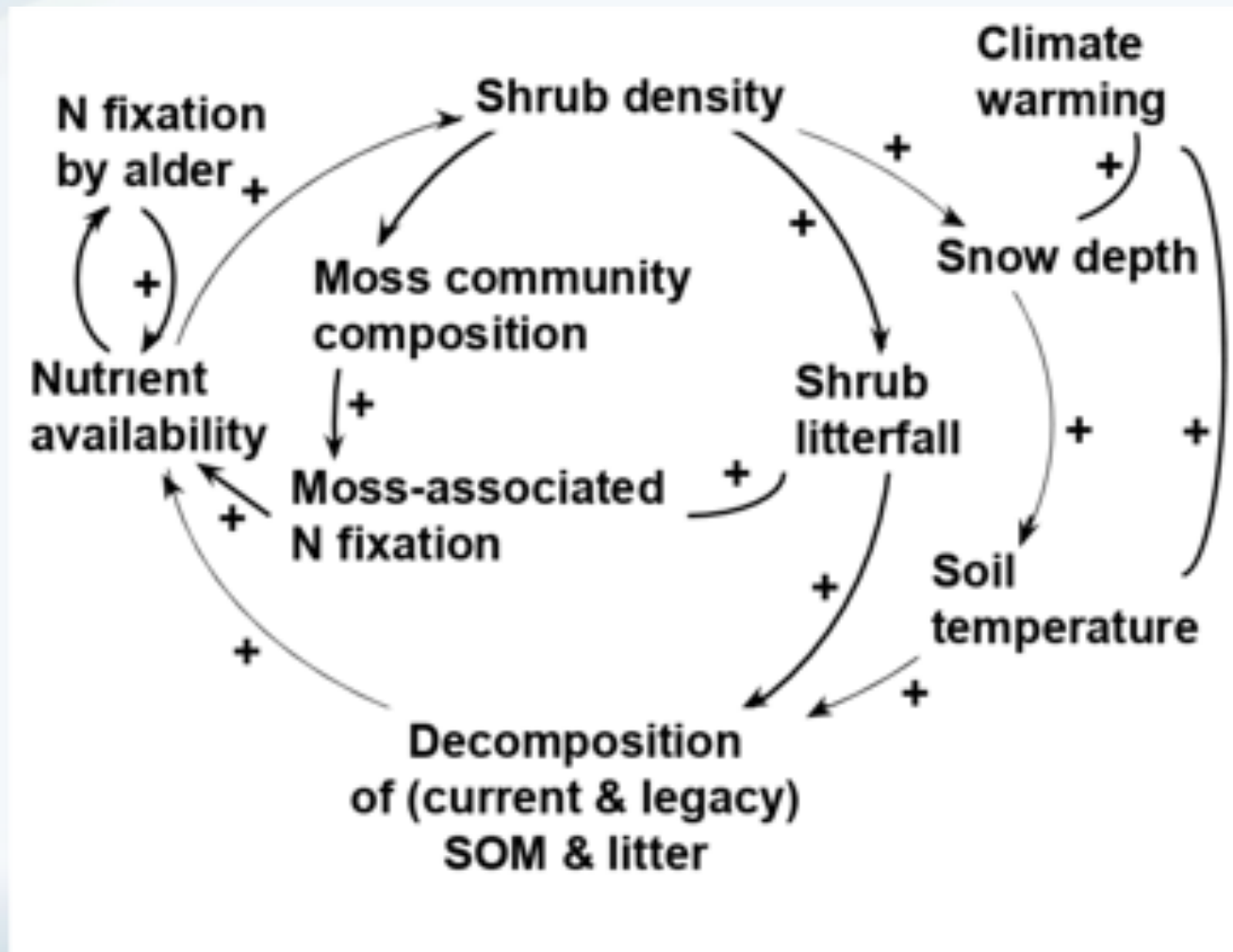
# Why study here?



# What is the tundra?

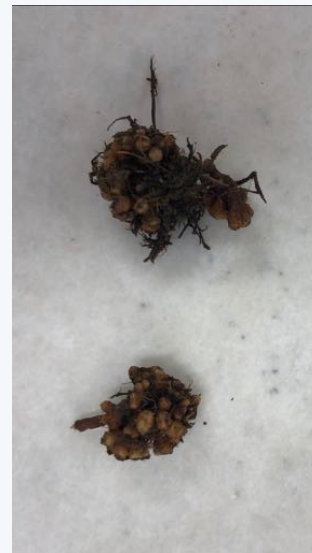


# The Project





# Sagwon



# Harvesting





# The Pluck





# The Pluck





# Stem Measurement





# Mammals of the North Slope





# Flora of the North Slope







TEACHERS AND RESEARCHERS  
EXPLORING AND COLLABORATING

# Atigun Gorge





# Atigun Gorge



# Atigun Gorge





# Atigun Gorge

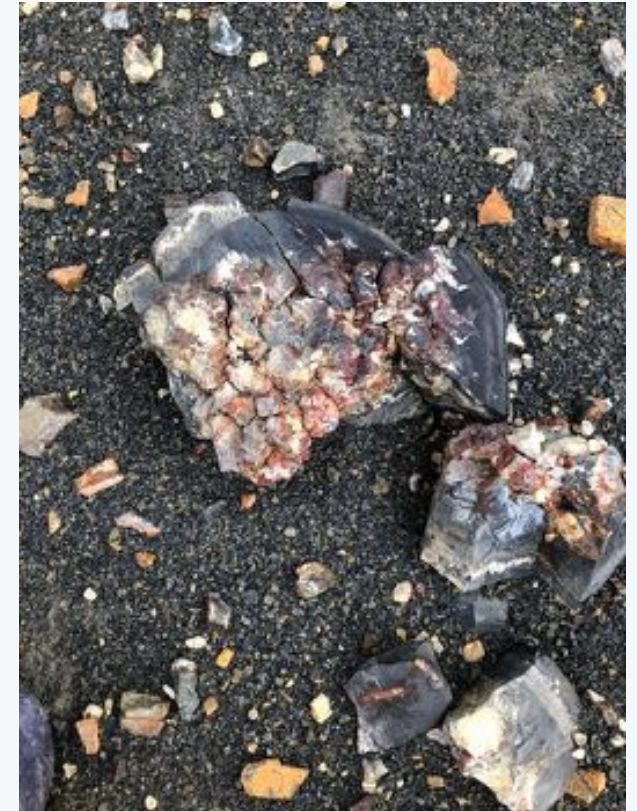


# Atigun Gorge





# Atigun Gorge Geodes





# Atigun Gorge Fossils







TEACHERS AND RESEARCHERS  
EXPLORING AND COLLABORATING

# Join PolarTREC!

[www.polartrac.com/about/join](http://www.polartrac.com/about/join)

Everyone can participate in different ways:

- **Follow Expeditions**
- **Participate in PolarConnect Events**
- **Join the Polar Education Email List**
- **Check out the great resources**
- **Become a PolarTREC Teacher or Researcher**
- **Become a member of ARCUS**

# Thank You!

*An archive of the event will be available shortly.*  
<http://www.polar-trec.com/polar-connect/archive>



*25 Years of Connecting Arctic Research*  
[www.arcus.org](http://www.arcus.org)